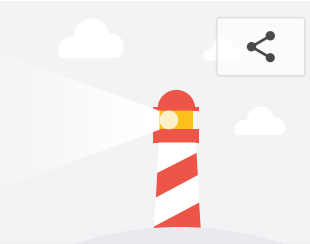


https://www.21-points.com/#/

Oct 15, 2018, 8:42 AM MDT

Emulated Nexus 5X, Simulated Fast 3G network



Performance



Progressive Web App



Accessibility



Best Practices



SEO

Score scale: 0-49 50-89 90-100

## Performance



### Metrics

First Contentful Paint	4.7 s	First Meaningful Paint	4.7 s
Speed Index	7.6 s	First CPU Idle	5.0 s
Time to Interactive	5.4 s	Estimated Input Latency	30 ms

Values are estimated and may vary.



### Opportunities

These optimizations can speed up your page load.

Opportunity	Estimated Savings
1 Eliminate render-blocking resources	0.62 s

### Diagnostics

More information about the performance of your application.

1 Minimize Critical Requests Depth	7 chains found
2 User Timing marks and measures	26 user timings

### Passed audits

19 audits

## Progressive Web App

These checks validate the aspects of a Progressive Web App, as specified by the baseline [PWA Checklist](#).



### Additional items to manually check

3 audits

✓ Passed audits

12 audits ▾

## Accessibility

These checks highlight opportunities to [improve the accessibility of your web app](#). Only a subset of accessibility issues can be automatically detected so manual testing is also encouraged.



### Color Contrast Is Satisfactory

These are opportunities to improve the legibility of your content.

- 1 Background and foreground colors do not have a sufficient contrast ratio. ▲ ▾

### Elements Are Well Structured

These are opportunities to make sure your HTML is appropriately structured.

- 1 [id] attributes on the page are not unique ▲ ▾

### Meta Tags Used Properly

These are opportunities to improve the user experience of your site.

- 1 [user-scalable="no"] is used in the <meta name="viewport"> element or the [maximum-scale] attribute is less than 5. ▲ ▾

🔍 Additional items to manually check

11 audits ▾

✓ Passed audits

12 audits ▾

⊖ Not applicable

20 audits ▾

## Best Practices



- 1 Does not use HTTP/2 for all of its resources 15 requests not served via HTTP/2 ▲ ▾

- 2 Does not use passive listeners to improve scrolling performance ▲ ▾

- 3 Links to cross-origin destinations are unsafe ▲ ▾

✓ Passed audits

13 audits ▾

## SEO

These checks ensure that your page is optimized for search engine results ranking. There are additional factors Lighthouse does not check that may affect your search ranking. [Learn more](#).



🔍 Additional items to manually check

2 audits ▾

✓ Passed audits

10 audits ▾

⊖ Not applicable

1 audits ▾

Runtime settings

- **URL:** <https://www.21-points.com/#/>
- **Fetch time:** Oct 15, 2018, 8:42 AM MDT
- **Device:** Emulated Nexus 5X
- **Network throttling:** 150 ms TCP RTT, 1,638.4 Kbps throughput (Simulated)
- **CPU throttling:** 4x slowdown (Simulated)
- **User agent (host):** Mozilla/5.0 (Macintosh; Intel Mac OS X 10\_13\_6) AppleWebKit/537.36 (KHTML, like Gecko) Chrome/69.0.3497.100 Safari/537.36
- **User agent (network):** Mozilla/5.0 (Linux; Android 6.0.1; Nexus 5 Build/MRA58N) AppleWebKit/537.36(KHTML, like Gecko) Chrome/71.0.3559.0 Mobile Safari/537.36
- **CPU/Memory Power:** 1222

---

Generated by **Lighthouse** 3.2.1 | [File an issue](#)