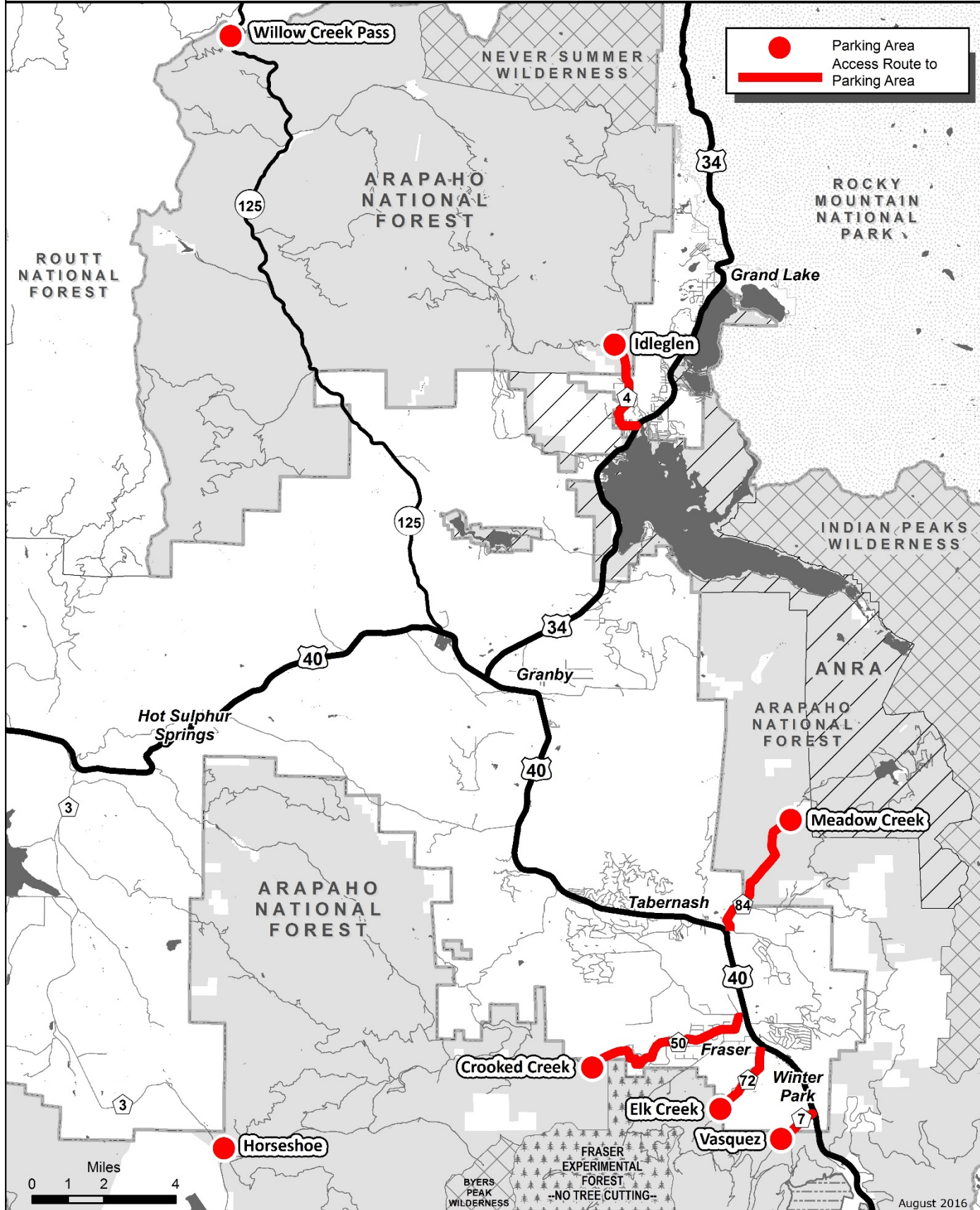


Christmas Tree Cutting Forest Access Routes



DISCLAIMER: This product is reproduced from geospatial information prepared by the USDA Forest Service. Geospatial data and product accuracy may vary. Using geospatial products for purposes other than those for which they were created may yield inaccurate or misleading results. The USDA Forest Service reserves the right to correct, update, modify, or replace geospatial products without notification. For more information contact the Arapaho/Roosevelt National Forest Supervisors Office at (970) 295-6600.