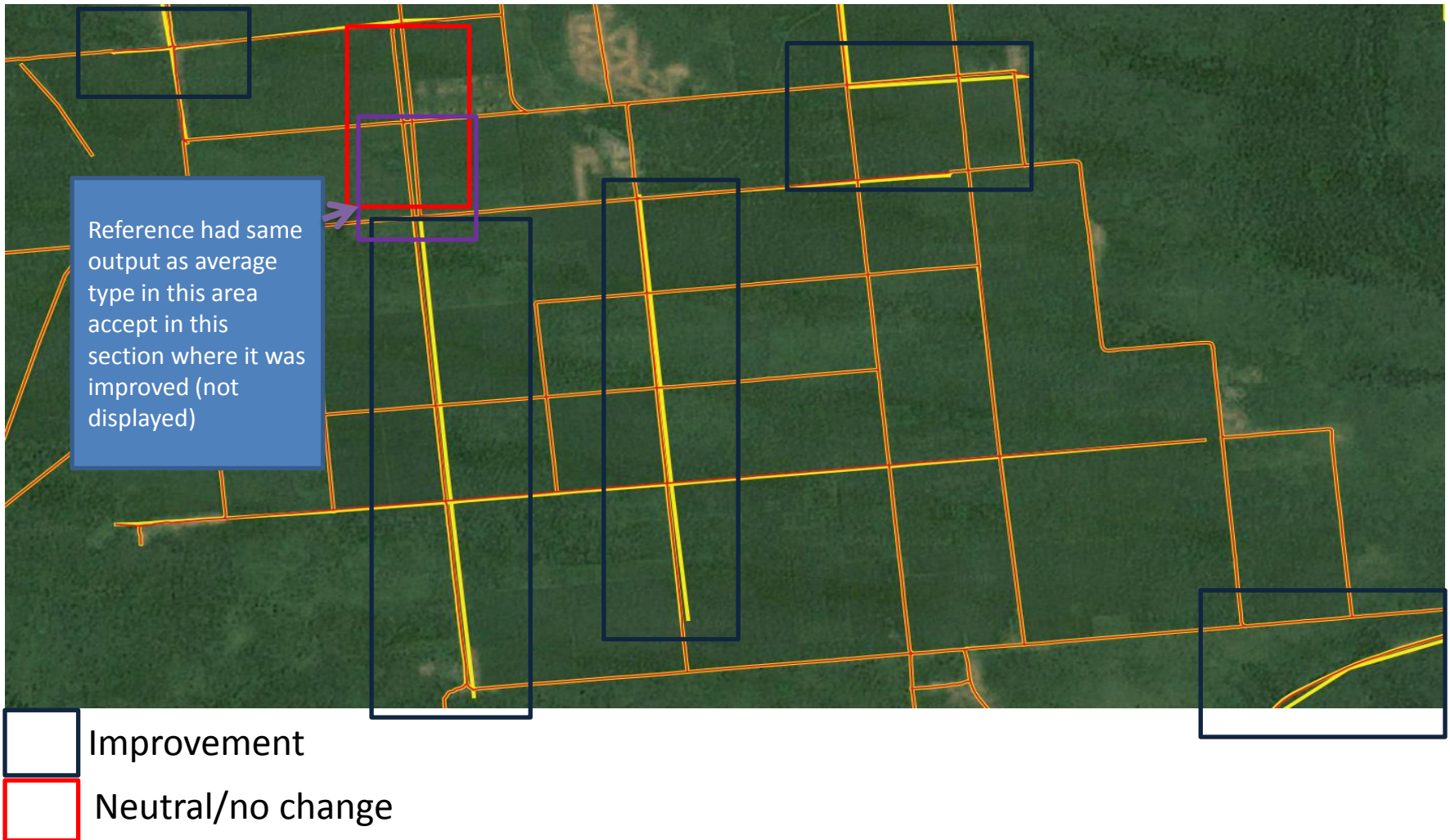


Congo road conflation testing

Adjusted all roads to increase threshold to 80m (error:circular=80) based on general distance measurements determined through arc.

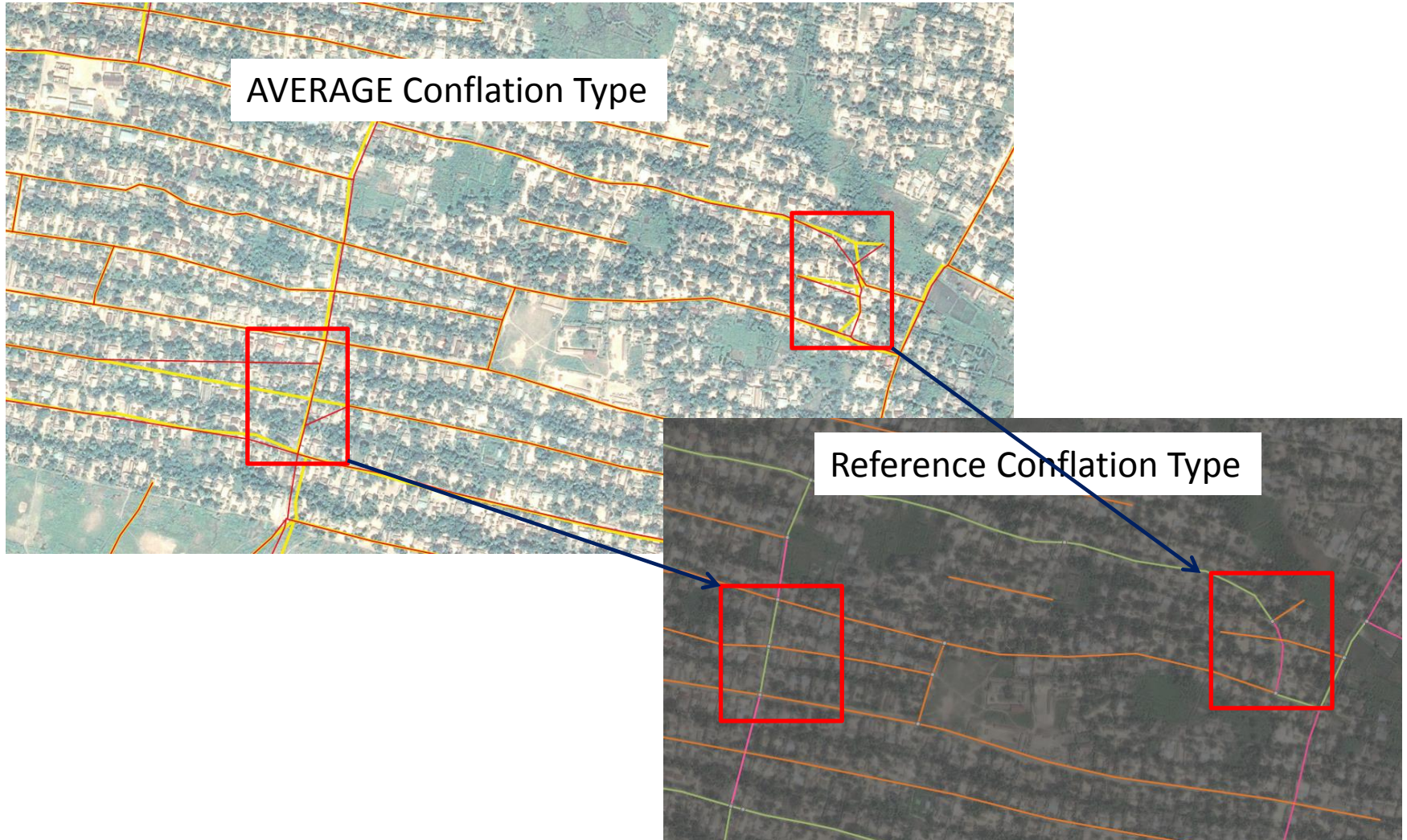
Ran “average” and “reference” conflation type and examined sample rural and dense area's to see how this change may impact conflation output.

Rural areas with 80m threshold applied improves output in both Average and Reference type (red roads=threshold applied average type; yellow= threshold left at default)



Dense areas with 80m thresh applied

- Moves intersections in average conflation
 - Did not move intersections with Reference conflation
- (red roads=threshold applied; yellow= threshold left at default)



Initial Comments

based on small sample and unique to this ao (more testing needed)

- Apply manual threshold adjustment to rural areas only to avoid intersection issues created when running Average conflation
- Did not yet identify issues when running reference conflation, however this output is a specific distance value in unique AO so should remain cautious when applying and users should evaluate reason for applying.