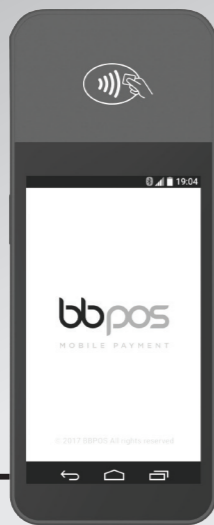


bbpos

WisePOS™ E

Android based Smart device



www.bbpos.com

Index

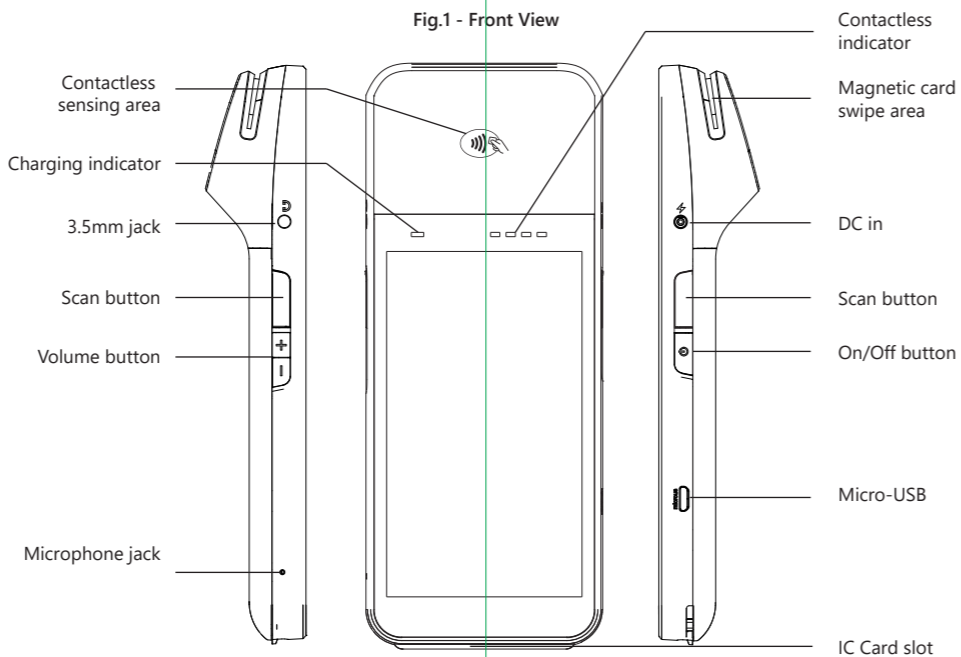


Fig.2 - Rear View

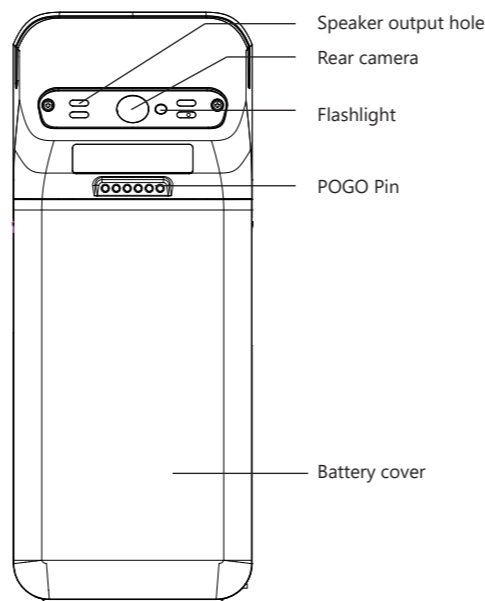
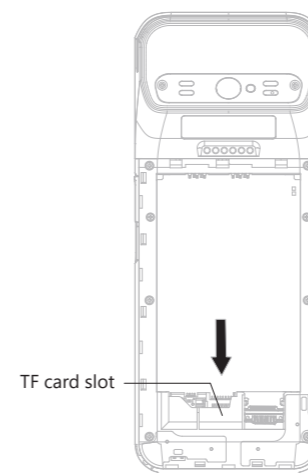


Fig.3 - Rear View (without battery cover)



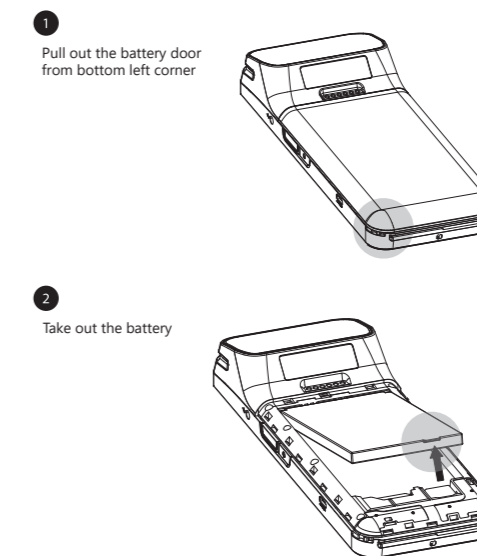
CAUTION: Please don't point or damage the internal components when the back housing is opened. Any intentional damage may void the warranty and cause device malfunction.

Package Contents

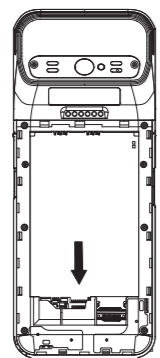
Device	x1	Quick start guide	x1
USB to DC cable	x1	Rechargeable battery	x1

Quick Start Guide

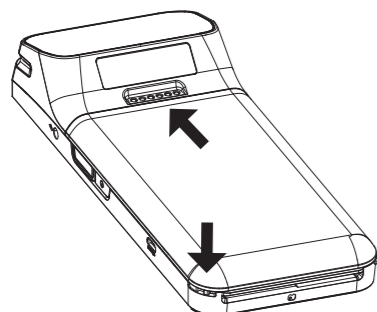
IMPORTANT: Push and slide the battery door button to open the battery door of WisePOS™ E to insert the rechargeable battery into the battery compartment, and SD card to card slots properly, then lock the cover again for battery charging via USB-DC cable before use.



3 Install SD card with your preference



4 Install the battery and put back the battery door



Troubleshooting

Problems	Recommendations
Device cannot read your card successfully	<ul style="list-style-type: none"> Please check if the device has power when operating and ensure devices are connected. Please check if the application instructs to swipe or insert card. Please ensure there is no obstacle in the card slots. Please check if the magstripe or chip of the card is facing the right direction when swiping or inserting card. Please swipe or insert card with a more constant speed.
Device cannot read your card successfully through NFC	<ul style="list-style-type: none"> Please check if your card supports NFC payment. Please ensure that if your card is placed within 4 cm range on top of the NFC marking. Please take out your NFC payment card from wallet or purse for payment to avoid any interference.
Device has no response	<ul style="list-style-type: none"> Please check if the rechargeable battery is properly inserted. Please check if the device is fully charged. Please restart the device for retry.
Device is Frozen	<ul style="list-style-type: none"> Please hold the power button for 6 seconds to restart.

Cautions & Important Notes

- Please fully charge your WisePOS™ E before use.
- Please ensure magstripe /EMV chip of the card is facing the right direction when swiping or inserting card.
- Don't drop, disassemble, tear open, crush, bend, deform, puncture, shred, microwave, incinerate, paint, or insert foreign object into the device. Doing any of which will void the Warranty.
- Don't immerse the device into water and place near washbasins or any wet locations. Don't spill any food or liquid on the device. Don't attempt to dry the device with external heat sources, such as microwave or hair dryer.
- Don't use any corrosive solvent or water to clean the device. Recommend using dry cloth to clean the surface only.
- Don't use any sharp tools to point the internal components or connectors, doing which may lead to malfunction and void the Warranty.
- Don't try to disassemble the device to repair. Please contact your dealer for repair and maintenance.
- Only suitable use for output DC 5V, 2000mA (max). CE approval AC adaptor, other electrical rating of AC adaptor is prohibited.

ISED Statement

Déclaration ISED
 This device contains licence-exempt transmitter(s)/receiver(s) that comply with Innovation, Science and Economic Development Canada's licence-exempt RSS(s). Operation is subject to the following two conditions:
 1. This device may not cause interference.
 2. This device must accept any interference, including interference that may cause undesired operation of the device.
 L'émetteur/récepteur exempt de licence contenu dans le présent appareil est conforme aux CNR d'Innovation, Sciences et Développement économique Canada applicables aux appareils radio exempts de licence. L'exploitation est autorisée aux deux conditions suivantes :
 1. L'appareil ne doit pas produire de brouillage.
 2. L'appareil doit accepter tout brouillage radioélectrique subi, même si le brouillage est susceptible d'en compromettre le fonctionnement.

FCC/ISED Caution Statement

FCC Supplier's Declaration of Conformity
 BBPOS / WisePOS E (W5C50, W5C51, W5C52, W5C53)
 This device complies with Part 15 of the FCC Rules. Operation is subject to the following two conditions: (1) This device may not cause harmful interference, and (2) this device must accept any interference received, including interference that may cause undesired operation.

BBPOS Corp.
 970 Reserve Drive, Suite 132 Roseville, CA 95678
 www.bbpos.com
 Caution: Any changes or modifications not expressly approved by the party responsible for compliance could void the user's authority to operate the equipment.

This equipment has been tested and found to comply with the limits for a Class B digital device, pursuant to part 15 of the FCC rules. These limits are designed to provide reasonable protection against harmful interference in a residential installation. This equipment generates, uses and can radiate radio frequency energy and, if not installed and used in accordance with the instructions, may cause harmful interference to radio communications. However, there is no guarantee that interference will not occur in a particular installation. If this equipment does cause harmful interference to radio or television reception, which can be determined by turning the equipment off and on, the user is encouraged to try to correct the interference by one or more of the following measures:
 - Reorient or relocate the receiving antenna.
 - Increase the separation between the equipment and receiver.
 - Connect the equipment into an outlet on a circuit different from that to which the receiver is connected.
 - Consult the dealer or an experienced radio/TV technician for help.

This transmitter must not be co-located or operating in conjunction with any other antenna or transmitter.

Frequency Bands & Transmitted (Power)

	Operation Frequency	Transmitted
GSM850	820-850 MHz	33.5dBm
GSM900	880-915 MHz	33dBm
GSM1800	1710-1785 MHz	29.5dBm
GSM1900	1850-1910 MHz	30dBm
WCDMA BAND 1	1920-1980 MHz	22.5dBm
WCDMA BAND 2	1850-1910 MHz	23.5dBm
WCDMA BAND 5	825-850MHz	23.5dBm
WCDMA BAND 8	880-915MHz	23dBm
LTE BAND 1	1920-1980 MHz	22dBm
LTE BAND 3	1710-1785 MHz	22dBm
LTE BAND 5	825-850MHz	22dBm
LTE BAND 7	2500-2570 MHz	22dBm
LTE BAND 8	880-915 MHz	22dBm
LTE BAND 38	2570-2620 MHz	22dBm
LTE BAND 40	2300-2400 MHz	21.5dBm
LTE BAND 41	2535-2655 MHz	22dBm
BT	2402-2480 MHz	5.25dBm
BLE	2402-2480 MHz	-1dBm
WIFI-2.4G	2412-2472 MHz	18dBm(CE)
	2412-2462 MHz	18dBm(FCC)
WIFI-5G	5150-5250 MHz	12dBm(CE)
	5745-5825 MHz	11dBm(CE)
	5180-5240 MHz	12dBm(FCC)
	5745-5825 MHz	11dBm(FCC)

Need Help?
 E: sales@bbpos.com | T: +852 3158 2585

bbpos

Room 1903-04, 19/F, Tower 2, Nina Tower, No. 8 Yeung Uk Road, Tsuen Wan, Hong Kong
 www.bbpos.com

©2017 BBPOS Limited. All rights reserved. BBPOS and WisePad™ are either trademark or registered trademarks of BBPOS Limited. iOS is the trademark of Apple Inc. Android™ is a trademark of Google Inc. Windows® is registered trademark of Microsoft Corporation in the United States and/or other countries. The Bluetooth® word mark and logos are registered trademarks owned by Bluetooth SIG, Inc. and any use of such marks by BBPOS Limited is under license. Other trademarks and trade names are those of their respective owners. All details are subject to change without prior notice.