

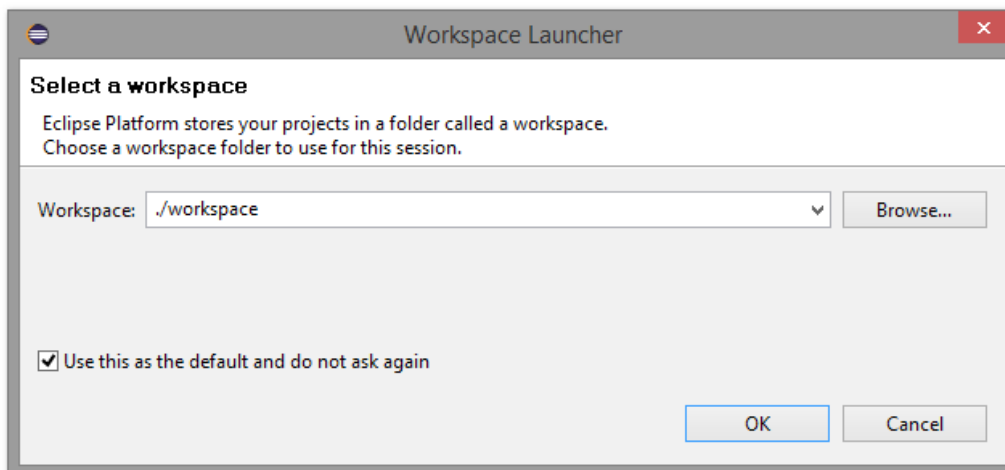
CloudDesigner v0.1.0 Tutorial

Install & Launch

Download CloudDesigner here : <http://www.obeo.fr/download/occiware/>

If you installed a previous version, you can update it using the Update-site.

Unzip the bundle, then launch the eclipse application.

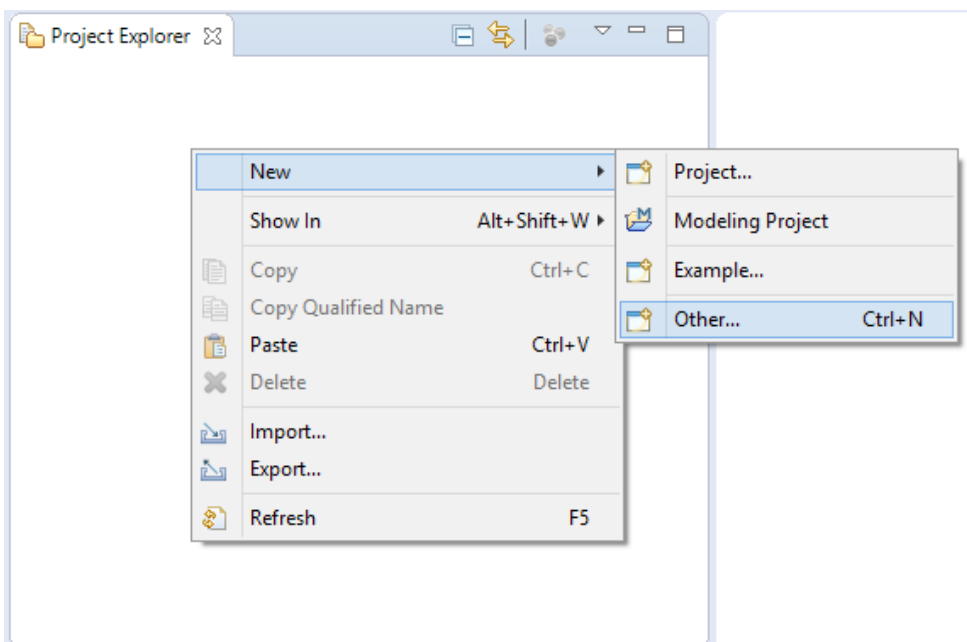


You can type « ./workspace » to locate the workspace under the CloudDesigner installation directory.

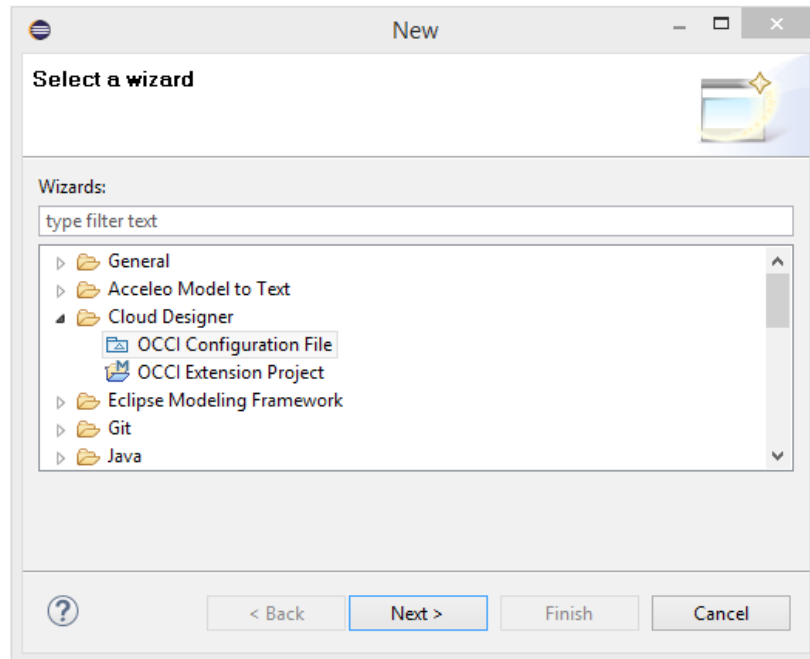
The OCCI Extension Designer

This tool allow to create new OCCI extensions, which can be used to define configurations and to generate tooling. To create a new extension, follow the steps below :

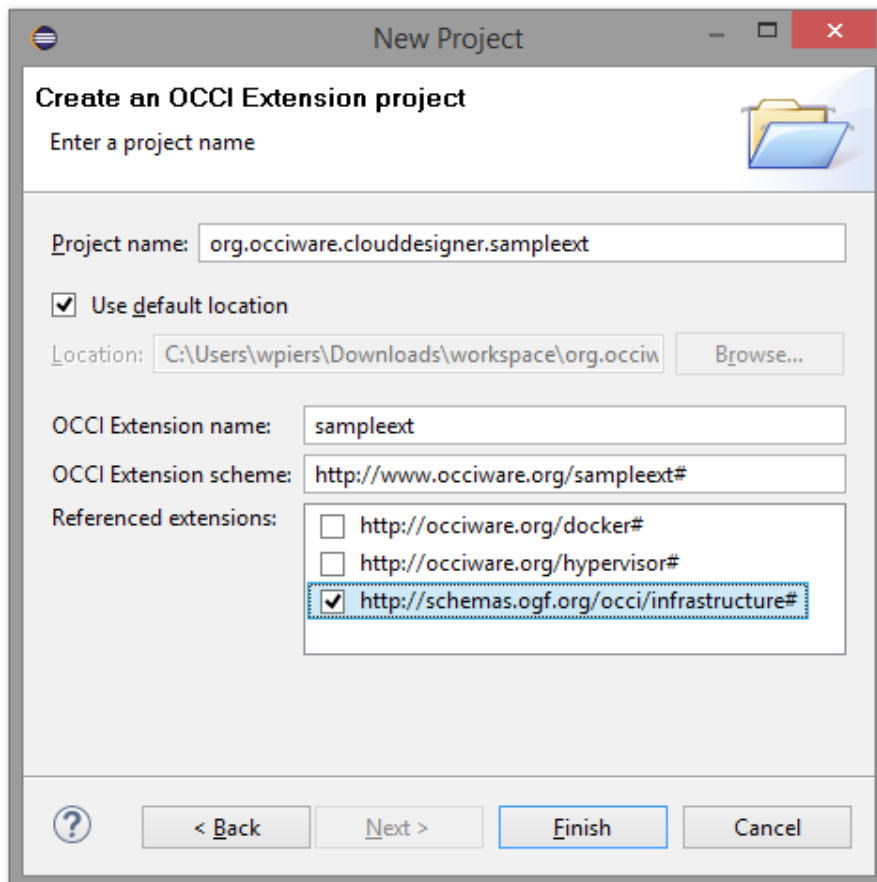
- Right-click on the project explorer



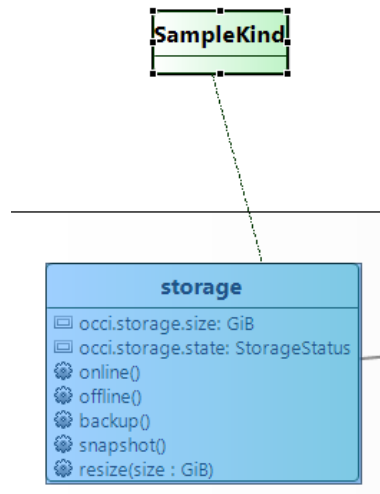
- select « Other » then « OCCI Extension Project »



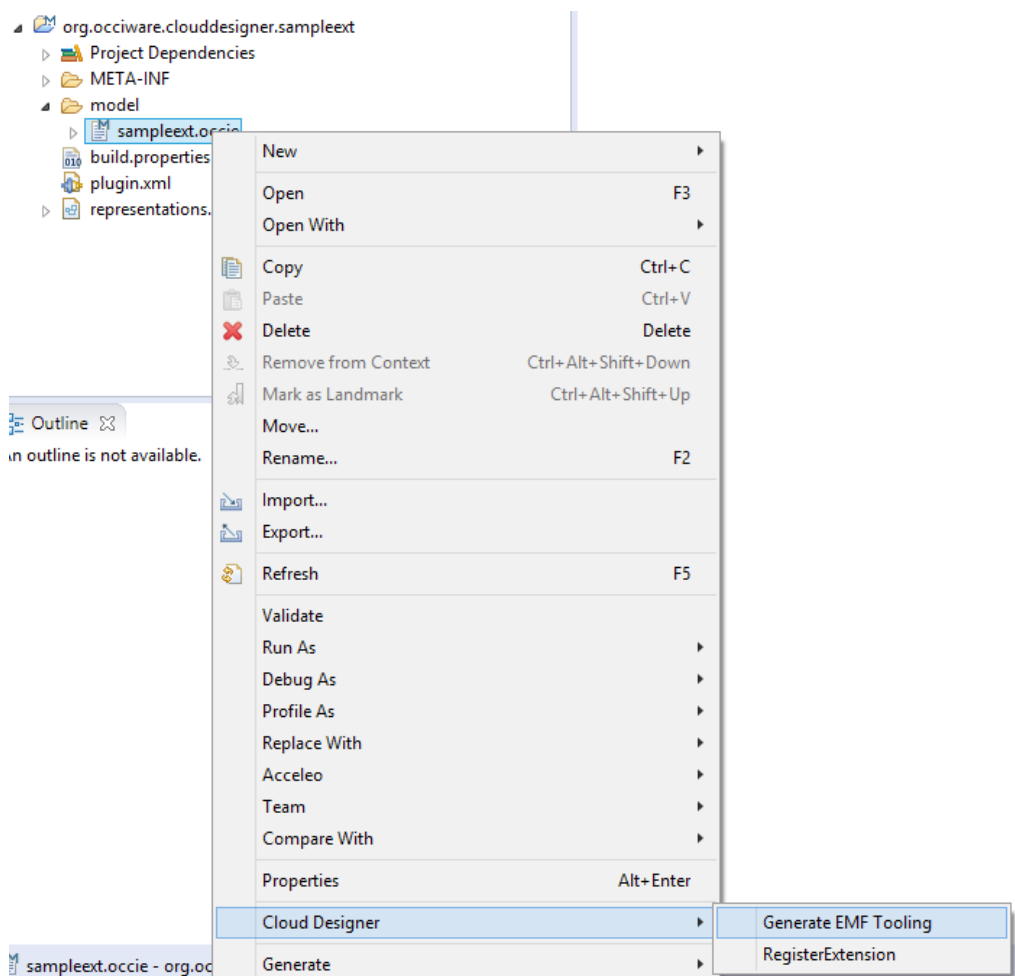
- fill the project name (it is advised to put a namespace first then the extension name, like in « my.company.extensionname »)



- Once the diagram is open you can create elements. To attach a kind to its parent you can use the parent edge tool or set the parent in the property view, in the Semantic tab.

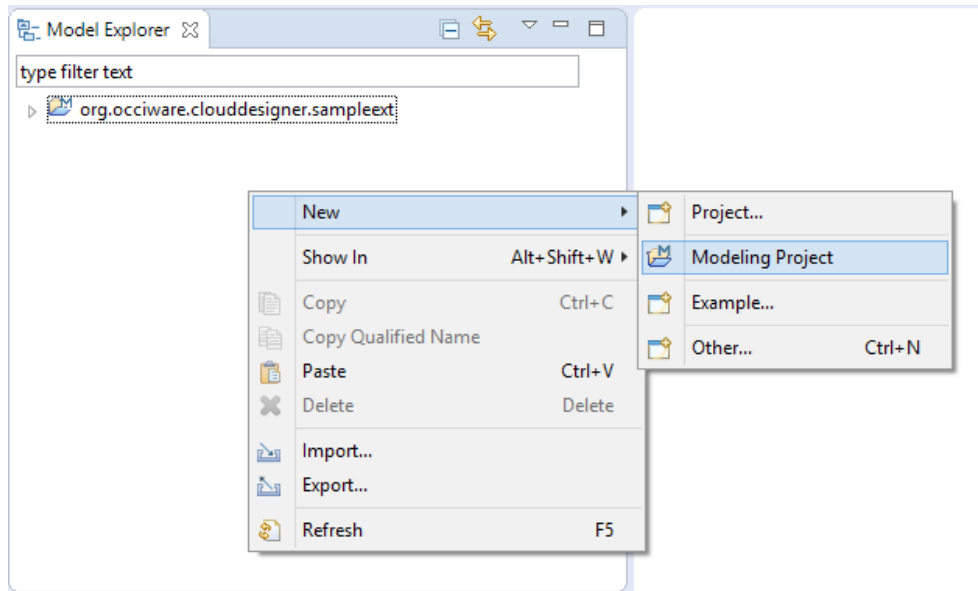


When the extension is ready to use, you can check its correctness by validating it (right-click in the background of the diagram, validate). Then you can register the .occie file in order to use the extension in other models like configurations.

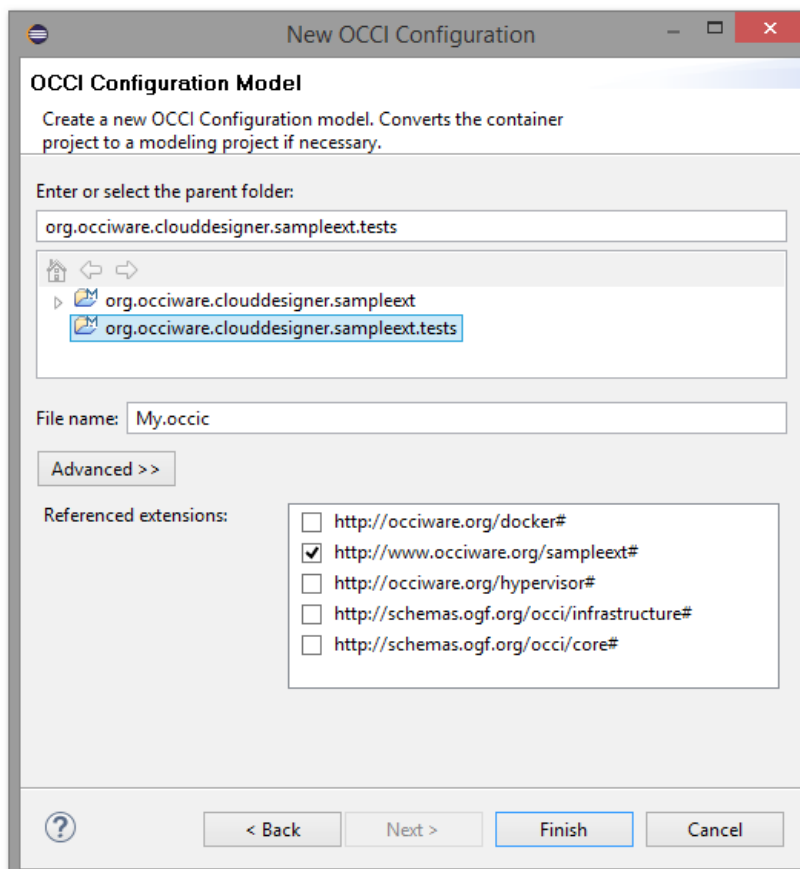


Configuration modeler

First, create a modeling project to host the configuration.



Then, right-click in project explorer > other to create this time a configuration. If you the new extension has been correctly registered, you can select it.



Finally, you can create the configuration.

The screenshot displays an ontology editor interface. At the top, a diagram shows three classes: **R1: SampleKind** (URI: <http://www.occipare.org/sampleext#SampleKind>), **R2: compute** (URI: <http://schemas.opengis.net/infrastructure#compute>), and **I12: storagelink** (URI: <http://schemas.opengis.net/infrastructure#storagelink>). Arrows indicate that **R1: SampleKind** and **R2: compute** are subclasses of **I12: storagelink**. The **I12: storagelink** class has an attribute `occi:storagelink.deviceid= 12`.

On the right side, a sidebar shows a tree view with the following structure:

- Resource
 - Link
 - Attribute
 - Attribute

At the bottom, a **Properties** window is open, showing the **Attribute State** for the selected class. The table below represents the data shown in this window:

Property	Value
Appearance	
Semantic	
Style	
Attribute State	
Name	[SampleKind] sampleAttribute:String
Value	[entity] occi:core:title:String [resource] occi:core.summary:String [storage] occi:storage.size:GB [storage] occi:storage.state:StorageStatus [SampleKind] sampleAttribute:String