

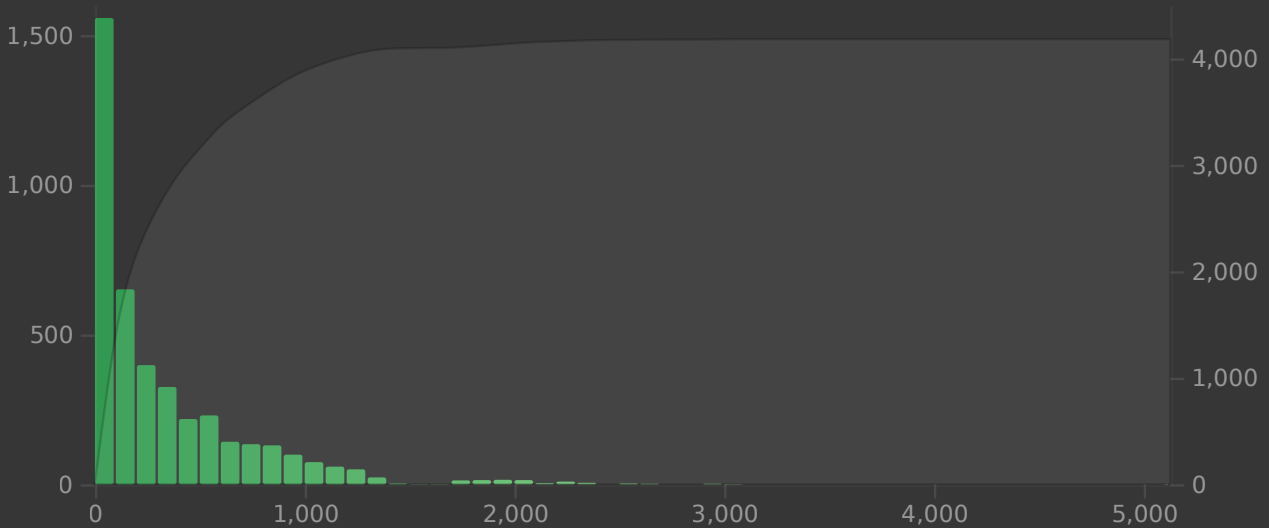
Today

No cards have been studied today.

Future Due

The number of reviews due in the future.

Backlog 1 month 3 months 1 year all



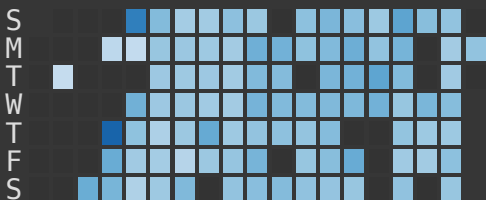
Total: 4,181 reviews

Average: 1 review/day

Due tomorrow: 64 reviews

Calendar

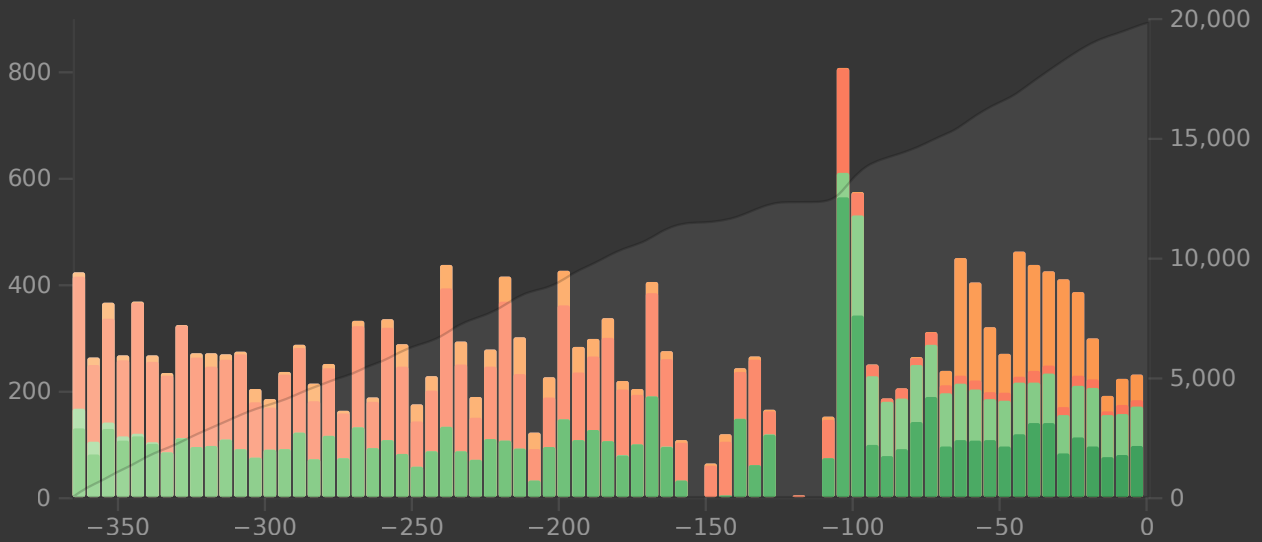
◀ 2024 ▶



Reviews

The number of questions you have answered.

Time 1 month 3 months 1 year



Days studied: 288 of 365 (78.9%)

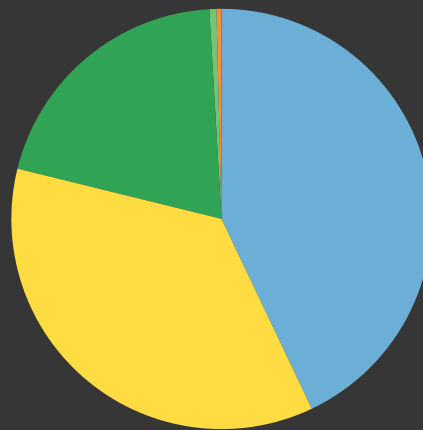
Total: 19,784 reviews

Average for days studied: 69 reviews/day

Average over period: 54 reviews/day

Card Counts

Separate suspended/buried cards

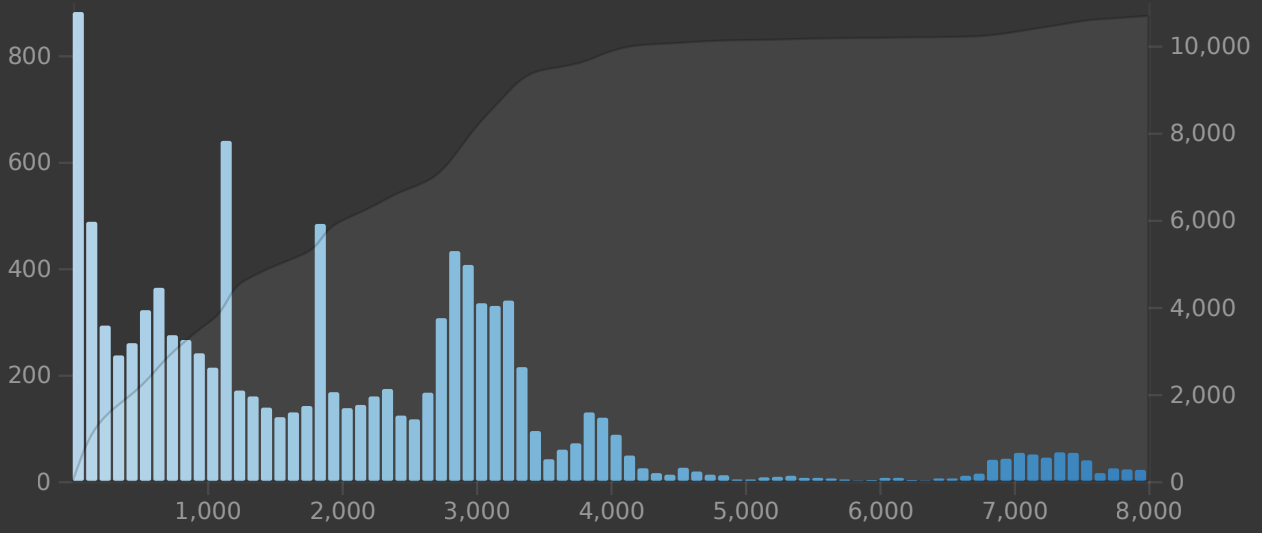


<input checked="" type="checkbox"/> New	8,485	42.93%
<input type="checkbox"/> Learning	73	0.37%
<input type="checkbox"/> Relearning	3	0.02%
<input type="checkbox"/> Young	107	0.54%
<input type="checkbox"/> Mature	3,998	20.23%
<input type="checkbox"/> Suspended	7,097	35.91%
<input type="checkbox"/> Buried	0	0%
Total	19,763	

Review Intervals

Delays until reviews are shown again.

1 month 50% 95% all

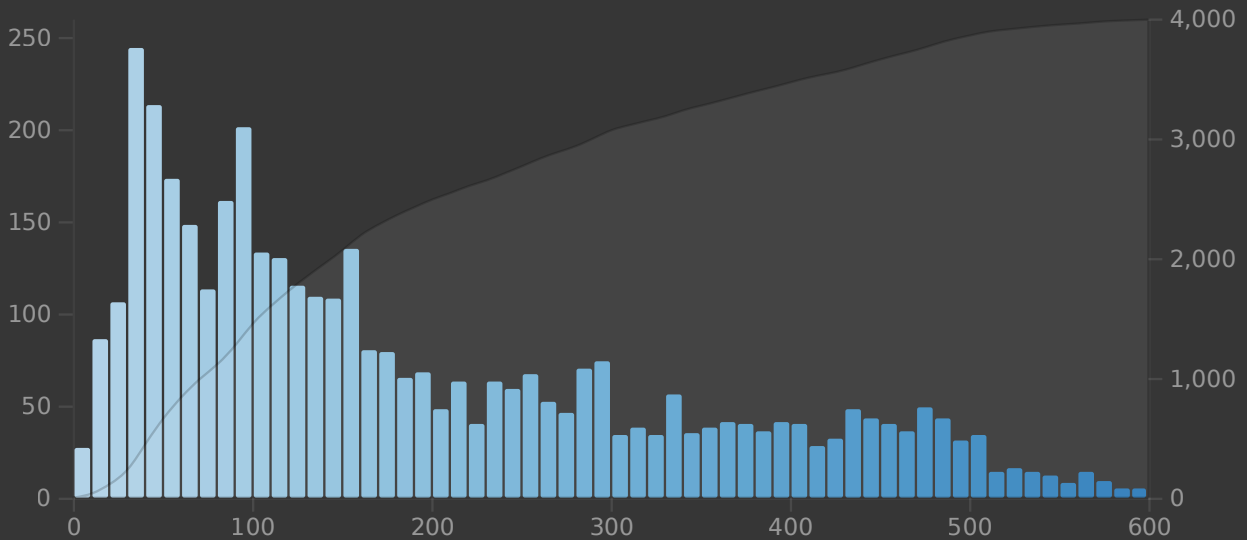


Average interval: 6.36 years

Card Stability

The delay at which retrievability falls to 90%.

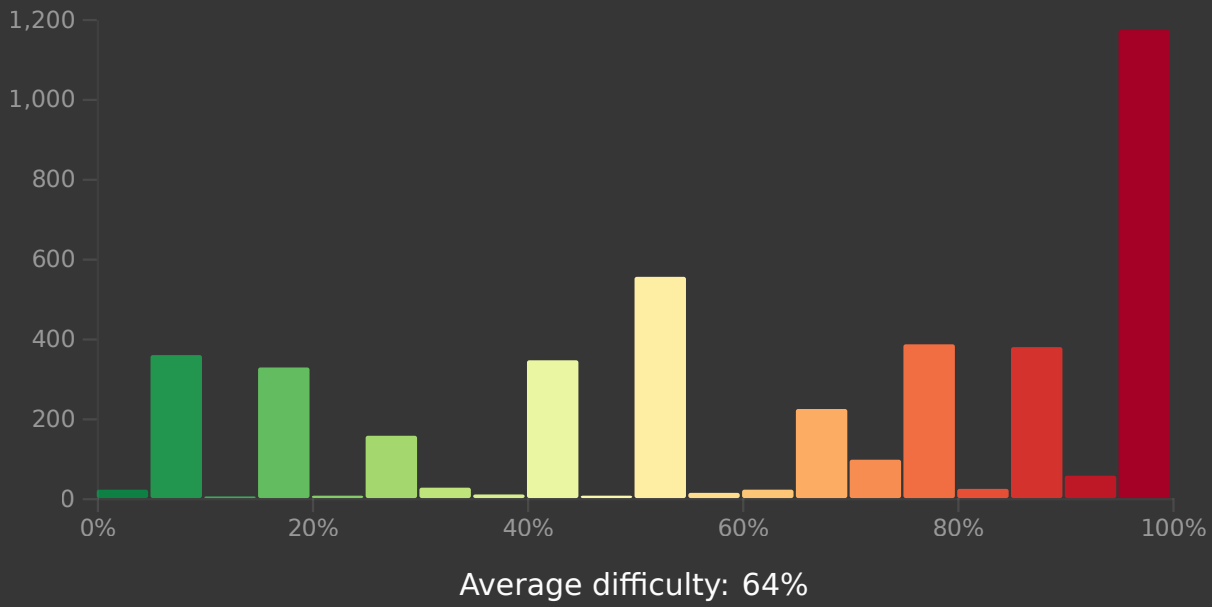
1 month 50% 95% all



Average stability: 7.33 months

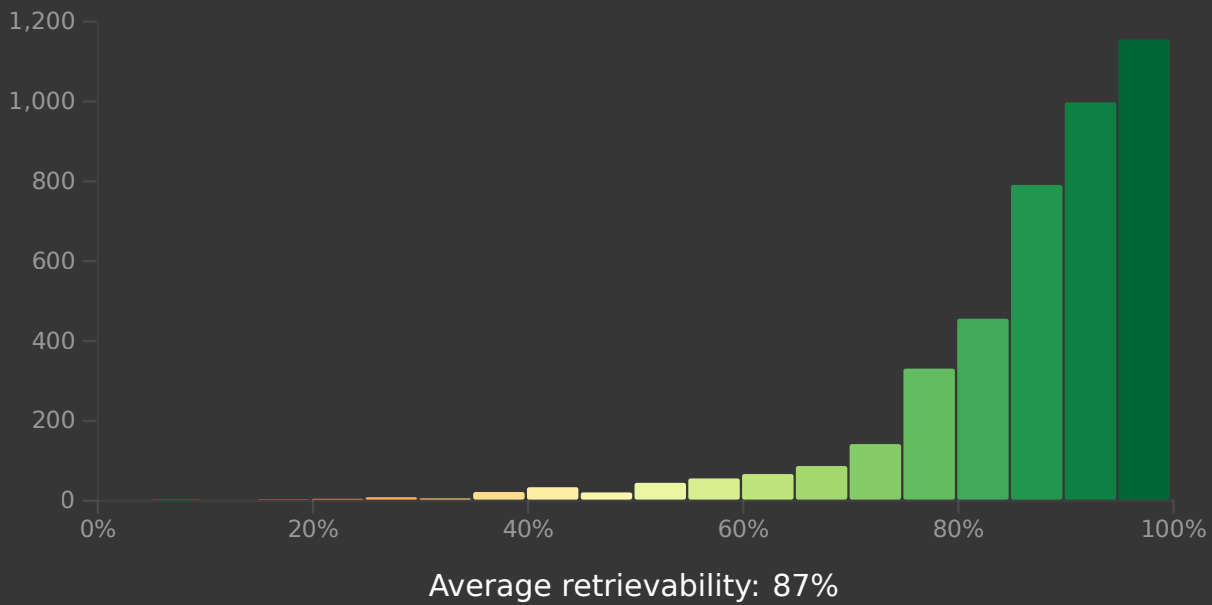
Card Difficulty

The higher the difficulty, the slower stability will increase.



Card Retrievability

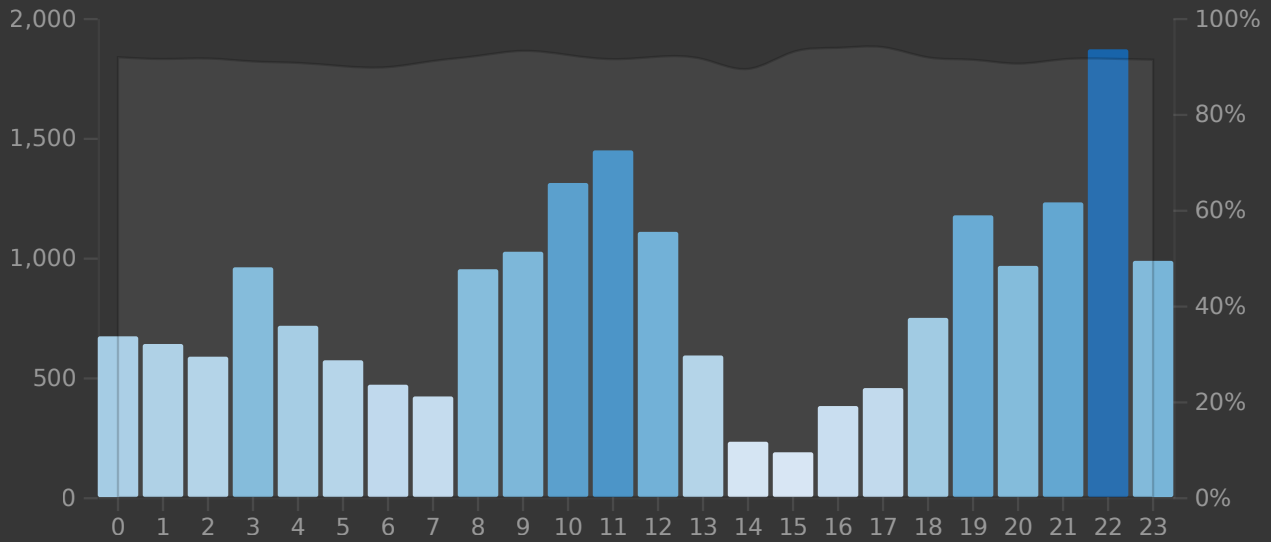
The probability of recalling a card today.



Hourly Breakdown

Review success rate for each hour of the day.

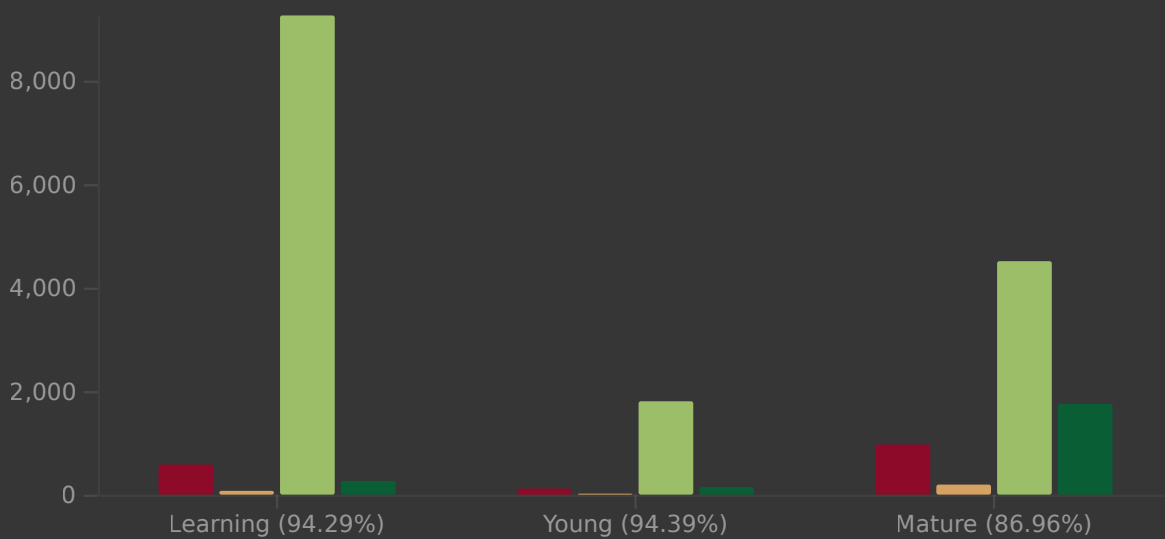
1 month 3 months 1 year



Answer Buttons

The number of times you have pressed each button.

1 month 3 months 1 year



Added

The number of new cards you have added.

1 month 3 months 1 year all

NO DATA