

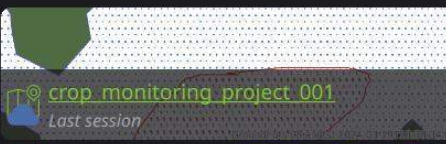


Welcome back to QField.

QFieldCloud projects

Open local file

Recent Projects



crop_monitoring_project_001
Last session



Quartier
Gestion des arbres

Load last opened project on launch

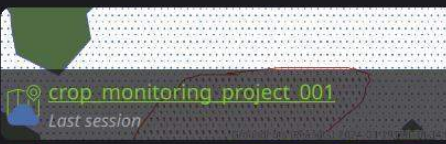


Welcome back to QField.

QFieldCloud projects

Open local file

Recent Projects



crop_monitoring_project_001
Last session



Quartier
Gestion des arbres

Load last opened project on launch



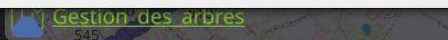
Open File

Look in: /home/seqlaz/Downloads/...Project/Sample Project

- Computer
 - seqlaz
 - Basic Survey Data.gpkg
 - Template.qgz

File name: Template.qgz

Files of type: All Supported Files (*.qgs *.qgz *.gpkg *.shp *.kml *.kmz *.geojson *.json)



Load last opened project on launch



Loading Template



Unknown



Lat: 12.1518000

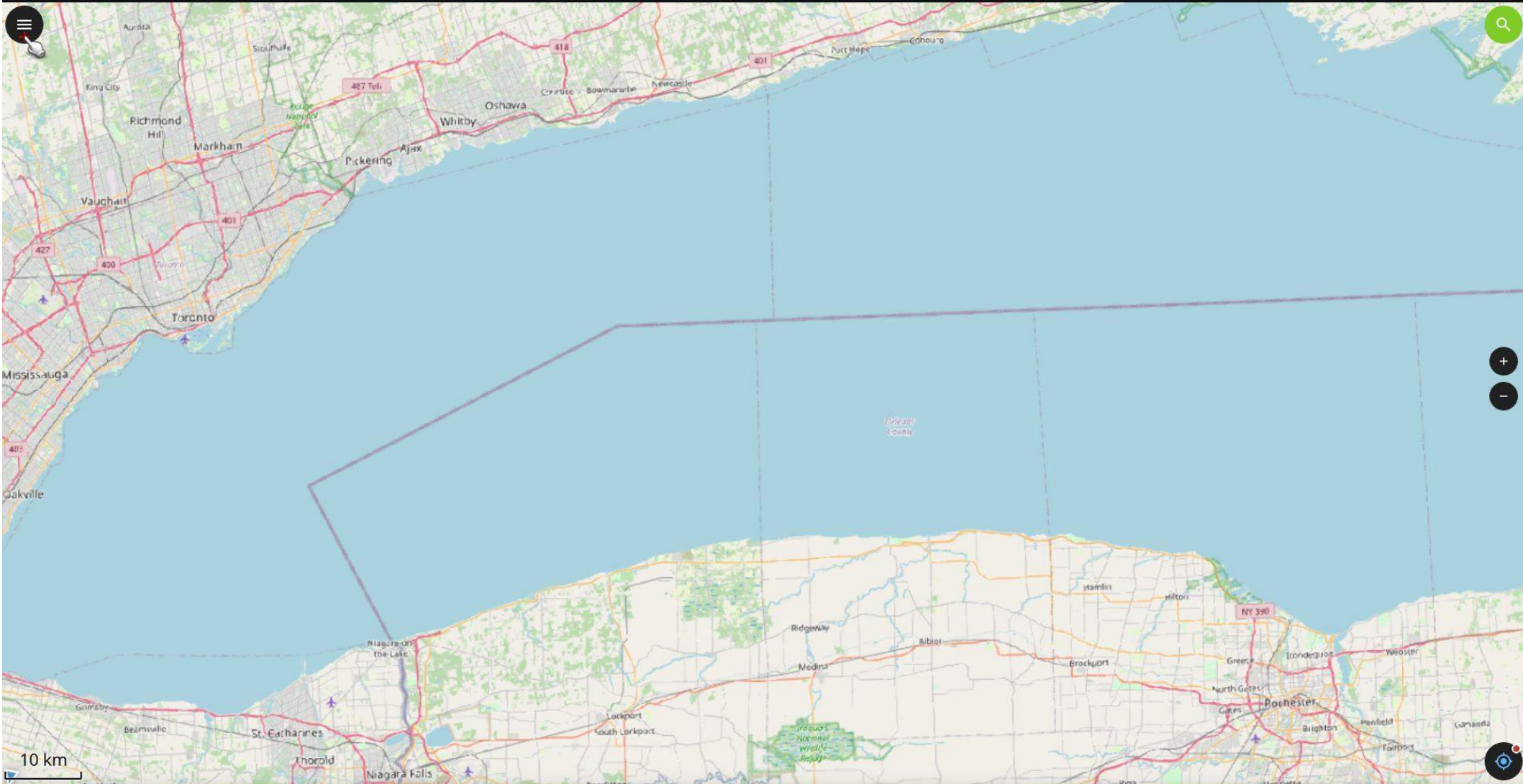
Lon: -86.2711000

Altitude: N/A

Speed: 0.000 m/s

H. Accuracy: 25,000.000 m

V. Accuracy: N/A





- Notes and Tabular Data
 - Fieldnotes [0]
- Crew_data
 - Region
 - Employees [13]
- Offline Maps
- Online Maps
 - OpenStreetMap
 - Google Satellite_Scale...





Notes and Tabular Data

Fieldnotes [0]

Crew_data

Region

Employees [13]

Offline Maps

Online Maps

OpenStreetMap

Google Satellite_Scale...



Y: 1,348,911.177

Altitude: N/A

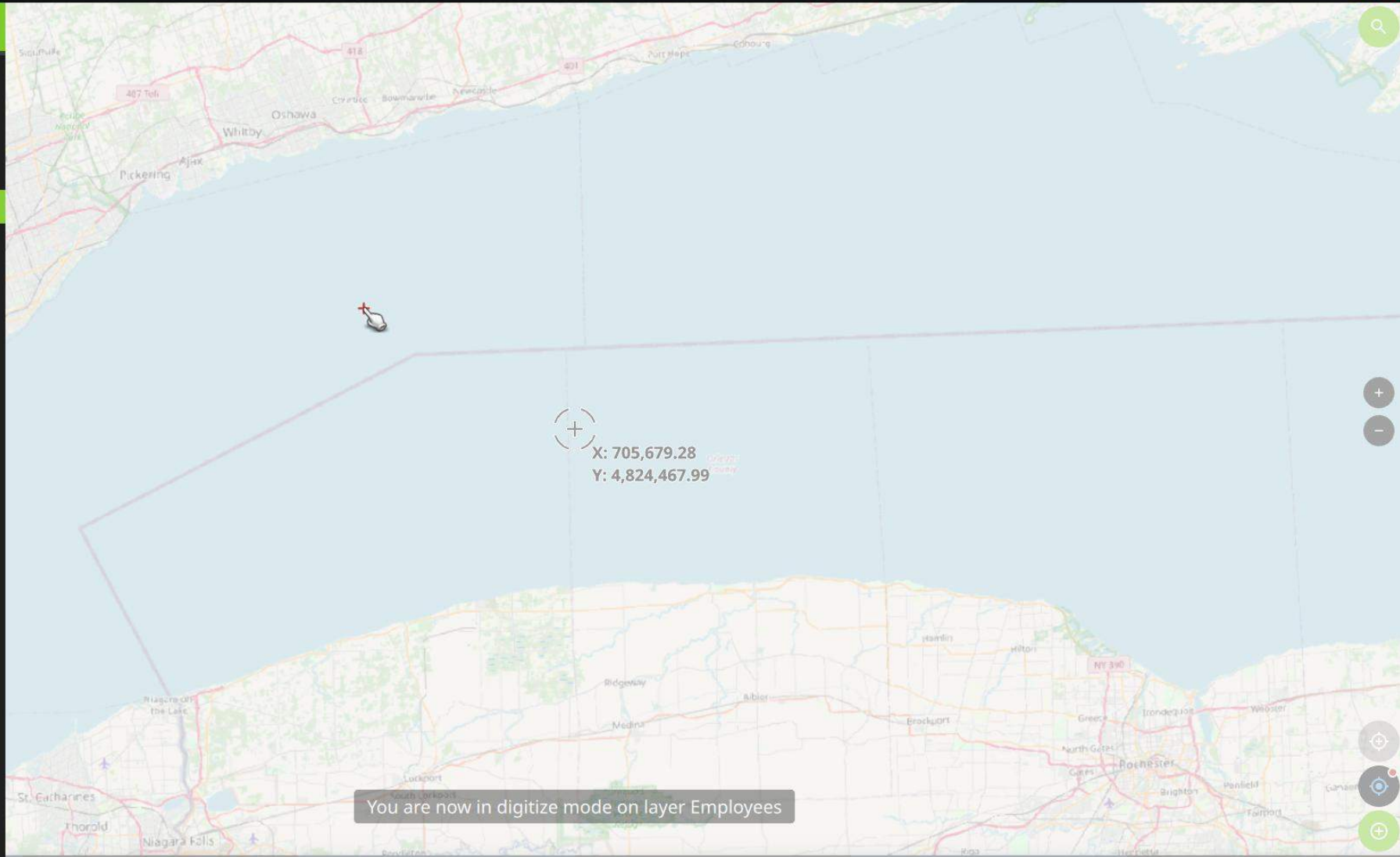
Speed: 0.000 m/s

H. Accuracy: 25,000.000 m

V. Accuracy: N/A

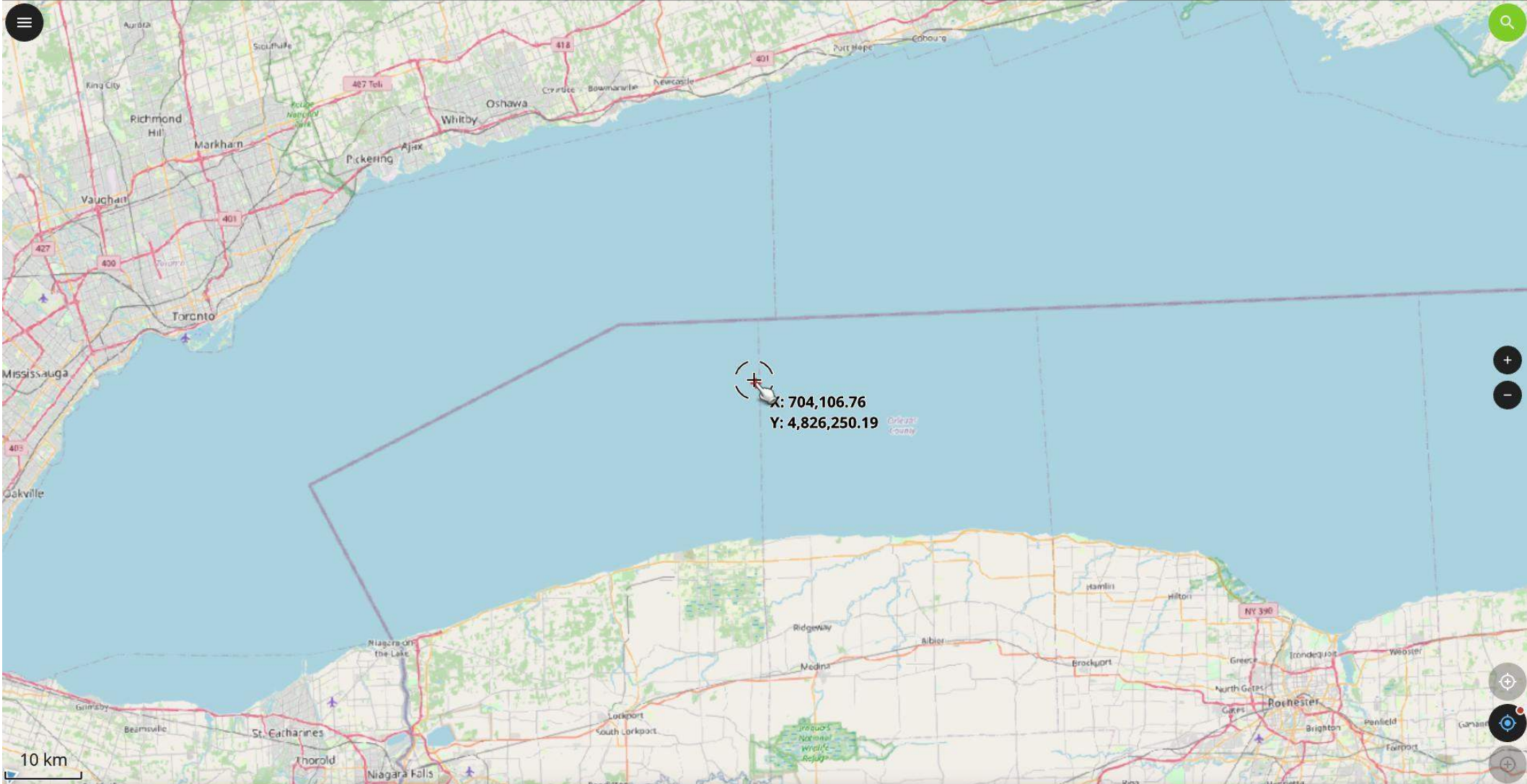


- Notes and Tabular Data
 - Fieldnotes [0]
 - Crew_data
 - Region
 - Employees [13]
- Offline Maps
- Online Maps
 - OpenStreetMap
 - Google Satellite_Scale...



X: 705,679.28
 Y: 4,824,467.99

You are now in digitize mode on layer Employees







X: 704,106.76
 Y: 4,826,250.19

Orleans County

10 km

✓ Add feature on Employees 

Name	<input type="text"/>		<input type="checkbox"/>
Role	<input type="text"/>		<input type="checkbox"/>
Region	<input type="text" value="NULL"/>		<input type="checkbox"/>
Active_int	<input type="text"/>		<input type="checkbox"/>
Active	<input type="text" value="NULL"/>	<input type="checkbox"/>	<input type="checkbox"/>

Add feature on Employees

Name

Role

Region

Active_int

true

false



Add feature on Employees



Name

SeqLaz Test



Role

Field Director



Region

Region B



Active_int

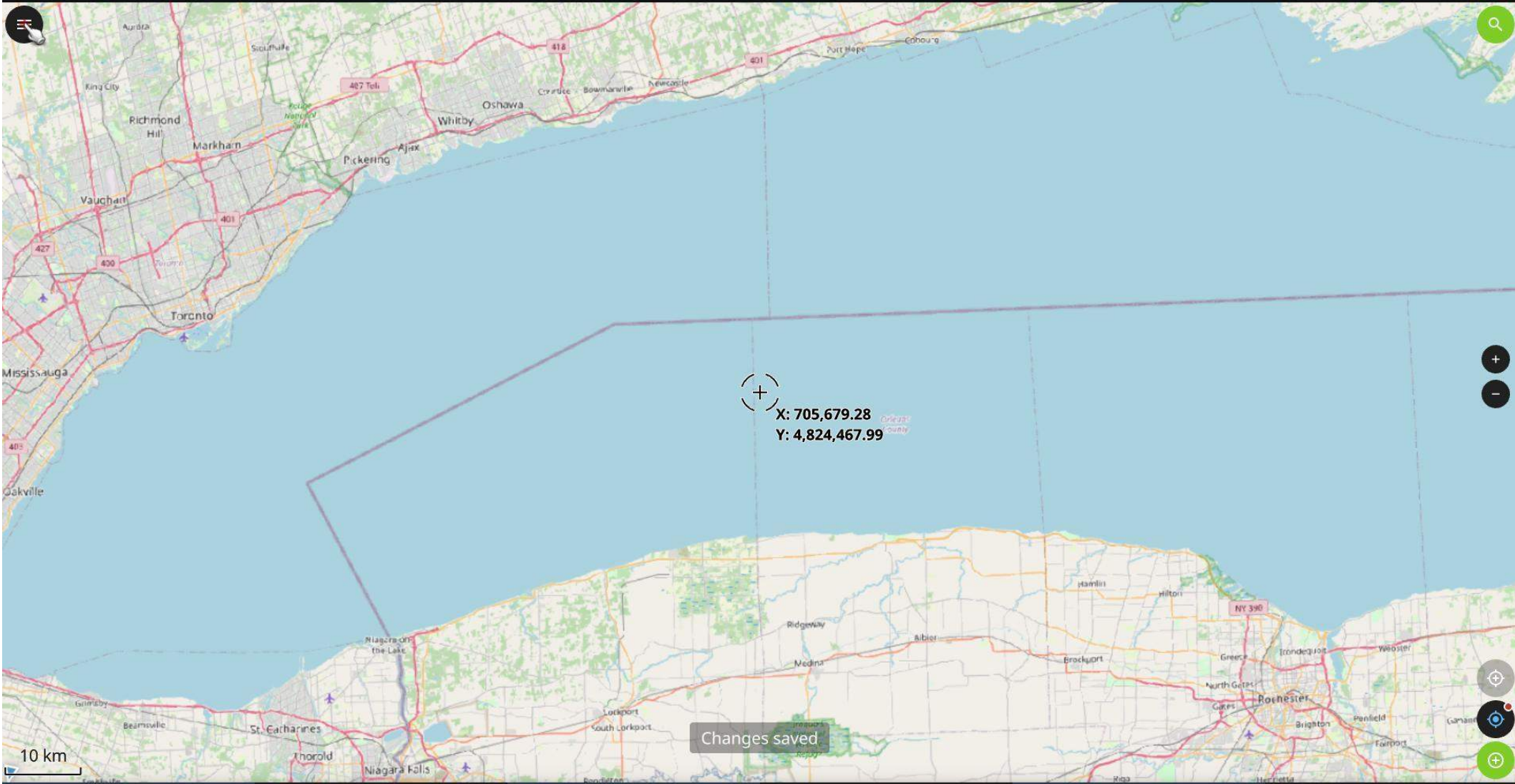
true



Active

True





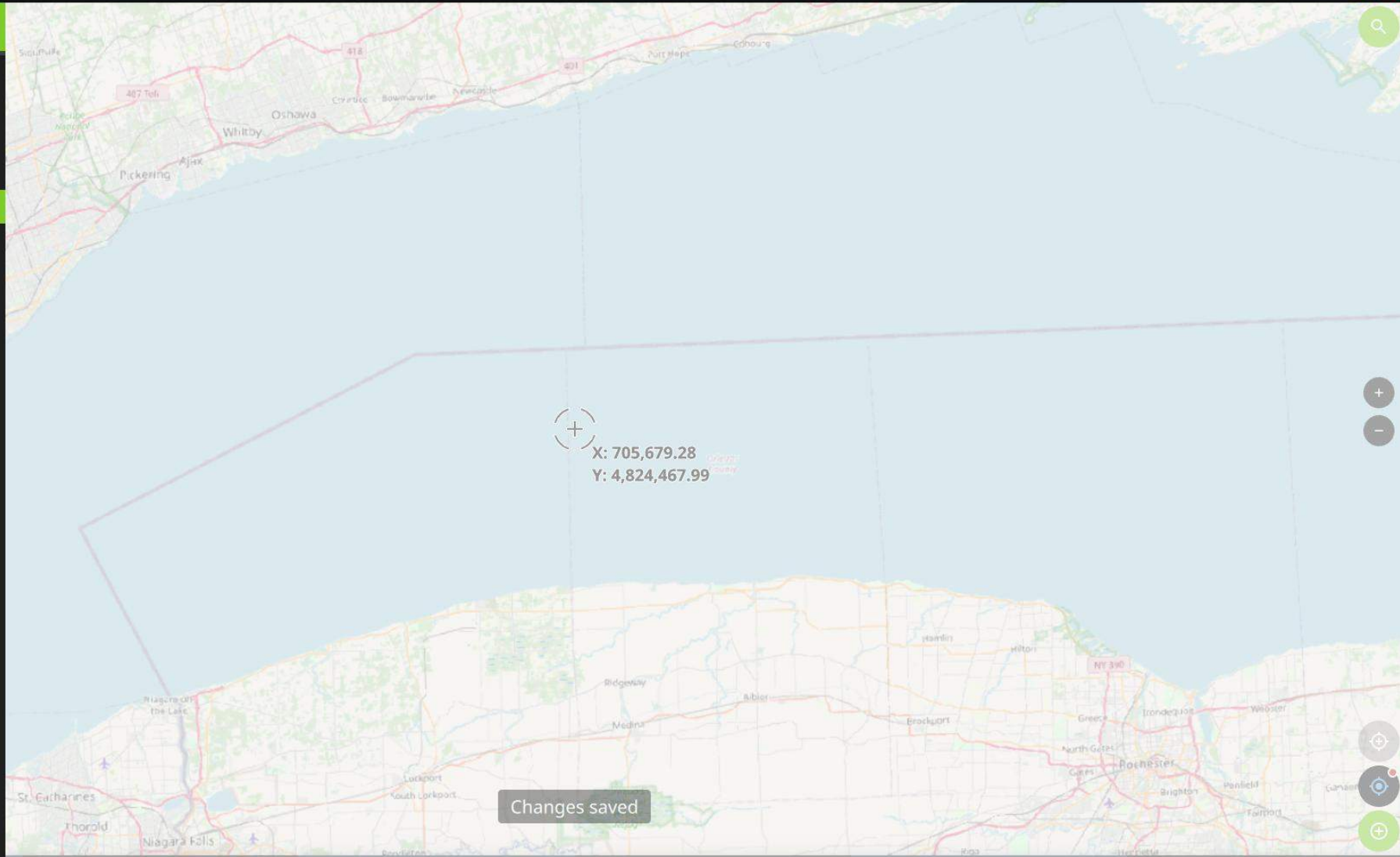
X: 705,679.28
 Y: 4,824,467.99

Changes saved

10 km



- Notes and Tabular Data
 - Fieldnotes [0]
 - Crew_data
 - Region
 - Employees [14]**
- Offline Maps
- Online Maps
 - OpenStreetMap
 - Google Satellite_Scale...

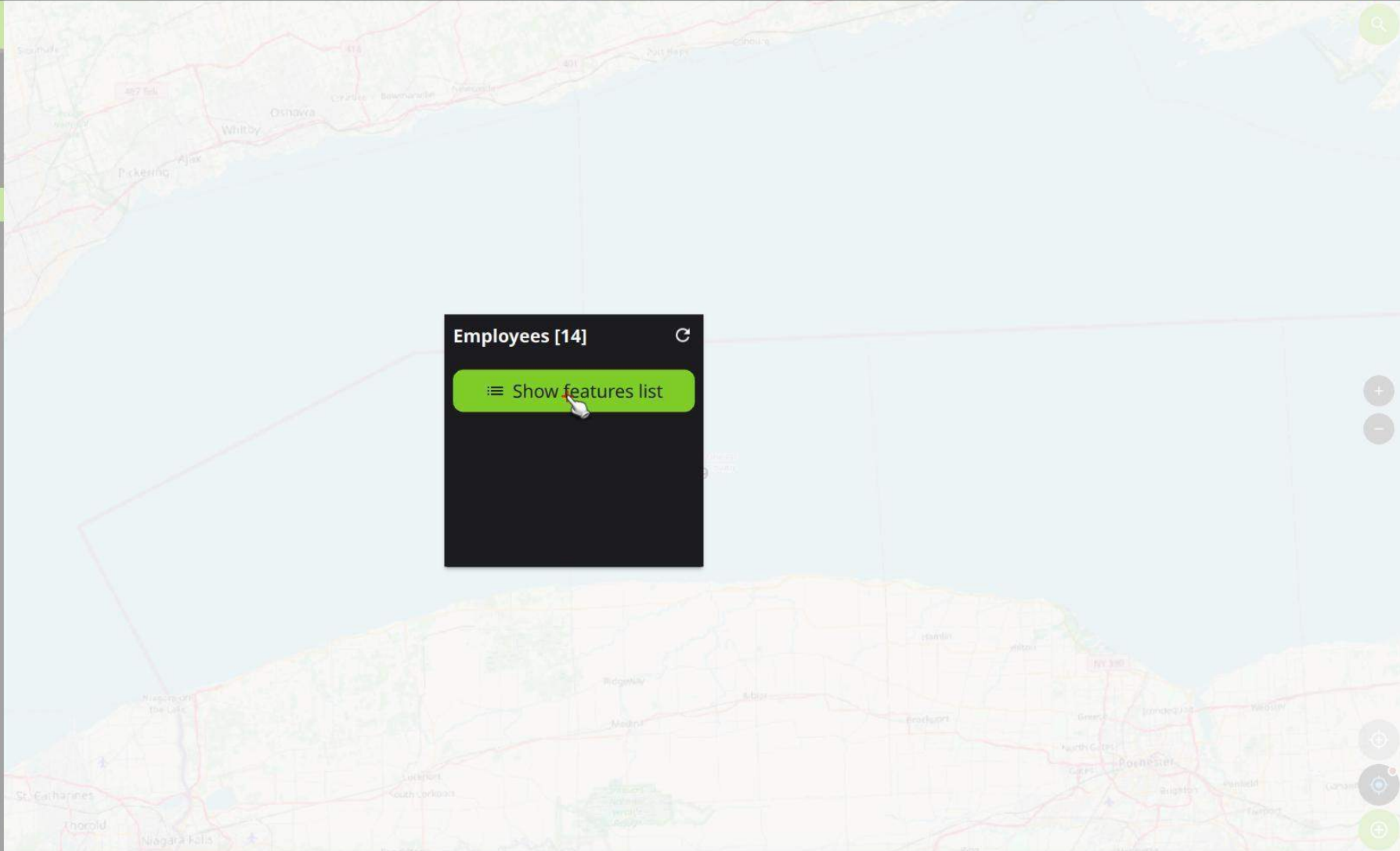


X: 705,679.28
Y: 4,824,467.99

Changes saved



- Notes and Tabular Data
 - Fieldnotes [0]
- Crew_data
 - Region
 - Employees [14]
- Offline Maps
- Online Maps
 - OpenStreetMap
 - Google Satellite_Scale...




Employees [14]

Show features list



← Features 

Employees

- Employee 1
- Employee 2
- Employee 3
- Employee 4
- Employee 5
- Employee 6
- Johnny
- Employee 7
- Employee 8
- Employee 9
- Employee 10
- Employee 11
- Employee 12
- SeqLaz Test 



Features



Employees

Employee 1

Employee 2

Employee 3

Employee 4

Employee 5

Employee 6

Johnny

Employee 7

Employee 8

Employee 9

Employee 10

Employee 11

Employee 12

SeqLaz Test

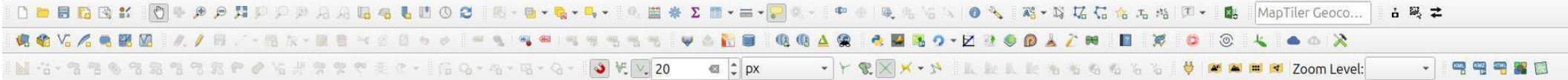




- Notes and Tabular Data
 - Fieldnotes [0]
 - Crew_data
 - Region
 - Employees [14]
- Offline Maps
- Online Maps
 - OpenStreetMap
 - Google Satellite_Scale...



X: 705,679.28
Y: 4,824,467.99



- Layers
- Notes and Tabular Data
- Fieldnotes [0]
- Crew_data
- Region
- Employees [14]
- Offline M...
- Online M...
- OpenS...
- Google

- Show Feature Count
- Show Labels
- Copy Layer
- Rename Layer
- Duplicate Layer
- Remove Layer...
- Move Out of Group
- Move to Top
- Move to Bottom
- Check and All its Parents
- Open Attribute Table
- Toggle Editing
- Filter...
- Change Data Source...
- Export
- Styles
- Add Layer Notes...
- Properties...





	Name	Role	Region	Active	Active_int
1	Employee 1	Fieldtech	Region A	true	true
2	Employee 2	Fieldtech	Region A	true	true
3	Employee 3	Fieldtech	Region A	true	true
4	Employee 4	Fieldtech	Region A	false	false
5	Employee 5	Fieldtech	Region A	false	false
6	Employee 6	Fieldtech	Region A	true	true
7	Johnny	Fieldtech	Region A	true	true
8	Employee 7	Fieldtech	Region B	true	true
9	Employee 8	Fieldtech	Region B	true	true
10	Employee 9	Fieldtech	Region B	true	true
11	Employee 10	Fieldtech	Region B	false	false
12	Employee 11	Fieldtech	Region B	false	false
13	Employee 12	Fieldtech	Region B	true	true
14	SeqLaz Test	Field Director	Region B	true	true



	Name	Role	Region	Active	Active_int
1	Employee 1	Fieldtech	Region A	true	true
2	Employee 2	Fieldtech	Region A	true	true
3	Employee 3	Fieldtech	Region A	true	true
4	Employee 4	Fieldtech	Region A	false	false
5	Employee 5	Fieldtech	Region A	false	false
6	Employee 6	Fieldtech	Region A	true	true
7	Johnny	Fieldtech	Region A	true	true
8	Employee 7	Fieldtech	Region B	true	true
9	Employee 8	Fieldtech	Region B	true	true
10	Employee 9	Fieldtech	Region B	true	true
11	Employee 10	Fieldtech	Region B	false	false
12	Employee 11	Fieldtech	Region B	false	false
13	Employee 12	Fieldtech	Region B	true	true
14	SeqLaz Test	Field Director	Region B	true	true

	A	B	C	D	E	F	G	H	I	J	K	L	M	N	O	P	Q	R	S	T	U	V
1																						
2																						
3																						
4																						
5																						
6																						
7																						
8																						
9																						
10																						
11																						
12																						
13																						
14																						
15																						
16																						
17																						
18																						
19																						
20																						
21																						
22																						
23																						
24																						
25																						
26																						
27																						
28																						
29																						
30																						
31																						
32																						
33																						
34																						
35																						
36																						
37																						
38																						
39																						
40																						
41																						
42																						
43																						
44																						
45																						

	A	B	C	D	E	F	G	H	I	J	K	L	M	N	O	P	Q	R	S	T	U	V
1																						
2																						
3																						
4																						
5																						
6																						
7																						
8																						
9																						
10																						
11																						
12																						
13																						
14																						
15																						
16																						
17																						
18																						
19																						
20																						
21																						
22																						
23																						
24																						
25																						
26																						
27																						
28																						
29																						
30																						
31																						
32																						
33																						
34																						
35																						
36																						
37																						
38																						
39																						
40																						
41																						
42																						
43																						
44																						
45																						

Import Options

Select the Locale to Use for Import

Automatic

Custom: Spanish (Nicaragua)

Options

Detect special numbers (such as dates)

Detect numbers with scientific notation

Keep asking during this session

Cancel OK

	A	B	C	D	E	F	G	H	I	J	K	L
1	wkt_geom	Name	Role	Region	Active	Active_int						
2	NULL	SeqLaz Test	Field Director		2true	1						
3												
4												
5												
6												
7												
8												
9												
10												
11												
12												
13												
14												
15												
16												
17												
18												
19												
20												
21												
22												
23												
24												
25												



QGIS version	3.36.2-Maidenhead	QGIS code revision	6d250527200
Qt version	5.15.1		
Python version	3.12.3		
GDAL/OGR version	3.8.4		
PROJ version	9.4.0		
EPSG Registry database version	v11.004 (2024-02-24)		
GEOS version	3.12.1-CAPI-1.18.1		
SQLite version	3.45.1		
PostgreSQL client version	16.2 (Ubuntu 16.2-1ubuntu4)		
Spatialite version	5.1.0		
QWT version	6.1.4		
QScintilla2 version	2.14.1		
OS version	Ubuntu 24.04 LTS		

Active Python plugins	
pg_raster_import	3.2.0
webmap_utilities	0.1
qgis-maptiler-plugin	3.3
processing_saga_nextgen	1.0.0
excel_sync	3.6
zoom_level	0.1
AppendFeaturesToLayer	2.0.0
qgisgbifapi	0.3.2
kart	1.0.14
OpenTopography-DEM-Downloader	2.0
ProjectPackager	0.7.2
ImportPhotos	3.0.6
plugin_reloader	0.9.4
quick_map_services	0.19.34

QGIS is licensed under the GNU General Public License
<https://www.gnu.org/licenses>

QGIS Home Page

Join our User Mailing List

Close



Layers

- Notes and Tabular Data
 - Fieldnotes [0]
 - Crew_data
 - Region
 - Employees [14]
- Offline Maps
- Online Maps
 - OpenStreetMap
 - Google Satellite_Scale4 (sharpened)



Browser Layers

Type to locate (Ctrl+K)



QField
3.2.2 - Congo ([72be17 v3.2.2](#))
Qt 6.6.2



OPENGIS.ch
Developed by
[OPENGIS.ch](#)

QField app directory
[/home/seqlaz/Documents/QField/](#)

♥ Support QField

📖 Documentation