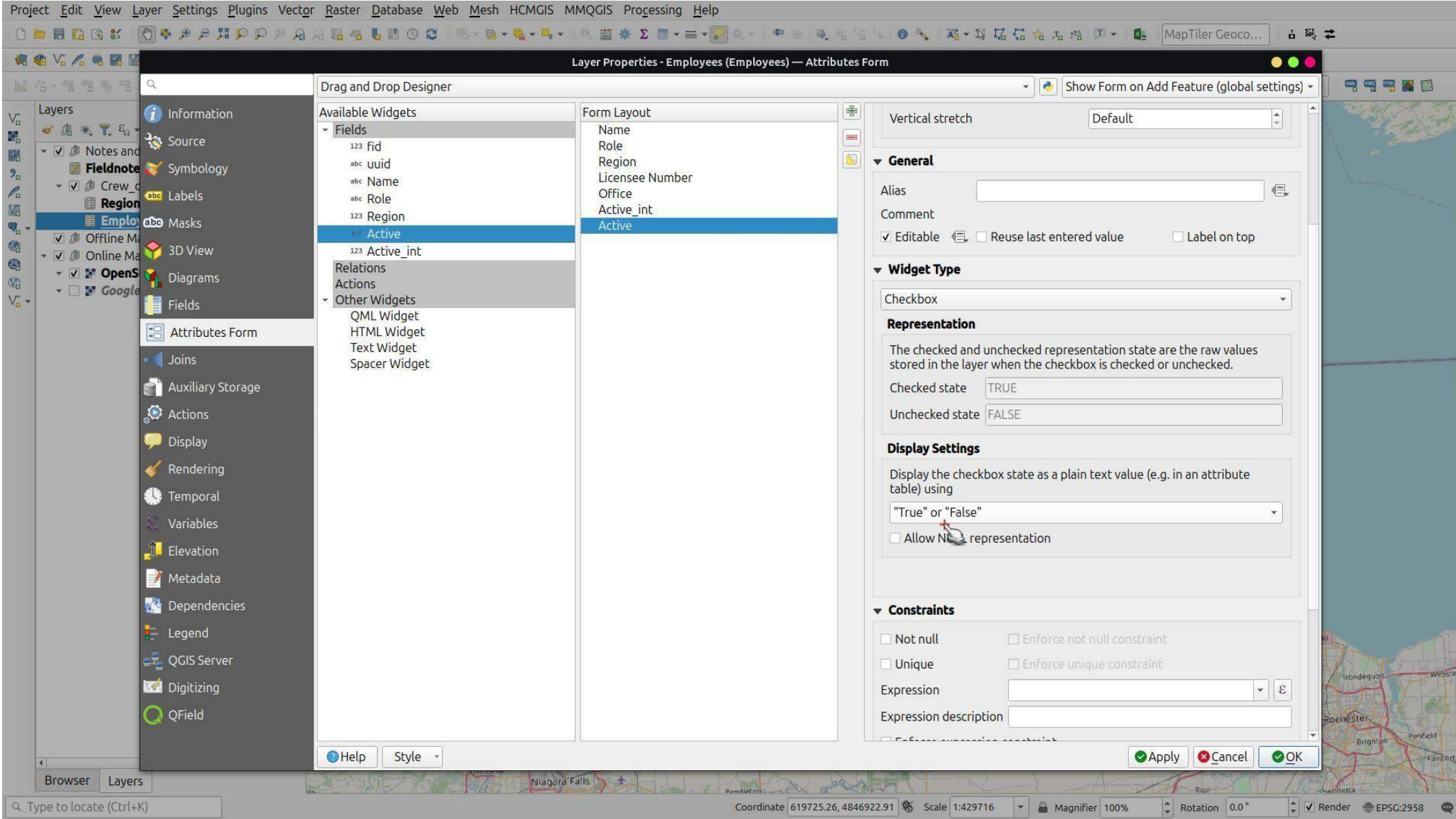


Layer Properties - Employees (Employees) — Fields

Id	Name	Alias	Type	Type name	Length	Precision	Comment	Configuration
123 0	fid		Integer (64 bit)	Integer64	0	0		
abc 1	uuid		Text (string)	String	0	0		
abc 2	Name		Text (string)	String	0	0		
abc 3	Role		Text (string)	String	0	0		
123 4	Region		Integer (32 bit)	Integer	0	0		
t/r 5	Active		Boolean	Boolean	0	0		
123 6	Active_		Integer (32 bit)	Integer	0	0		

- Information
- Source
- Symbology
- Labels
- Masks
- 3D View
- Diagrams
- Fields**
- Attributes Form
- Joins
- Auxiliary Storage
- Actions
- Display
- Rendering
- Temporal
- Variables
- Elevation
- Metadata
- Dependencies
- Legend
- QGIS Server
- Digitizing
- QField



Layer Properties - Employees (Employees) — Attributes Form

Drag and Drop Designer

Show Form on Add Feature (global settings)

Available Widgets

- Fields
 - 123 fid
 - abc uuid
 - abc Name
 - abc Role
 - 123 Region
 - 123 Active**
 - 123 Active_int
- Relations
- Actions
- Other Widgets
 - QML Widget
 - HTML Widget
 - Text Widget
 - Spacer Widget

Form Layout

- Name
- Role
- Region
- Licensee Number
- Office
- Active_int
- Active**

Vertical stretch Default

General

Alias

Comment

Editable Reuse last entered value Label on top

Widget Type

Checkbox

Representation

The checked and unchecked representation state are the raw values stored in the layer when the checkbox is checked or unchecked.

Checked state TRUE

Unchecked state FALSE

Display Settings

Display the checkbox state as a plain text value (e.g. in an attribute table) using

"True" or "False"

Allow NULL representation

Constraints

Not null Enforce not null constraint

Unique Enforce unique constraint

Expression

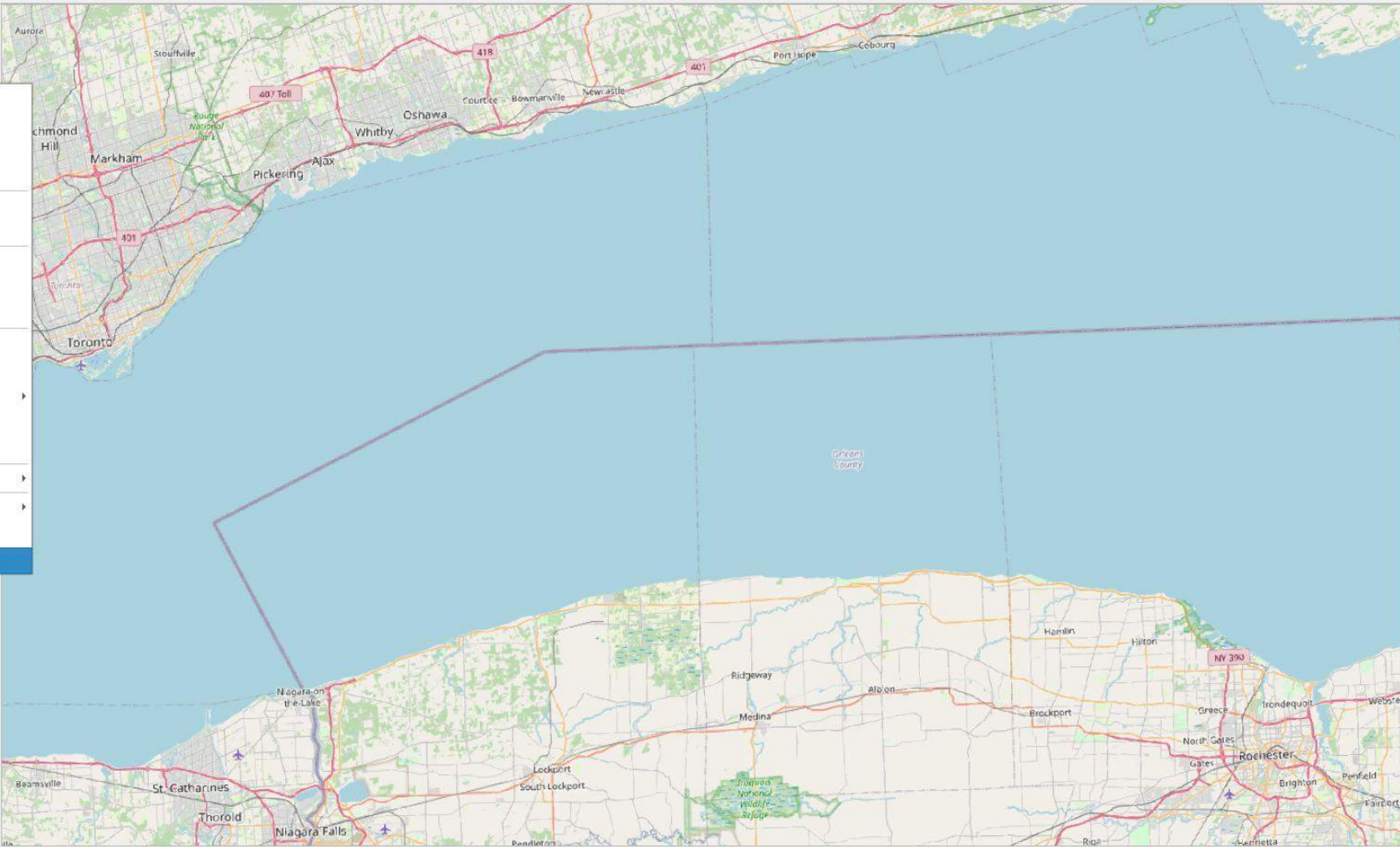
Expression description

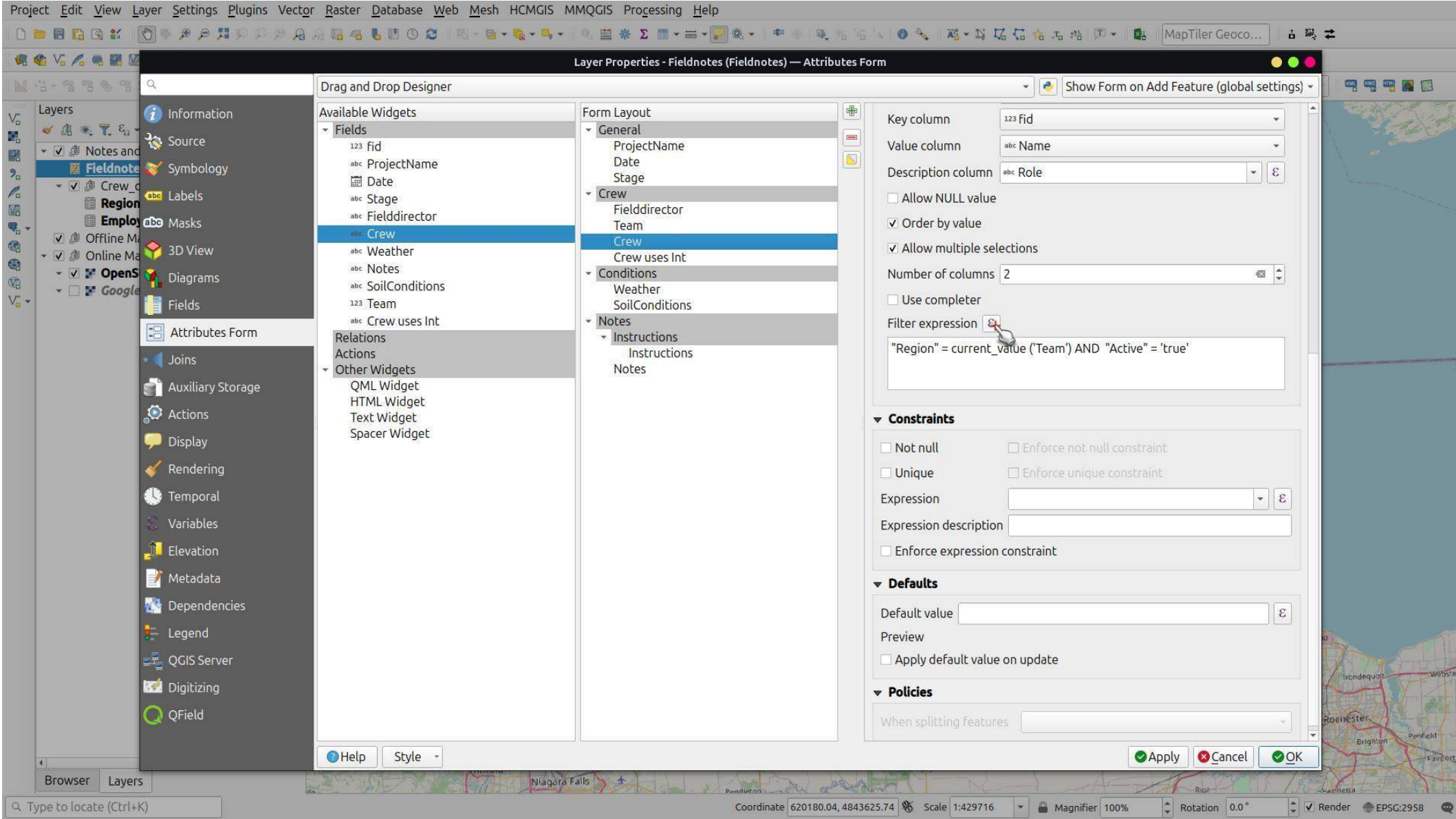
Apply Cancel OK



- Layers
- Notes and Tabular Data
 - Field...
 - Cre...
 - Regi...
 - Emp...
 - Offline
 - Online
 - Ope...
 - Go...

- Show Feature Count
- Show Labels
- Copy Layer
- Rename Layer
- Duplicate Layer
- Remove Layer...
- Move Out of Group
- Move to Bottom
- Check and All its Parents
- Open Attribute Table
- Toggle Editing
- Current Edits
- Filter...
- Change Data Source...
- Export
- Styles
- Add Layer Notes...
- Properties...





Layer Properties - Fieldnotes (Fieldnotes) — Attributes Form

Drag and Drop Designer

Show Form on Add Feature (global settings)

- Available Widgets
 - Fields
 - 123 fid
 - abc ProjectName
 - abc Date
 - abc Stage
 - abc Fielddirector
 - abc Crew
 - abc Weather
 - abc Notes
 - abc SoilConditions
 - 123 Team
 - abc Crew uses Int
 - Relations
 - Actions
 - Other Widgets
 - QML Widget
 - HTML Widget
 - Text Widget
 - Spacer Widget

- Form Layout
 - General
 - ProjectName
 - Date
 - Stage
 - Crew
 - Fielddirector
 - Team
 - Crew
 - Crew uses Int
 - Conditions
 - Weather
 - SoilConditions
 - Notes
 - Instructions
 - Notes

Key column: 123 fid

Value column: abc Name

Description column: abc Role

Allow NULL value

Order by value

Allow multiple selections

Number of columns: 2

Use completer

Filter expression: "Region" = current_value ("Team") AND "Active" = 'true'

Constraints

Not null

Enforce not null constraint

Unique

Enforce unique constraint

Expression: []

Expression description: []

Enforce expression constraint

Defaults

Default value: []

Preview

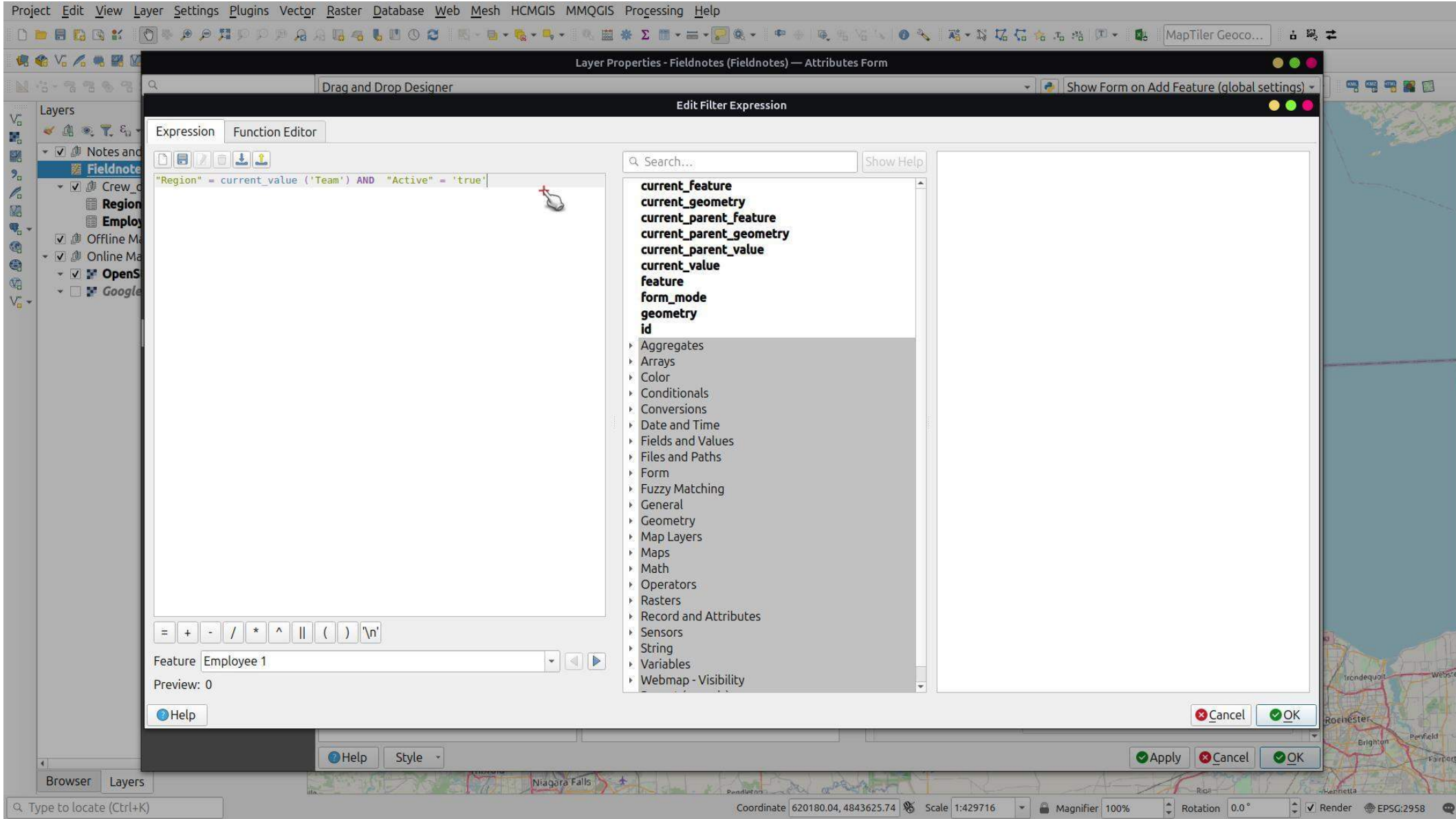
Apply default value on update

Policies

When splitting features: []

Help Style

Apply Cancel OK



Edit Filter Expression

Expression Function Editor

"Region" = current_value ('Team') AND "Active" = 'true'

Search...

Show Help

- current_feature
- current_geometry
- current_parent_feature
- current_parent_geometry
- current_parent_value
- current_value
- feature
- form_mode
- geometry
- id
- ▶ Aggregates
- ▶ Arrays
- ▶ Color
- ▶ Conditionals
- ▶ Conversions
- ▶ Date and Time
- ▶ Fields and Values
- ▶ Files and Paths
- ▶ Form
- ▶ Fuzzy Matching
- ▶ General
- ▶ Geometry
- ▶ Map Layers
- ▶ Maps
- ▶ Math
- ▶ Operators
- ▶ Rasters
- ▶ Record and Attributes
- ▶ Sensors
- ▶ String
- ▶ Variables
- ▶ Webmap - Visibility

= + - / * ^ || () '\n'

Feature Employee 1

Preview: 0

Help

Cancel

OK

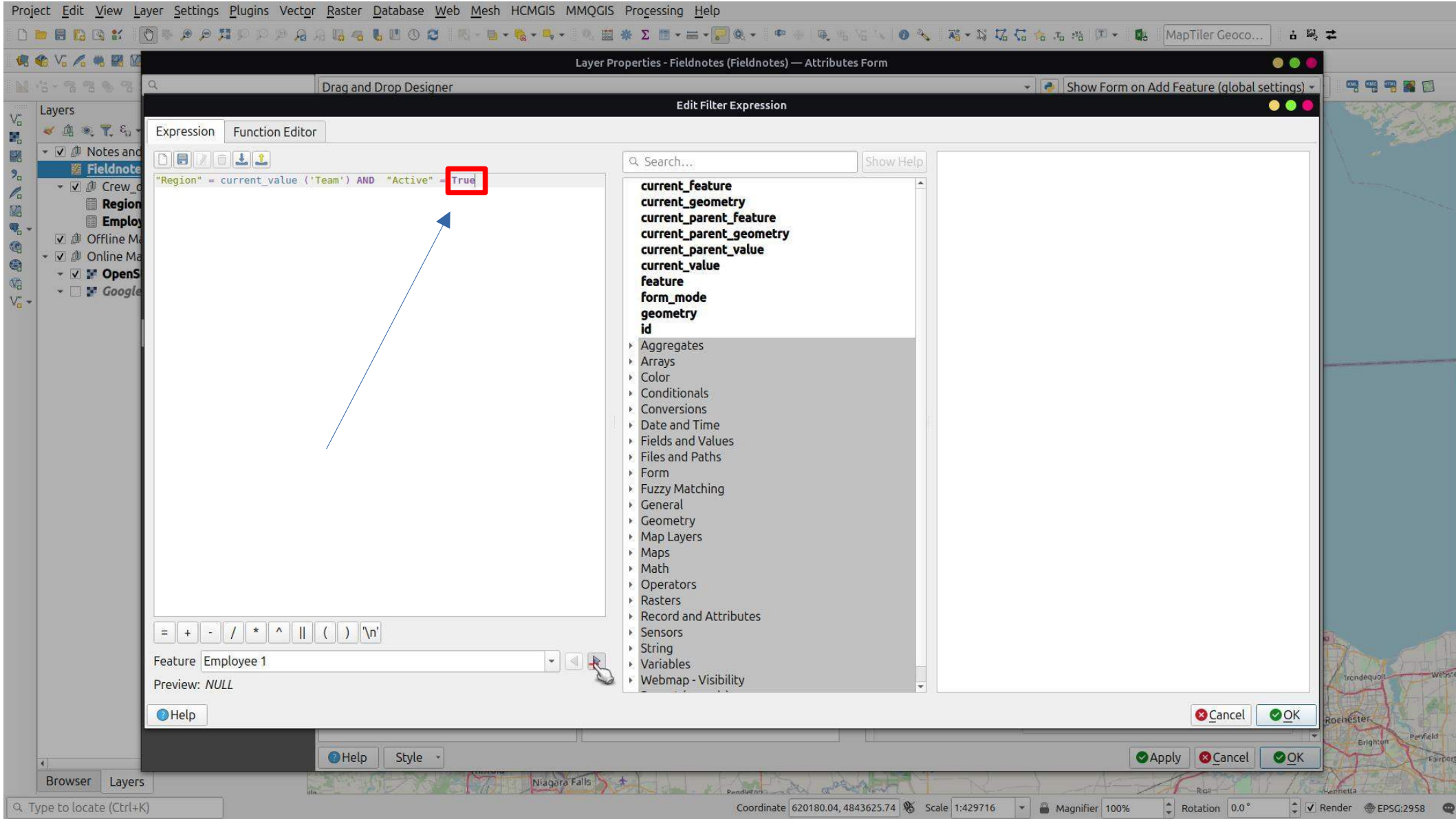
Help

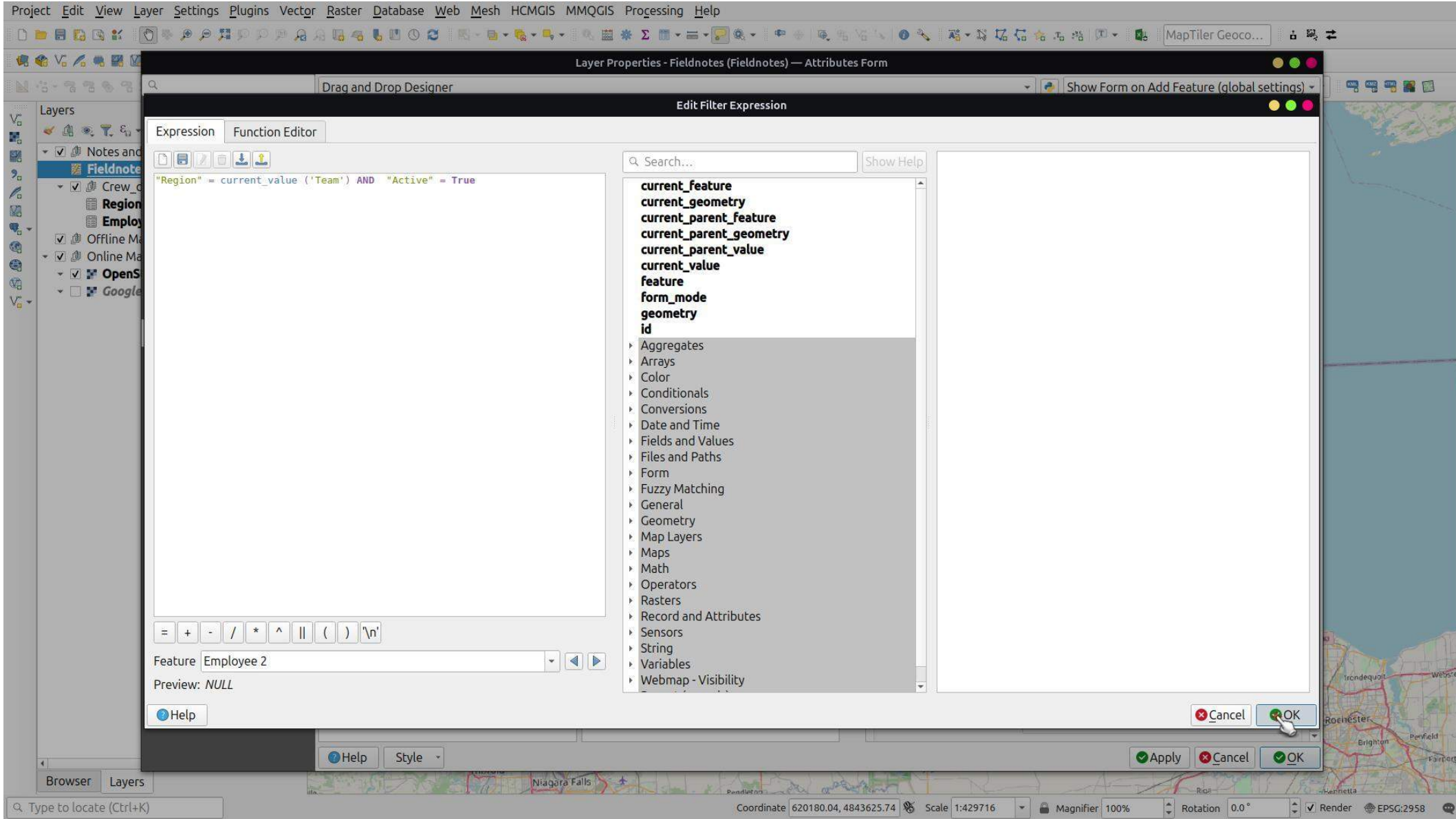
Style

Apply

Cancel

OK





Edit Filter Expression

Expression Function Editor

```
"Region" = current_value ('Team') AND "Active" = True
```

Search... Show Help

- current_feature
- current_geometry
- current_parent_feature
- current_parent_geometry
- current_parent_value
- current_value
- feature
- form_mode
- geometry
- id
- ▶ Aggregates
- ▶ Arrays
- ▶ Color
- ▶ Conditionals
- ▶ Conversions
- ▶ Date and Time
- ▶ Fields and Values
- ▶ Files and Paths
- ▶ Form
- ▶ Fuzzy Matching
- ▶ General
- ▶ Geometry
- ▶ Map Layers
- ▶ Maps
- ▶ Math
- ▶ Operators
- ▶ Rasters
- ▶ Record and Attributes
- ▶ Sensors
- ▶ String
- ▶ Variables
- ▶ Webmap - Visibility

= + - / * ^ || () '\n'

Feature Employee 2

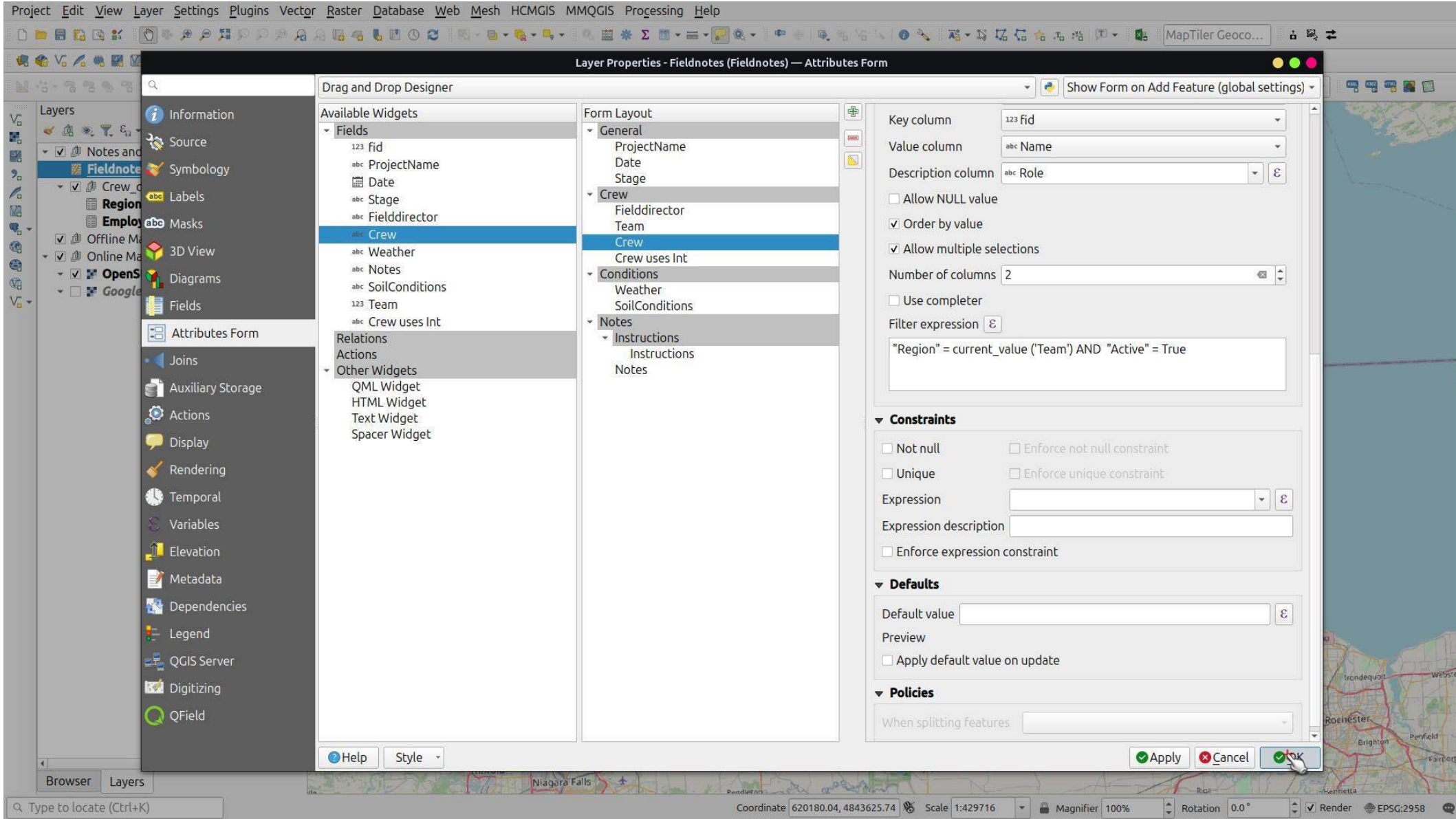
Preview: NULL

Help

Cancel OK

Help Style

Apply Cancel OK



Layer Properties - Fieldnotes (Fieldnotes) — Attributes Form

Show Form on Add Feature (global settings)

Drag and Drop Designer

Available Widgets

- Fields
 - 123 fid
 - abc ProjectName
 - abc Date
 - abc Stage
 - abc Fielddirector
 - abc Crew
 - abc Weather
 - abc Notes
 - abc SoilConditions
 - 123 Team
 - abc Crew uses Int
- Relations
- Actions
- Other Widgets
 - QML Widget
 - HTML Widget
 - Text Widget
 - Spacer Widget

Form Layout

- General
 - ProjectName
 - Date
 - Stage
- Crew
 - Fielddirector
 - Team
 - Crew
 - Crew uses Int
- Conditions
 - Weather
 - SoilConditions
- Notes
 - Instructions
 - Instructions
 - Notes

Key column: 123 fid

Value column: abc Name

Description column: abc Role

Allow NULL value

Order by value

Allow multiple selections

Number of columns: 2

Use completer

Filter expression: "Region" = current_value ("Team") AND "Active" = True

Constraints

Not null Enforce not null constraint

Unique Enforce unique constraint

Expression: []

Expression description: []

Enforce expression constraint

Defaults

Default value: []

Preview

Apply default value on update

Policies

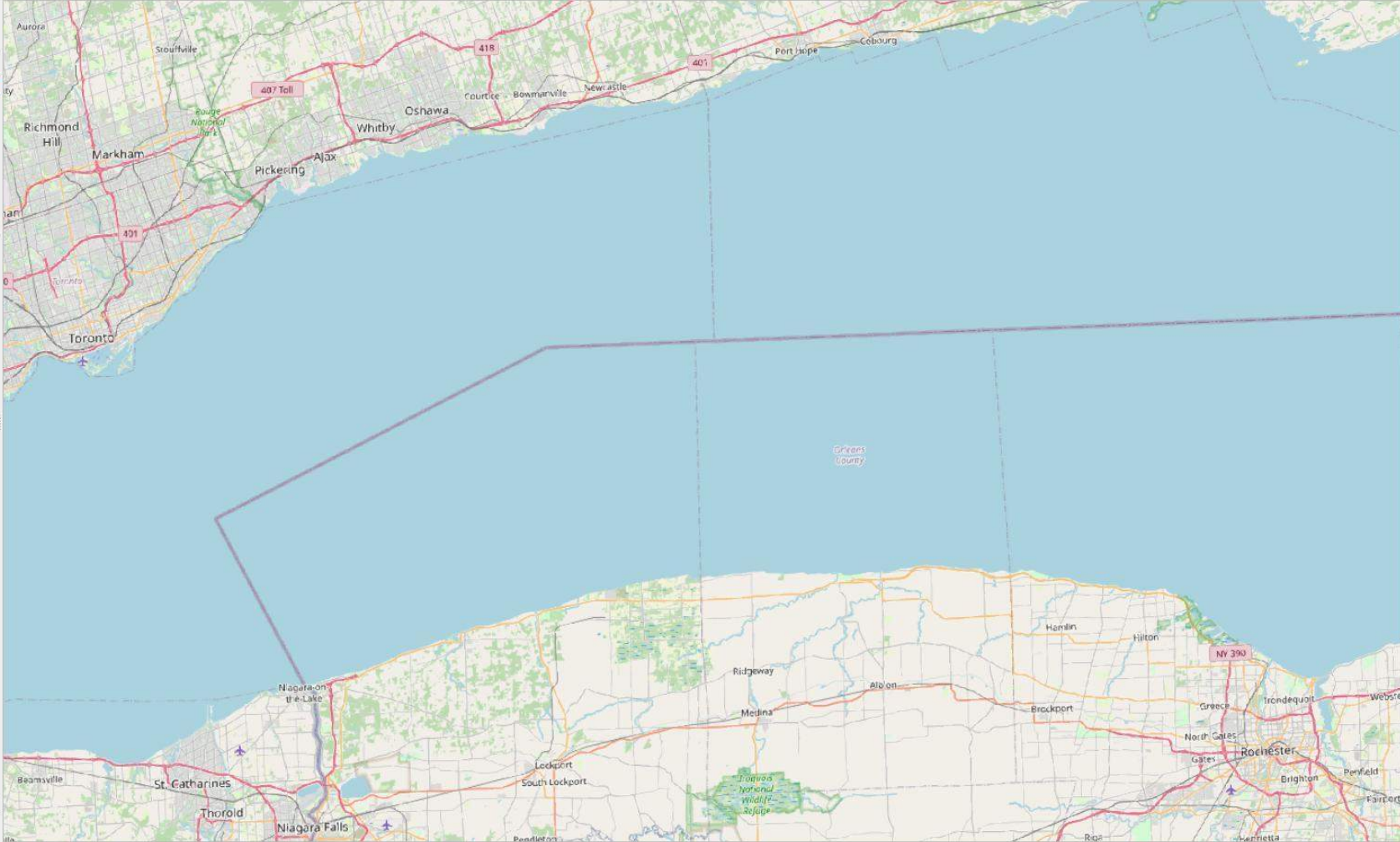
When splitting features: []

Help Style

Apply Cancel OK



- Layers
- Notes and Tabular Data
 - Fieldnotes [0]
 - Crew_data
 - Region
 - Employees [14]
 - Offline Maps
 - Online Maps
 - OpenStreetMap
 - Google Satellite_Scale4 (sharpened)



Type to locate (Ctrl+K)



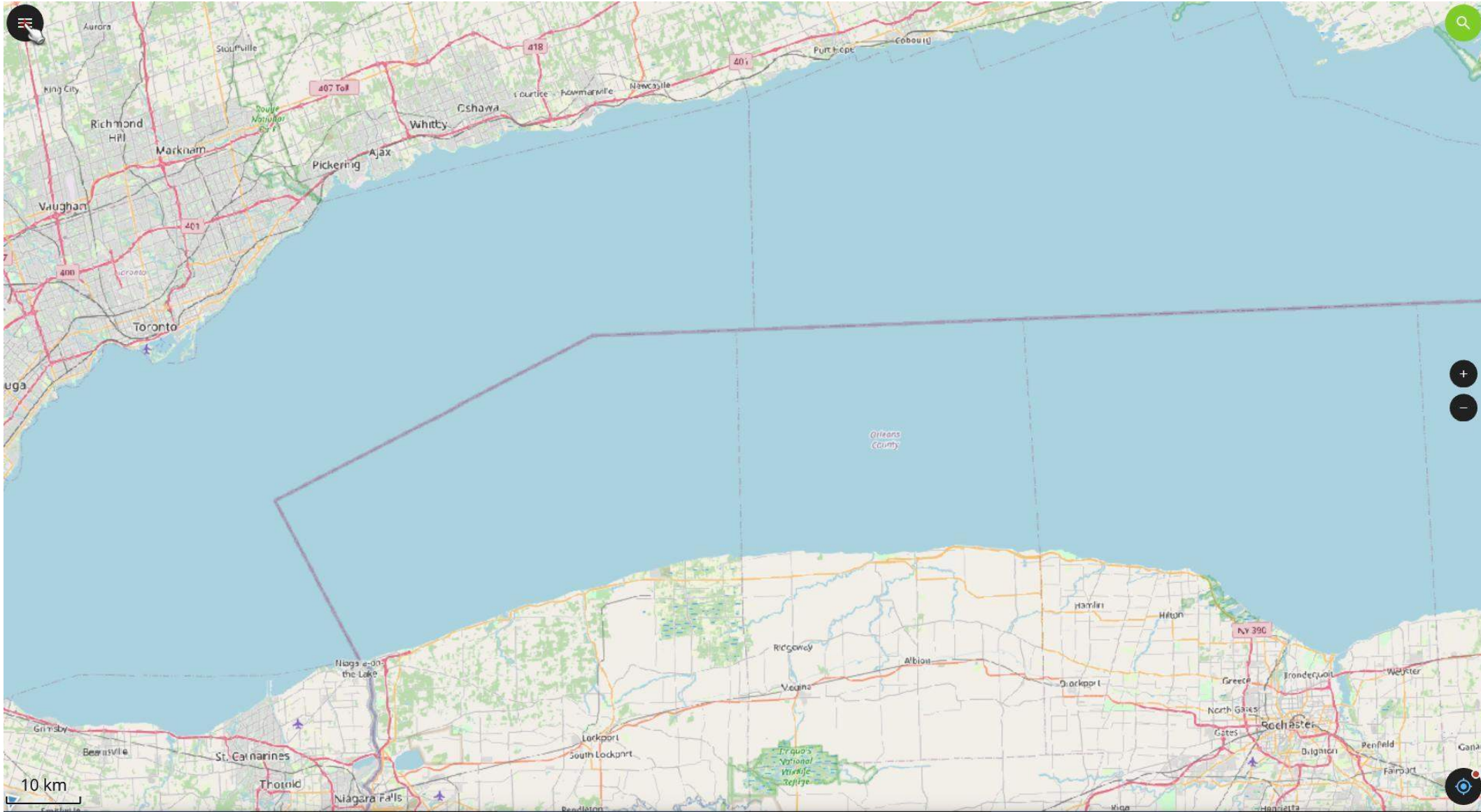
Welcome back to QField.

QFieldCloud projects

Open local file

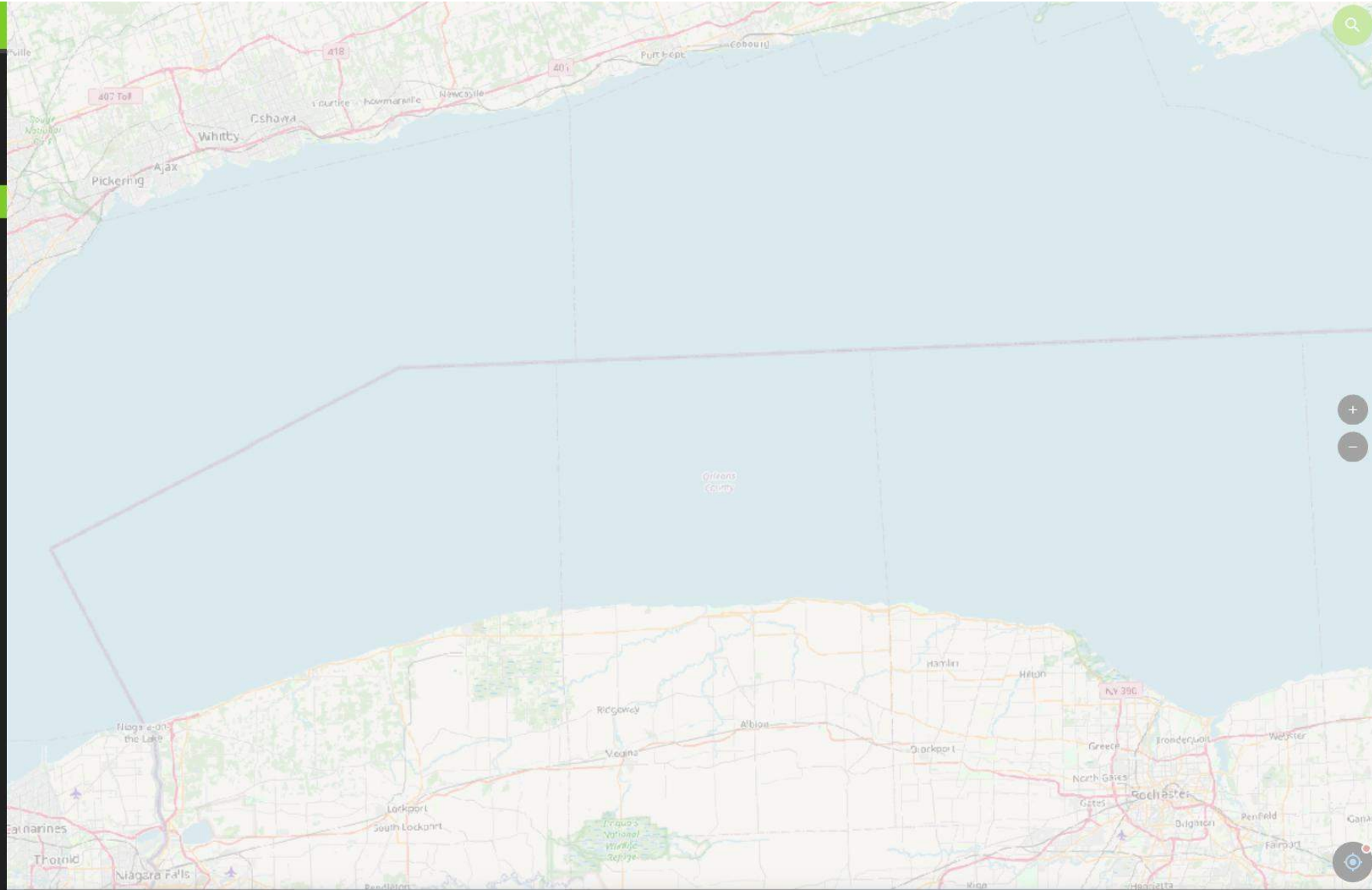
Recent Projects

Template
Last session



Navigation icons: back, settings, cloud, home, edit.

- Notes and Tabular Data
 - Fieldnotes [0]
 - Crew_data
 - Region
 - Employees [14]
- Offline Maps
- Online Maps
 - OpenStreetMap
 - Google Satellite_Scale...



Notes and Tabular Data

Fieldnotes [0]

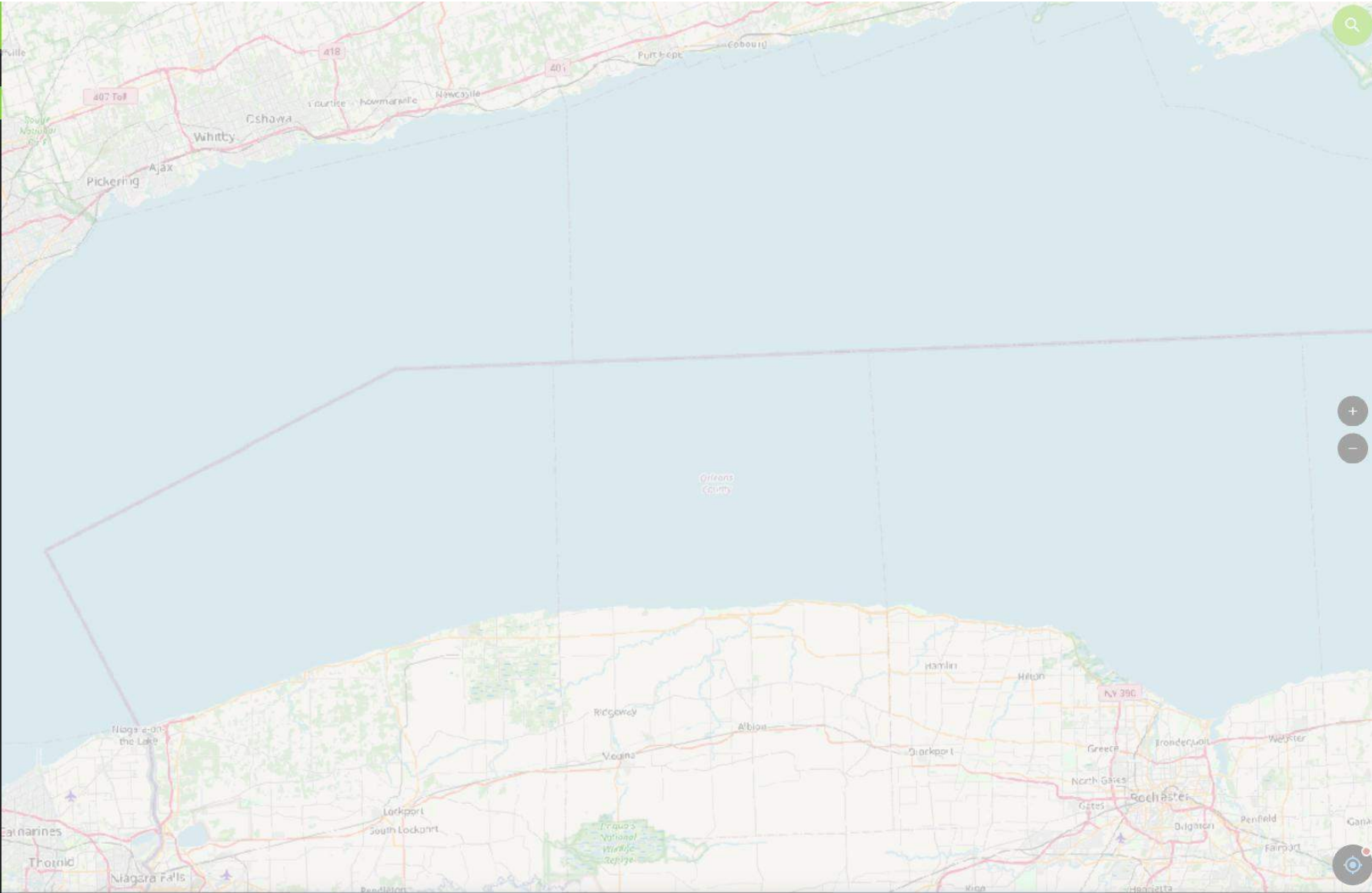
Crew_data

- Region
- Employees [14]

Offline Maps

Online Maps

- OpenStreetMap
- Google Satellite_Scale...



Notes and Tabular Data

Fieldnotes [0]

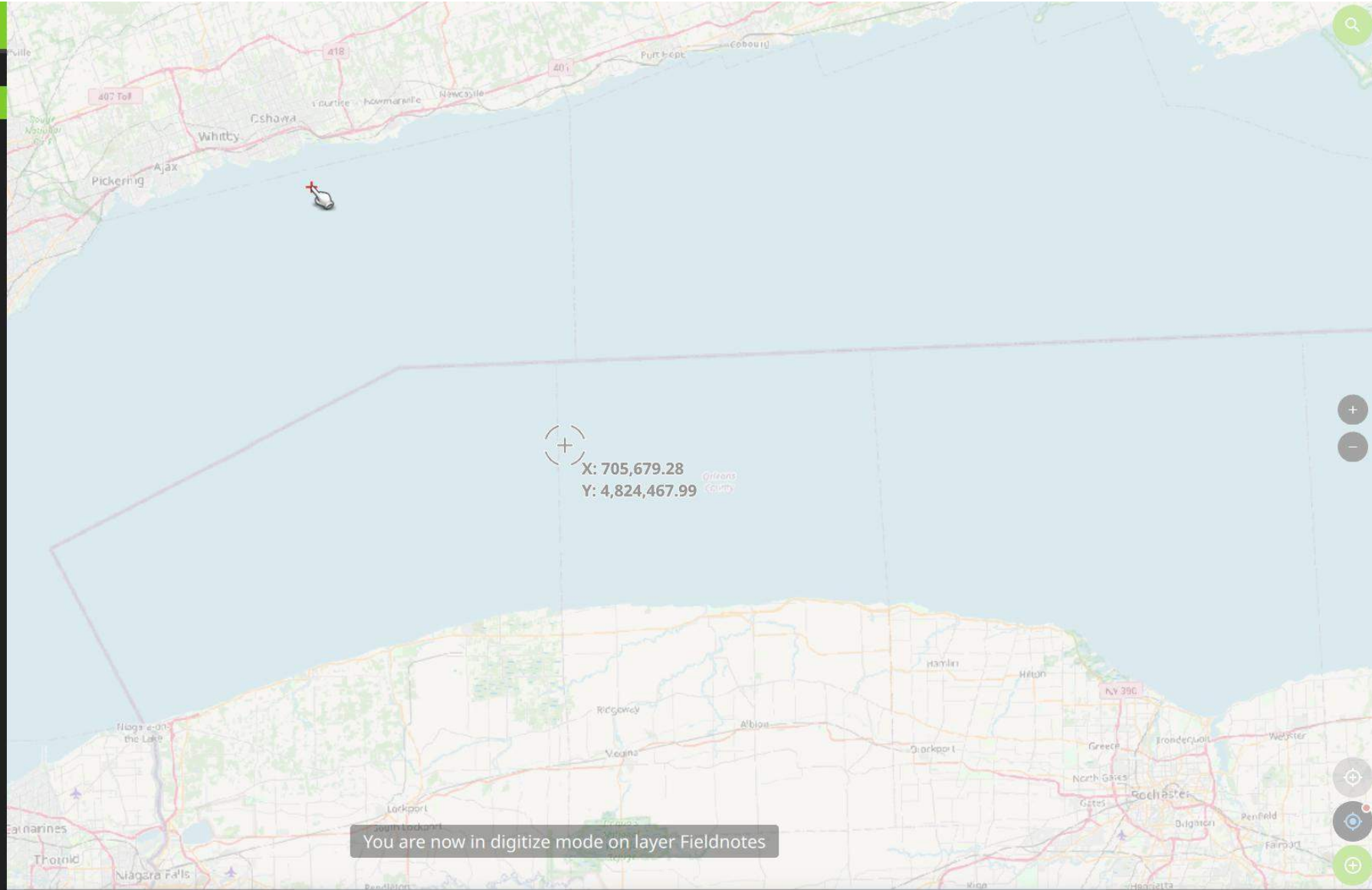
Crew_data

- Region
- Employees [14]

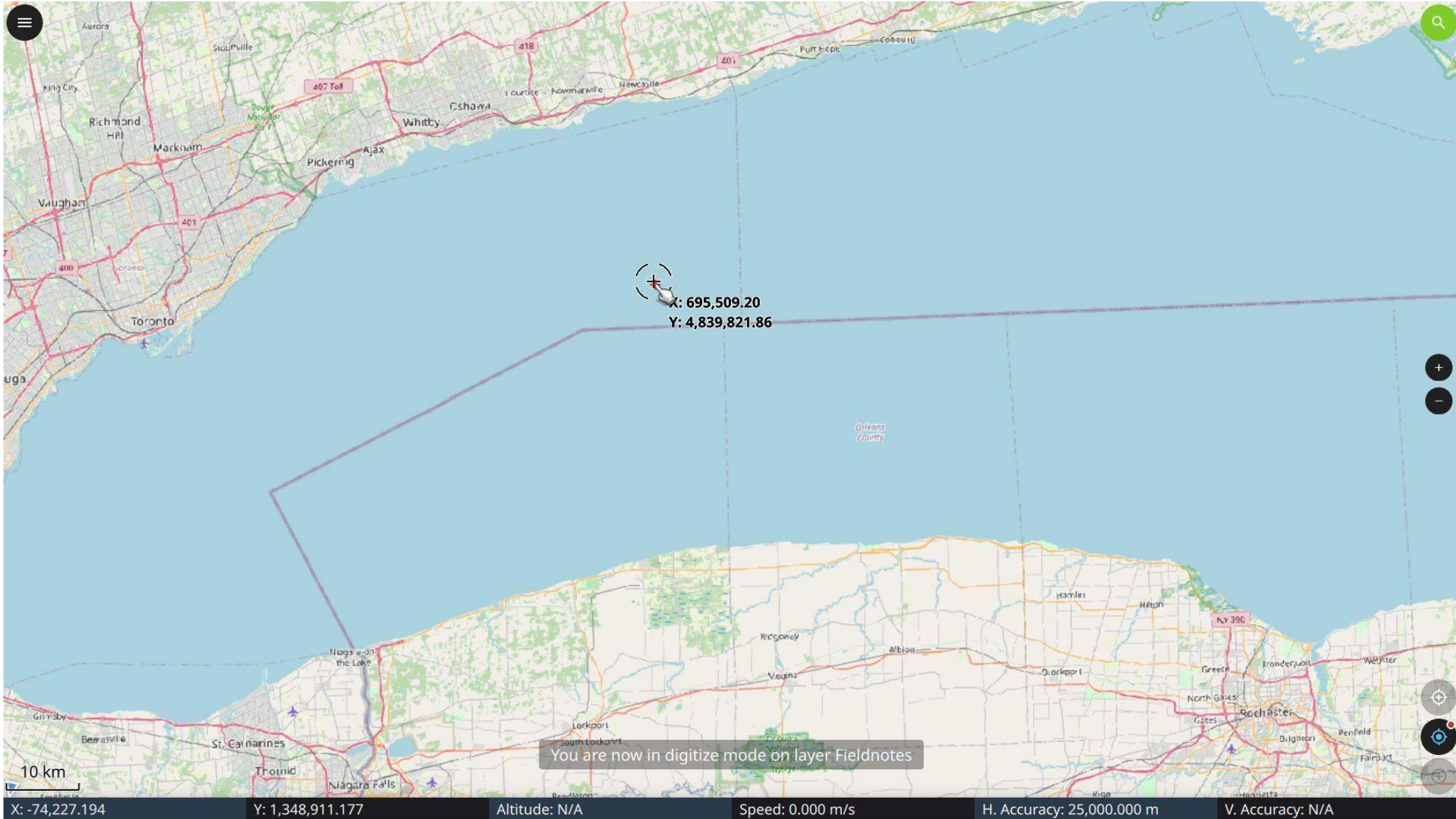
Offline Maps

Online Maps

- OpenStreetMap
- Google Satellite_Scale...





You are now in digitize mode on layer Fieldnotes








X: 695,509.20
Y: 4,839,821.86

You are now in digitize mode on layer Fieldnotes

General • Crew • Conditions • Notes

ProjectName
Test003  

Date
2024-04-27   

Stage
1-2  



General Crew • Conditions Notes

Fielddirector

Fielddirector 1

Team

Region A

Region B

Combo box with integer field



General Crew • Conditions Notes

Fielddirector

Fielddirector 1

Team

Region B

Combo box with boolean field

- Employee 12
- Employee 7
- Employee 8
- Employee 9

Combo box with integer field

- Employee 12
- Employee 7
- Employee 8
- Employee 9



Fielddirector

Fielddirector 1

Team

Region B

Combo box with boolean field

- Employee 12
- Employee 7
- Employee 8
- Employee 9

Combo box with integer field

- Employee 12
- Employee 7
- Employee 8
- Employee 9



General Crew • Conditions Notes

Fielddirector

Fielddirector 1

Team

Region B

Combo box with boolean field

- Employee 12
- Employee 7
- Employee 8
- Employee 9

Combo box with integer field

- Employee 12
- Employee 7
- Employee 8
- Employee 9

Instructions**Instructions**

Record for a Stage 1-2:

- a property description
- field methods used
- if work is completed
- if artefacts were found

Record for Stage 3/4:

- work conducted
- if features were encountered

Always:

- visitor and client interactions
(names if possible)
- health and safety concerns
- FN interactions (input, concerns)

Notes

Some Notes of stage|



Weather

Storm  

SoilConditions

Dry   

Weather

Stormy ⋮

SoilConditions

Dry ⋮



General Crew Conditions Notes

Fielddirector

Fielddirector 1

Team

Region B

Combo box with boolean field

- Employee 12
- Employee 7
- Employee 8
- Employee 9

Combo box with integer field

- Employee 12
- Employee 7
- Employee 8
- Employee 9

Fielddirector

Fielddirector 1

Team

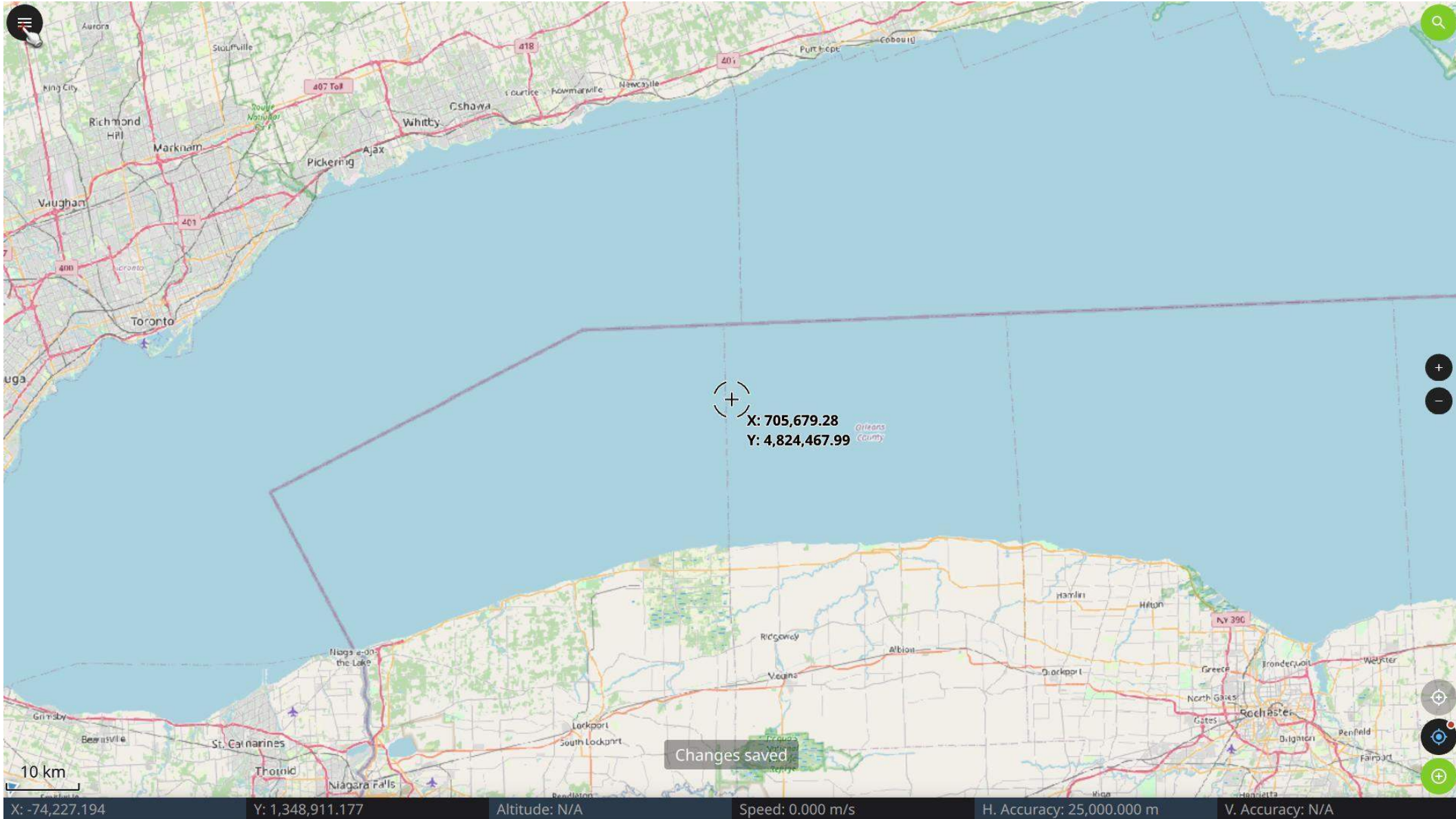
Region B

Combo box with boolean field

- Employee 12
- Employee 7
- Employee 8
- Employee 9

Combo box with integer field

- Employee 12
- Employee 7
- Employee 8
- Employee 9



X: 705,679.28
Y: 4,824,467.99

Orleans County

Changes saved

Notes and Tabular Data

Fieldnotes [1]

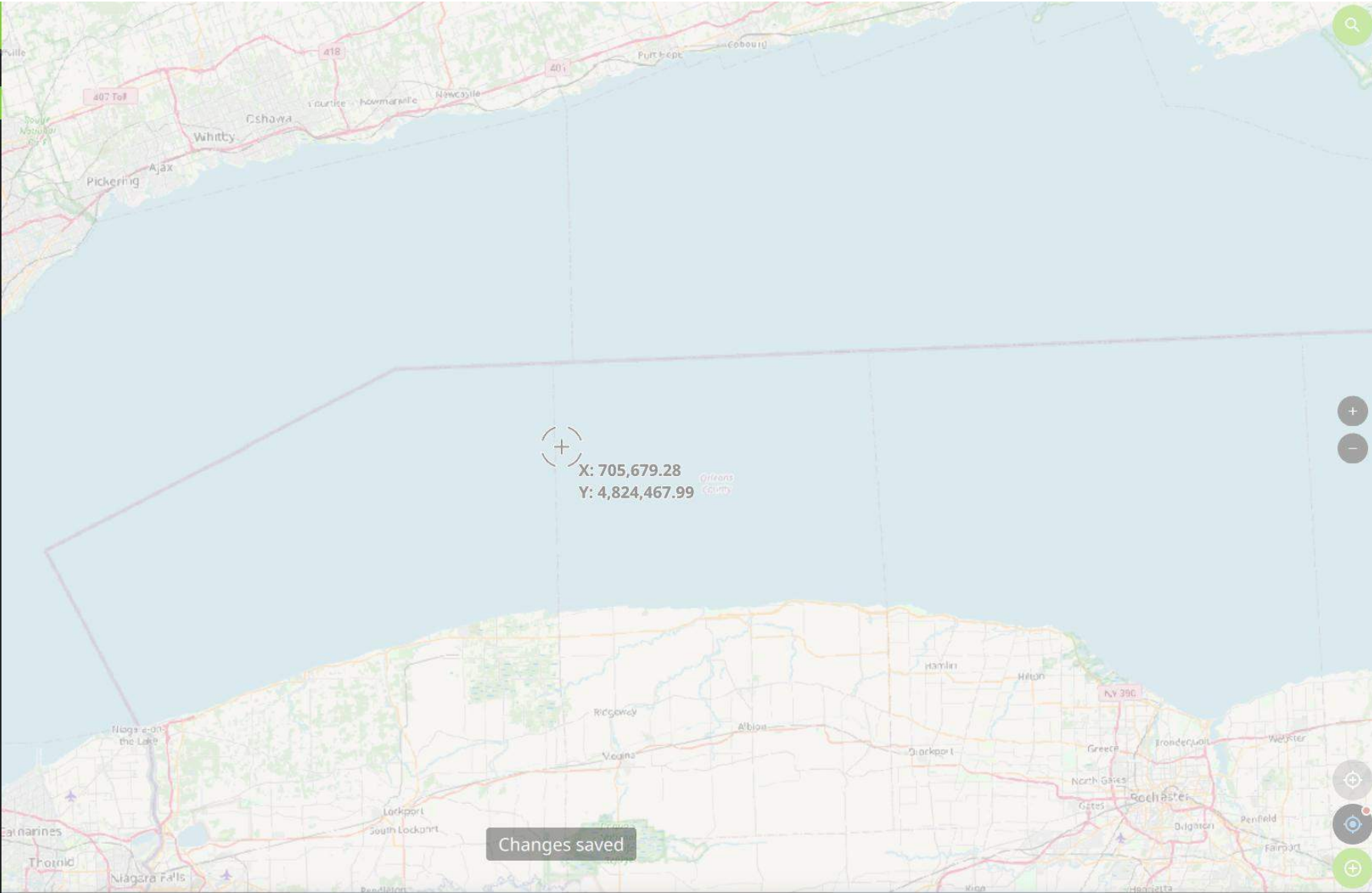
Crew_data

- Region
- Employees [14]

Offline Maps

Online Maps

- OpenStreetMap
- Google Satellite_Scale...



Changes saved