
Optuna Documentation

Release 1.4.0

Optuna Contributors.

Jun 29, 2020

CONTENTS:

1	Key Features	3
2	Basic Concepts	5
3	Communication	7
4	Contribution	9
5	License	11
6	Reference	13
6.1	Installation	13
6.2	Tutorial	13
6.3	API Reference	26
6.4	FAQ	85
7	Indices and tables	91
	Python Module Index	93
	Index	95



OPTUNA

Optuna is an automatic hyperparameter optimization software framework, particularly designed for machine learning. It features an imperative, *define-by-run* style user API. Thanks to our *define-by-run* API, the code written with Optuna enjoys high modularity, and the user of Optuna can dynamically construct the search spaces for the hyperparameters.

KEY FEATURES

Optuna has modern functionalities as follows:

- Parallel distributed optimization
- Pruning of unpromising trials
- Lightweight, versatile, and platform agnostic architecture

BASIC CONCEPTS

We use the terms *study* and *trial* as follows:

- Study: optimization based on an objective function
- Trial: a single execution of the objective function

Please refer to sample code below. The goal of a *study* is to find out the optimal set of hyperparameter values (e.g., classifier and `svm_c`) through multiple *trials* (e.g., `n_trials=100`). Optuna is a framework designed for the automation and the acceleration of the optimization *studies*.

```
import ...

# Define an objective function to be minimized.
def objective(trial):

    # Invoke suggest methods of a Trial object to generate hyperparameters.
    regressor_name = trial.suggest_categorical('classifier', ['SVR', 'RandomForest'])
    if regressor_name == 'SVR':
        svr_c = trial.suggest_loguniform('svr_c', 1e-10, 1e10)
        regressor_obj = sklearn.svm.SVR(C=svr_c)
    else:
        rf_max_depth = trial.suggest_int('rf_max_depth', 2, 32)
        regressor_obj = sklearn.ensemble.RandomForestRegressor(max_depth=rf_max_depth)

    X, y = sklearn.datasets.load_boston(return_X_y=True)
    X_train, X_val, y_train, y_val = sklearn.model_selection.train_test_split(X, y,
↪random_state=0)

    regressor_obj.fit(X_train, y_train)
    y_pred = regressor_obj.predict(X_val)

    error = sklearn.metrics.mean_squared_error(y_val, y_pred)

    return error # An objective value linked with the Trial object.

study = optuna.create_study() # Create a new study.
study.optimize(objective, n_trials=100) # Invoke optimization of the objective_
↪function.
```


COMMUNICATION

- [GitHub Issues](#) for bug reports, feature requests and questions.
- [Gitter](#) for interactive chat with developers.
- [Stack Overflow](#) for questions.

CONTRIBUTION

Any contributions to Optuna are welcome! When you send a pull request, please follow the [contribution guide](#).

CHAPTER
FIVE

LICENSE

MIT License (see [LICENSE](#)).

REFERENCE

Takuya Akiba, Shotaro Sano, Toshihiko Yanase, Takeru Ohta, and Masanori Koyama. 2019. Optuna: A Next-generation Hyperparameter Optimization Framework. In KDD ([arXiv](#)).

6.1 Installation

Optuna supports Python 3.5 or newer.

We recommend to install Optuna via pip:

```
$ pip install optuna
```

You can also install the development version of Optuna from master branch of Git repository:

```
$ pip install git+https://github.com/optuna/optuna.git
```

You can also install Optuna via conda:

```
$ conda install -c conda-forge optuna
```

6.2 Tutorial

6.2.1 First Optimization

Quadratic Function Example

Usually, Optuna is used to optimize hyper-parameters, but as an example, let us directly optimize a quadratic function in an IPython shell.

```
import optuna
```

The objective function is what will be optimized.

```
def objective(trial):  
    x = trial.suggest_uniform('x', -10, 10)  
    return (x - 2) ** 2
```

This function returns the value of $(x - 2)^2$. Our goal is to find the value of x that minimizes the output of the objective function. This is the “optimization.” During the optimization, Optuna repeatedly calls and evaluates the objective function with different values of x .

A *Trial* object corresponds to a single execution of the objective function and is internally instantiated upon each invocation of the function.

The *suggest* APIs (for example, `suggest_uniform()`) are called inside the objective function to obtain parameters for a trial. `suggest_uniform()` selects parameters uniformly within the range provided. In our example, from -10 to 10.

To start the optimization, we create a study object and pass the objective function to method `optimize()` as follows.

```
study = optuna.create_study()
study.optimize(objective, n_trials=100)
```

Out:

```
[I 2020-04-08 10:42:09,028] Finished trial#0 with value: 25.77382032395108 with_
↳parameters: {'x': 7.076792326257898}. Best is trial#0 with value: 25.77382032395108.
[I 2020-04-08 10:42:09,064] Finished trial#1 with value: 1.5189812248635903 with_
↳parameters: {'x': 0.7675304365366298}. Best is trial#1 with value: 1.
↳5189812248635903.
[I 2020-04-08 10:42:09,106] Finished trial#2 with value: 34.4074691838153 with_
↳parameters: {'x': -3.865788027521562}. Best is trial#1 with value: 1.
↳5189812248635903.
[I 2020-04-08 10:42:09,145] Finished trial#3 with value: 3.3601305753722657 with_
↳parameters: {'x': 3.8330658949891205}. Best is trial#1 with value: 1.
↳5189812248635903.
[I 2020-04-08 10:42:09,185] Finished trial#4 with value: 61.16797535698886 with_
↳parameters: {'x': -5.820995803412048}. Best is trial#1 with value: 1.
↳5189812248635903.
[I 2020-04-08 10:42:09,228] Finished trial#5 with value: 90.08665552769618 with_
↳parameters: {'x': -7.491399028999686}. Best is trial#1 with value: 1.
↳5189812248635903.
[I 2020-04-08 10:42:09,274] Finished trial#6 with value: 25.254236332163032 with_
↳parameters: {'x': 7.025359323686519}. Best is trial#1 with value: 1.
↳5189812248635903.
...
[I 2020-04-08 10:42:14,237] Finished trial#99 with value: 0.5227007740782738 with_
↳parameters: {'x': 2.7229804797352926}. Best is trial#67 with value: 2.
↳916284393762304e-06.
```

You can get the best parameter as follows.

```
study.best_params
```

Out:

```
{'x': 2.001707713205946}
```

We can see that Optuna found the best *x* value 2.001707713205946, which is close to the optimal value of 2.

Note: When used to search for hyper-parameters in machine learning, usually the objective function would return the loss or accuracy of the model.

Study Object

Let us clarify the terminology in Optuna as follows:

- **Trial:** A single call of the objective function
- **Study:** An optimization session, which is a set of trials
- **Parameter:** A variable whose value is to be optimized, such as x in the above example

In Optuna, we use the study object to manage optimization. Method `create_study()` returns a study object. A study object has useful properties for analyzing the optimization outcome.

To get the best parameter:

```
study.best_params
```

Out:

```
{'x': 2.001707713205946}
```

To get the best value:

```
study.best_value
```

Out:

```
2.916284393762304e-06
```

To get the best trial:

```
study.best_trial
```

Out:

```
FrozenTrial(number=67, value=2.916284393762304e-06, datetime_start=datetime.
↳datetime(2020, 4, 8, 10, 42, 12, 595884), datetime_complete=datetime.datetime(2020,
↳4, 8, 10, 42, 12, 639969), params={'x': 2.001707713205946}, distributions={'x':
↳UniformDistribution(high=10, low=-10)}, user_attrs={}, system_attrs={},
↳intermediate_values={}, trial_id=67, state=TrialState.COMPLETE)
```

To get all trials:

```
study.trials
```

Out:

```
[FrozenTrial(number=0, value=25.77382032395108, datetime_start=datetime.datetime(2020,
↳4, 8, 10, 42, 8, 987277), datetime_complete=datetime.datetime(2020, 4, 8, 10, 42,
↳9, 27959), params={'x': 7.076792326257898}, distributions={'x':
↳UniformDistribution(high=10, low=-10)}, user_attrs={}, system_attrs={},
↳intermediate_values={}, trial_id=0, state=TrialState.COMPLETE),
...
user_attrs={}, system_attrs={}, intermediate_values={}, trial_id=99,
↳state=TrialState.COMPLETE)]
```

To get the number of trials:

```
len(study.trials)
```

Out:

```
100
```

By executing `optimize()` again, we can continue the optimization.

```
study.optimize(objective, n_trials=100)
```

To get the updated number of trials:

```
len(study.trials)
```

Out:

```
200
```

6.2.2 Advanced Configurations

Defining Parameter Spaces

Optuna supports five kinds of parameters.

```
def objective(trial):
    # Categorical parameter
    optimizer = trial.suggest_categorical('optimizer', ['MomentumSGD', 'Adam'])

    # Int parameter
    num_layers = trial.suggest_int('num_layers', 1, 3)

    # Uniform parameter
    dropout_rate = trial.suggest_uniform('dropout_rate', 0.0, 1.0)

    # Loguniform parameter
    learning_rate = trial.suggest_loguniform('learning_rate', 1e-5, 1e-2)

    # Discrete-uniform parameter
    drop_path_rate = trial.suggest_discrete_uniform('drop_path_rate', 0.0, 1.0, 0.1)

    ...
```

Branches and Loops

You can use branches or loops depending on the parameter values.

```
def objective(trial):
    classifier_name = trial.suggest_categorical('classifier', ['SVC', 'RandomForest'])
    if classifier_name == 'SVC':
        svc_c = trial.suggest_loguniform('svc_c', 1e-10, 1e10)
        classifier_obj = sklearn.svm.SVC(C=svc_c)
    else:
        rf_max_depth = int(trial.suggest_loguniform('rf_max_depth', 2, 32))
        classifier_obj = sklearn.ensemble.RandomForestClassifier(max_depth=rf_max_
↪depth)

    ...
```

```
def create_model(trial):
    n_layers = trial.suggest_int('n_layers', 1, 3)

    layers = []
    for i in range(n_layers):
        n_units = int(trial.suggest_loguniform('n_units_l{}'.format(i), 4, 128))
        layers.append(L.Linear(None, n_units))
        layers.append(F.relu)
    layers.append(L.Linear(None, 10))

    return chainer.Sequential(*layers)
```

Please also refer to [examples](#).

Note on the Number of Parameters

The difficulty of optimization increases roughly exponentially with regard to the number of parameters. That is, the number of necessary trials increases exponentially when you increase the number of parameters, so it is recommended to not add unimportant parameters.

Arguments for `Study.optimize`

The method `optimize()` (and `optuna study optimize` CLI command as well) has several useful options such as `timeout`. For details, please refer to the API reference for `optimize()`.

FYI: If you give neither `n_trials` nor `timeout` options, the optimization continues until it receives a termination signal such as `Ctrl+C` or `SIGTERM`. This is useful for use cases such as when it is hard to estimate the computational costs required to optimize your objective function.

6.2.3 Saving/Resuming Study with RDB Backend

An RDB backend enables persistent experiments (i.e., to save and resume a study) as well as access to history of studies. In addition, we can run multi-node optimization tasks with this feature, which is described in [Distributed Optimization](#).

In this section, let's try simple examples running on a local environment with SQLite DB.

Note: You can also utilize other RDB backends, e.g., PostgreSQL or MySQL, by setting the storage argument to the DB's URL. Please refer to [SQLAlchemy's document](#) for how to set up the URL.

New Study

We can create a persistent study by calling `create_study()` function as follows. An SQLite file `example.db` is automatically initialized with a new study record.

```
import optuna
study_name = 'example-study' # Unique identifier of the study.
study = optuna.create_study(study_name=study_name, storage='sqlite:///example.db')
```

To run a study, call `optimize()` method passing an objective function.

```
def objective(trial):
    x = trial.suggest_uniform('x', -10, 10)
    return (x - 2) ** 2

study.optimize(objective, n_trials=3)
```

Resume Study

To resume a study, instantiate a `Study` object passing the study name `example-study` and the DB URL `sqlite:///example.db`.

```
study = optuna.create_study(study_name='example-study', storage='sqlite:///example.db
↳', load_if_exists=True)
study.optimize(objective, n_trials=3)
```

Experimental History

We can access histories of studies and trials via the `Study` class. For example, we can get all trials of `example-study` as:

```
import optuna
study = optuna.create_study(study_name='example-study', storage='sqlite:///example.db
↳', load_if_exists=True)
df = study.trials_dataframe(attrs=('number', 'value', 'params', 'state'))
```

The method `trials_dataframe()` returns a pandas dataframe like:

```
print(df)
```

Out:

	number	value	params_x	state
0	0	25.301959	-3.030105	COMPLETE
1	1	1.406223	0.814157	COMPLETE
2	2	44.010366	-4.634031	COMPLETE
3	3	55.872181	9.474770	COMPLETE
4	4	113.039223	-8.631991	COMPLETE
5	5	57.319570	9.570969	COMPLETE

A `Study` object also provides properties such as `trials`, `best_value`, `best_params` (see also *First Optimization*).

```
study.best_params # Get best parameters for the objective function.
study.best_value  # Get best objective value.
study.best_trial  # Get best trial's information.
study.trials      # Get all trials' information.
```

6.2.4 Distributed Optimization

There is no complicated setup but just sharing the same study name among nodes/processes.

First, create a shared study using `optuna create-study` command (or using `optuna.create_study()` in a Python script).

```
$ optuna create-study --study-name "distributed-example" --storage "sqlite:///example.
↪db"
[I 2018-10-31 18:21:57,885] A new study created with name: distributed-example
```

Then, write an optimization script. Let's assume that `foo.py` contains the following code.

```
import optuna

def objective(trial):
    x = trial.suggest_uniform('x', -10, 10)
    return (x - 2) ** 2

if __name__ == '__main__':
    study = optuna.load_study(study_name='distributed-example', storage='sqlite:///
↪example.db')
    study.optimize(objective, n_trials=100)
```

Finally, run the shared study from multiple processes. For example, run `Process 1` in a terminal, and do `Process 2` in another one. They get parameter suggestions based on shared trials' history.

Process 1:

```
$ python foo.py
[I 2018-10-31 18:46:44,308] Finished a trial resulted in value: 1.1097007755908204.
↪Current best value is 0.00020881104123229936 with parameters: {'x': 2.
↪014450295541348}.
[I 2018-10-31 18:46:44,361] Finished a trial resulted in value: 0.5186699439824186.
↪Current best value is 0.00020881104123229936 with parameters: {'x': 2.
↪014450295541348}.
...
```

Process 2 (the same command as process 1):

```
$ python foo.py
[I 2018-10-31 18:47:02,912] Finished a trial resulted in value: 29.821448668796563.
↪Current best value is 0.00020881104123229936 with parameters: {'x': 2.
↪014450295541348}.
[I 2018-10-31 18:47:02,968] Finished a trial resulted in value: 0.7962498978463782.
↪Current best value is 0.00020881104123229936 with parameters: {'x': 2.
↪014450295541348}.
...
```

Note: We do not recommend SQLite for large scale distributed optimizations because it may cause serious performance issues. Please consider to use another database engine like PostgreSQL or MySQL.

Note: Please avoid putting the SQLite database on NFS when running distributed optimizations. See also: <https://www.sqlite.org/faq.html#q5>

6.2.5 Command-Line Interface

Command	Description
create-study	Create a new study.
delete-study	Delete a specified study.
dashboard	Launch web dashboard (beta).
storage upgrade	Upgrade the schema of a storage.
studies	Show a list of studies.
study optimize	Start optimization of a study.
study set-user-attr	Set a user attribute to a study.

Optuna provides command-line interface as shown in the above table.

Let us assume you are not in IPython shell and writing Python script files instead. It is totally fine to write scripts like the following:

```
import optuna

def objective(trial):
    x = trial.suggest_uniform('x', -10, 10)
    return (x - 2) ** 2

if __name__ == '__main__':
    study = optuna.create_study()
    study.optimize(objective, n_trials=100)
    print('Best value: {} (params: {})'.format(study.best_value, study.best_params))
```

However, we can reduce boilerplate codes by using our `optuna` command. Let us assume that `foo.py` contains only the following code.

```
def objective(trial):
    x = trial.suggest_uniform('x', -10, 10)
    return (x - 2) ** 2
```

Even so, we can invoke the optimization as follows. (Don't care about `--storage sqlite:///example.db` for now, which is described in [Saving/Resuming Study with RDB Backend](#).)

```
$ cat foo.py
def objective(trial):
    x = trial.suggest_uniform('x', -10, 10)
    return (x - 2) ** 2

$ STUDY_NAME=`optuna create-study --storage sqlite:///example.db`
$ optuna study optimize foo.py objective --n-trials=100 --storage sqlite:///example.
↪db --study $STUDY_NAME
[I 2018-05-09 10:40:25,196] Finished a trial resulted in value: 54.353767789264026.
↪Current best value is 54.353767789264026 with parameters: {'x': -5.372500782588228}.
[I 2018-05-09 10:40:25,197] Finished a trial resulted in value: 15.784266965526376.
↪Current best value is 15.784266965526376 with parameters: {'x': 5.972941852774387}.
...
[I 2018-05-09 10:40:26,204] Finished a trial resulted in value: 14.704254135013741.
↪Current best value is 2.280758099793617e-06 with parameters: {'x': 1.
↪9984897821018828}.
```


Please note that `foo.py` only contains the definition of the objective function. By giving the script file name and the method name of objective function to `optuna study optimize` command, we can invoke the optimization.

6.2.6 User Attributes

This feature is to annotate experiments with user-defined attributes.

Adding User Attributes to Studies

A `Study` object provides `set_user_attr()` method to register a pair of key and value as an user-defined attribute. A key is supposed to be a `str`, and a value be any object serializable with `json.dumps`.

```
import optuna
study = optuna.create_study(storage='sqlite:///example.db')
study.set_user_attr('contributors', ['Akiba', 'Sano'])
study.set_user_attr('dataset', 'MNIST')
```

We can access annotated attributes with `user_attr` property.

```
study.user_attrs # {'contributors': ['Akiba', 'Sano'], 'dataset': 'MNIST'}
```

`StudySummary` object, which can be retrieved by `get_all_study_summaries()`, also contains user-defined attributes.

```
study_summaries = optuna.get_all_study_summaries('sqlite:///example.db')
study_summaries[0].user_attrs # {'contributors': ['Akiba', 'Sano'], 'dataset': 'MNIST'
→ }
```

See also:

`optuna study set-user-attr` command, which sets an attribute via command line interface.

Adding User Attributes to Trials

As with `Study`, a `Trial` object provides `set_user_attr()` method. Attributes are set inside an objective function.

```
def objective(trial):
    iris = sklearn.datasets.load_iris()
    x, y = iris.data, iris.target

    svc_c = trial.suggest_loguniform('svc_c', 1e-10, 1e10)
    clf = sklearn.svm.SVC(C=svc_c)
    accuracy = sklearn.model_selection.cross_val_score(clf, x, y).mean()

    trial.set_user_attr('accuracy', accuracy)

    return 1.0 - accuracy # return error for minimization
```

We can access annotated attributes as:

```
study.trials[0].user_attrs # {'accuracy': 0.83}
```

Note that, in this example, the attribute is not annotated to a `Study` but a single `Trial`.

6.2.7 Pruning Unpromising Trials

This feature automatically stops unpromising trials at the early stages of the training (a.k.a., automated early-stopping). Optuna provides interfaces to concisely implement the pruning mechanism in iterative training algorithms.

Activating Pruners

To turn on the pruning feature, you need to call `report()` and `should_prune()` after each step of the iterative training. `report()` periodically monitors the intermediate objective values. `should_prune()` decides termination of the trial that does not meet a predefined condition.

```

"""filename: prune.py"""

import sklearn.datasets
import sklearn.linear_model
import sklearn.model_selection

import optuna

def objective(trial):
    iris = sklearn.datasets.load_iris()
    classes = list(set(iris.target))
    train_x, test_x, train_y, test_y = \
        sklearn.model_selection.train_test_split(iris.data, iris.target, test_size=0.
↪25, random_state=0)

    alpha = trial.suggest_loguniform('alpha', 1e-5, 1e-1)
    clf = sklearn.linear_model.SGDClassifier(alpha=alpha)

    for step in range(100):
        clf.partial_fit(train_x, train_y, classes=classes)

        # Report intermediate objective value.
        intermediate_value = 1.0 - clf.score(test_x, test_y)
        trial.report(intermediate_value, step)

        # Handle pruning based on the intermediate value.
        if trial.should_prune():
            raise optuna.exceptions.TrialPruned()

    return 1.0 - clf.score(test_x, test_y)

# Set up the median stopping rule as the pruning condition.
study = optuna.create_study(pruner=optuna.pruners.MedianPruner())
study.optimize(objective, n_trials=20)

```

Executing the script above:

```

$ python prune.py
[I 2018-11-21 17:27:57,836] Finished trial#0 resulted in value: 0.052631578947368474.
↪Current best value is 0.052631578947368474 with parameters: {'alpha': 0.
↪011428158279113485}.
[I 2018-11-21 17:27:57,963] Finished trial#1 resulted in value: 0.02631578947368418.
↪Current best value is 0.02631578947368418 with parameters: {'alpha': 0.
↪01862693201743629}.
[I 2018-11-21 17:27:58,164] Finished trial#2 resulted in value: 0.21052631578947367.
↪Current best value is 0.02631578947368418 with parameters: {'alpha': 0.
↪01862693201743629}.

```

(continues on next page)

(continued from previous page)

```
[I 2018-11-21 17:27:58,333] Finished trial#3 resulted in value: 0.02631578947368418.
↳Current best value is 0.02631578947368418 with parameters: {'alpha': 0.
↳01862693201743629}.
[I 2018-11-21 17:27:58,617] Finished trial#4 resulted in value: 0.23684210526315785.
↳Current best value is 0.02631578947368418 with parameters: {'alpha': 0.
↳01862693201743629}.
[I 2018-11-21 17:27:58,642] Setting status of trial#5 as TrialState.PRUNED.
[I 2018-11-21 17:27:58,666] Setting status of trial#6 as TrialState.PRUNED.
[I 2018-11-21 17:27:58,675] Setting status of trial#7 as TrialState.PRUNED.
[I 2018-11-21 17:27:59,183] Finished trial#8 resulted in value: 0.39473684210526316.
↳Current best value is 0.02631578947368418 with parameters: {'alpha': 0.
↳01862693201743629}.
[I 2018-11-21 17:27:59,202] Setting status of trial#9 as TrialState.PRUNED.
...

```

We can see Setting status of trial#{} as `TrialState.PRUNED` in the log messages. This means several trials are stopped before they finish all iterations.

Integration Modules for Pruning

To implement pruning mechanism in much simpler forms, Optuna provides integration modules for the following libraries.

- XGBoost: `optuna.integration.XGBoostPruningCallback`
- LightGBM: `optuna.integration.LightGBMPruningCallback`
- Chainer: `optuna.integration.ChainerPruningExtension`
- Keras: `optuna.integration.KerasPruningCallback`
- TensorFlow: `optuna.integration.TensorFlowPruningHook`
- tf.keras: `optuna.integration.TFKerasPruningCallback`
- MXNet: `optuna.integration.MXNetPruningCallback`
- PyTorch Ignite: `optuna.integration.PyTorchIgnitePruningHandler`
- PyTorch Lightning: `optuna.integration.PyTorchLightningPruningCallback`
- FastAI: `optuna.integration.FastAIPruningCallback`

For example, `XGBoostPruningCallback` introduces pruning without directly changing the logic of training iteration. (See also [example](#) for the entire script.)

```
pruning_callback = optuna.integration.XGBoostPruningCallback(trial, 'validation-error
↳')
bst = xgb.train(param, dtrain, evals=[(dtest, 'validation')], callbacks=[pruning_
↳callback])

```

6.2.8 User-Defined Sampler

Thanks to user-defined samplers, you can:

- experiment your own sampling algorithms,
- implement task-specific algorithms to refine the optimization performance, or
- wrap other optimization libraries to integrate them into Optuna pipelines (e.g., *SkoptSampler*).

This section describes the internal behavior of sampler classes and shows an example of implementing a user-defined sampler.

Overview of Sampler

A sampler has the responsibility to determine the parameter values to be evaluated in a trial. When a *suggest* API (e.g., *suggest_uniform()*) is called inside an objective function, the corresponding distribution object (e.g., *UniformDistribution*) is created internally. A sampler samples a parameter value from the distribution. The sampled value is returned to the caller of the *suggest* API and evaluated in the objective function.

To create a new sampler, you need to define a class that inherits *BaseSampler*. The base class has three abstract methods; *infer_relative_search_space()*, *sample_relative()*, and *sample_independent()*.

As the method names imply, Optuna supports two types of sampling: one is **relative sampling** that can consider the correlation of the parameters in a trial, and the other is **independent sampling** that samples each parameter independently.

At the beginning of a trial, *infer_relative_search_space()* is called to provide the relative search space for the trial. Then, *sample_relative()* is invoked to sample relative parameters from the search space. During the execution of the objective function, *sample_independent()* is used to sample parameters that don't belong to the relative search space.

Note: Please refer to the document of *BaseSampler* for further details.

An Example: Implementing SimulatedAnnealingSampler

For example, the following code defines a sampler based on Simulated Annealing (SA):

```
import numpy as np
import optuna

class SimulatedAnnealingSampler(optuna.samplers.BaseSampler):
    def __init__(self, temperature=100):
        self._rng = np.random.RandomState()
        self._temperature = temperature # Current temperature.
        self._current_trial = None # Current state.

    def sample_relative(self, study, trial, search_space):
        if search_space == {}:
            return {}

        #
        # An implementation of SA algorithm.
        #
```

(continues on next page)

(continued from previous page)

```

    # Calculate transition probability.
    prev_trial = study.trials[-2]
    if self._current_trial is None or prev_trial.value <= self._current_trial.
↪value:
        probability = 1.0
    else:
        probability = np.exp((self._current_trial.value - prev_trial.value) /
↪self._temperature)
        self._temperature *= 0.9 # Decrease temperature.

    # Transit the current state if the previous result is accepted.
    if self._rng.uniform(0, 1) < probability:
        self._current_trial = prev_trial

    # Sample parameters from the neighborhood of the current point.
    #
    # The sampled parameters will be used during the next execution of
    # the objective function passed to the study.
    params = {}
    for param_name, param_distribution in search_space.items():
        if not isinstance(param_distribution, optuna.distributions.
↪UniformDistribution):
            raise NotImplementedError('Only suggest_uniform() is supported')

        current_value = self._current_trial.params[param_name]
        width = (param_distribution.high - param_distribution.low) * 0.1
        neighbor_low = max(current_value - width, param_distribution.low)
        neighbor_high = min(current_value + width, param_distribution.high)
        params[param_name] = self._rng.uniform(neighbor_low, neighbor_high)

    return params

#
# The rest is boilerplate code and unrelated to SA algorithm.
#
def infer_relative_search_space(self, study, trial):
    return optuna.samplers.intersection_search_space(study)

def sample_independent(self, study, trial, param_name, param_distribution):
    independent_sampler = optuna.samplers.RandomSampler()
    return independent_sampler.sample_independent(study, trial, param_name, param_
↪distribution)

```

Note: In favor of code simplicity, the above implementation doesn't support some features (e.g., maximization). If you're interested in how to support those features, please see [examples/samplers/simulated_annealing.py](#).

You can use `SimulatedAnnealingSampler` in the same way as built-in samplers as follows:

```

def objective(trial):
    x = trial.suggest_uniform('x', -10, 10)
    y = trial.suggest_uniform('y', -5, 5)
    return x**2 + y

sampler = SimulatedAnnealingSampler()

```

(continues on next page)

(continued from previous page)

```
study = optuna.create_study(sampler=sampler)
study.optimize(objective, n_trials=100)
```

In this optimization, the values of x and y parameters are sampled by using `SimulatedAnnealingSampler.sample_relative` method.

Note: Strictly speaking, in the first trial, `SimulatedAnnealingSampler.sample_independent` method is used to sample parameter values. Because `intersection_search_space()` used in `SimulatedAnnealingSampler.infer_relative_search_space` cannot infer the search space if there are no complete trials.

6.3 API Reference

6.3.1 Command Line Interface

```
optuna
  [--version]
  [-v | -q]
  [--log-file LOG_FILE]
  [--debug]
  [--storage STORAGE]
```

--version

show program's version number and exit

-v, --verbose

Increase verbosity of output. Can be repeated.

-q, --quiet

Suppress output except warnings and errors.

--log-file <LOG_FILE>

Specify a file to log output. Disabled by default.

--debug

Show tracebacks on errors.

--storage <STORAGE>

DB URL. (e.g. `sqlite:///example.db`)

create-study

Create a new study.

```
optuna create-study
  [--study-name STUDY_NAME]
  [--direction {minimize,maximize}]
  [--skip-if-exists]
```

--study-name <STUDY_NAME>

A human-readable name of a study to distinguish it from others.

--direction <DIRECTION>

Set direction of optimization to a new study. Set ‘minimize’ for minimization and ‘maximize’ for maximization.

--skip-if-exists

If specified, the creation of the study is skipped without any error when the study name is duplicated.

This command is provided by the optuna plugin.

dashboard

Launch web dashboard (beta).

```
optuna dashboard
  --study STUDY
  [--out OUT]
  [--allow-websocket-origin BOKEH_ALLOW_WEBSOCKET_ORIGINS]
```

--study <STUDY>

Study name.

--out <OUT>, **-o** <OUT>

Output HTML file path. If it is not given, a HTTP server starts and the dashboard is served.

--allow-websocket-origin <BOKEH_ALLOW_WEBSOCKET_ORIGINS>

Allow websocket access from the specified host(s). Internally, it is used as the value of bokeh’s `--allow-websocket-origin` option. Please refer to <https://bokeh.pydata.org/en/latest/docs/reference/command/subcommands/serve.html> for more details.

This command is provided by the optuna plugin.

delete-study

Delete a specified study.

```
optuna delete-study [--study-name STUDY_NAME]
```

--study-name <STUDY_NAME>

A human-readable name of a study to distinguish it from others.

This command is provided by the optuna plugin.

storage upgrade

Upgrade the schema of a storage.

```
optuna storage upgrade
```

This command is provided by the optuna plugin.

studies

Show a list of studies.

```
optuna studies
  [-f {csv,json,table,value,yaml}]
  [-c COLUMN]
  [--quote {all,minimal,none,nonnumeric}]
  [--noindent]
  [--max-width <integer>]
  [--fit-width]
  [--print-empty]
  [--sort-column SORT_COLUMN]
```

-f <FORMATTER>, **--format** <FORMATTER>
the output format, defaults to table

-c COLUMN, **--column** COLUMN
specify the column(s) to include, can be repeated to show multiple columns

--quote <QUOTE_MODE>
when to include quotes, defaults to nonnumeric

--noindent
whether to disable indenting the JSON

--max-width <integer>
Maximum display width, <1 to disable. You can also use the CLIFF_MAX_TERM_WIDTH environment variable, but the parameter takes precedence.

--fit-width
Fit the table to the display width. Implied if **--max-width** greater than 0. Set the environment variable CLIFF_FIT_WIDTH=1 to always enable

--print-empty
Print empty table if there is no data to show.

--sort-column SORT_COLUMN
specify the column(s) to sort the data (columns specified first have a priority, non-existing columns are ignored), can be repeated

This command is provided by the optuna plugin.

study optimize

Start optimization of a study.

```
optuna study optimize
  [--n-trials N_TRIALS]
  [--timeout TIMEOUT]
  [--n-jobs N_JOBS]
  --study STUDY
  file
  method
```

--n-trials <N_TRIALS>
The number of trials. If this argument is not given, as many trials run as possible.

--timeout <TIMEOUT>
Stop study after the given number of second(s). If this argument is not given, as many trials run as possible.

--n-jobs <N_JOBS>

The number of parallel jobs. If this argument is set to -1, the number is set to CPU counts.

--study <STUDY>

Study name.

file

Python script file where the objective function resides.

method

The method name of the objective function.

This command is provided by the optuna plugin.

study set-user-attr

Set a user attribute to a study.

```
optuna study set-user-attr --study STUDY --key KEY --value VALUE
```

--study <STUDY>

Study name.

--key <KEY>, **-k** <KEY>

Key of the user attribute.

--value <VALUE>, **-v** <VALUE>

Value to be set.

This command is provided by the optuna plugin.

6.3.2 Distributions

class `optuna.distributions.UniformDistribution` (*low*, *high*)

A uniform distribution in the linear domain.

This object is instantiated by `suggest_uniform()`, and passed to `samplers` in general.

low

Lower endpoint of the range of the distribution. `low` is included in the range.

high

Upper endpoint of the range of the distribution. `high` is excluded from the range.

single()

Test whether the range of this distribution contains just a single value.

When this method returns `True`, `samplers` always sample the same value from the distribution.

Returns `True` if the range of this distribution contains just a single value, otherwise `False`.

class `optuna.distributions.LogUniformDistribution` (*low*, *high*)

A uniform distribution in the log domain.

This object is instantiated by `suggest_loguniform()`, and passed to `samplers` in general.

low

Lower endpoint of the range of the distribution. `low` is included in the range.

high

Upper endpoint of the range of the distribution. `high` is excluded from the range.

single()

Test whether the range of this distribution contains just a single value.

When this method returns `True`, `samplers` always sample the same value from the distribution.

Returns `True` if the range of this distribution contains just a single value, otherwise `False`.

class `optuna.distributions.DiscreteUniformDistribution` (*low*, *high*, *q*)

A discretized uniform distribution in the linear domain.

This object is instantiated by `suggest_discrete_uniform()`, and passed to `samplers` in general.

low

Lower endpoint of the range of the distribution. `low` is included in the range.

high

Upper endpoint of the range of the distribution. `high` is included in the range.

q

A discretization step.

single()

Test whether the range of this distribution contains just a single value.

When this method returns `True`, `samplers` always sample the same value from the distribution.

Returns `True` if the range of this distribution contains just a single value, otherwise `False`.

class `optuna.distributions.IntUniformDistribution` (*low*, *high*, *step=1*)

A uniform distribution on integers.

This object is instantiated by `suggest_int()`, and passed to `samplers` in general.

low

Lower endpoint of the range of the distribution. `low` is included in the range.

high

Upper endpoint of the range of the distribution. `high` is included in the range.

step

A step for spacing between values.

single()

Test whether the range of this distribution contains just a single value.

When this method returns `True`, `samplers` always sample the same value from the distribution.

Returns `True` if the range of this distribution contains just a single value, otherwise `False`.

class `optuna.distributions.CategoricalDistribution` (*choices*)

A categorical distribution.

This object is instantiated by `suggest_categorical()`, and passed to `samplers` in general.

Parameters `choices` – Parameter value candidates.

Note: Not all types are guaranteed to be compatible with all storages. It is recommended to restrict the types of the choices to `None`, `bool`, `int`, `float` and `str`.

choices

Parameter value candidates.

single()

Test whether the range of this distribution contains just a single value.

When this method returns `True`, `samplers` always sample the same value from the distribution.

Returns `True` if the range of this distribution contains just a single value, otherwise `False`.

`optuna.distributions.distribution_to_json(dist)`

Serialize a distribution to JSON format.

Parameters `dist` – A distribution to be serialized.

Returns A JSON string of a given distribution.

`optuna.distributions.json_to_distribution(json_str)`

Deserialize a distribution in JSON format.

Parameters `json_str` – A JSON-serialized distribution.

Returns A deserialized distribution.

`optuna.distributions.check_distribution_compatibility(dist_old, dist_new)`

A function to check compatibility of two distributions.

Note that this method is not supposed to be called by library users.

Parameters

- `dist_old` – A distribution previously recorded in storage.
- `dist_new` – A distribution newly added to storage.

Returns `True` denotes given distributions are compatible. Otherwise, they are not.

6.3.3 Exceptions

class `optuna.exceptions.OptunaError`

Base class for Optuna specific errors.

class `optuna.exceptions.TrialPruned`

Exception for pruned trials.

This error tells a trainer that the current `Trial` was pruned. It is supposed to be raised after `optuna.trial.Trial.should_prune()` as shown in the following example.

Example

```
import optuna
from sklearn.linear_model import SGDClassifier

def objective(trial):
    alpha = trial.suggest_uniform('alpha', 0.0, 1.0)
    clf = SGDClassifier(alpha=alpha)
    n_train_iter = 100

    for step in range(n_train_iter):
        clf.partial_fit(X_train, y_train, classes=classes)

        intermediate_value = clf.score(X_test, y_test)
        trial.report(intermediate_value, step)
```

(continues on next page)

(continued from previous page)

```

        if trial.should_prune():
            raise optuna.exceptions.TrialPruned()

    return clf.score(X_test, y_test)

study = optuna.create_study(direction='maximize')
study.optimize(objective, n_trials=20)

```

class `optuna.exceptions.CLIUsageError`

Exception for CLI.

CLI raises this exception when it receives invalid configuration.

class `optuna.exceptions.StorageInternalError`

Exception for storage operation.

This error is raised when an operation failed in backend DB of storage.

class `optuna.exceptions.DuplicatedStudyError`

Exception for a duplicated study name.

This error is raised when a specified study name already exists in the storage.

6.3.4 Hyperparameter Importance

`optuna.importance.get_param_importances(*args, **kwargs) → Dict[str, float]`

Evaluate parameter importances based on completed trials in the given study.

The parameter importances are returned as a dictionary where the keys consist of parameter names and their values importances. The importances are represented by floating point numbers that sum to 1.0 over the entire dictionary. The higher the value, the more important. The returned dictionary is of type `collections.OrderedDict` and is ordered by its values in a descending order.

If `params` is `None`, all parameter that are present in all of the completed trials are assessed. This implies that conditional parameters will be excluded from the evaluation. To assess the importances of conditional parameters, a `list` of parameter names can be specified via `params`. If specified, only completed trials that contain all of the parameters will be considered. If no such trials are found, an error will be raised.

If the given study does not contain completed trials, an error will be raised.

Note: If `params` is specified as an empty list, an empty dictionary is returned.

Parameters

- **study** – An optimized study.
- **evaluator** – An importance evaluator object that specifies which algorithm to base the importance assessment on. Defaults to `FanovaImportanceEvaluator`.
- **params** – A list of names of parameters to assess. If `None`, all parameters that are present in all of the completed trials are assessed.

Returns An `collections.OrderedDict` where the keys are parameter names and the values are assessed importances.

Note: Added in v1.3.0 as an experimental feature. The interface may change in newer versions without prior notice. See <https://github.com/optuna/optuna/releases/tag/v1.3.0>.

class `optuna.importance.FanovaImportanceEvaluator`
 fANOVA parameter importance evaluator.

Note: Requires the `fanova` Python package.

See also:

[An Efficient Approach for Assessing Hyperparameter Importance.](#)

Note: Added in v1.3.0 as an experimental feature. The interface may change in newer versions without prior notice. See <https://github.com/optuna/optuna/releases/tag/v1.3.0>.

evaluate (*study*: `optuna.study.Study`, *params*: `Optional[List[str]]`) → `Dict[str, float]`
 Evaluate parameter importances based on completed trials in the given study.

Note: This method is not meant to be called by library users.

See also:

Please refer to `get_param_importances()` for how a concrete evaluator should implement this method.

Parameters

- **study** – An optimized study.
- **params** – A list of names of parameters to assess. If `None`, all parameters that are present in all of the completed trials are assessed.

Returns An `collections.OrderedDict` where the keys are parameter names and the values are assessed importances.

6.3.5 Integration

class `optuna.integration.ChainerPruningExtension` (*trial*, *observation_key*,
pruner_trigger)

Chainer extension to prune unpromising trials.

See [the example](#) if you want to add a pruning extension which observes validation accuracy of a `Chainer Trainer`.

Parameters

- **trial** – A `Trial` corresponding to the current evaluation of the objective function.
- **observation_key** – An evaluation metric for pruning, e.g., `main/loss` and `validation/main/accuracy`. Please refer to [chainer.Reporter reference](#) for further details.

- **pruner_trigger** – A trigger to execute pruning. `pruner_trigger` is an instance of `IntervalTrigger` or `ManualScheduleTrigger`. `IntervalTrigger` can be specified by a tuple of the interval length and its unit like `(1, 'epoch')`.

class `optuna.integration.ChainerMNStudy` (*study*, *comm*)

A wrapper of `Study` to incorporate Optuna with ChainerMN.

See also:

`ChainerMNStudy` provides the same interface as `Study`. Please refer to `optuna.study.Study` for further details.

See the [example](#) if you want to optimize an objective function that trains neural network written with ChainerMN.

Parameters

- **study** – A `Study` object.
- **comm** – A `ChainerMN` communicator.

optimize (*func*, *n_trials=None*, *timeout=None*, *catch=()*)

Optimize an objective function.

This method provides the same interface as `optuna.study.Study.optimize()` except the absence of `n_jobs` argument.

class `optuna.integration.CmaEsSampler` (*x0=None*, *sigma0=None*, *cma_stds=None*,
seed=None, *cma_opts=None*,
n_startup_trials=1, *independent_sampler=None*,
warn_independent_sampling=True)

A Sampler using `cma` library as the backend.

Example

Optimize a simple quadratic function by using `CmaEsSampler`.

```
import optuna

def objective(trial):
    x = trial.suggest_uniform('x', -1, 1)
    y = trial.suggest_int('y', -1, 1)
    return x**2 + y

sampler = optuna.integration.CmaEsSampler()
study = optuna.create_study(sampler=sampler)
study.optimize(objective, n_trials=20)
```

Note that parallel execution of trials may affect the optimization performance of CMA-ES, especially if the number of trials running in parallel exceeds the population size.

Parameters

- **x0** – A dictionary of an initial parameter values for CMA-ES. By default, the mean of `low` and `high` for each distribution is used. Please refer to `cma.CMAEvolutionStrategy` for further details of `x0`.
- **sigma0** – Initial standard deviation of CMA-ES. By default, `sigma0` is set to `min_range / 6`, where `min_range` denotes the minimum range of the distributions in the search space. If distribution is categorical, `min_range` is `len(choices) - 1`. Please refer to `cma.CMAEvolutionStrategy` for further details of `sigma0`.

- **cma_stds** – A dictionary of multipliers of sigma0 for each parameters. The default value is 1.0. Please refer to `cma.CMAEvolutionStrategy` for further details of `cma_stds`.
- **seed** – A random seed for CMA-ES.
- **cma_opts** – Options passed to the constructor of `cma.CMAEvolutionStrategy` class.

Note that `BoundaryHandler`, `bounds`, `CMA_stds` and `seed` arguments in `cma_opts` will be ignored because it is added by `CmaEsSampler` automatically.

- **n_startup_trials** – The independent sampling is used instead of the CMA-ES algorithm until the given number of trials finish in the same study.
- **independent_sampler** – A `BaseSampler` instance that is used for independent sampling. The parameters not contained in the relative search space are sampled by this sampler. The search space for `CmaEsSampler` is determined by `intersection_search_space()`.

If `None` is specified, `RandomSampler` is used as the default.

See also:

`optuna.samplers` module provides built-in independent samplers such as `RandomSampler` and `TPESampler`.

- **warn_independent_sampling** – If this is `True`, a warning message is emitted when the value of a parameter is sampled by using an independent sampler.

Note that the parameters of the first trial in a study are always sampled via an independent sampler, so no warning messages are emitted in this case.

`reseed_rng()` → `None`

Reseed sampler's random number generator.

This method is called by the `Study` instance if trials are executed in parallel with the option `n_jobs>1`. In that case, the sampler instance will be replicated including the state of the random number generator, and they may suggest the same values. To prevent this issue, this method assigns a different seed to each random number generator.

class `optuna.integration.FastAIPruningCallback` (*learn, trial, monitor*)

FastAI callback to prune unpromising trials for fastai.

Note: This callback is for fastai<2.0, not the coming version developed in fastai/fastai_dev.

See [the example](#) if you want to add a pruning callback which monitors validation loss of a `Learner`.

Example

Register a pruning callback to `learn.fit` and `learn.fit_one_cycle`.

```
learn.fit(n_epochs, callbacks=[FastAIPruningCallback(learn, trial, 'valid_loss')])
learn.fit_one_cycle(
    n_epochs, cyc_len, max_lr,
    callbacks=[FastAIPruningCallback(learn, trial, 'valid_loss')])
```

Parameters

- **learn** – `fastai.basic_train.Learner`.
- **trial** – A `Trial` corresponding to the current evaluation of the objective function.

- **monitor** – An evaluation metric for pruning, e.g. `valid_loss` and `Accuracy`. Please refer to [fastai.Callback reference](#) for further details.

class `optuna.integration.PyTorchIgnitePruningHandler` (*trial, metric, trainer*)
PyTorch Ignite handler to prune unpromising trials.

See [the example](#) if you want to add a pruning handler which observes validation accuracy.

Parameters

- **trial** – A `Trial` corresponding to the current evaluation of the objective function.
- **metric** – A name of metric for pruning, e.g., `accuracy` and `loss`.
- **trainer** – A trainer engine of PyTorch Ignite. Please refer to [ignite.engine.Engine reference](#) for further details.

class `optuna.integration.KerasPruningCallback` (*trial, monitor, interval=1*)
Keras callback to prune unpromising trials.

See [the example](#) if you want to add a pruning callback which observes validation accuracy.

Parameters

- **trial** – A `Trial` corresponding to the current evaluation of the objective function.
- **monitor** – An evaluation metric for pruning, e.g., `val_loss` and `val_accuracy`. Please refer to [keras.Callback reference](#) for further details.
- **interval** – Check if trial should be pruned every n-th epoch. By default `interval=1` and pruning is performed after every epoch. Increase `interval` to run several epochs faster before applying pruning.

class `optuna.integration.LightGBMPruningCallback` (*trial, metric, valid_name='valid_0'*)
Callback for LightGBM to prune unpromising trials.

See [the example](#) if you want to add a pruning callback which observes AUC of a LightGBM model.

Parameters

- **trial** – A `Trial` corresponding to the current evaluation of the objective function.
- **metric** – An evaluation metric for pruning, e.g., `binary_error` and `multi_error`. Please refer to [LightGBM reference](#) for further details.
- **valid_name** – The name of the target validation. Validation names are specified by `valid_names` option of [train method](#). If omitted, `valid_0` is used which is the default name of the first validation. Note that this argument will be ignored if you are calling [cv method](#) instead of [train method](#).

`optuna.integration.lightgbm.train` (**args: Any, **kwargs: Any*) → *Any*
Wrapper of LightGBM Training API to tune hyperparameters.

It tunes important hyperparameters (e.g., `min_child_samples` and `feature_fraction`) in a stepwise manner. Arguments and keyword arguments for `lightgbm.train()` can be passed.

Note: Added in v0.18.0 as an experimental feature. The interface may change in newer versions without prior notice. See <https://github.com/optuna/optuna/releases/tag/v0.18.0>.

class `optuna.integration.MLflowCallback` (*tracking_uri=None, metric_name=value*)
Callback to track Optuna trials with MLflow.

This callback adds relevant information that is tracked by Optuna to MLflow. The MLflow experiment will be named after the Optuna study name.

Example

Add MLflow callback to Optuna optimization.

```
import optuna
from optuna.integration.mlflow import MLflowCallback

def objective(trial):
    x = trial.suggest_uniform('x', -10, 10)
    return (x - 2) ** 2

mlflc = MLflowCallback(
    tracking_uri=YOUR_TRACKING_URI,
    metric_name='my metric score',
)

study = optuna.create_study(study_name='my_study')
study.optimize(objective, n_trials=10, callbacks=[mlflc])
```

Parameters

- **tracking_uri** – The URI of the MLflow tracking server. Please refer to `mlflow.set_tracking_uri` for more details.
- **metric_name** – Name of the metric. Since the metric itself is just a number, *metric_name* can be used to give it a name. So you know later if it was roc-auc or accuracy.

Note: Added in v1.4.0 as an experimental feature. The interface may change in newer versions without prior notice. See <https://github.com/optuna/optuna/releases/tag/v1.4.0>.

class `optuna.integration.MXNetPruningCallback` (*trial, eval_metric*)
MXNet callback to prune unpromising trials.

See the [example](#) if you want to add a pruning callback which observes accuracy.

Parameters

- **trial** – A *Trial* corresponding to the current evaluation of the objective function.
- **eval_metric** – An evaluation metric name for pruning, e.g., `cross-entropy` and `accuracy`. If using default metrics like `mxnet.metrics.Accuracy`, use its default metric name. For custom metrics, use the `metric_name` provided to constructor. Please refer to [mxnet.metrics](#) reference for further details.

class `optuna.integration.PyTorchLightningPruningCallback` (*trial, monitor*)
PyTorch Lightning callback to prune unpromising trials.

See the [example](#) if you want to add a pruning callback which observes accuracy.

Parameters

- **trial** – A *Trial* corresponding to the current evaluation of the objective function.

- **monitor** – An evaluation metric for pruning, e.g., `val_loss` or `val_acc`. The metrics are obtained from the returned dictionaries from e.g. `pytorch_lightning.LightningModule.training_step` or `pytorch_lightning.LightningModule.validation_end` and the names thus depend on how this dictionary is formatted.

```
class optuna.integration.SkoptSampler(independent_sampler=None,  
                                     warn_independent_sampling=True,  
                                     skopt_kwargs=None, n_startup_trials=1)
```

Sampler using Scikit-Optimize as the backend.

Example

Optimize a simple quadratic function by using *SkoptSampler*.

```
import optuna

def objective(trial):
    x = trial.suggest_uniform('x', -10, 10)
    y = trial.suggest_int('y', 0, 10)
    return x**2 + y

sampler = optuna.integration.SkoptSampler()
study = optuna.create_study(sampler=sampler)
study.optimize(objective, n_trials=10)
```

Parameters

- **independent_sampler** – A *BaseSampler* instance that is used for independent sampling. The parameters not contained in the relative search space are sampled by this sampler. The search space for *SkoptSampler* is determined by *intersection_search_space()*.

If *None* is specified, *RandomSampler* is used as the default.

See also:

optuna.samplers module provides built-in independent samplers such as *RandomSampler* and *TPESampler*.

- **warn_independent_sampling** – If this is *True*, a warning message is emitted when the value of a parameter is sampled by using an independent sampler.

Note that the parameters of the first trial in a study are always sampled via an independent sampler, so no warning messages are emitted in this case.

- **skopt_kwargs** – Keyword arguments passed to the constructor of *skopt.Optimizer* class. Note that *dimensions* argument in *skopt_kwargs* will be ignored because it is added by *SkoptSampler* automatically.

- **n_startup_trials** – The independent sampling is used until the given number of trials finish in the same study.

reseed_rng() → *None*

Reseed sampler's random number generator.

This method is called by the *Study* instance if trials are executed in parallel with the option `n_jobs>1`. In that case, the sampler instance will be replicated including the state of the random number generator,

and they may suggest the same values. To prevent this issue, this method assigns a different seed to each random number generator.

```
class optuna.integration.TensorFlowPruningHook (trial, estimator, metric,
                                             run_every_steps)
```

TensorFlow SessionRunHook to prune unpromising trials.

See [the example](#) if you want to add a pruning hook to TensorFlow's estimator.

Parameters

- **trial** – A *Trial* corresponding to the current evaluation of the objective function.
- **estimator** – An estimator which you will use.
- **metric** – An evaluation metric for pruning, e.g., accuracy and loss.
- **run_every_steps** – An interval to watch the summary file.

```
class optuna.integration.TFKerasPruningCallback (trial, monitor)
tf.keras callback to prune unpromising trials.
```

This callback is intend to be compatible for TensorFlow v1 and v2, but only tested with TensorFlow v1.

See [the example](#) if you want to add a pruning callback which observes the validation accuracy.

Parameters

- **trial** – A *Trial* corresponding to the current evaluation of the objective function.
- **monitor** – An evaluation metric for pruning, e.g., val_loss or val_acc.

```
class optuna.integration.XGBoostPruningCallback (trial, observation_key)
Callback for XGBoost to prune unpromising trials.
```

See [the example](#) if you want to add a pruning callback which observes validation AUC of a XGBoost model.

Parameters

- **trial** – A *Trial* corresponding to the current evaluation of the objective function.
- **observation_key** – An evaluation metric for pruning, e.g., validation-error and validation-merror. Please refer to `eval_metric` in [XGBoost reference](#) for further details.

```
class optuna.integration.OptunaSearchCV (estimator, param_distributions, cv=5, enable_pruning=False,
                                         error_score=nan, max_iter=1000, n_jobs=1, n_trials=10,
                                         random_state=None, refit=True, return_train_score=False,
                                         scoring=None, study=None, subsample=1.0, timeout=None,
                                         verbose=0)
```

Hyperparameter search with cross-validation.

Warning: This feature is experimental. The interface may be changed in the future.

Parameters

- **estimator** – Object to use to fit the data. This is assumed to implement the scikit-learn estimator interface. Either this needs to provide `score`, or `scoring` must be passed.
- **param_distributions** – Dictionary where keys are parameters and values are distributions. Distributions are assumed to implement the optuna distribution interface.

- **cv** – Cross-validation strategy. Possible inputs for cv are:
 - integer to specify the number of folds in a CV splitter,
 - a CV splitter,
 - an iterable yielding (train, test) splits as arrays of indices.

For integer, if estimator is a classifier and y is either binary or multiclass, `sklearn.model_selection.StratifiedKFold` is used. otherwise, `sklearn.model_selection.KFold` is used.

- **enable_pruning** – If `True`, pruning is performed in the case where the underlying estimator supports `partial_fit`.
- **error_score** – Value to assign to the score if an error occurs in fitting. If 'raise', the error is raised. If numeric, `sklearn.exceptions.FitFailedWarning` is raised. This does not affect the refit step, which will always raise the error.
- **max_iter** – Maximum number of epochs. This is only used if the underlying estimator supports `partial_fit`.
- **n_jobs** – Number of parallel jobs. -1 means using all processors.
- **n_trials** – Number of trials. If `None`, there is no limitation on the number of trials. If `timeout` is also set to `None`, the study continues to create trials until it receives a termination signal such as Ctrl+C or SIGTERM. This trades off runtime vs quality of the solution.
- **random_state** – Seed of the pseudo random number generator. If int, this is the seed used by the random number generator. If `numpy.random.RandomState` object, this is the random number generator. If `None`, the global random state from `numpy.random` is used.
- **refit** – If `True`, refit the estimator with the best found hyperparameters. The refitted estimator is made available at the `best_estimator_` attribute and permits using `predict` directly.
- **return_train_score** – If `True`, training scores will be included. Computing training scores is used to get insights on how different hyperparameter settings impact the overfitting/underfitting trade-off. However computing training scores can be computationally expensive and is not strictly required to select the hyperparameters that yield the best generalization performance.
- **scoring** – String or callable to evaluate the predictions on the test data. If `None`, `score` on the estimator is used.
- **study** – Study corresponds to the optimization task. If `None`, a new study is created.
- **subsample** – Proportion of samples that are used during hyperparameter search.
 - If int, then draw `subsample` samples.
 - If float, then draw `subsample * X.shape[0]` samples.
- **timeout** – Time limit in seconds for the search of appropriate models. If `None`, the study is executed without time limitation. If `n_trials` is also set to `None`, the study continues to create trials until it receives a termination signal such as Ctrl+C or SIGTERM. This trades off runtime vs quality of the solution.
- **verbose** – Verbosity level. The higher, the more messages.

best_estimator_

Estimator that was chosen by the search. This is present only if `refit` is set to `True`.

n_splits_

Number of cross-validation splits.

refit_time_

Time for refitting the best estimator. This is present only if `refit` is set to `True`.

sample_indices_

Indices of samples that are used during hyperparameter search.

scorer_

Scorer function.

study_

Actual study.

Examples

```
import optuna
from sklearn.datasets import load_iris
from sklearn.svm import SVC

clf = SVC(gamma='auto')
param_distributions = {
    'C': optuna.distributions.LogUniformDistribution(1e-10, 1e+10)
}
optuna_search = optuna.integration.OptunaSearchCV(
    clf,
    param_distributions
)
X, y = load_iris(return_X_y=True)
optuna_search.fit(X, y)
y_pred = optuna_search.predict(X)
```

property best_index_

Index which corresponds to the best candidate parameter setting.

property best_params_

Parameters of the best trial in the *Study*.

property best_score_

Mean cross-validated score of the best estimator.

property best_trial_

Best trial in the *Study*.

property classes_

Class labels.

property decision_function

Call `decision_function` on the best estimator.

This is available only if the underlying estimator supports `decision_function` and `refit` is set to `True`.

fit (*X*, *y=None*, *groups=None*, ***fit_params*)

Run fit with all sets of parameters.

Parameters

- **X** – Training data.
- **y** – Target variable.
- **groups** – Group labels for the samples used while splitting the dataset into train/test set.
- ****fit_params** – Parameters passed to `fit` on the estimator.

Returns Return self.

Return type self

property inverse_transform

Call `inverse_transform` on the best estimator.

This is available only if the underlying estimator supports `inverse_transform` and `refit` is set to `True`.

property n_trials_

Actual number of trials.

property predict

Call `predict` on the best estimator.

This is available only if the underlying estimator supports `predict` and `refit` is set to `True`.

property predict_log_proba

Call `predict_log_proba` on the best estimator.

This is available only if the underlying estimator supports `predict_log_proba` and `refit` is set to `True`.

property predict_proba

Call `predict_proba` on the best estimator.

This is available only if the underlying estimator supports `predict_proba` and `refit` is set to `True`.

score (*X*, *y=None*)

Return the score on the given data.

Parameters

- **X** – Data.
- **y** – Target variable.

Returns Scaler score.

Return type score

property score_samples

Call `score_samples` on the best estimator.

This is available only if the underlying estimator supports `score_samples` and `refit` is set to `True`.

property set_user_attr

Call `set_user_attr` on the *Study*.

property transform

Call `transform` on the best estimator.

This is available only if the underlying estimator supports `transform` and `refit` is set to `True`.

property trials_

All trials in the *Study*.

property trials_dataframe

Call `trials_dataframe` on the *Study*.

property user_attrs_

User attributes in the *Study*.

class `optuna.integration.AllenNLPExecutor` (*trial*, *config_file*, *serialization_dir*, *metrics=best_validation_accuracy*)

AllenNLP extension to use optuna with a jsonnet config file.

This feature is experimental since AllenNLP major release will come soon. The interface may change without prior notice to correspond to the update.

See the examples of [objective function](#) and [config file](#).

Parameters

- **trial** – A *Trial* corresponding to the current evaluation of the objective function.
- **config_file** – Config file for AllenNLP. Hyperparameters should be masked with `std.extVar`. Please refer to [the config example](#).
- **serialization_dir** – A path which model weights and logs are saved.
- **metrics** – An evaluation metric for the result of `objective`.
- **include_package** – Additional packages to include. For more information, please see [AllenNLP documentation](#).

Note: Added in v1.4.0 as an experimental feature. The interface may change in newer versions without prior notice. See <https://github.com/optuna/optuna/releases/tag/v1.4.0>.

run () → float

Train a model using AllenNLP.

`optuna.integration.allennlp.dump_best_config` (*input_config_file: str*, *output_config_file: str*, *study: optuna.study.Study*) → None

Save jsonnet after updating with parameters from the best trial in the study.

Parameters

- **input_config_file** – Input configuration file used with *AllenNLPExecutor*.
- **output_config_file** – Output configuration file.
- **study** – An optimized study (`study.best_trial` does not raise an error).

6.3.6 Logging

`optuna.logging.get_verbosity` () → int

Return the current level for the Optuna's root logger.

Returns Logging level, e.g., `optuna.logging.DEBUG` and `optuna.logging.INFO`.

Note: Optuna has following logging levels:

- `optuna.logging.CRITICAL`, `optuna.logging.FATAL`
- `optuna.logging.ERROR`
- `optuna.logging.WARNING`, `optuna.logging.WARN`

- `optuna.logging.INFO`
- `optuna.logging.DEBUG`

`optuna.logging.set_verbosity(verbosity: int) → None`
Set the level for the Optuna's root logger.

Parameters `verbosity` – Logging level, e.g., `optuna.logging.DEBUG` and `optuna.logging.INFO`.

`optuna.logging.disable_default_handler() → None`
Disable the default handler of the Optuna's root logger.

Example

Stop and then resume logging to `sys.stderr`.

```
import optuna

study = optuna.create_study()

# There are no logs in sys.stderr.
optuna.logging.disable_default_handler()
study.optimize(objective, n_trials=10)

# There are logs in sys.stderr.
optuna.logging.enable_default_handler()
study.optimize(objective, n_trials=10)
# [I 2020-02-23 17:00:54,314] Finished trial#10 with value: ...
# [I 2020-02-23 17:00:54,356] Finished trial#11 with value: ...
# ...
```

`optuna.logging.enable_default_handler() → None`
Enable the default handler of the Optuna's root logger.

Please refer to the example shown in `disable_default_handler()`.

`optuna.logging.disable_propagation() → None`
Disable propagation of the library log outputs.

Note that log propagation is disabled by default.

`optuna.logging.enable_propagation() → None`
Enable propagation of the library log outputs.

Please disable the Optuna's default handler to prevent double logging if the root logger has been configured.

Example

Propagate all log output to the root logger in order to save them to the file.

```
import optuna
import logging

logger = logging.getLogger()

logger.setLevel(logging.INFO) # Setup the root logger.
```

(continues on next page)

(continued from previous page)

```

logger.addHandler(logging.FileHandler("foo.log", mode="w"))

optuna.logging.enable_propagation() # Propagate logs to the root logger.
optuna.logging.disable_default_handler() # Stop showing logs in sys.stderr.

study = optuna.create_study()

logger.info("Start optimization.")
study.optimize(objective, n_trials=10)

with open('foo.log') as f:
    assert f.readline() == "Start optimization.\n"
    assert f.readline().startswith("Finished trial#0 with value:")

```

6.3.7 Multi-objective

Samplers

class `optuna.multi_objective.samplers.BaseMultiObjectiveSampler`

Base class for multi-objective samplers.

The abstract methods of this class are the same as ones defined by `BaseSampler` except for taking multi-objective versions of study and trial instances as the arguments.

Note: Added in v1.4.0 as an experimental feature. The interface may change in newer versions without prior notice. See <https://github.com/optuna/optuna/releases/tag/v1.4.0>.

abstract infer_relative_search_space (*study*: `optuna.multi_objective.study.MultiObjectiveStudy`,
trial: `optuna.multi_objective.trial.FrozenMultiObjectiveTrial`)
 → `Dict[str, optuna.distributions.BaseDistribution]`

Infer the search space that will be used by relative sampling in the target trial.

This method is called right before `sample_relative()` method, and the search space returned by this method is passed to it. The parameters not contained in the search space will be sampled by using `sample_independent()` method.

Parameters

- **study** – Target study object.
- **trial** – Target trial object.

Returns A dictionary containing the parameter names and parameter’s distributions.

See also:

Please refer to `intersection_search_space()` as an implementation of `infer_relative_search_space()`.

abstract sample_independent (*study*: `optuna.multi_objective.study.MultiObjectiveStudy`,
trial: `optuna.multi_objective.trial.FrozenMultiObjectiveTrial`,
param_name: `str`, *param_distribution*: `optuna.distributions.BaseDistribution`) → Any

Sample a parameter for a given distribution.

This method is called only for the parameters not contained in the search space returned by `sample_relative()` method. This method is suitable for sampling algorithms that do not use the relationship between parameters such as random sampling.

Parameters

- **study** – Target study object.
- **trial** – Target trial object.
- **param_name** – Name of the sampled parameter.
- **param_distribution** – Distribution object that specifies a prior and/or scale of the sampling algorithm.

Returns A parameter value.

```
abstract sample_relative (study: optuna.multi_objective.study.MultiObjectiveStudy, trial: optuna.multi_objective.trial.FrozenMultiObjectiveTrial, search_space: Dict[str, optuna.distributions.BaseDistribution]) → Dict[str, Any]
```

Sample parameters in a given search space.

This method is called once at the beginning of each trial, i.e., right before the evaluation of the objective function. This method is suitable for sampling algorithms that use the relationship between parameters.

Parameters

- **study** – Target study object.
- **trial** – Target trial object.
- **search_space** – The search space returned by `infer_relative_search_space()`.

Returns A dictionary containing the parameter names and the values.

```
class optuna.multi_objective.samplers.RandomMultiObjectiveSampler (seed=None)  
Multi-objective sampler using random sampling.
```

This sampler is based on *independent sampling*. See also `BaseMultiObjectiveSampler` for more details of ‘independent sampling’.

Example

```
import optuna
from optuna.multi_objective.samplers import RandomMultiObjectiveSampler

def objective(trial):
    x = trial.suggest_uniform('x', -5, 5)
    y = trial.suggest_uniform('y', -5, 5)
    return x ** 2, y + 10

study = optuna.multi_objective.create_study(
    ["minimize", "minimize"],
    sampler=RandomMultiObjectiveSampler()
)
study.optimize(objective, n_trials=10)
```

Args: `seed`: Seed for random number generator.

Note: Added in v1.4.0 as an experimental feature. The interface may change in newer versions without prior notice. See <https://github.com/optuna/optuna/releases/tag/v1.4.0>.

Study

class `optuna.multi_objective.study.MultiObjectiveStudy` (*study*)

A study corresponds to a multi-objective optimization task, i.e., a set of trials.

This object provides interfaces to run a new `Trial`, access trials' history, set/get user-defined attributes of the study itself.

Note that the direct use of this constructor is not recommended. To create and load a study, please refer to the documentation of `create_study()` and `load_study()` respectively.

Note: Added in v1.4.0 as an experimental feature. The interface may change in newer versions without prior notice. See <https://github.com/optuna/optuna/releases/tag/v1.4.0>.

property `directions`

Return the optimization direction list.

Returns A list that contains the optimization direction for each objective value.

enqueue_trial (*params: Dict[str, Any]*) → `None`

Enqueue a trial with given parameter values.

You can fix the next sampling parameters which will be evaluated in your objective function.

Please refer to the documentation of `optuna.study.Study.enqueue_trial()` for further details.

Parameters `params` – Parameter values to pass your objective function.

get_pareto_front_trials () → `List[optuna.multi_objective.trial.FrozenMultiObjectiveTrial]`

Return trials located at the pareto front in the study.

A trial is located at the pareto front if there are no trials that dominate the trial. It's called that a trial `t0` dominates another trial `t1` if `all(v0 <= v1)` for `v0, v1` in `zip(t0.values, t1.values)` and `any(v0 < v1)` for `v0, v1` in `zip(t0.values, t1.values)` are held.

Returns A list of `FrozenMultiObjectiveTrial` objects.

get_trials (*deepcopy: bool = True*) → `List[optuna.multi_objective.trial.FrozenMultiObjectiveTrial]`

Return all trials in the study.

The returned trials are ordered by trial number.

For library users, it's recommended to use more handy `trials` property to get the trials instead.

Parameters `deepcopy` – Flag to control whether to apply `copy.deepcopy()` to the trials.

Note that if you set the flag to `False`, you shouldn't mutate any fields of the returned trial.

Otherwise the internal state of the study may corrupt and unexpected behavior may happen.

Returns A list of `FrozenMultiObjectiveTrial` objects.

property `n_objectives`

Return the number of objectives.

Returns Number of objectives.

optimize (*objective*: Callable[[*multi_objective.trial.MultiObjectiveTrial*], Tuple[float]], *timeout*: Optional[int] = None, *n_trials*: Optional[int] = None, *n_jobs*: int = 1, *catch*: Union[Tuple()], Tuple[Type[Exception]] = (), *callbacks*: Optional[List[Callable[[*multi_objective.study.MultiObjectiveStudy*, *multi_objective.trial.FrozenMultiObjectiveTrial*], None]]] = None, *gc_after_trial*: bool = True, *show_progress_bar*: bool = False) → None

Optimize an objective function.

This method is the same as `optuna.study.Study.optimize()` except for taking an objective function that returns multi-objective values as the argument.

Please refer to the documentation of `optuna.study.Study.optimize()` for further details.

property sampler

Return the sampler.

Returns A `BaseMultiObjectiveSampler` object.

set_user_attr (*key*: str, *value*: Any) → None

Set a user attribute to the study.

Parameters

- **key** – A key string of the attribute.
- **value** – A value of the attribute. The value should be JSON serializable.

property trials

Return all trials in the study.

The returned trials are ordered by trial number.

This is a short form of `self.get_trials(deepcopy=True)`.

Returns A list of `FrozenMultiObjectiveTrial` objects.

property user_attrs

Return user attributes.

Returns A dictionary containing all user attributes.

`optuna.multi_objective.study.create_study(*args, **kwargs) → multi_objective.study.MultiObjectiveStudy`

Create a new `MultiObjectiveStudy`.

Parameters

- **directions** – Optimization direction for each objective value. Set `minimize` for minimization and `maximize` for maximization.
- **study_name** – Study’s name. If this argument is set to `None`, a unique name is generated automatically.
- **storage** – Database URL. If this argument is set to `None`, in-memory storage is used, and the `Study` will not be persistent.

Note:

When a database URL is passed, Optuna internally uses `SQLAlchemy` to handle the database. Please refer to [SQLAlchemy’s document](#) for further details. If you want to specify non-default options to `SQLAlchemy Engine`, you can instantiate `RDBStorage` with your desired options and pass it to the `storage` argument instead of a URL.

- **sampler** – A sampler object that implements background algorithm for value suggestion. If `None` is specified, `RandomMultiObjectiveSampler` is used as the default. See also `samplers`.
- **load_if_exists** – Flag to control the behavior to handle a conflict of study names. In the case where a study named `study_name` already exists in the storage, a `DuplicatedStudyError` is raised if `load_if_exists` is set to `False`. Otherwise, the creation of the study is skipped, and the existing one is returned.

Returns A `MultiObjectiveStudy` object.

Note: Added in v1.4.0 as an experimental feature. The interface may change in newer versions without prior notice. See <https://github.com/optuna/optuna/releases/tag/v1.4.0>.

```
optuna.multi_objective.study.load_study(*args, **kwargs) →
                                     multi_objective.study.MultiObjectiveStudy
Load the existing MultiObjectiveStudy that has the specified name.
```

Parameters

- **study_name** – Study’s name. Each study has a unique name as an identifier.
- **storage** – Database URL such as `sqlite:///example.db`. Please see also the documentation of `create_study()` for further details.
- **sampler** – A sampler object that implements background algorithm for value suggestion. If `None` is specified, `RandomMultiObjectiveSampler` is used as the default. See also `samplers`.

Returns A `MultiObjectiveStudy` object.

Note: Added in v1.4.0 as an experimental feature. The interface may change in newer versions without prior notice. See <https://github.com/optuna/optuna/releases/tag/v1.4.0>.

Trial

```
class optuna.multi_objective.trial.MultiObjectiveTrial(trial)
```

A trial is a process of evaluating an objective function.

This object is passed to an objective function and provides interfaces to get parameter suggestion, manage the trial’s state, and set/get user-defined attributes of the trial.

Note that the direct use of this constructor is not recommended. This object is seamlessly instantiated and passed to the objective function behind the `optuna.multi_objective.study.MultiObjectiveStudy.optimize()` method; hence library users do not care about instantiation of this object.

Parameters `trial` – A `Trial` object.

Note: Added in v1.4.0 as an experimental feature. The interface may change in newer versions without prior notice. See <https://github.com/optuna/optuna/releases/tag/v1.4.0>.

```
property datetime_start
```

Return start datetime.

Returns Datetime where the `Trial` started.

property distributions

Return distributions of parameters to be optimized.

Returns A dictionary containing all distributions.

property number

Return trial's number which is consecutive and unique in a study.

Returns A trial number.

property params

Return parameters to be optimized.

Returns A dictionary containing all parameters.

report (*values: Tuple[float], step: int*) → None

Report intermediate objective function values for a given step.

The reported values are used by the pruners to determine whether this trial should be pruned.

See also:

Please refer to [BasePruner](#).

Note: The reported values are converted to `float` type by applying `float()` function internally. Thus, it accepts all float-like types (e.g., `numpy.float32`). If the conversion fails, a `TypeError` is raised.

Parameters

- **values** – Intermediate objective function values for a given step.
- **step** – Step of the trial (e.g., Epoch of neural network training).

set_user_attr (*key: str, value: Any*) → None

Set user attributes to the trial.

Please refer to the documentation of `optuna.trial.Trial.set_user_attr()` for further details.

suggest_categorical (*name: str, choices: Sequence[Union[None, bool, int, float, str]]*) → Union[None, bool, int, float, str]

Suggest a value for the categorical parameter.

Please refer to the documentation of `optuna.trial.Trial.suggest_categorical()` for further details.

suggest_discrete_uniform (*name: str, low: float, high: float, q: float*) → float

Suggest a value for the discrete parameter.

Please refer to the documentation of `optuna.trial.Trial.suggest_discrete_uniform()` for further details.

suggest_float (*name: str, low: float, high: float, *, log: bool = False, step: Optional[float] = None*) → float

Suggest a value for the floating point parameter.

Please refer to the documentation of `optuna.trial.Trial.suggest_float()` for further details.

suggest_int (*name: str, low: int, high: int*) → int

Suggest a value for the integer parameter.

Please refer to the documentation of `optuna.trial.Trial.suggest_int()` for further details.

suggest_loguniform (*name: str, low: float, high: float*) → float

Suggest a value for the continuous parameter.

Please refer to the documentation of `optuna.trial.Trial.suggest_loguniform()` for further details.

suggest_uniform (*name: str, low: float, high: float*) → float

Suggest a value for the continuous parameter.

Please refer to the documentation of `optuna.trial.Trial.suggest_uniform()` for further details.

property user_attrs

Return user attributes.

Returns A dictionary containing all user attributes.

class `optuna.multi_objective.trial.FrozenMultiObjectiveTrial` (*n_objectives, trial*)

Status and results of a `MultiObjectiveTrial`.

number

Unique and consecutive number of `MultiObjectiveTrial` for each `MultiObjectiveStudy`. Note that this field uses zero-based numbering.

state

`TrialState` of the `MultiObjectiveTrial`.

values

Objective values of the `MultiObjectiveTrial`.

datetime_start

Datetime where the `MultiObjectiveTrial` started.

datetime_complete

Datetime where the `MultiObjectiveTrial` finished.

params

Dictionary that contains suggested parameters.

distributions

Dictionary that contains the distributions of `params`.

user_attrs

Dictionary that contains the attributes of the `MultiObjectiveTrial` set with `optuna.multi_objective.trial.MultiObjectiveTrial.set_user_attr()`.

intermediate_values

Intermediate objective values set with `optuna.multi_objective.trial.MultiObjectiveTrial.report()`.

Note: Added in v1.4.0 as an experimental feature. The interface may change in newer versions without prior notice. See <https://github.com/optuna/optuna/releases/tag/v1.4.0>.

6.3.8 Pruners

class `optuna.pruners.BasePruner`

Base class for pruners.

abstract prune (*study, trial*)

Judge whether the trial should be pruned based on the reported values.

Note that this method is not supposed to be called by library users. Instead, `optuna.trial.Trial.report()` and `optuna.trial.Trial.should_prune()` provide user interfaces to implement pruning mechanism in an objective function.

Parameters

- **study** – Study object of the target study.
- **trial** – FrozenTrial object of the target trial.

Returns A boolean value representing whether the trial should be pruned.

class `optuna.pruners.MedianPruner` (*n_startup_trials=5, n_warmup_steps=0, interval_steps=1*)

Pruner using the median stopping rule.

Prune if the trial's best intermediate result is worse than median of intermediate results of previous trials at the same step.

Example

We minimize an objective function with the median stopping rule.

```
import optuna
from sklearn.linear_model import SGDClassifier

def objective(trial):
    alpha = trial.suggest_uniform('alpha', 0.0, 1.0)
    clf = SGDClassifier(alpha=alpha)
    n_train_iter = 100

    for step in range(n_train_iter):
        clf.partial_fit(X_train, y_train, classes=classes)

        intermediate_value = clf.score(X_test, y_test)
        trial.report(intermediate_value, step)

        if trial.should_prune():
            raise optuna.exceptions.TrialPruned()

    return clf.score(X_test, y_test)

study = optuna.create_study(direction='maximize',
                            pruner=optuna.pruners.MedianPruner(n_startup_trials=5,
                                                                n_warmup_steps=30,
                                                                interval_steps=10))
study.optimize(objective, n_trials=20)
```

Parameters

- **n_startup_trials** – Pruning is disabled until the given number of trials finish in the same study.

- **n_warmup_steps** – Pruning is disabled until the trial exceeds the given number of step.
- **interval_steps** – Interval in number of steps between the pruning checks, offset by the warmup steps. If no value has been reported at the time of a pruning check, that particular check will be postponed until a value is reported.

class `optuna.pruners.NopPruner`

Pruner which never prunes trials.

Example

```
import optuna
from sklearn.linear_model import SGDClassifier

def objective(trial):
    alpha = trial.suggest_uniform('alpha', 0.0, 1.0)
    clf = SGDClassifier(alpha=alpha)
    n_train_iter = 100

    for step in range(n_train_iter):
        clf.partial_fit(X_train, y_train, classes=classes)

        intermediate_value = clf.score(X_test, y_test)
        trial.report(intermediate_value, step)

        if trial.should_prune():
            assert False, "should_prune() should always return False with this_
↳pruner."
            raise optuna.exceptions.TrialPruned()

    return clf.score(X_test, y_test)

study = optuna.create_study(direction='maximize',
                            pruner=optuna.pruners.NopPruner())
study.optimize(objective, n_trials=20)
```

class `optuna.pruners.PercentilePruner` (*percentile*, *n_startup_trials=5*, *n_warmup_steps=0*, *interval_steps=1*)

Pruner to keep the specified percentile of the trials.

Prune if the best intermediate value is in the bottom percentile among trials at the same step.

Example

```
import optuna
from sklearn.linear_model import SGDClassifier

def objective(trial):
    alpha = trial.suggest_uniform('alpha', 0.0, 1.0)
    clf = SGDClassifier(alpha=alpha)
    n_train_iter = 100

    for step in range(n_train_iter):
        clf.partial_fit(X_train, y_train, classes=classes)
```

(continues on next page)

(continued from previous page)

```

intermediate_value = clf.score(X_test, y_test)
trial.report(intermediate_value, step)

    if trial.should_prune():
        raise optuna.exceptions.TrialPruned()

    return clf.score(X_test, y_test)

study = optuna.create_study(
    direction='maximize',
    pruner=optuna.pruners.PercentilePruner(25.0, n_startup_trials=5,
                                          n_warmup_steps=30, interval_steps=10))
study.optimize(objective, n_trials=20)

```

Parameters

- **percentile** – Percentile which must be between 0 and 100 inclusive (e.g., When given 25.0, top of 25th percentile trials are kept).
- **n_startup_trials** – Pruning is disabled until the given number of trials finish in the same study.
- **n_warmup_steps** – Pruning is disabled until the trial exceeds the given number of step.
- **interval_steps** – Interval in number of steps between the pruning checks, offset by the warmup steps. If no value has been reported at the time of a pruning check, that particular check will be postponed until a value is reported. Value must be at least 1.

class `optuna.pruners.SuccessiveHalvingPruner` (*min_resource='auto', reduction_factor=4, min_early_stopping_rate=0*)

Pruner using Asynchronous Successive Halving Algorithm.

[Successive Halving](#) is a bandit-based algorithm to identify the best one among multiple configurations. This class implements an asynchronous version of Successive Halving. Please refer to the paper of [Asynchronous Successive Halving](#) for detailed descriptions.

Note that, this class does not take care of the parameter for the maximum resource, referred to as R in the paper. The maximum resource allocated to a trial is typically limited inside the objective function (e.g., `step` number in `simple.py`, `EPOCH` number in `chainer_integration.py`).

Example

We minimize an objective function with `SuccessiveHalvingPruner`.

```

import optuna
from sklearn.linear_model import SGDClassifier

def objective(trial):
    alpha = trial.suggest_uniform('alpha', 0.0, 1.0)
    clf = SGDClassifier(alpha=alpha)
    n_train_iter = 100

    for step in range(n_train_iter):
        clf.partial_fit(X_train, y_train, classes=classes)

    intermediate_value = clf.score(X_test, y_test)

```

(continues on next page)

(continued from previous page)

```

trial.report(intermediate_value, step)

if trial.should_prune():
    raise optuna.exceptions.TrialPruned()

return clf.score(X_test, y_test)

study = optuna.create_study(direction='maximize',
                           pruner=optuna.pruners.SuccessiveHalvingPruner())
study.optimize(objective, n_trials=20)

```

Parameters

- **min_resource** – A parameter for specifying the minimum resource allocated to a trial (in the [paper](#) this parameter is referred to as r). This parameter defaults to ‘auto’ where the value is determined based on a heuristic that looks at the number of required steps for the first trial to complete.

A trial is never pruned until it executes $\text{min_resource} \times \text{reduction_factor}^{\text{min_early_stopping_rate}}$ steps (i.e., the completion point of the first rung). When the trial completes the first rung, it will be promoted to the next rung only if the value of the trial is placed in the top $\frac{1}{\text{reduction_factor}}$ fraction of the all trials that already have reached the point (otherwise it will be pruned there). If the trial won the competition, it runs until the next completion point (i.e., $\text{min_resource} \times \text{reduction_factor}^{(\text{min_early_stopping_rate} + \text{rung})}$ steps) and repeats the same procedure.

- **reduction_factor** – A parameter for specifying reduction factor of promotable trials (in the [paper](#) this parameter is referred to as η). At the completion point of each rung, about $\frac{1}{\text{reduction_factor}}$ trials will be promoted.
- **min_early_stopping_rate** – A parameter for specifying the minimum early-stopping rate (in the [paper](#) this parameter is referred to as s).

```

class optuna.pruners.HyperbandPruner (min_resource=1,      max_resource=auto,      re-
                                     reduction_factor=3,    n_brackets=None,
                                     min_early_stopping_rate_low=None)

```

Pruner using Hyperband.

As SuccessiveHalving (SHA) requires the number of configurations n as its hyperparameter. For a given finite budget B , all the configurations have the resources of $\frac{B}{n}$ on average. As you can see, there will be a trade-off of B and $\frac{B}{n}$. [Hyperband](#) attacks this trade-off by trying different n values for a fixed budget.

Note:

- In the Hyperband paper, the counterpart of [RandomSampler](#) is used.
 - Optuna uses [TPESampler](#) by default.
 - The benchmark result shows that [optuna.pruners.HyperbandPruner](#) supports both samplers.
-

Note: If you use [HyperbandPruner](#) with [TPESampler](#), it’s recommended to consider to set larger `n_trials` or `timeout` to make full use of the characteristics of [TPESampler](#) because [TPESampler](#) uses some (by default, 10) [Trials](#) for its startup.

As Hyperband runs multiple [SuccessiveHalvingPruner](#) and collect trials based on the current [Trial](#)’s bracket ID, each bracket needs to observe more than 10 [Trials](#) for [TPESampler](#) to adapt its search space.

Thus, for example, if `HyperbandPruner` has 4 pruners in it, at least 4×10 trials are consumed for startup.

Note: Hyperband has several *SuccessiveHalvingPruner*. Each *SuccessiveHalvingPruner* is referred as “bracket” in the original paper. The number of brackets is an important factor to control the early stopping behavior of Hyperband and is automatically determined by `min_resource`, `max_resource` and `reduction_factor` as *The number of brackets = $\text{floor}(\log_{\text{reduction_factor}}(\text{max_resource} / \text{min_resource})) + 1$* . Please set `reduction_factor` so that the number of brackets is not too large (about 4 ~ 6 in most use cases). Please see Section 3.6 of the [original paper](#) for the detail.

Example

We minimize an objective function with Hyperband pruning algorithm.

```
import optuna
from sklearn.linear_model import SGDClassifier

n_train_iter = 100

def objective(trial):
    alpha = trial.suggest_uniform('alpha', 0.0, 1.0)
    clf = SGDClassifier(alpha=alpha)

    for step in range(n_train_iter):
        clf.partial_fit(X_train, y_train, classes=classes)

        intermediate_value = clf.score(X_test, y_test)
        trial.report(intermediate_value, step)

        if trial.should_prune():
            raise optuna.exceptions.TrialPruned()

    return clf.score(X_test, y_test)

study = optuna.create_study(
    direction='maximize',
    pruner=optuna.pruners.HyperbandPruner(
        min_resource=1,
        max_resource=n_train_iter,
        reduction_factor=3
    )
)
study.optimize(objective, n_trials=20)
```

Parameters

- **min_resource** – A parameter for specifying the minimum resource allocated to a trial noted as r in the paper. A smaller r will give a result faster, but a larger r will give a better guarantee of successful judging between configurations. See the details for *SuccessiveHalvingPruner*.
- **max_resource** – A parameter for specifying the maximum resource allocated to a trial. R in the paper corresponds to `max_resource / min_resource`. This value represents and should match the maximum iteration steps (e.g., the number of epochs for neural

networks). When this argument is “auto”, the maximum resource is estimated according to the completed trials. The default value of this argument is “auto”.

Note: With “auto”, the maximum resource will be the largest step reported by `report()` in the first, or one of the first if trained in parallel, completed trial. No trials will be pruned until the maximum resource is determined.

- **reduction_factor** – A parameter for specifying reduction factor of promotable trials noted as η in the paper. See the details for `SuccessiveHalvingPruner`.
- **n_brackets** – Deprecated since version 1.4.0: This argument will be removed from `HyperbandPruner`. The number of brackets are automatically determined based on `min_resource`, `max_resource` and `reduction_factor`.

The number of `SuccessiveHalvingPruners` (brackets). Defaults to 4.

- **min_early_stopping_rate_low** – Deprecated since version 1.4.0: This argument will be removed from `HyperbandPruner`.

A parameter for specifying the minimum early-stopping rate. This parameter is related to a parameter that is referred to as s and used in `Asynchronous SuccessiveHalving paper`. The minimum early stopping rate for i th bracket is $i + s$.

Note: Added in v1.1.0 as an experimental feature. The interface may change in newer versions without prior notice. See <https://github.com/optuna/optuna/releases/tag/v1.1.0>.

class `optuna.pruners.ThresholdPruner` (*lower: Optional[float] = None, upper: Optional[float] = None, n_warmup_steps: int = 0, interval_steps: int = 1*)

Pruner to detect outlying metrics of the trials.

Prune if a metric exceeds upper threshold, falls behind lower threshold or reaches nan.

Example

```
from optuna import create_study
from optuna.exceptions import TrialPruned
from optuna.pruners import ThresholdPruner

def objective_for_upper(trial):
    for step, y in enumerate(ys_for_upper):
        trial.report(y, step)

        if trial.should_prune():
            raise TrialPruned()
    return ys_for_upper[-1]

def objective_for_lower(trial):
    for step, y in enumerate(ys_for_lower):
        trial.report(y, step)

        if trial.should_prune():
            raise TrialPruned()
```

(continues on next page)

(continued from previous page)

```

return ys_for_lower[-1]

ys_for_upper = [0.0, 0.1, 0.2, 0.5, 1.2]
ys_for_lower = [100.0, 90.0, 0.1, 0.0, -1]
n_trial_step = 5

study = create_study(pruner=ThresholdPruner(upper=1.0))
study.optimize(objective_for_upper, n_trials=10)

study = create_study(pruner=ThresholdPruner(lower=0.0))
study.optimize(objective_for_lower, n_trials=10)

```

Args

lower: A minimum value which determines whether pruner prunes or not. If an intermediate value is smaller than lower, it prunes.

upper: A maximum value which determines whether pruner prunes or not. If an intermediate value is larger than upper, it prunes.

n_warmup_steps: Pruning is disabled until the trial exceeds the given number of step.

interval_steps: Interval in number of steps between the pruning checks, offset by the warmup steps. If no value has been reported at the time of a pruning check, that particular check will be postponed until a value is reported. Value must be at least 1.

6.3.9 Samplers

class optuna.samplers.BaseSampler

Base class for samplers.

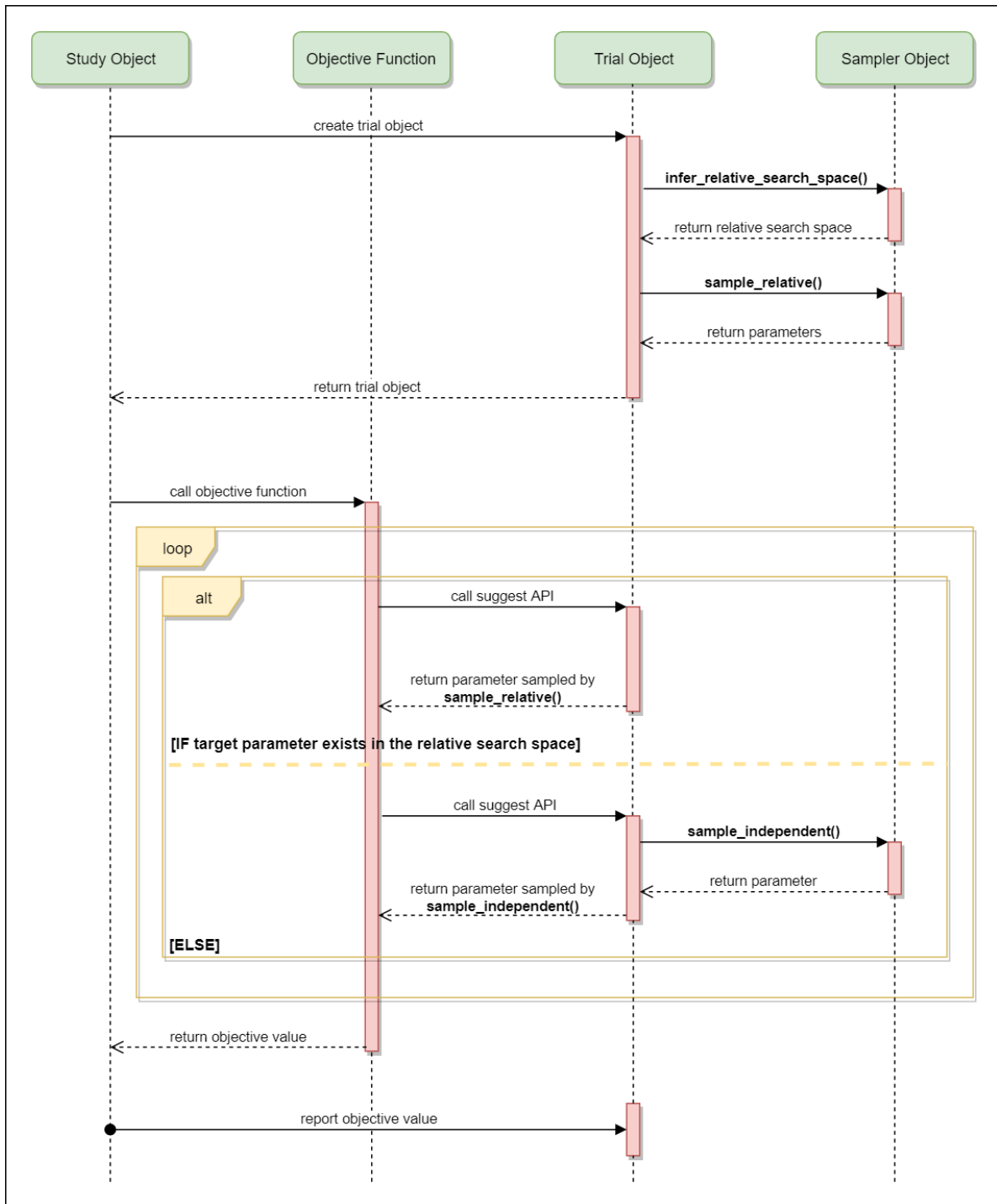
Optuna combines two types of sampling strategies, which are called *relative sampling* and *independent sampling*.

The *relative sampling* determines values of multiple parameters simultaneously so that sampling algorithms can use relationship between parameters (e.g., correlation). Target parameters of the relative sampling are described in a relative search space, which is determined by `infer_relative_search_space()`.

The *independent sampling* determines a value of a single parameter without considering any relationship between parameters. Target parameters of the independent sampling are the parameters not described in the relative search space.

More specifically, parameters are sampled by the following procedure. At the beginning of a trial, `infer_relative_search_space()` is called to determine the relative search space for the trial. Then, `sample_relative()` is invoked to sample parameters from the relative search space. During the execution of the objective function, `sample_independent()` is used to sample parameters that don't belong to the relative search space.

The following figure depicts the lifetime of a trial and how the above three methods are called in the trial.



abstract infer_relative_search_space (*study, trial*)

Infer the search space that will be used by relative sampling in the target trial.

This method is called right before `sample_relative()` method, and the search space returned by

this method is pass to it. The parameters not contained in the search space will be sampled by using `sample_independent()` method.

Parameters

- **study** – Target study object.
- **trial** – Target trial object.

Returns A dictionary containing the parameter names and parameter’s distributions.

See also:

Please refer to `intersection_search_space()` as an implementation of `infer_relative_search_space()`.

reseed_rng() → `None`

Reseed sampler’s random number generator.

This method is called by the `Study` instance if trials are executed in parallel with the option `n_jobs>1`. In that case, the sampler instance will be replicated including the state of the random number generator, and they may suggest the same values. To prevent this issue, this method assigns a different seed to each random number generator.

abstract sample_independent (*study, trial, param_name, param_distribution*)

Sample a parameter for a given distribution.

This method is called only for the parameters not contained in the search space returned by `sample_relative()` method. This method is suitable for sampling algorithms that do not use relationship between parameters such as random sampling and TPE.

Parameters

- **study** – Target study object.
- **trial** – Target trial object.
- **param_name** – Name of the sampled parameter.
- **param_distribution** – Distribution object that specifies a prior and/or scale of the sampling algorithm.

Returns A parameter value.

abstract sample_relative (*study, trial, search_space*)

Sample parameters in a given search space.

This method is called once at the beginning of each trial, i.e., right before the evaluation of the objective function. This method is suitable for sampling algorithms that use relationship between parameters such as Gaussian Process and CMA-ES.

Parameters

- **study** – Target study object.
- **trial** – Target trial object.
- **search_space** – The search space returned by `infer_relative_search_space()`.

Returns A dictionary containing the parameter names and the values.

class `optuna.samplers.GridSampler` (*search_space*)

Sampler using grid search.

With `GridSampler`, the trials suggest all combinations of parameters in the given search space during the study.

Example

```
import optuna

def objective(trial):
    x = trial.suggest_uniform('x', -100, 100)
    y = trial.suggest_int('y', -100, 100)
    return x ** 2 + y ** 2

search_space = {
    'x': [-50, 0, 50],
    'y': [-99, 0, 99]
}
study = optuna.create_study(sampler=optuna.samplers.GridSampler(search_space))
study.optimize(objective, n_trials=3*3)
```

Note: `GridSampler` raises an error if all combinations in the passed `search_space` has already been evaluated. Please make sure that unnecessary trials do not run during optimization by properly setting `n_trials` in the `optimize()` method.

Note: `GridSampler` does not take care of a parameter's quantization specified by discrete suggest methods but just samples one of values specified in the search space. E.g., in the following code snippet, either of `-0.5` or `0.5` is sampled as `x` instead of an integer point.

```
import optuna

def objective(trial):
    # The following suggest method specifies integer points between -5 and 5.
    x = trial.suggest_discrete_uniform('x', -5, 5, 1)
    return x ** 2

# Non-int points are specified in the grid.
search_space = {'x': [-0.5, 0.5]}
study = optuna.create_study(sampler=optuna.samplers.GridSampler(search_space))
study.optimize(objective, n_trials=2)
```

Parameters `search_space` – A dictionary whose key and value are a parameter name and the corresponding candidates of values, respectively.

Note: Added in v1.2.0 as an experimental feature. The interface may change in newer versions without prior notice. See <https://github.com/optuna/optuna/releases/tag/v1.2.0>.

class `optuna.samplers.RandomSampler` (`seed=None`)
Sampler using random sampling.

This sampler is based on *independent sampling*. See also `BaseSampler` for more details of ‘independent sampling’.

Example

```
import optuna
from optuna.samplers import RandomSampler

def objective(trial):
    x = trial.suggest_uniform('x', -5, 5)
    return x**2

study = optuna.create_study(sampler=RandomSampler())
study.optimize(objective, n_trials=10)
```

Args: seed: Seed for random number generator.

reseed_rng() → None

Reseed sampler's random number generator.

This method is called by the *Study* instance if trials are executed in parallel with the option `n_jobs>1`. In that case, the sampler instance will be replicated including the state of the random number generator, and they may suggest the same values. To prevent this issue, this method assigns a different seed to each random number generator.

```
class optuna.samplers.TPESampler(consider_prior=True, prior_weight=1.0, consider_magic_clip=True, consider_endpoints=False,
                                n_startup_trials=10, n_ei_candidates=24,
                                gamma=<function default_gamma>, weights=<function
                                default_weights>, seed=None)
```

Sampler using TPE (Tree-structured Parzen Estimator) algorithm.

This sampler is based on *independent sampling*. See also *BaseSampler* for more details of 'independent sampling'.

On each trial, for each parameter, TPE fits one Gaussian Mixture Model (GMM) $l(x)$ to the set of parameter values associated with the best objective values, and another GMM $g(x)$ to the remaining parameter values. It chooses the parameter value x that maximizes the ratio $l(x)/g(x)$.

For further information about TPE algorithm, please refer to the following papers:

- [Algorithms for Hyper-Parameter Optimization](#)
- [Making a Science of Model Search: Hyperparameter Optimization in Hundreds of Dimensions for Vision Architectures](#)

Example

```
import optuna
from optuna.samplers import TPESampler

def objective(trial):
    x = trial.suggest_uniform('x', -10, 10)
    return x**2

study = optuna.create_study(sampler=TPESampler())
study.optimize(objective, n_trials=10)
```

Parameters

- **consider_prior** – Enhance the stability of Parzen estimator by imposing a Gaussian prior when `True`. The prior is only effective if the sampling distribution is either `UniformDistribution`, `DiscreteUniformDistribution`, `LogUniformDistribution`, or `IntUniformDistribution`.
- **prior_weight** – The weight of the prior. This argument is used in `UniformDistribution`, `DiscreteUniformDistribution`, `LogUniformDistribution`, `IntUniformDistribution` and `CategoricalDistribution`.
- **consider_magic_clip** – Enable a heuristic to limit the smallest variances of Gaussians used in the Parzen estimator.
- **consider_endpoints** – Take endpoints of domains into account when calculating variances of Gaussians in Parzen estimator. See the original paper for details on the heuristics to calculate the variances.
- **n_startup_trials** – The random sampling is used instead of the TPE algorithm until the given number of trials finish in the same study.
- **n_ei_candidate** – Number of candidate samples used to calculate the expected improvement.
- **gamma** – A function that takes the number of finished trials and returns the number of trials to form a density function for samples with low grains. See the original paper for more details.
- **weights** – A function that takes the number of finished trials and returns a weight for them. See [Making a Science of Model Search: Hyperparameter Optimization in Hundreds of Dimensions for Vision Architectures](#) for more details.
- **seed** – Seed for random number generator.

static hyperopt_parameters()

Return the the default parameters of hyperopt (v0.1.2).

`TPESampler` can be instantiated with the parameters returned by this method.

Example

Create a `TPESampler` instance with the default parameters of `hyperopt`.

```
import optuna
from optuna.samplers import TPESampler

def objective(trial):
    x = trial.suggest_uniform('x', -10, 10)
    return x**2

sampler = TPESampler(**TPESampler.hyperopt_parameters())
study = optuna.create_study(sampler=sampler)
study.optimize(objective, n_trials=10)
```

Returns A dictionary containing the default parameters of `hyperopt`.

reseed_rng() → `None`

Reseed sampler's random number generator.

This method is called by the `Study` instance if trials are executed in parallel with the option `n_jobs>1`. In that case, the sampler instance will be replicated including the state of the random number generator, and they may suggest the same values. To prevent this issue, this method assigns a different seed to each random number generator.

```
class optuna.samplers.CmaEsSampler(x0: Optional[Dict[str, Any]] = None, sigma0:
    Optional[float] = None, n_startup_trials:
    int = 1, independent_sampler: Optional[optuna.samplers.base.BaseSampler] = None,
    warn_independent_sampling: bool = True, seed: Optional[int] = None)
```

A Sampler using CMA-ES algorithm.

Example

Optimize a simple quadratic function by using `CmaEsSampler`.

```
import optuna

def objective(trial):
    x = trial.suggest_uniform('x', -1, 1)
    y = trial.suggest_int('y', -1, 1)
    return x ** 2 + y

sampler = optuna.samplers.CmaEsSampler()
study = optuna.create_study(sampler=sampler)
study.optimize(objective, n_trials=20)
```

Please note that this sampler does not support `CategoricalDistribution`. If your search space contains categorical parameters, I recommend you to use `TPESampler` instead. Furthermore, there is room for performance improvements in parallel optimization settings. This sampler cannot use some trials for updating the parameters of multivariate normal distribution.

See also:

You can also use `optuna.integration.CmaEsSampler` which is a sampler using `cma` library as the backend.

Parameters

- **x0** – A dictionary of an initial parameter values for CMA-ES. By default, the mean of `low` and `high` for each distribution is used.
- **sigma0** – Initial standard deviation of CMA-ES. By default, `sigma0` is set to `min_range / 6`, where `min_range` denotes the minimum range of the distributions in the search space.
- **seed** – A random seed for CMA-ES.
- **n_startup_trials** – The independent sampling is used instead of the CMA-ES algorithm until the given number of trials finish in the same study.
- **independent_sampler** – A `BaseSampler` instance that is used for independent sampling. The parameters not contained in the relative search space are sampled by this sampler. The search space for `CmaEsSampler` is determined by `intersection_search_space()`.

If `None` is specified, `RandomSampler` is used as the default.

See also:

`optuna.samplers` module provides built-in independent samplers such as `RandomSampler` and `TPESampler`.

- **warn_independent_sampling** – If this is `True`, a warning message is emitted when the value of a parameter is sampled by using an independent sampler.

Note that the parameters of the first trial in a study are always sampled via an independent sampler, so no warning messages are emitted in this case.

reseed_rng() → `None`

Reseed sampler's random number generator.

This method is called by the `Study` instance if trials are executed in parallel with the option `n_jobs>1`. In that case, the sampler instance will be replicated including the state of the random number generator, and they may suggest the same values. To prevent this issue, this method assigns a different seed to each random number generator.

class `optuna.samplers.IntersectionSearchSpace`

A class to calculate the intersection search space of a `BaseStudy`.

Intersection search space contains the intersection of parameter distributions that have been suggested in the completed trials of the study so far. If there are multiple parameters that have the same name but different distributions, neither is included in the resulting search space (i.e., the parameters with dynamic value ranges are excluded).

Note that an instance of this class is supposed to be used for only one study. If different studies are passed to `calculate()`, a `ValueError` is raised.

calculate(*study*: `optuna.study.BaseStudy`, *ordered_dict*: `bool = False`) → `Dict[str, optuna.distributions.BaseDistribution]`

Returns the intersection search space of the `BaseStudy`.

Parameters

- **study** – A study with completed trials.
- **ordered_dict** – A boolean flag determining the return type. If `False`, the returned object will be a `dict`. If `True`, the returned object will be an `collections.OrderedDict` sorted by keys, i.e. parameter names.

Returns A dictionary containing the parameter names and parameter's distributions.

`optuna.samplers.intersection_search_space`(*study*: `optuna.study.BaseStudy`, *ordered_dict*: `bool = False`) → `Dict[str, optuna.distributions.BaseDistribution]`

Return the intersection search space of the `BaseStudy`.

Intersection search space contains the intersection of parameter distributions that have been suggested in the completed trials of the study so far. If there are multiple parameters that have the same name but different distributions, neither is included in the resulting search space (i.e., the parameters with dynamic value ranges are excluded).

Note: `IntersectionSearchSpace` provides the same functionality with a much faster way. Please consider using it if you want to reduce execution time as much as possible.

Parameters

- **study** – A study with completed trials.

- **ordered_dict** – A boolean flag determining the return type. If `False`, the returned object will be a `dict`. If `True`, the returned object will be an `collections.OrderedDict` sorted by keys, i.e. parameter names.

Returns A dictionary containing the parameter names and parameter’s distributions.

6.3.10 Storages

class `optuna.storages.RDBStorage` (*url, engine_kwargs=None, skip_compatibility_check=False*)
Storage class for RDB backend.

Note that library users can instantiate this class, but the attributes provided by this class are not supposed to be directly accessed by them.

Example

Create an `RDBStorage` instance with customized `pool_size` and `timeout` settings.

```
import optuna

def objective(trial):
    x = trial.suggest_uniform('x', -100, 100)
    return x ** 2

storage = optuna.storages.RDBStorage(
    url='sqlite:///memory:',
    engine_kwargs={
        'pool_size': 20,
        'connect_args': {
            'timeout': 10
        }
    }
)

study = optuna.create_study(storage=storage)
study.optimize(objective, n_trials=10)
```

Parameters

- **url** – URL of the storage.
- **engine_kwargs** – A dictionary of keyword arguments that is passed to `sqlalchemy.engine.create_engine` function.
- **skip_compatibility_check** – Flag to skip schema compatibility check if set to `True`.

Note: If you use MySQL, `pool_pre_ping` will be set to `True` by default to prevent connection timeout. You can turn it off with `engine_kwargs['pool_pre_ping']=False`, but it is recommended to keep the setting if execution time of your objective function is longer than the `wait_timeout` of your MySQL configuration.

class `optuna.storages.RedisStorage` (*url*)
Storage class for Redis backend.

Note that library users can instantiate this class, but the attributes provided by this class are not supposed to be directly accessed by them.

Example

We create an `RedisStorage` instance using the given redis database URL.

```

>>> import optuna
>>>
>>> def objective(trial):
>>>     ...
>>>
>>> storage = optuna.storages.redis.RedisStorage(
>>>     url='redis://passwd@localhost:port/db',
>>> )
>>>
>>> study = optuna.create_study(storage=storage)
>>> study.optimize(objective)

```

Parameters `url` – URL of the redis storage, password and db are optional. (ie: `redis://localhost:6379`)

Note: If you use plan to use Redis as a storage mechanism for optuna, make sure Redis is installed and running. Please execute `$ pip install -U redis` to install redis python library.

Note: Added in v1.4.0 as an experimental feature. The interface may change in newer versions without prior notice. See <https://github.com/optuna/optuna/releases/tag/v1.4.0>.

6.3.11 Structs

class `optuna.structs.TrialState` (*value*)

State of a *Trial*.

RUNNING

The *Trial* is running.

COMPLETE

The *Trial* has been finished without any error.

PRUNED

The *Trial* has been pruned with *TrialPruned*.

FAIL

The *Trial* has failed due to an uncaught error.

Deprecated since version 1.4.0: This class is deprecated. Please use *TrialState* instead.

class `optuna.structs.StudyDirection` (*value*)

Direction of a *Study*.

NOT_SET

Direction has not been set.

MINIMIZE

Study minimizes the objective function.

MAXIMIZE

Study maximizes the objective function.

Deprecated since version 1.4.0: This class is deprecated. Please use *StudyDirection* instead.

class `optuna.structs.FrozenTrial` (*number*, *state*, *value*, *datetime_start*, *datetime_complete*,
params, *distributions*, *user_attrs*, *system_attrs*, *intermediate_values*, *trial_id*)

Status and results of a *Trial*.

Deprecated since version 1.4.0: This class was moved to *trial*. Please use *FrozenTrial* instead.

number

Unique and consecutive number of *Trial* for each *Study*. Note that this field uses zero-based numbering.

state

TrialState of the *Trial*.

value

Objective value of the *Trial*.

datetime_start

Datetime where the *Trial* started.

datetime_complete

Datetime where the *Trial* finished.

params

Dictionary that contains suggested parameters.

user_attrs

Dictionary that contains the attributes of the *Trial* set with `optuna.trial.Trial.set_user_attr()`.

intermediate_values

Intermediate objective values set with `optuna.trial.Trial.report()`.

property distributions

Dictionary that contains the distributions of *params*.

property duration

Return the elapsed time taken to complete the trial.

Returns The duration.

class `optuna.structs.StudySummary` (*study_name*, *direction*, *best_trial*, *user_attrs*, *system_attrs*,
n_trials, *datetime_start*, *study_id*)

Basic attributes and aggregated results of a *Study*.

Deprecated since version 1.4.0: This class was moved to *study*. Please use *StudySummary* instead.

See also `optuna.study.get_all_study_summaries()`.

study_name

Name of the *Study*.

direction

StudyDirection of the *Study*.

best_trial

FrozenTrial with best objective value in the *Study*.

user_attrs

Dictionary that contains the attributes of the *Study* set with `optuna.study.Study.set_user_attr()`.

system_attrs

Dictionary that contains the attributes of the *Study* internally set by Optuna.

n_trials

The number of trials ran in the *Study*.

datetime_start

Datetime where the *Study* started.

property study_id

Return the study ID.

Deprecated since version 0.20.0: The direct use of this attribute is deprecated and it is recommended that you use *study_name* instead.

Returns The study ID.

6.3.12 Study

class `optuna.study.Study` (*study_name*, *storage*, *sampler=None*, *pruner=None*)

A study corresponds to an optimization task, i.e., a set of trials.

This object provides interfaces to run a new *Trial*, access trials' history, set/get user-defined attributes of the study itself.

Note that the direct use of this constructor is not recommended. To create and load a study, please refer to the documentation of *create_study()* and *load_study()* respectively.

property best_params

Return parameters of the best trial in the study.

Returns A dictionary containing parameters of the best trial.

property best_trial

Return the best trial in the study.

Returns A `FrozenTrial` object of the best trial.

property best_value

Return the best objective value in the study.

Returns A float representing the best objective value.

property direction

Return the direction of the study.

Returns A *StudyDirection* object.

enqueue_trial (***kwargs*)

Enqueue a trial with given parameter values.

You can fix the next sampling parameters which will be evaluated in your objective function.

Example:

```
import optuna

def objective(trial):
    x = trial.suggest_uniform('x', 0, 10)
    return x ** 2

study = optuna.create_study()
```

(continues on next page)

(continued from previous page)

```

study.enqueue_trial({'x': 5})
study.enqueue_trial({'x': 0})
study.optimize(objective, n_trials=2)

assert study.trials[0].params == {'x': 5}
assert study.trials[1].params == {'x': 0}

```

Args:**params:** Parameter values to pass your objective function.

Note: Added in v1.2.0 as an experimental feature. The interface may change in newer versions without prior notice. See <https://github.com/optuna/optuna/releases/tag/v1.2.0>.

get_trials (*deepcopy=True*)

Return all trials in the study.

The returned trials are ordered by trial number.

For library users, it's recommended to use more handy *trials* property to get the trials instead.**Parameters** *deepcopy* – Flag to control whether to apply `copy.deepcopy()` to the trials.Note that if you set the flag to `False`, you shouldn't mutate any fields of the returned trial.

Otherwise the internal state of the study may corrupt and unexpected behavior may happen.

Returns A list of `FrozenTrial` objects.**optimize** (*func*, *n_trials=None*, *timeout=None*, *n_jobs=1*, *catch=()*, *callbacks=None*, *gc_after_trial=True*, *show_progress_bar=False*)

Optimize an objective function.

Optimization is done by choosing a suitable set of hyperparameter values from a given range. Uses a sampler which implements the task of value suggestion based on a specified distribution. The sampler is specified in `create_study()` and the default choice for the sampler is TPE. See also *TPESampler* for more details on 'TPE'.

Parameters

- **func** – A callable that implements objective function.
- **n_trials** – The number of trials. If this argument is set to `None`, there is no limitation on the number of trials. If `timeout` is also set to `None`, the study continues to create trials until it receives a termination signal such as Ctrl+C or SIGTERM.
- **timeout** – Stop study after the given number of second(s). If this argument is set to `None`, the study is executed without time limitation. If `n_trials` is also set to `None`, the study continues to create trials until it receives a termination signal such as Ctrl+C or SIGTERM.
- **n_jobs** – The number of parallel jobs. If this argument is set to `-1`, the number is set to CPU count.
- **catch** – A study continues to run even when a trial raises one of the exceptions specified in this argument. Default is an empty tuple, i.e. the study will stop for any exception except for *TrialPruned*.

- **callbacks** – List of callback functions that are invoked at the end of each trial. Each function must accept two parameters with the following types in this order: `Study` and `FrozenTrial`.
- **gc_after_trial** – Flag to execute garbage collection at the end of each trial. By default, garbage collection is enabled, just in case. You can turn it off with this argument if memory is safely managed in your objective function.
- **show_progress_bar** – Flag to show progress bars or not. To disable progress bar, set this `False`. Currently, progress bar is experimental feature and disabled when `n_jobs` $\neq 1$.

set_user_attr (*key*, *value*)

Set a user attribute to the study.

Parameters

- **key** – A key string of the attribute.
- **value** – A value of the attribute. The value should be JSON serializable.

property study_id

Return the study ID.

Deprecated since version 0.20.0: The direct use of this attribute is deprecated and it is recommended that you use `study_name` instead.

Returns The study ID.

property trials

Return all trials in the study.

The returned trials are ordered by trial number.

This is a short form of `self.get_trials(deepcopy=True)`.

Returns A list of `FrozenTrial` objects.

trials_dataframe (*attrs*='number', *value*, *datetime_start*, *datetime_complete*, *duration*, *params*, *user_attrs*, *system_attrs*, *state*, *multi_index*=False)

Export trials as a pandas `DataFrame`.

The `DataFrame` provides various features to analyze studies. It is also useful to draw a histogram of objective values and to export trials as a CSV file. If there are no trials, an empty `DataFrame` is returned.

Example

```
import optuna
import pandas

def objective(trial):
    x = trial.suggest_uniform('x', -1, 1)
    return x ** 2

study = optuna.create_study()
study.optimize(objective, n_trials=3)

# Create a dataframe from the study.
df = study.trials_dataframe()
assert isinstance(df, pandas.DataFrame)
assert df.shape[0] == 3 # n_trials.
```

Parameters

- **attrs** – Specifies field names of `FrozenTrial` to include them to a `DataFrame` of trials.
- **multi_index** – Specifies whether the returned `DataFrame` employs `MultiIndex` or not. Columns that are hierarchical by nature such as `(params, x)` will be flattened to `params_x` when set to `False`.

Returns A pandas `DataFrame` of trials in the `Study`.

property user_attrs

Return user attributes.

Returns A dictionary containing all user attributes.

`optuna.study.create_study` (*storage=None, sampler=None, pruner=None, study_name=None, direction='minimize', load_if_exists=False*)

Create a new `Study`.

Parameters

- **storage** – Database URL. If this argument is set to `None`, in-memory storage is used, and the `Study` will not be persistent.

Note:

When a database URL is passed, Optuna internally uses `SQLAlchemy` to handle the database. Please refer to `SQLAlchemy's document` for further details. If you want to specify non-default options to `SQLAlchemy Engine`, you can instantiate `RDBStorage` with your desired options and pass it to the `storage` argument instead of a URL.

- **sampler** – A sampler object that implements background algorithm for value suggestion. If `None` is specified, `TPESampler` is used as the default. See also `samplers`.
- **pruner** – A pruner object that decides early stopping of unpromising trials. See also `pruners`.
- **study_name** – Study's name. If this argument is set to `None`, a unique name is generated automatically.
- **direction** – Direction of optimization. Set `minimize` for minimization and `maximize` for maximization.
- **load_if_exists** – Flag to control the behavior to handle a conflict of study names. In the case where a study named `study_name` already exists in the `storage`, a `DuplicatedStudyError` is raised if `load_if_exists` is set to `False`. Otherwise, the creation of the study is skipped, and the existing one is returned.

Returns A `Study` object.

`optuna.study.load_study` (*study_name, storage, sampler=None, pruner=None*)

Load the existing `Study` that has the specified name.

Parameters

- **study_name** – Study's name. Each study has a unique name as an identifier.
- **storage** – Database URL such as `sqlite:///example.db`. Please see also the documentation of `create_study()` for further details.

- **sampler** – A sampler object that implements background algorithm for value suggestion. If `None` is specified, `TPESampler` is used as the default. See also `samplers`.
- **pruner** – A pruner object that decides early stopping of unpromising trials. If `None` is specified, `MedianPruner` is used as the default. See also `pruners`.

`optuna.study.delete_study(study_name, storage)`

Delete a `Study` object.

Parameters

- **study_name** – Study’s name.
- **storage** – Database URL such as `sqlite:///example.db`. Please see also the documentation of `create_study()` for further details.

`optuna.study.get_all_study_summaries(storage)`

Get all history of studies stored in a specified storage.

Parameters **storage** – Database URL such as `sqlite:///example.db`. Please see also the documentation of `create_study()` for further details.

Returns List of study history summarized as `StudySummary` objects.

class `optuna.study.StudyDirection(value)`

Direction of a `Study`.

NOT_SET

Direction has not been set.

MINIMIZE

`Study` minimizes the objective function.

MAXIMIZE

`Study` maximizes the objective function.

class `optuna.study.StudySummary(study_name: str, direction: optuna.study.StudyDirection, best_trial: Optional[optuna.trial.FrozenTrial], user_attrs: Dict[str, Any], system_attrs: Dict[str, Any], n_trials: int, datetime_start: Optional[datetime.datetime], study_id: int)`

Basic attributes and aggregated results of a `Study`.

See also `optuna.study.get_all_study_summaries()`.

study_name

Name of the `Study`.

direction

`StudyDirection` of the `Study`.

best_trial

`FrozenTrial` with best objective value in the `Study`.

user_attrs

Dictionary that contains the attributes of the `Study` set with `optuna.study.Study.set_user_attr()`.

system_attrs

Dictionary that contains the attributes of the `Study` internally set by Optuna.

n_trials

The number of trials ran in the `Study`.

datetime_start

Datetime where the *Study* started.

property study_id

Return the study ID.

Deprecated since version 0.20.0: The direct use of this attribute is deprecated and it is recommended that you use *study_name* instead.

Returns The study ID.

6.3.13 Trial

class `optuna.trial.Trial` (*study*, *trial_id*)

A trial is a process of evaluating an objective function.

This object is passed to an objective function and provides interfaces to get parameter suggestion, manage the trial's state, and set/get user-defined attributes of the trial.

Note that the direct use of this constructor is not recommended. This object is seamlessly instantiated and passed to the objective function behind the `optuna.study.Study.optimize()` method; hence library users do not care about instantiation of this object.

Parameters

- **study** – A *Study* object.
- **trial_id** – A trial ID that is automatically generated.

property datetime_start

Return start datetime.

Returns Datetime where the *Trial* started.

property distributions

Return distributions of parameters to be optimized.

Returns A dictionary containing all distributions.

property number

Return trial's number which is consecutive and unique in a study.

Returns A trial number.

property params

Return parameters to be optimized.

Returns A dictionary containing all parameters.

report (*value*, *step*)

Report an objective function value for a given step.

The reported values are used by the pruners to determine whether this trial should be pruned.

See also:

Please refer to *BasePruner*.

Note: The reported value is converted to `float` type by applying `float()` function internally. Thus, it accepts all float-like types (e.g., `numpy.float32`). If the conversion fails, a `TypeError` is raised.

Example

Report intermediate scores of `SGDClassifier` training.

```
import optuna
from sklearn.linear_model import SGDClassifier

def objective(trial):
    clf = SGDClassifier(random_state=0)
    for step in range(100):
        clf.partial_fit(X_train, y_train, np.unique(y))
        intermediate_value = clf.score(X_test, y_test)
        trial.report(intermediate_value, step=step)
        if trial.should_prune():
            raise TrialPruned()

    return clf.score(X_test, y_test)

study = optuna.create_study(direction='maximize')
study.optimize(objective, n_trials=3)
```

Parameters

- **value** – A value returned from the objective function.
- **step** – Step of the trial (e.g., Epoch of neural network training).

`set_user_attr` (*key*, *value*)

Set user attributes to the trial.

The user attributes in the trial can be access via `optuna.trial.Trial.user_attrs()`.

Example

Save fixed hyperparameters of neural network training.

```
import optuna
from sklearn.neural_network import MLPClassifier

def objective(trial):
    trial.set_user_attr('BATCHSIZE', 128)
    momentum = trial.suggest_uniform('momentum', 0, 1.0)
    clf = MLPClassifier(hidden_layer_sizes=(100, 50),
                        batch_size=trial.user_attrs['BATCHSIZE'],
                        momentum=momentum, solver='sgd', random_state=0)
    clf.fit(X_train, y_train)

    return clf.score(X_test, y_test)

study = optuna.create_study(direction='maximize')
study.optimize(objective, n_trials=3)
assert 'BATCHSIZE' in study.best_trial.user_attrs.keys()
assert study.best_trial.user_attrs['BATCHSIZE'] == 128
```

Parameters

- **key** – A key string of the attribute.

- **value** – A value of the attribute. The value should be JSON serializable.

should_prune (*step=None*)

Suggest whether the trial should be pruned or not.

The suggestion is made by a pruning algorithm associated with the trial and is based on previously reported values. The algorithm can be specified when constructing a *Study*.

Note: If no values have been reported, the algorithm cannot make meaningful suggestions. Similarly, if this method is called multiple times with the exact same set of reported values, the suggestions will be the same.

See also:

Please refer to the example code in `optuna.trial.Trial.report()`.

Parameters **step** – Deprecated since 0.12.0: Step of the trial (e.g., epoch of neural network training). Deprecated in favor of always considering the most recent step.

Returns A boolean value. If **True**, the trial should be pruned according to the configured pruning algorithm. Otherwise, the trial should continue.

property **study_id**

Return the study ID.

Deprecated since version 0.20.0: The direct use of this attribute is deprecated and it is recommended that you use `study` instead.

Returns The study ID.

suggest_categorical (*name, choices*)

Suggest a value for the categorical parameter.

The value is sampled from `choices`.

Example

Suggest a kernel function of `SVC`.

```
import optuna
from sklearn.svm import SVC

def objective(trial):
    kernel = trial.suggest_categorical('kernel', ['linear', 'poly', 'rbf'])
    clf = SVC(kernel=kernel, gamma='scale', random_state=0)
    clf.fit(X_train, y_train)
    return clf.score(X_test, y_test)

study = optuna.create_study(direction='maximize')
study.optimize(objective, n_trials=3)
```

Parameters

- **name** – A parameter name.
- **choices** – Parameter value candidates.

See also:

CategoricalDistribution.

Returns A suggested value.

suggest_discrete_uniform (*name, low, high, q*)

Suggest a value for the discrete parameter.

The value is sampled from the range $[low, high]$, and the step of discretization is q . More specifically, this method returns one of the values in the sequence $low, low + q, low + 2q, \dots, low + kq \leq high$, where k denotes an integer. Note that *high* may be changed due to round-off errors if q is not an integer. Please check warning messages to find the changed values.

Example

Suggest a fraction of samples used for fitting the individual learners of `GradientBoostingClassifier`.

```
import optuna
from sklearn.ensemble import GradientBoostingClassifier

def objective(trial):
    subsample = trial.suggest_discrete_uniform('subsample', 0.1, 1.0, 0.1)
    clf = GradientBoostingClassifier(subsample=subsample, random_state=0)
    clf.fit(X_train, y_train)
    return clf.score(X_test, y_test)

study = optuna.create_study(direction='maximize')
study.optimize(objective, n_trials=3)
```

Parameters

- **name** – A parameter name.
- **low** – Lower endpoint of the range of suggested values. `low` is included in the range.
- **high** – Upper endpoint of the range of suggested values. `high` is included in the range.
- **q** – A step of discretization.

Returns A suggested float value.

suggest_float (*name, low, high, *, log=False, step=None*)

Suggest a value for the floating point parameter.

Note that this is a wrapper method for `suggest_uniform()`, `suggest_loguniform()` and `suggest_discrete_uniform()`.

New in version 1.3.0.

See also:

Please see also `suggest_uniform()`, `suggest_loguniform()` and `suggest_discrete_uniform()`.

Example

Suggest a momentum, learning rate and scaling factor of learning rate for neural network training.

```
def objective(trial):
    momentum = trial.suggest_float('momentum', 0.0, 1.0)
    learning_rate_init = trial.suggest_float('learning_rate_init',
                                             1e-5, 1e-3, log=True)
    power_t = trial.suggest_float('power_t', 0.2, 0.8, step=0.1)
    clf = MLPClassifier(hidden_layer_sizes=(100, 50), momentum=momentum,
                        learning_rate_init=learning_rate_init,
                        solver='sgd', random_state=0, power_t=power_t)
    clf.fit(X_train, y_train)

    return clf.score(X_test, y_test)

study = optuna.create_study(direction='maximize')
study.optimize(objective, n_trials=3)
```

Parameters

- **name** – A parameter name.
- **low** – Lower endpoint of the range of suggested values. `low` is included in the range.
- **high** – Upper endpoint of the range of suggested values. `high` is excluded from the range.
- **log** – A flag to sample the value from the log domain or not. If `log` is true, the value is sampled from the range in the log domain. Otherwise, the value is sampled from the range in the linear domain. See also `suggest_uniform()` and `suggest_loguniform()`.
- **step** – A step of discretization.

Returns A suggested float value.

suggest_int (*name, low, high, step=1*)

Suggest a value for the integer parameter.

The value is sampled from the integers in `[low, high]`.

Example

Suggest the number of trees in `RandomForestClassifier`.

```
import optuna
from sklearn.ensemble import RandomForestClassifier

def objective(trial):
    n_estimators = trial.suggest_int('n_estimators', 50, 400)
    clf = RandomForestClassifier(n_estimators=n_estimators, random_state=0)
    clf.fit(X_train, y_train)
    return clf.score(X_test, y_test)

study = optuna.create_study(direction='maximize')
study.optimize(objective, n_trials=3)
```

Parameters

- **name** – A parameter name.
- **low** – Lower endpoint of the range of suggested values. `low` is included in the range.
- **high** – Upper endpoint of the range of suggested values. `high` is included in the range.
- **step** – A step of spacing between values.

Returns A suggested integer value.

suggest_loguniform (*name, low, high*)

Suggest a value for the continuous parameter.

The value is sampled from the range `[low, high)` in the log domain. When `low = high`, the value of `low` will be returned.

Example

Suggest penalty parameter `C` of `SVC`.

```
import optuna
from sklearn.svm import SVC

def objective(trial):
    c = trial.suggest_loguniform('c', 1e-5, 1e2)
    clf = SVC(C=c, gamma='scale', random_state=0)
    clf.fit(X_train, y_train)
    return clf.score(X_test, y_test)

study = optuna.create_study(direction='maximize')
study.optimize(objective, n_trials=3)
```

Parameters

- **name** – A parameter name.
- **low** – Lower endpoint of the range of suggested values. `low` is included in the range.
- **high** – Upper endpoint of the range of suggested values. `high` is excluded from the range.

Returns A suggested float value.

suggest_uniform (*name, low, high*)

Suggest a value for the continuous parameter.

The value is sampled from the range `[low, high)` in the linear domain. When `low = high`, the value of `low` will be returned.

Example

Suggest a momentum for neural network training.

```
import optuna
from sklearn.neural_network import MLPClassifier

def objective(trial):
    momentum = trial.suggest_uniform('momentum', 0.0, 1.0)
    clf = MLPClassifier(hidden_layer_sizes=(100, 50), momentum=momentum,
                        solver='sgd', random_state=0)
    clf.fit(X_train, y_train)

    return clf.score(X_test, y_test)

study = optuna.create_study(direction='maximize')
study.optimize(objective, n_trials=3)
```

Parameters

- **name** – A parameter name.
- **low** – Lower endpoint of the range of suggested values. low is included in the range.
- **high** – Upper endpoint of the range of suggested values. high is excluded from the range.

Returns A suggested float value.

property user_attrs

Return user attributes.

Returns A dictionary containing all user attributes.

class `optuna.trial.FixedTrial` (*params*, *number=0*)

A trial class which suggests a fixed value for each parameter.

This object has the same methods as *Trial*, and it suggests pre-defined parameter values. The parameter values can be determined at the construction of the *FixedTrial* object. In contrast to *Trial*, *FixedTrial* does not depend on *Study*, and it is useful for deploying optimization results.

Example

Evaluate an objective function with parameter values given by a user.

```
import optuna

def objective(trial):
    x = trial.suggest_uniform('x', -100, 100)
    y = trial.suggest_categorical('y', [-1, 0, 1])
    return x ** 2 + y

assert objective(optuna.trial.FixedTrial({'x': 1, 'y': 0})) == 1
```

Note: Please refer to *Trial* for details of methods and properties.

Parameters

- **params** – A dictionary containing all parameters.
- **number** – A trial number. Defaults to 0.

```
class optuna.trial.FrozenTrial(number, state, value, datetime_start, datetime_complete,
                               params, distributions, user_attrs, system_attrs, intermedi-
                               ate_values, trial_id)
```

Status and results of a *Trial*.

number

Unique and consecutive number of *Trial* for each *Study*. Note that this field uses zero-based numbering.

state

TrialState of the *Trial*.

value

Objective value of the *Trial*.

datetime_start

Datetime where the *Trial* started.

datetime_complete

Datetime where the *Trial* finished.

params

Dictionary that contains suggested parameters.

user_attrs

Dictionary that contains the attributes of the *Trial* set with `optuna.trial.Trial.set_user_attr()`.

intermediate_values

Intermediate objective values set with `optuna.trial.Trial.report()`.

property distributions

Dictionary that contains the distributions of *params*.

property duration

Return the elapsed time taken to complete the trial.

Returns The duration.

```
class optuna.trial.TrialState(value)
```

State of a *Trial*.

RUNNING

The *Trial* is running.

COMPLETE

The *Trial* has been finished without any error.

PRUNED

The *Trial* has been pruned with *TrialPruned*.

FAIL

The *Trial* has failed due to an uncaught error.

6.3.14 Visualization

Note: `visualization` module uses `plotly` to create figures, but `JupyterLab` cannot render them by default. Please follow [this installation guide](#) to show figures in `JupyterLab`.

`optuna.visualization.plot_contour` (*study*, *params=None*)

Plot the parameter relationship as contour plot in a study.

Note that, If a parameter contains missing values, a trial with missing values is not plotted.

Example

The following code snippet shows how to plot the parameter relationship as contour plot.

```
import optuna

def objective(trial):
    x = trial.suggest_uniform('x', -100, 100)
    y = trial.suggest_categorical('y', [-1, 0, 1])
    return x ** 2 + y

study = optuna.create_study()
study.optimize(objective, n_trials=10)

optuna.visualization.plot_contour(study, params=['x', 'y'])
```

Parameters

- **study** – A `Study` object whose trials are plotted for their objective values.
- **params** – Parameter list to visualize. The default is all parameters.

Returns A `plotly.graph_objs.Figure` object.

`optuna.visualization.plot_intermediate_values` (*study*)

Plot intermediate values of all trials in a study.

Example

The following code snippet shows how to plot intermediate values.

```
import optuna

def f(x):
    return (x - 2) ** 2

def df(x):
    return 2 * x - 4

def objective(trial):
    lr = trial.suggest_loguniform("lr", 1e-5, 1e-1)

    x = 3
    for step in range(128):
```

(continues on next page)

(continued from previous page)

```

    y = f(x)

    trial.report(y, step=step)
    if trial.should_prune():
        raise optuna.exceptions.TrialPruned()

    gy = df(x)
    x -= gy * lr

    return y

study = optuna.create_study()
study.optimize(objective, n_trials=16)

optuna.visualization.plot_intermediate_values(study)

```

Parameters `study` – A `Study` object whose trials are plotted for their intermediate values.

Returns A `plotly.graph_objs.Figure` object.

`optuna.visualization.plot_optimization_history(study)`
 Plot optimization history of all trials in a study.

Example

The following code snippet shows how to plot optimization history.

```

import optuna

def objective(trial):
    x = trial.suggest_uniform('x', -100, 100)
    y = trial.suggest_categorical('y', [-1, 0, 1])
    return x ** 2 + y

study = optuna.create_study()
study.optimize(objective, n_trials=10)

optuna.visualization.plot_optimization_history(study)

```

Parameters `study` – A `Study` object whose trials are plotted for their objective values.

Returns A `plotly.graph_objs.Figure` object.

`optuna.visualization.plot_parallel_coordinate(study: optuna.study.Study, params: Optional[List[str]] = None) → go.Figure`

Plot the high-dimensional parameter relationships in a study.

Note that, If a parameter contains missing values, a trial with missing values is not plotted.

Example

The following code snippet shows how to plot the high-dimensional parameter relationships.

```
import optuna

def objective(trial):
    x = trial.suggest_uniform('x', -100, 100)
    y = trial.suggest_categorical('y', [-1, 0, 1])
    return x ** 2 + y

study = optuna.create_study()
study.optimize(objective, n_trials=10)

optuna.visualization.plot_parallel_coordinate(study, params=['x', 'y'])
```

Parameters

- **study** – A *Study* object whose trials are plotted for their objective values.
- **params** – Parameter list to visualize. The default is all parameters.

Returns A `plotly.graph_objs.Figure` object.

`optuna.visualization.plot_slice(study, params=None)`

Plot the parameter relationship as slice plot in a study.

Note that, If a parameter contains missing values, a trial with missing values is not plotted.

Example

The following code snippet shows how to plot the parameter relationship as slice plot.

```
import optuna

def objective(trial):
    x = trial.suggest_uniform('x', -100, 100)
    y = trial.suggest_categorical('y', [-1, 0, 1])
    return x ** 2 + y

study = optuna.create_study()
study.optimize(objective, n_trials=10)

optuna.visualization.plot_slice(study, params=['x', 'y'])
```

Parameters

- **study** – A *Study* object whose trials are plotted for their objective values.
- **params** – Parameter list to visualize. The default is all parameters.

Returns A `plotly.graph_objs.Figure` object.

`optuna.visualization.is_available()`

Returns whether visualization is available or not.

Note: `visualization` module depends on `plotly` version 4.0.0 or higher. If a supported version of `plotly` isn't installed in your environment, this function will return `False`. In such case, please execute `$ pip install -U plotly>=4.0.0` to install `plotly`.

Returns `True` if visualization is available, `False` otherwise.

6.4 FAQ

- *Can I use Optuna with X? (where X is your favorite ML library)*
- *How to define objective functions that have own arguments?*
- *Can I use Optuna without remote RDB servers?*
- *How can I save and resume studies?*
- *How to suppress log messages of Optuna?*
- *How to save machine learning models trained in objective functions?*
- *How can I obtain reproducible optimization results?*
- *How are exceptions from trials handled?*
- *How are NaNs returned by trials handled?*
- *What happens when I dynamically alter a search space?*
- *How can I use two GPUs for evaluating two trials simultaneously?*
- *How can I test my objective functions?*

6.4.1 Can I use Optuna with X? (where X is your favorite ML library)

Optuna is compatible with most ML libraries, and it's easy to use Optuna with those. Please refer to [examples](#).

6.4.2 How to define objective functions that have own arguments?

There are two ways to realize it.

First, callable classes can be used for that purpose as follows:

```
import optuna

class Objective(object):
    def __init__(self, min_x, max_x):
        # Hold this implementation specific arguments as the fields of the class.
        self.min_x = min_x
        self.max_x = max_x

    def __call__(self, trial):
        # Calculate an objective value by using the extra arguments.
```

(continues on next page)

(continued from previous page)

```

    x = trial.suggest_uniform('x', self.min_x, self.max_x)
    return (x - 2) ** 2

# Execute an optimization by using an `Objective` instance.
study = optuna.create_study()
study.optimize(Objective(-100, 100), n_trials=100)

```

Second, you can use `lambda` or `functools.partial` for creating functions (closures) that hold extra arguments. Below is an example that uses `lambda`:

```

import optuna

# Objective function that takes three arguments.
def objective(trial, min_x, max_x):
    x = trial.suggest_uniform('x', min_x, max_x)
    return (x - 2) ** 2

# Extra arguments.
min_x = -100
max_x = 100

# Execute an optimization by using the above objective function wrapped by `lambda`.
study = optuna.create_study()
study.optimize(lambda trial: objective(trial, min_x, max_x), n_trials=100)

```

Please also refer to `sklearn_additional_args.py` example.

6.4.3 Can I use Optuna without remote RDB servers?

Yes, it's possible.

In the simplest form, Optuna works with in-memory storage:

```

study = optuna.create_study()
study.optimize(objective)

```

If you want to save and resume studies, it's handy to use SQLite as the local storage:

```

study = optuna.create_study(study_name='foo_study', storage='sqlite:///example.db')
study.optimize(objective) # The state of `study` will be persisted to the local_
↳ SQLite file.

```

Please see *Saving/Resuming Study with RDB Backend* for more details.

6.4.4 How can I save and resume studies?

There are two ways of persisting studies, which depends if you are using in-memory storage (default) or remote databases (RDB). In-memory studies can be saved and loaded like usual Python objects using `pickle` or `joblib`. For example, using `joblib`:

```

study = optuna.create_study()
joblib.dump(study, 'study.pkl')

```

And to resume the study:

```

study = joblib.load('study.pkl')
print('Best trial until now:')
print(' Value: ', study.best_trial.value)
print(' Params: ')
for key, value in study.best_trial.params.items():
    print(f'    {key}: {value}')

```

If you are using RDBs, see *Saving/Resuming Study with RDB Backend* for more details.

6.4.5 How to suppress log messages of Optuna?

By default, Optuna shows log messages at the `optuna.logging.INFO` level. You can change logging levels by using `optuna.logging.set_verbosity()`.

For instance, you can stop showing each trial result as follows:

```

optuna.logging.set_verbosity(optuna.logging.WARNING)

study = optuna.create_study()
study.optimize(objective)
# Logs like '[I 2018-12-05 11:41:42,324] Finished a trial resulted in value:... ' are_
↳ disabled.

```

Please refer to `optuna.logging` for further details.

6.4.6 How to save machine learning models trained in objective functions?

Optuna saves hyperparameter values with its corresponding objective value to storage, but it discards intermediate objects such as machine learning models and neural network weights. To save models or weights, please use features of the machine learning library you used.

We recommend saving `optuna.trial.Trial.number` with a model in order to identify its corresponding trial. For example, you can save SVM models trained in the objective function as follows:

```

def objective(trial):
    svc_c = trial.suggest_loguniform('svc_c', 1e-10, 1e10)
    clf = sklearn.svm.SVC(C=svc_c)
    clf.fit(X_train, y_train)

    # Save a trained model to a file.
    with open('{} pickle'.format(trial.number), 'wb') as fout:
        pickle.dump(clf, fout)
    return 1.0 - accuracy_score(y_test, clf.predict(X_test))

study = optuna.create_study()
study.optimize(objective, n_trials=100)

# Load the best model.
with open('{} pickle'.format(study.best_trial.number), 'rb') as fin:
    best_clf = pickle.load(fin)
print(accuracy_score(y_test, best_clf.predict(X_test)))

```

6.4.7 How can I obtain reproducible optimization results?

To make the parameters suggested by Optuna reproducible, you can specify a fixed random seed via `seed` argument of `RandomSampler` or `TPESampler` as follows:

```
sampler = TPESampler(seed=10) # Make the sampler behave in a deterministic way.
study = optuna.create_study(sampler=sampler)
study.optimize(objective)
```

However, there are two caveats.

First, when optimizing a study in distributed or parallel mode, there is inherent non-determinism. Thus it is very difficult to reproduce the same results in such condition. We recommend executing optimization of a study sequentially if you would like to reproduce the result.

Second, if your objective function behaves in a non-deterministic way (i.e., it does not return the same value even if the same parameters were suggested), you cannot reproduce an optimization. To deal with this problem, please set an option (e.g., random seed) to make the behavior deterministic if your optimization target (e.g., an ML library) provides it.

6.4.8 How are exceptions from trials handled?

Trials that raise exceptions without catching them will be treated as failures, i.e. with the `FAIL` status.

By default, all exceptions except `TrialPruned` raised in objective functions are propagated to the caller of `optimize()`. In other words, studies are aborted when such exceptions are raised. It might be desirable to continue a study with the remaining trials. To do so, you can specify in `optimize()` which exception types to catch using the `catch` argument. Exceptions of these types are caught inside the study and will not propagate further.

You can find the failed trials in log messages.

```
[W 2018-12-07 16:38:36,889] Setting status of trial#0 as TrialState.FAIL because of \
the following error: ValueError('A sample error in objective.')
```

You can also find the failed trials by checking the trial states as follows:

```
study.trials_dataframe()
```

num-ber	state	value	...	params	system_attrs
0	Trial-State.FAIL		...	0	Setting status of trial#0 as TrialState.FAIL because of the following error: ValueError('A test error in objective.')
1	Trial-State.COMPLETE	1269	...	1	

See also:

The `catch` argument in `optimize()`.

6.4.9 How are NaNs returned by trials handled?

Trials that return NaN (`float('nan')`) are treated as failures, but they will not abort studies.

Trials which return NaN are shown as follows:

```
[W 2018-12-07 16:41:59,000] Setting status of trial#2 as TrialState.FAIL because the \
objective function returned nan.
```

6.4.10 What happens when I dynamically alter a search space?

Since parameters search spaces are specified in each call to the suggestion API, e.g. `suggest_uniform()` and `suggest_int()`, it is possible to in a single study alter the range by sampling parameters from different search spaces in different trials. The behavior when altered is defined by each sampler individually.

Note: Discussion about the TPE sampler. <https://github.com/optuna/optuna/issues/822>

6.4.11 How can I use two GPUs for evaluating two trials simultaneously?

If your optimization target supports GPU (CUDA) acceleration and you want to specify which GPU is used, the easiest way is to set `CUDA_VISIBLE_DEVICES` environment variable:

```
# On a terminal.
#
# Specify to use the first GPU, and run an optimization.
$ export CUDA_VISIBLE_DEVICES=0
$ optuna study optimize foo.py objective --study foo --storage sqlite:///example.db

# On another terminal.
#
# Specify to use the second GPU, and run another optimization.
$ export CUDA_VISIBLE_DEVICES=1
$ optuna study optimize bar.py objective --study bar --storage sqlite:///example.db
```

Please refer to [CUDA C Programming Guide](#) for further details.

6.4.12 How can I test my objective functions?

When you test objective functions, you may prefer fixed parameter values to sampled ones. In that case, you can use `FixedTrial`, which suggests fixed parameter values based on a given dictionary of parameters. For instance, you can input arbitrary values of x and y to the objective function $x + y$ as follows:

```
def objective(trial):
    x = trial.suggest_uniform('x', -1.0, 1.0)
    y = trial.suggest_int('y', -5, 5)
    return x + y

objective(FixedTrial({'x': 1.0, 'y': -1})) # 0.0
objective(FixedTrial({'x': -1.0, 'y': -4})) # -5.0
```

Using `FixedTrial`, you can write unit tests as follows:

```
# A test function of pytest
def test_objective():
    assert 1.0 == objective(FixedTrial({'x': 1.0, 'y': 0}))
    assert -1.0 == objective(FixedTrial({'x': 0.0, 'y': -1}))
    assert 0.0 == objective(FixedTrial({'x': -1.0, 'y': 1}))
```

INDICES AND TABLES

- genindex
- modindex
- search

PYTHON MODULE INDEX

O

- `optuna.distributions`, 29
- `optuna.exceptions`, 31
- `optuna.importance`, 32
- `optuna.integration`, 33
- `optuna.logging`, 43
- `optuna.multi_objective`, 45
- `optuna.multi_objective.samplers`, 45
- `optuna.multi_objective.study`, 47
- `optuna.multi_objective.trial`, 49
- `optuna.pruners`, 51
- `optuna.samplers`, 58
- `optuna.storages`, 66
- `optuna.structs`, 67
- `optuna.study`, 69
- `optuna.trial`, 74
- `optuna.visualization`, 81

Symbols

- allow-websocket-origin
 <BOKEH_ALLOW_WEBSOCKET_ORIGINS>
 optuna-dashboard command line
 option, 27
- column COLUMN
 optuna-studies command line option,
 28
- debug
 optuna command line option, 26
- direction <DIRECTION>
 optuna-create-study command line
 option, 26
- fit-width
 optuna-studies command line option,
 28
- format <FORMATTER>
 optuna-studies command line option,
 28
- key <KEY>
 optuna-study-set-user-attr command
 line option, 29
- log-file <LOG_FILE>
 optuna command line option, 26
- max-width <integer>
 optuna-studies command line option,
 28
- n-jobs <N_JOBS>
 optuna-study-optimize command line
 option, 29
- n-trials <N_TRIALS>
 optuna-study-optimize command line
 option, 28
- noindent
 optuna-studies command line option,
 28
- out <OUT>
 optuna-dashboard command line
 option, 27
- print-empty
 optuna-studies command line option,
 28
- quiet
 optuna command line option, 26
- quote <QUOTE_MODE>
 optuna-studies command line option,
 28
- skip-if-exists
 optuna-create-study command line
 option, 27
- sort-column SORT_COLUMN
 optuna-studies command line option,
 28
- storage <STORAGE>
 optuna command line option, 26
- study <STUDY>
 optuna-dashboard command line
 option, 27
 optuna-study-optimize command line
 option, 29
 optuna-study-set-user-attr command
 line option, 29
- study-name <STUDY_NAME>
 optuna-create-study command line
 option, 26
 optuna-delete-study command line
 option, 27
- timeout <TIMEOUT>
 optuna-study-optimize command line
 option, 28
- value <VALUE>
 optuna-study-set-user-attr command
 line option, 29
- verbose
 optuna command line option, 26
- version
 optuna command line option, 26
- c COLUMN
 optuna-studies command line option,
 28
- f <FORMATTER>
 optuna-studies command line option,
 28
- k <KEY>

optuna-study-set-user-attr command line option, 29

-o <OUT>
optuna-dashboard command line option, 27

-q
optuna command line option, 26

-v
optuna command line option, 26

-v <VALUE>
optuna-study-set-user-attr command line option, 29

A

AllenNLPExecutor (class in *optuna.integration*), 43

B

BaseMultiObjectiveSampler (class in *optuna.multi_objective.samplers*), 45

BasePruner (class in *optuna.pruners*), 52

BaseSampler (class in *optuna.samplers*), 58

best_estimator_ (optuna.integration.OptunaSearchCV attribute), 40

best_index_() (optuna.integration.OptunaSearchCV property), 41

best_params() (optuna.study.Study property), 69

best_params_() (optuna.integration.OptunaSearchCV property), 41

best_score_() (optuna.integration.OptunaSearchCV property), 41

best_trial (optuna.structs.StudySummary attribute), 68

best_trial (optuna.study.StudySummary attribute), 73

best_trial() (optuna.study.Study property), 69

best_trial_() (optuna.integration.OptunaSearchCV property), 41

best_value() (optuna.study.Study property), 69

C

calculate() (optuna.samplers.IntersectionSearchSpace method), 65

CategoricalDistribution (class in *optuna.distributions*), 30

ChainerMNNStudy (class in *optuna.integration*), 34

ChainerPruningExtension (class in *optuna.integration*), 33

check_distribution_compatibility() (in module *optuna.distributions*), 31

choices (*optuna.distributions.CategoricalDistribution attribute*), 30

classes_() (optuna.integration.OptunaSearchCV property), 41

CLIUsageError (class in *optuna.exceptions*), 32

CmaEsSampler (class in *optuna.integration*), 34

CmaEsSampler (class in *optuna.samplers*), 64

COMPLETE (optuna.structs.TrialState attribute), 67

COMPLETE (optuna.trial.TrialState attribute), 81

create_study() (in module *optuna.multi_objective.study*), 48

create_study() (in module *optuna.study*), 72

D

datetime_complete (optuna.multi_objective.trial.FrozenMultiObjectiveTrial attribute), 51

datetime_complete (optuna.structs.FrozenTrial attribute), 68

datetime_complete (optuna.trial.FrozenTrial attribute), 81

datetime_start (optuna.multi_objective.trial.FrozenMultiObjectiveTrial attribute), 51

datetime_start (optuna.structs.FrozenTrial attribute), 68

datetime_start (optuna.structs.StudySummary attribute), 69

datetime_start (optuna.study.StudySummary attribute), 73

datetime_start (optuna.trial.FrozenTrial attribute), 81

datetime_start() (optuna.multi_objective.trial.MultiObjectiveTrial property), 49

datetime_start() (optuna.trial.Trial property), 74

decision_function() (optuna.integration.OptunaSearchCV property), 41

delete_study() (in module *optuna.study*), 73

direction (optuna.structs.StudySummary attribute), 68

direction (optuna.study.StudySummary attribute), 73

direction() (optuna.study.Study property), 69

directions() (optuna.multi_objective.study.MultiObjectiveStudy property), 47

disable_default_handler() (in module *optuna.logging*), 44

disable_propagation() (in module *optuna.logging*), 44

DiscreteUniformDistribution (class in *optuna.distributions*), 30

distribution_to_json() (in module *optuna.distributions*), 31

- distributions (optuna.multi_objective.trial.FrozenMultiObjectiveTrial attribute), 51
- distributions() (optuna.multi_objective.trial.MultiObjectiveTrial property), 49
- distributions() (optuna.structs.FrozenTrial property), 68
- distributions() (optuna.trial.FrozenTrial property), 81
- distributions() (optuna.trial.Trial property), 74
- dump_best_config() (in module optuna.integration.allennlp), 43
- DuplicatedStudyError (class in optuna.exceptions), 32
- duration() (optuna.structs.FrozenTrial property), 68
- duration() (optuna.trial.FrozenTrial property), 81
- ## E
- enable_default_handler() (in module optuna.logging), 44
- enable_propagation() (in module optuna.logging), 44
- enqueue_trial() (optuna.multi_objective.study.MultiObjectiveStudy method), 47
- enqueue_trial() (optuna.study.Study method), 69
- evaluate() (optuna.importance.FanovaImportanceEvaluator method), 33
- ## F
- FAIL (optuna.structs.TrialState attribute), 67
- FAIL (optuna.trial.TrialState attribute), 81
- FanovaImportanceEvaluator (class in optuna.importance), 33
- FastAIPruningCallback (class in optuna.integration), 35
- file
 optuna-study-optimize command line option, 29
- fit() (optuna.integration.OptunaSearchCV method), 41
- FixedTrial (class in optuna.trial), 80
- FrozenMultiObjectiveTrial (class in optuna.multi_objective.trial), 51
- FrozenTrial (class in optuna.structs), 68
- FrozenTrial (class in optuna.trial), 81
- ## G
- get_all_study_summaries() (in module optuna.study), 73
- get_param_importances() (in module optuna.importance), 32
- get_pareto_front_trials() (optuna.multi_objective.study.MultiObjectiveStudy method), 47
- get_trials() (optuna.multi_objective.study.MultiObjectiveStudy method), 47
- get_trials() (optuna.study.Study method), 70
- get_verbosity() (in module optuna.logging), 43
- GridSampler (class in optuna.samplers), 60
- ## H
- high (optuna.distributions.DiscreteUniformDistribution attribute), 30
- high (optuna.distributions.IntUniformDistribution attribute), 30
- high (optuna.distributions.LogUniformDistribution attribute), 29
- high (optuna.distributions.UniformDistribution attribute), 29
- HyperbandPruner (class in optuna.pruners), 55
- hyperopt_parameters() (optuna.samplers.TPESampler static method), 63
- ## I
- infer_relative_search_space() (optuna.multi_objective.samplers.BaseMultiObjectiveSampler method), 45
- infer_relative_search_space() (optuna.samplers.BaseSampler method), 59
- intermediate_values (optuna.multi_objective.trial.FrozenMultiObjectiveTrial attribute), 51
- intermediate_values (optuna.structs.FrozenTrial attribute), 68
- intermediate_values (optuna.trial.FrozenTrial attribute), 81
- intersection_search_space() (in module optuna.samplers), 65
- IntersectionSearchSpace (class in optuna.samplers), 65
- IntUniformDistribution (class in optuna.distributions), 30
- inverse_transform() (optuna.integration.OptunaSearchCV property), 42
- is_available() (in module optuna.visualization), 84
- ## J
- json_to_distribution() (in module optuna.distributions), 31
- ## K
- KerasPruningCallback (class in optuna.integration), 36

L

LightGBMPruningCallback (class in *optuna.integration*), 36
 load_study() (in module *optuna.multi_objective.study*), 49
 load_study() (in module *optuna.study*), 72
 LogUniformDistribution (class in *optuna.distributions*), 29
 low (*optuna.distributions.DiscreteUniformDistribution* attribute), 30
 low (*optuna.distributions.IntUniformDistribution* attribute), 30
 low (*optuna.distributions.LogUniformDistribution* attribute), 29
 low (*optuna.distributions.UniformDistribution* attribute), 29

M

MAXIMIZE (*optuna.structs.StudyDirection* attribute), 67
 MAXIMIZE (*optuna.study.StudyDirection* attribute), 73
 MedianPruner (class in *optuna.pruners*), 52
 method
 optuna-study-optimize command line option, 29
 MINIMIZE (*optuna.structs.StudyDirection* attribute), 67
 MINIMIZE (*optuna.study.StudyDirection* attribute), 73
 MLflowCallback (class in *optuna.integration*), 36
 module
 optuna.distributions, 29
 optuna.exceptions, 31
 optuna.importance, 32
 optuna.integration, 33
 optuna.logging, 43
 optuna.multi_objective, 45
 optuna.multi_objective.samplers, 45
 optuna.multi_objective.study, 47
 optuna.multi_objective.trial, 49
 optuna.pruners, 51
 optuna.samplers, 58
 optuna.storages, 66
 optuna.structs, 67
 optuna.study, 69
 optuna.trial, 74
 optuna.visualization, 81

MultiObjectiveStudy (class in *optuna.multi_objective.study*), 47
 MultiObjectiveTrial (class in *optuna.multi_objective.trial*), 49
 MXNetPruningCallback (class in *optuna.integration*), 37

N

n_objectives() (*optuna.multi_objective.study.MultiObjectiveStudy*

property), 47
 n_splits_ (*optuna.integration.OptunaSearchCV* attribute), 41
 n_trials (*optuna.structs.StudySummary* attribute), 69
 n_trials (*optuna.study.StudySummary* attribute), 73
 n_trials_() (*optuna.integration.OptunaSearchCV* property), 42
 NopPruner (class in *optuna.pruners*), 53
 NOT_SET (*optuna.structs.StudyDirection* attribute), 67
 NOT_SET (*optuna.study.StudyDirection* attribute), 73
 number (*optuna.multi_objective.trial.FrozenMultiObjectiveTrial* attribute), 51
 number (*optuna.structs.FrozenTrial* attribute), 68
 number (*optuna.trial.FrozenTrial* attribute), 81
 number() (*optuna.multi_objective.trial.MultiObjectiveTrial* property), 50
 number() (*optuna.trial.Trial* property), 74

O

optimize() (*optuna.integration.ChainerMNStudy* method), 34
 optimize() (*optuna.multi_objective.study.MultiObjectiveStudy* method), 47
 optimize() (*optuna.study.Study* method), 70
 optuna command line option
 --debug, 26
 --log-file <LOG_FILE>, 26
 --quiet, 26
 --storage <STORAGE>, 26
 --verbose, 26
 --version, 26
 -q, 26
 -v, 26
optuna.distributions
 module, 29
optuna.exceptions
 module, 31
optuna.importance
 module, 32
optuna.integration
 module, 33
optuna.logging
 module, 43
optuna.multi_objective
 module, 45
optuna.multi_objective.samplers
 module, 45
optuna.multi_objective.study
 module, 47
optuna.multi_objective.trial
 module, 49
optuna.pruners
 module, 51
optuna.samplers

module, 58
 optuna.storages
 module, 66
 optuna.structs
 module, 67
 optuna.study
 module, 69
 optuna.trial
 module, 74
 optuna.visualization
 module, 81
 optuna-create-study command line
 option
 --direction <DIRECTION>, 26
 --skip-if-exists, 27
 --study-name <STUDY_NAME>, 26
 optuna-dashboard command line option
 --allow-websocket-origin
 <BOKEH_ALLOW_WEBSOCKET_ORIGINS>,
 27
 --out <OUT>, 27
 --study <STUDY>, 27
 -o <OUT>, 27
 optuna-delete-study command line
 option
 --study-name <STUDY_NAME>, 27
 optuna-studies command line option
 --column COLUMN, 28
 --fit-width, 28
 --format <FORMATTER>, 28
 --max-width <integer>, 28
 --noindent, 28
 --print-empty, 28
 --quote <QUOTE_MODE>, 28
 --sort-column SORT_COLUMN, 28
 -c COLUMN, 28
 -f <FORMATTER>, 28
 optuna-study-optimize command line
 option
 --n-jobs <N_JOBS>, 29
 --n-trials <N_TRIALS>, 28
 --study <STUDY>, 29
 --timeout <TIMEOUT>, 28
 file, 29
 method, 29
 optuna-study-set-user-attr command
 line option
 --key <KEY>, 29
 --study <STUDY>, 29
 --value <VALUE>, 29
 -k <KEY>, 29
 -v <VALUE>, 29
 OptunaError (class in *optuna.exceptions*), 31
 OptunaSearchCV (class in *optuna.integration*), 39

P

params (*optuna.multi_objective.trial.FrozenMultiObjectiveTrial*
 attribute), 51
 params (*optuna.structs.FrozenTrial* attribute), 68
 params (*optuna.trial.FrozenTrial* attribute), 81
 params () (*optuna.multi_objective.trial.MultiObjectiveTrial*
 property), 50
 params () (*optuna.trial.Trial* property), 74
 PercentilePruner (class in *optuna.pruners*), 53
 plot_contour () (in module *optuna.visualization*), 82
 plot_intermediate_values () (in module *op-*
tuna.visualization), 82
 plot_optimization_history () (in module *op-*
tuna.visualization), 83
 plot_parallel_coordinate () (in module *op-*
tuna.visualization), 83
 plot_slice () (in module *optuna.visualization*), 84
 predict () (*optuna.integration.OptunaSearchCV* prop-
 erty), 42
 predict_log_proba () (op-
 tuna.integration.OptunaSearchCV property),
 42
 predict_proba () (op-
 tuna.integration.OptunaSearchCV property),
 42
 prune () (*optuna.pruners.BasePruner* method), 52
 PRUNED (*optuna.structs.TrialState* attribute), 67
 PRUNED (*optuna.trial.TrialState* attribute), 81
 PyTorchIgnitePruningHandler (class in *op-*
tuna.integration), 36
 PyTorchLightningPruningCallback (class in
 optuna.integration), 37

Q

q (*optuna.distributions.DiscreteUniformDistribution* at-
 tribute), 30

R

RandomMultiObjectiveSampler (class in *op-*
tuna.multi_objective.samplers), 46
 RandomSampler (class in *optuna.samplers*), 61
 RDBStorage (class in *optuna.storages*), 66
 RedisStorage (class in *optuna.storages*), 66
 refit_time_ (*optuna.integration.OptunaSearchCV*
 attribute), 41
 report () (*optuna.multi_objective.trial.MultiObjectiveTrial*
 method), 50
 report () (*optuna.trial.Trial* method), 74
 reseed_rng () (*optuna.integration.CmaEsSampler*
 method), 35
 reseed_rng () (*optuna.integration.SkoptSampler*
 method), 38
 reseed_rng () (*optuna.samplers.BaseSampler*
 method), 60

`reseed_rng()` (*optuna.samplers.CmaEsSampler* method), 65
`reseed_rng()` (*optuna.samplers.RandomSampler* method), 62
`reseed_rng()` (*optuna.samplers.TPESampler* method), 63
`run()` (*optuna.integration.AllenNLPExecutor* method), 43
`RUNNING` (*optuna.structs.TrialState* attribute), 67
`RUNNING` (*optuna.trial.TrialState* attribute), 81

S

`sample_independent()` (*optuna.multi_objective.samplers.BaseMultiObjectiveSampler* method), 45
`sample_independent()` (*optuna.samplers.BaseSampler* method), 60
`sample_indices_` (*optuna.integration.OptunaSearchCV* attribute), 41
`sample_relative()` (*optuna.multi_objective.samplers.BaseMultiObjectiveSampler* method), 46
`sample_relative()` (*optuna.samplers.BaseSampler* method), 60
`sampler()` (*optuna.multi_objective.study.MultiObjectiveStudy* property), 48
`score()` (*optuna.integration.OptunaSearchCV* method), 42
`score_samples()` (*optuna.integration.OptunaSearchCV* property), 42
`scorer_` (*optuna.integration.OptunaSearchCV* attribute), 41
`set_user_attr()` (*optuna.integration.OptunaSearchCV* property), 42
`set_user_attr()` (*optuna.multi_objective.study.MultiObjectiveStudy* method), 48
`set_user_attr()` (*optuna.multi_objective.trial.MultiObjectiveTrial* method), 50
`set_user_attr()` (*optuna.study.Study* method), 71
`set_user_attr()` (*optuna.trial.Trial* method), 75
`set_verbosity()` (in module *optuna.logging*), 44
`should_prune()` (*optuna.trial.Trial* method), 76
`single()` (*optuna.distributions.CategoricalDistribution* method), 30
`single()` (*optuna.distributions.DiscreteUniformDistribution* method), 30
`single()` (*optuna.distributions.IntUniformDistribution* method), 30
`single()` (*optuna.distributions.LogUniformDistribution* method), 29
`single()` (*optuna.distributions.UniformDistribution* method), 29
`SkoptSampler` (class in *optuna.integration*), 38
`state` (*optuna.multi_objective.trial.FrozenMultiObjectiveTrial* attribute), 51
`state` (*optuna.structs.FrozenTrial* attribute), 68
`state` (*optuna.trial.FrozenTrial* attribute), 81
`step` (*optuna.distributions.IntUniformDistribution* attribute), 30
`StorageInternalError` (class in *optuna.exceptions*), 32
`Study` (class in *optuna.study*), 69
`study_` (*optuna.integration.OptunaSearchCV* attribute), 41
`study_id()` (*optuna.structs.StudySummary* property), 69
`study_id()` (*optuna.study.Study* property), 71
`study_id()` (*optuna.study.StudySummary* property), 74
`study_id()` (*optuna.trial.Trial* property), 76
`study_name` (*optuna.structs.StudySummary* attribute), 68
`study_name` (*optuna.study.StudySummary* attribute), 73
`StudyDirection` (class in *optuna.structs*), 67
`StudyDirection` (class in *optuna.study*), 73
`StudySummary` (class in *optuna.structs*), 68
`StudySummary` (class in *optuna.study*), 73
`SuccessiveHalvingPruner` (class in *optuna.pruners*), 54
`suggest_categorical()` (*optuna.multi_objective.trial.MultiObjectiveTrial* method), 50
`suggest_categorical()` (*optuna.trial.Trial* method), 76
`suggest_discrete_uniform()` (*optuna.multi_objective.trial.MultiObjectiveTrial* method), 50
`suggest_discrete_uniform()` (*optuna.trial.Trial* method), 77
`suggest_float()` (*optuna.multi_objective.trial.MultiObjectiveTrial* method), 50
`suggest_float()` (*optuna.trial.Trial* method), 77
`suggest_int()` (*optuna.multi_objective.trial.MultiObjectiveTrial* method), 50
`suggest_int()` (*optuna.trial.Trial* method), 78
`suggest_loguniform()` (*optuna.multi_objective.trial.MultiObjectiveTrial* method), 50
`suggest_loguniform()` (*optuna.trial.Trial* method), 77

method), 79
 suggest_uniform() (optuna.multi_objective.trial.MultiObjectiveTrial method), 51
 suggest_uniform() (optuna.trial.Trial method), 79
 system_attrs (optuna.structs.StudySummary attribute), 68
 system_attrs (optuna.study.StudySummary attribute), 73

T

TensorFlowPruningHook (class in optuna.integration), 39
 TFKerasPruningCallback (class in optuna.integration), 39
 ThresholdPruner (class in optuna.pruners), 57
 TPESampler (class in optuna.samplers), 62
 train() (in module optuna.integration.lightgbm), 36
 transform() (optuna.integration.OptunaSearchCV property), 42
 Trial (class in optuna.trial), 74
 TrialPruned (class in optuna.exceptions), 31
 trials() (optuna.multi_objective.study.MultiObjectiveStudy property), 48
 trials() (optuna.study.Study property), 71
 trials_() (optuna.integration.OptunaSearchCV property), 42
 trials_dataframe() (optuna.integration.OptunaSearchCV property), 42
 trials_dataframe() (optuna.study.Study method), 71
 TrialState (class in optuna.structs), 67
 TrialState (class in optuna.trial), 81

U

UniformDistribution (class in optuna.distributions), 29
 user_attrs (optuna.multi_objective.trial.FrozenMultiObjectiveTrial attribute), 51
 user_attrs (optuna.structs.FrozenTrial attribute), 68
 user_attrs (optuna.structs.StudySummary attribute), 68
 user_attrs (optuna.study.StudySummary attribute), 73
 user_attrs (optuna.trial.FrozenTrial attribute), 81
 user_attrs() (optuna.multi_objective.study.MultiObjectiveStudy property), 48
 user_attrs() (optuna.multi_objective.trial.MultiObjectiveTrial property), 51
 user_attrs() (optuna.study.Study property), 72
 user_attrs() (optuna.trial.Trial property), 80
 user_attrs_() (optuna.integration.OptunaSearchCV property),

43

V

value (optuna.structs.FrozenTrial attribute), 68
 value (optuna.trial.FrozenTrial attribute), 81
 values (optuna.multi_objective.trial.FrozenMultiObjectiveTrial attribute), 51

X

XGBoostPruningCallback (class in optuna.integration), 39