



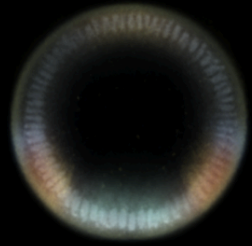
The  
Embryo  
Digital  
Atlas

The Embryo Digital Atlas is a web based platform for curious citizens, students and scientists, to visualize complex experimental datasets of embryogenesis in an easy and beautiful way.

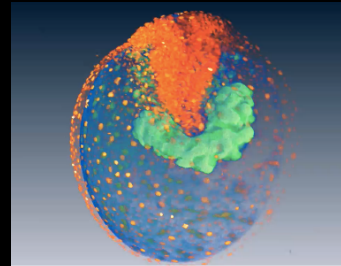
# Navigate among datasets

## Explore

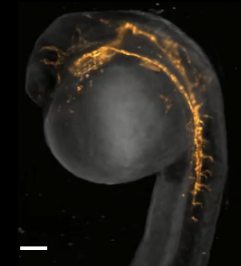
---



Cross section of developing  
*Drosophila melanogaster*



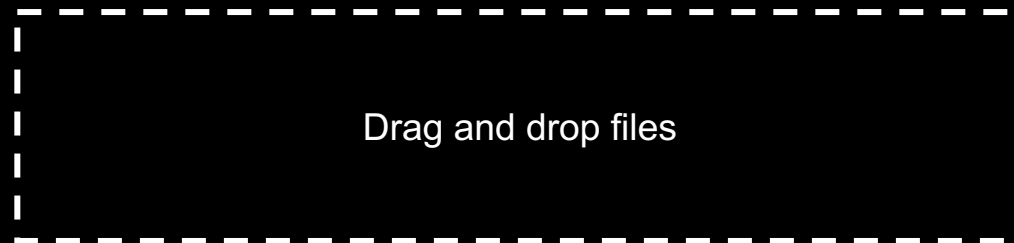
Zebrafish development –  
oep staining and nuclei



Zebrafish development – Bright  
field and Central Nervous System

## Upload your own

---



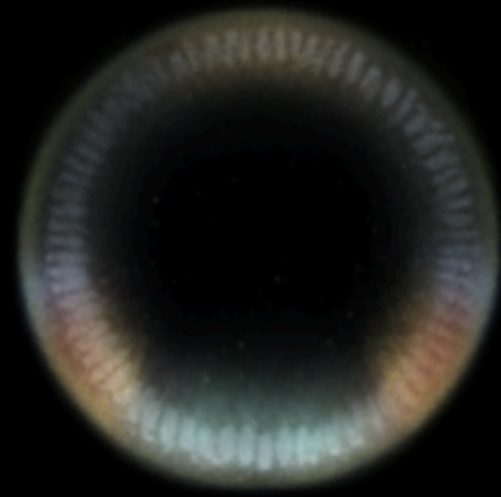
From path

- Private Usage
- Share publicly

How many channels? How many time steps?

Description of the dataset

- organism
- period of development
- View/microscopy technique



[Legend - Colors](#)

[Legend - Keys](#)

[More Information about the dataset – Popup style](#)

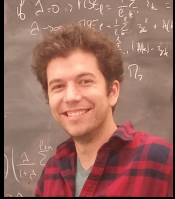
[Reference](#)

[Get DOI](#)

[Make Public](#)

[More Information & Github & Link to contributors](#)

# Acknowledgments – Team – Contributors



Paul Villoutreix



Jérôme Le Lan



Sam Galison



Jaime Tanner



Anne Luther



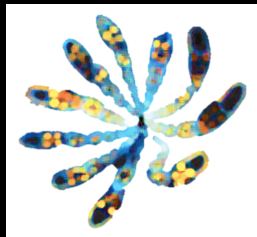
Alissa Nedossekina



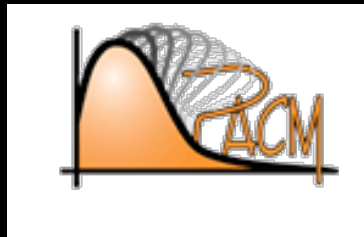
Aurelia Moser



Joakim Andén



Princeton University  
Shvartsman Lab



Princeton University  
Applied and Computational Mathematics

