

**DAIKIN**



# INSTALLATION AND OPERATION MANUAL


**Daikin Configurator v2.\*\***

**Contents**


	Page
1. Definitions.....	1
1.1. Meaning of warnings and symbols .....	1
1.2. Meaning of used terms .....	1
2. General safety precautions.....	2
3. Introduction.....	2
3.1. General information .....	2
3.2. Features without connection to the unit (offline).....	2
3.3. Features when connected to the unit .....	2
Summary of features for Daikin Altherma low temperature heat pumps .....	3
Summary of features for VRV IV outdoor units .....	4
4. Minimum requirements .....	5
4.1. Connection cable .....	5
4.2. PC requirements.....	5
5. Software installation .....	5
6. Connecting the EKPCAB* USB cable to the unit.....	6
7. Operation procedure.....	6
7.1. First startup of the Daikin Configurator .....	6
7.2. Overview of the Daikin Configurator screen (example for heating).....	8
7.3. Quick guide how to create and upload a settings file .....	9
7.4. Quick guide how to download a settings file and copy to another unit .....	9
8. Details of operations.....	10
8.1. Application category/autodetect selection .....	10
8.2. Select appliance .....	10
8.3. Create/edit settings (offline).....	10
8.4. Uploading/downloading languages and settings .....	11
9. Troubleshooting.....	12
9.1. Manual EKPCAB* driver installation .....	13
9.2. Uninstalling the Daikin Configurator .....	13

Thank you for purchasing this Daikin product.

The original instructions are written in English. All other languages are translations of the original instructions.

 CAREFULLY READ THESE INSTRUCTIONS BEFORE INSTALLATION. THEY WILL TELL YOU HOW TO INSTALL AND USE THE DAIKIN CONFIGURATOR PROPERLY. KEEP THIS MANUAL IN A HANDY PLACE FOR FUTURE REFERENCE.

THIS IS AN OPTION TO BE USED IN COMBINATION WITH DAIKIN UNITS. REFER TO THE INSTALLATION AND OPERATION MANUAL OF THE UNITS FOR INSTALLATION AND OPERATION INSTRUCTIONS.

 This appliance is not intended for use by persons, including children, with reduced physical, sensory or mental capabilities, or lack of experience and knowledge, unless they have been given supervision or instruction concerning use of the appliance by a person responsible for their safety. Children shall be supervised to ensure that they do not play with the appliance.



**WARNING**

Before operating the Daikin Configurator, be sure the installation has been carried out correctly by an installer. If you feel unsure about operation, contact your installer for advice and information.

**1. Definitions**

**1.1. Meaning of warnings and symbols**

Warnings in this manual are classified according to their severity and probability of occurrence.



**DANGER**

Indicates an imminently hazardous situation which, if not avoided, will result in death or serious injury.



**WARNING**

Indicates a potentially hazardous situation which, if not avoided, could result in death or serious injury.



**CAUTION**

Indicates a potentially hazardous situation which, if not avoided, may result in minor or moderate injury. It may also be used to alert against unsafe practices.



**NOTICE**

Indicates situations that may result in equipment or property-damage accidents only.



**INFORMATION**

This symbol identifies useful tips or additional information. Some types of danger are represented by special symbols:



Electric current.



Danger of burning and scalding.

**1.2. Meaning of used terms**

**Installation manual:**

Instruction manual specified for a certain product or application, explaining how to install, configure and maintain it.

**Operation manual:**

Instruction manual specified for a certain product or application, explaining how to operate it.

**Dealer:**

Sales distributor for products as per the subject of this manual.

**Installer:**

Technical skilled person who is qualified to install products as per the subject of this manual.

#### User:

Person who is owner of the product and/or operates the product.

#### Accessories:

Equipment which is delivered with the unit and which needs to be installed according to instructions in the documentation.

#### Optional equipment:

Equipment which can optionally be combined to the products as per the subject of this manual.

## 2. General safety precautions

The precautions listed here are divided into the following four types. They all cover very important topics, so be sure to follow them carefully.



### DANGER: ELECTRICAL SHOCK

Switch off all power supply before removing the switchbox service panel or before making any connections or touching electrical parts.

Do not touch any switch with wet fingers. Touching a switch with wet fingers can cause electrical shock. Before touching electrical parts, turn off all applicable power supply.

To avoid electric shock, be sure to disconnect the power supply 1 minute or more before servicing the electrical parts. Even after 1 minute, always measure the voltage at the terminals of main circuit capacitors or electrical parts and, before touching, be sure that those voltages are 50 V DC or less.

When service panels are removed, live parts can easily be touched by accident. Never leave the unit unattended during installation or servicing when the service panel is removed.



### DANGER: DO NOT TOUCH PIPING AND INTERNAL PARTS

Do not touch the refrigerant piping, water piping or internal parts during and immediately after operation. The piping and internal parts may be hot or cold depending on the working condition of the unit.

Your hand may suffer burns or frostbite if you touch the piping or internal parts. To avoid injury, give the piping and internal parts time to return to normal temperature or, if you must touch them, be sure to wear protective gloves.

## 3. Introduction

The Daikin Configurator software is intended to be used in combination with the **EKPCAB\*** USB cable.



### INFORMATION

The latest available Daikin Configurator software can be downloaded from the website:  
**<http://www.daikineurope.com/support-and-manuals/software-downloads/>**

As the functionality of the Daikin Configurator relies on an up to date internal database, ensure to upgrade to the latest Daikin Configurator software before making actual connection to the unit.

### 3.1. General information

This manual concerns the Daikin Configurator v2.\*.\* for configuring following appliance:

- the Daikin Altherma low temperature heat pumps
- the VRV IV outdoor units.

See next pages for an overview of the possibilities.

### 3.2. Features without connection to the unit (offline)

- Depending on an appliance selection, settings files can be created.
- For each setting a help text description is available. The description is available in different languages.
- The settings can be exported to a csv-file (**csv = comma-separated values**). A csv-file can be opened in Microsoft Excel.

### 3.3. Features when connected to the unit

- Auto-detect of unit type is possible.
- By uploading, it is possible to modify settings and user interface languages of the unit (availability depending on unit type).
- By downloading, it is possible to download the settings from the unit and consult all settings on the PC screen. These settings will include editable and read-only settings. Once the settings are downloaded it is possible to copy the editable settings (the read-only settings are not copied) to another unit (within the same unit type).

# Summary of features for Daikin Altherma low temperature heat pumps

## A. Daikin Configurator functions

- Configuration of the settings. For each setting a help text description is available. This description is available in different languages.
- Changing the language on the user interface.
- For applicable models and settings that can be modified, please refer to the datasheet available on internet.

## B. Daikin Configurator files

- \*.set-file: settings file
- \*.dwn-file: downloaded file with settings
- \*.bin-file: language file

### **i** INFORMATION

#### For Daikin Altherma low temperature heat pumps

- 1 **Unit dependent settings:** The \*.set-file contains 6 settings that are unit dependent. The values should match the unit type:

- [6-03]
- [6-04]
- [5-0D]
- [E-05]
- [E-07]
- [E-08]

When making a new \*.set-file, these settings will be by default "ignored during upload". This means that the present unit dependent settings will NOT be modified during upload.

**Consequence:** When copying settings to different unit types, it is advised to keep the "ignored during upload" selection for these unit dependent settings. This means that this file can be copied between different models.

- 2 **Conditional settings:** The \*.set-file also contains conditional settings, for example:

- [4-02] value for condition "\*04/08\* models"  
[4-02] value for condition "\*16\* models"
- [6-0E] value for condition "[E-07]=0"  
[6-0E] value for condition "[E-07]=1"

Different values for different models can be set and both values are uploaded to the unit. Depending on the condition, the correct value will automatically be used and displayed by the unit.

In general, it is advised to first configure the settings in the "A. Installer settings" menu. The settings in other menus are visible or not depending on the settings you made in the "A. Installer settings" menu.

### **i** INFORMATION

A \*.dwn-file will contain all settings (including unit dependent settings). This means that the \*.dwn-file may only be uploaded to the same type of unit.

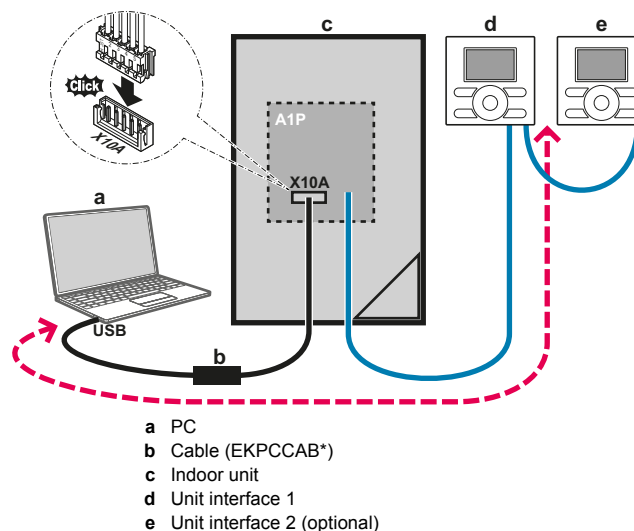
In case the settings must be copied to a different unit type:

- 1 Open the \*.dwn-file and save as \*.set-file.
  - 2 Change the "set during upload
- "ignored during upload

## C. Example: Connecting the Daikin Configurator to the Daikin Altherma low temperature heat pumps

Connecting the EKPCAB\* USB cable to the Daikin Altherma low temperature heat pump has to be done on A1P. Connect the EKPCAB\* USB cable to the 5-pin blue connector X10A.

Connect the other end of the EKPCAB\* USB cable to the USB port of the PC.



## D. User interface display

- 1 Display when busy up-/downloading to/from the unit.



### **i** INFORMATION

During upload/download, the progress bar will go several times from empty state to maximum state.

- 2 Display when finished.

### **i** INFORMATION

Outer border is blinking.





**INFORMATION**

Outer border is blinking.

Unit interface 1



Unit interface 2



**INFORMATION**

**Connecting to the Daikin Configurator**

Please see instruction in each individual unit installation manual.

# Summary of features for VRV IV outdoor units

## A. Daikin Configurator functions

- Configuration of the settings. For each setting a help text description is available. This description is available in different languages.
- Changing the language on the user interface.
- For applicable models and settings that can be modified, please refer to the datasheet available on internet.

## B. Daikin Configurator files

- \*.set-file: settings file
- \*.dwn-file: downloaded file with settings



**INFORMATION**

**For VRV IV outdoor units**

The \*.set-file and \*.dwn-file do NOT contain unit dependent settings and can be copied between different models.

## C. Example: Connecting the Daikin Configurator to the VRV IV outdoor units

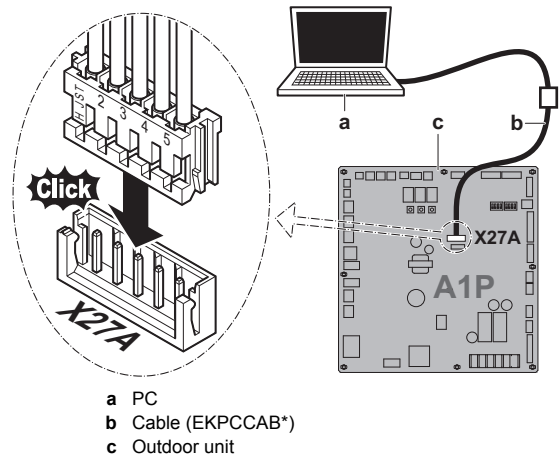
Connecting the **EKPCCAB\*** USB cable to the outdoor unit has to be done on A1P. Connect the **EKPCCAB\*** USB cable to the 5-pin blue connector X27A.

Connect the other end of the **EKPCCAB\*** USB cable to the USB port of the PC.



**CAUTION**

Works executed on the outdoor unit are best done under dry weather conditions to avoid water ingress.



**INFORMATION**

**Connecting to the Daikin Configurator**

Please see instruction in each individual unit installation manual.

## 4. Minimum requirements

### 4.1. Connection cable

The Daikin Configurator software can only be used in combination with **EKPCCAB\*** USB cable. This hardware product is designed and certified for following conditions:

- IP class: IPX0,
- altitude up to 2000 m,
- ambient temperature range (when electrified): -25°C to 65°C
- ambient temperature range (when not electrified): -25°C to 65°C,
- maximum relative humidity of 95% at 40°C,
- mains supply fluctuation up to ±10% of the nominal voltage,
- transient overvoltages typically present on the mains supply - **overvoltage category II**,
- temporary overvoltages occurring on the mains supply,
- applicable environment rated **pollution degree 2**.



#### CAUTION

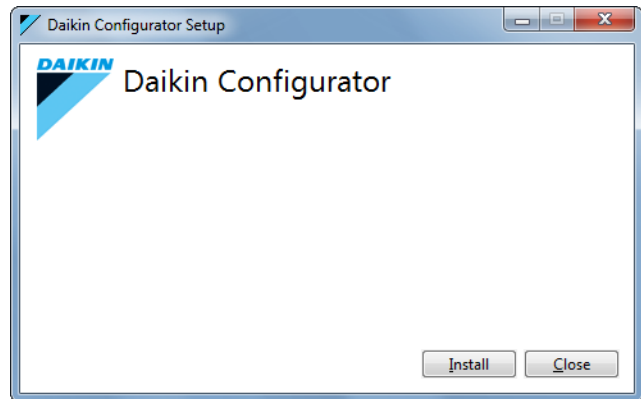
- Do not clean the equipment with solvents or other cleaning agents.
- Do not soak the equipment in water or other fluid
- Use of a damp cloth for cleaning is permitted, avoid water ingress

### 4.2. PC requirements

- Windows XP (SP2), Windows Vista (SP2), Windows 7 or Windows 8/8.1
- Microsoft .NET Framework 2.0 and 4.0
- Pentium III 400 MHz or faster
- Free USB 2.0 port, capable of supplying 50 mA current
- Minimum display resolution 1024×768

## 5. Software installation

- 1 Go to <http://www.daikineurope.com/support-and-manuals/software-downloads/> and click the link "Download Software" under Configurator Software. Unzip/unpack the downloaded package and start by double clicking on the \*.exe file. This will start the installation program. Click "Install".



#### INFORMATION

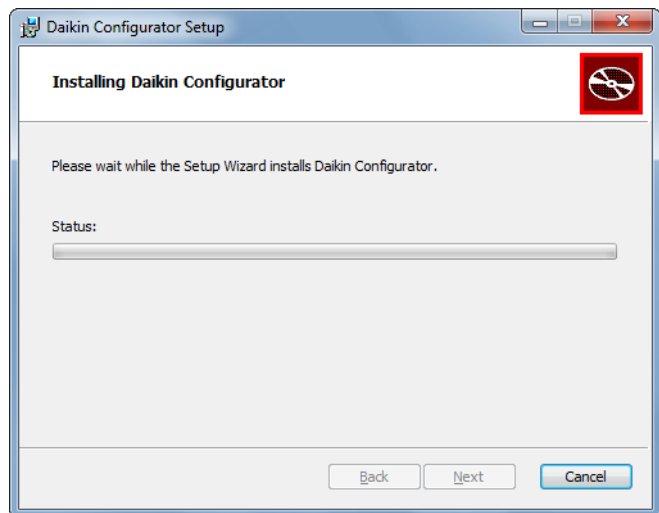
When another version of the Daikin Configurator is already installed on your PC, the new version will first uninstall the previous version.

- 2 Select "I accept the terms in the License Agreement" after reading and agreeing with the license agreement and click "Install".

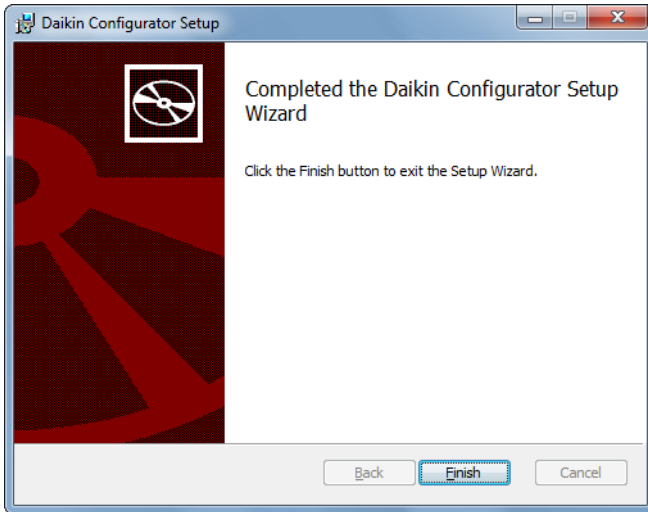


#### INFORMATION

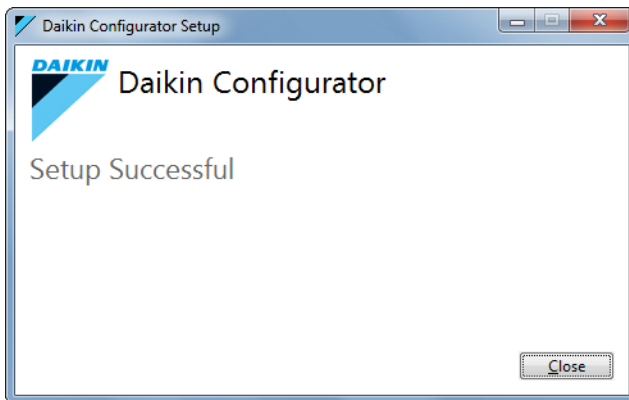
By default the installation location is in the user directory:  
Example: C:\Users\Me\AppData\Local\Daikin Europe NV\Daikin Configurator



- Click "Finish".



- Click "Close".



The installation has been completed. The program is now available in Start/Programs/Daikin/Daikin Configurator.

## 6. Connecting the EKPCAB\* USB cable to the unit

Refer to the installation and operation manual of the unit and installation manual of the EKPCAB\* USB cable for correct connection.

For more information see the example described in ["Summary of features for Daikin Altherma low temperature heat pumps"](#) on page 3 and ["Summary of features for VRV IV outdoor units"](#) on page 4.

## 7. Operation procedure

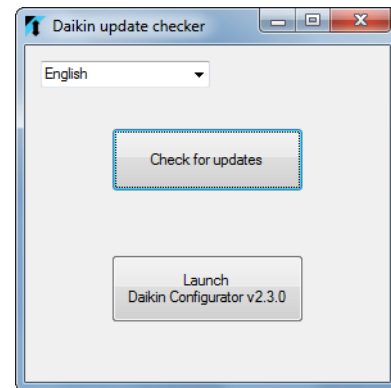
### 7.1. First startup of the Daikin Configurator



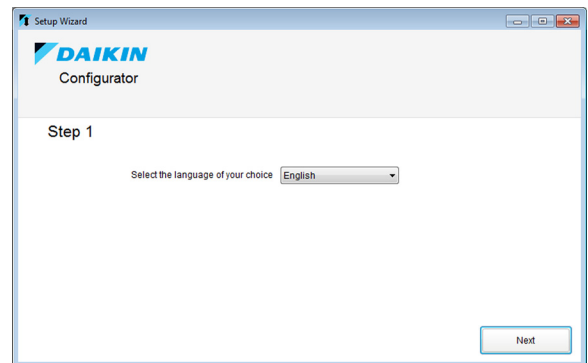
#### NOTICE

Check that the EKPCAB\* USB cable is correctly connected to the PC and the unit.

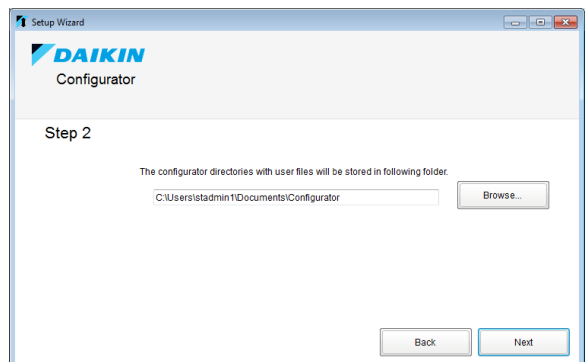
- Navigate to Start/Programs/Daikin/Daikin Configurator and click "Daikin Configurator" to start the Daikin Configurator.
- Daikin Update Checker:
  - Select your language.
  - In case an internet connection is available, click "Check for updates" and follow the instructions.
  - To startup the configurator click "Launch Daikin Configurator v2.x.x".



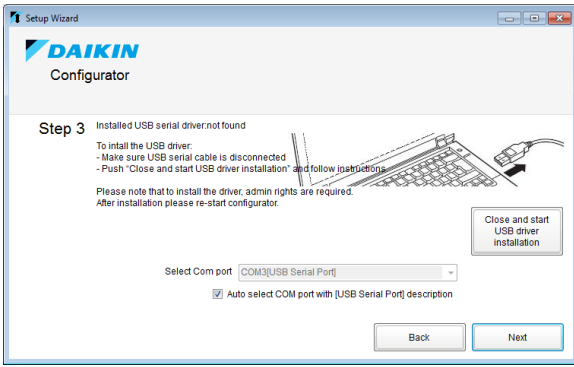
- Setup Wizard (step 1): it is possible to select the language. Click "Next".



- Setup Wizard (Step 2): Click "Browse" and choose the location where you want to store the Configurator directories with user files. Click "Next".

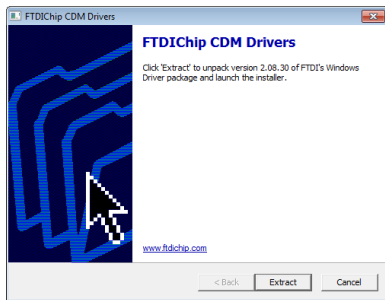


- 5 Setup Wizard (Step 3): By default the "Auto select COM port with [USB Serial Port] description" box is automatically selected.



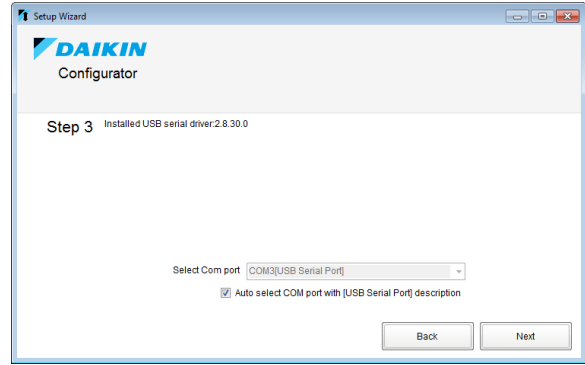
**i** INFORMATION

In case no USB driver is found, it is possible to "Close and start USB driver installation". After this the driver installation program will start. Please follow the instructions.



Please note that to install the driver, admin rights are required. After installation the USB cable can be plugged into the PC. After this please restart the configurator.

In case a USB driver is already installed.

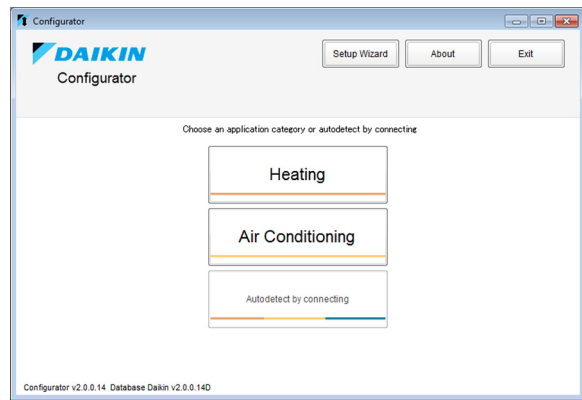


**i** INFORMATION

In case manual selection is required, it is possible to uncheck the "Auto select COM port with [USB Serial Port] description" box.

Click "Next".

- 6 Setup wizard is finished and the "Category" main screen is displayed.







### 7.3. Quick guide how to create and upload a settings file

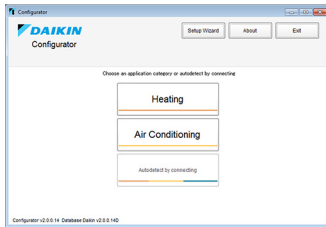


#### CAUTION

Do NOT interrupt the upload process by disconnecting the connection cable or turning off the power. Daikin cannot be held responsible for malfunctions due to interrupted uploads.

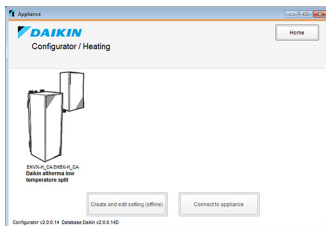
- 1 Choose the desired application category.

STEP 1



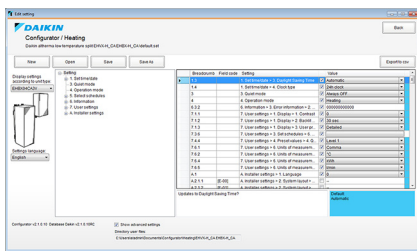
- 2 Select the unit by clicking on the picture of the unit. The unit will highlight. Click now on "Create and edit setting (offline)".

STEP 2



- 3 Create (see also "8.3. Create/edit settings (offline)" on page 10) and save the desired settings (\*.set). Click "Back".

STEP 3



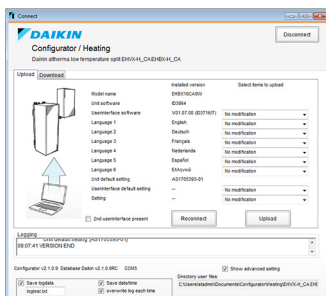
- 4 Connect **EKPCAB\*** USB cable and power on the unit. Click "Connect to appliance".

STEP 4



- 5 Select the Upload sheet, select the created settings and click "Upload".

STEP 5



- 6 When upload is finished, power off the unit. Disconnect the **EKPCAB\*** USB cable.

For more detailed information on these steps, see "8. Details of operations" on page 10.

### 7.4. Quick guide how to download a settings file and copy to another unit

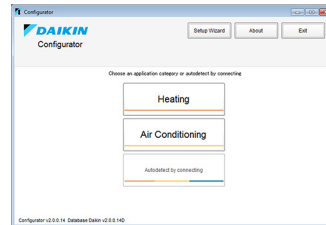
- 1 Connect the **EKPCAB\*** USB cable and power on the unit.
- 2 Choose the desired application category.



#### INFORMATION

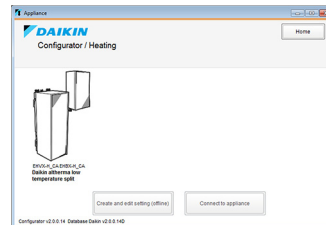
When selecting "Autodetect by connecting" you immediately shift to Step 4.

STEP 2



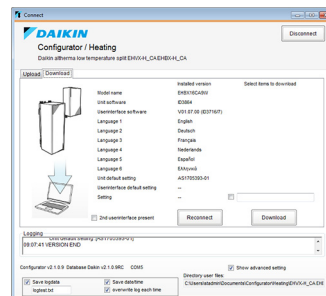
- 3 Select the unit by clicking on the picture of the unit. The unit will highlight. Click now on "Connect to appliance".

STEP 3



- 4 Select Download sheet, select to which settings file (\*.dwn) to be downloaded and click "Download".

STEP 4

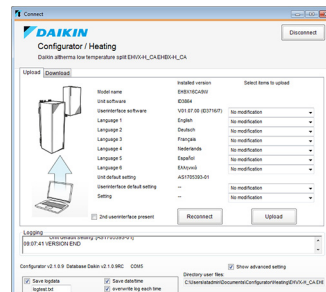


- 5 When download is finished, power off the unit and disconnect the **EKPCAB\*** USB cable from the unit.

- 6 Connect the **EKPCAB\*** USB cable and power on to the other unit.

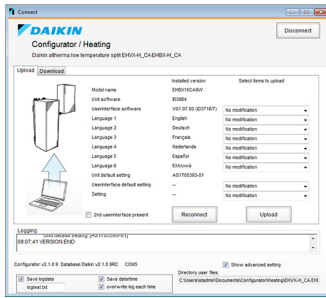
- 7 Select the Upload sheet and click "Reconnect".

STEP 7



- 8 Select the downloaded settings (\*.dwn) and click "Upload".

## STEP 8



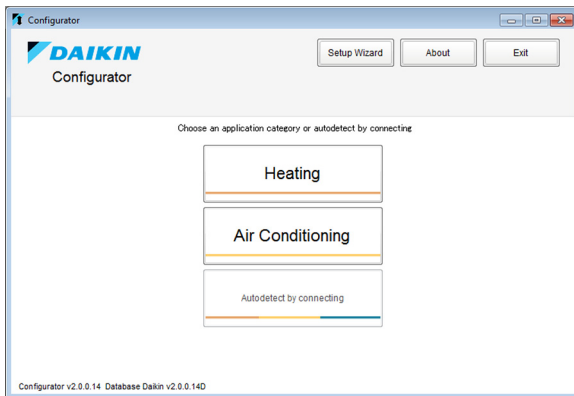
- 9 When download is finished, power off the unit. Disconnect the EKPCAB\* USB cable.

For more detailed information on these steps, see "8. Details of operations" on page 10.

## 8. Details of operations

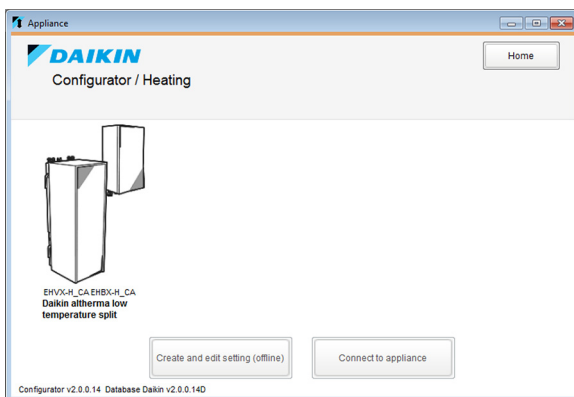
### 8.1. Application category/autodetect selection

- Click the desired application category ("Heating" or "Air conditioning") to manually select the unit.
- By clicking "Autodetect by connecting" the unit is automatically detected and the Daikin Configurator automatically shifts to the upload/download display (see "8.4.1. Upload" on page 11).



### 8.2. Select appliance

- 1 Select the desired appliance.
- 2 Click "Create and edit settings (offline)" to create or edit settings or "Connect to appliance" to upload/download settings.



## 8.3. Create/edit settings (offline)

- 1 Click "New" to create new settings or "Open" to edit existing settings.



### INFORMATION

When clicking "Open", a dialog box will appear. Select the settings file you want to edit.



### INFORMATION

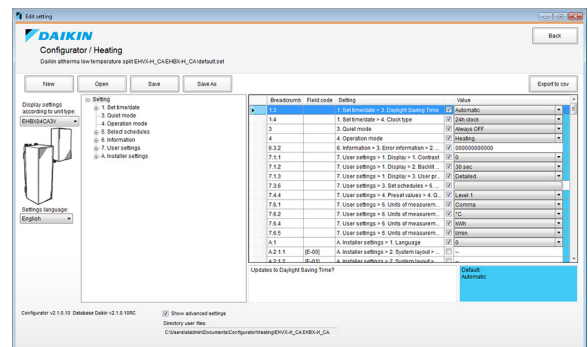
When opening downloaded settings (\*.dwn), some parameters are read-only.

- 2 Select the different setting parameters and fill in the information to create the desired settings.



### INFORMATION

By selecting the "Show advanced settings" checkbox, it is possible to read out the directory of the user files.



### INFORMATION

Selection field: "Display settings according to appliance and unit type" for conditional settings (only for a \*.set-file).

See Conditional settings on page 3.

For Daikin Altherma low temperature heat pumps, the settings file (\*.set) contains different conditional settings. Only the applicable conditional settings for the selected unit type will be shown.

### Example:

- [4-02] with condition \*04/08\* models
- [4-02] with condition \*16\* models

Only 1 of the 2 settings above is shown on the screen, depending on the selection.

The values for both conditional settings are saved in the same file.

Remark: "Display settings according to appliance and unit type" is not available when opening a \*.dwn-file. The conditional settings are displayed according to the unit type from which the settings were downloaded.

Remark: "Display settings according to appliance and unit type" is only to show or hide conditional settings on the screen. It does NOT change the settings. This is similar to an actual user interface.



### INFORMATION

For each setting:

- Setting will be ignored during upload.
- Setting will be set during upload.

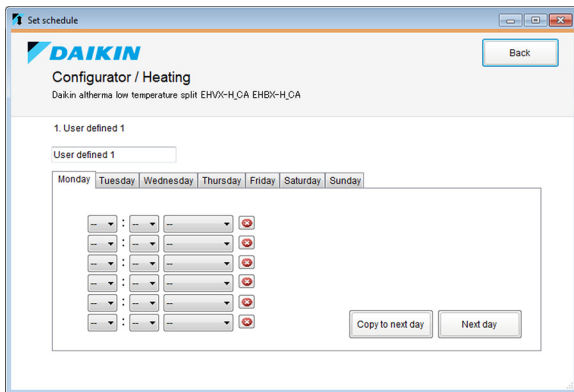
## INFORMATION

For each setting:

- If last cell has NO colour: the value is not the same as the default value.
- If the last cell is blue: the value is the same as the default value.
- Blue cell with text "Default": the value is the default value.

## INFORMATION

For Daikin Altherma low temperature heat pumps, to edit or program schedule timers a dedicated dialog box will appear.



- 3 Click "Save" or "Save As" to save the settings.

## INFORMATION

By clicking "Export to csv" you can export the settings to a csv-file (csv=comma separated values). A \*.csv file can be opened in Microsoft Excel.

## 8.4. Uploading/downloading languages and settings

- 1 Connect the EKPCAB\* USB cable.
- 2 Power on the unit.

### 8.4.1. Upload

#### CAUTION

Do NOT interrupt the upload process by disconnecting the connection cable or turning off the power. Daikin cannot be held responsible for malfunctions due to interrupted uploads.

- 1 Select the tab "Upload".
- 2 Installed versions will be displayed. Reconnect in case failed.
- 3 Select the languages/settings you want to upload for the slots.

## INFORMATION

Available possibilities depend on the connected unit.

## INFORMATION

Available items to upload in the dropdown list:

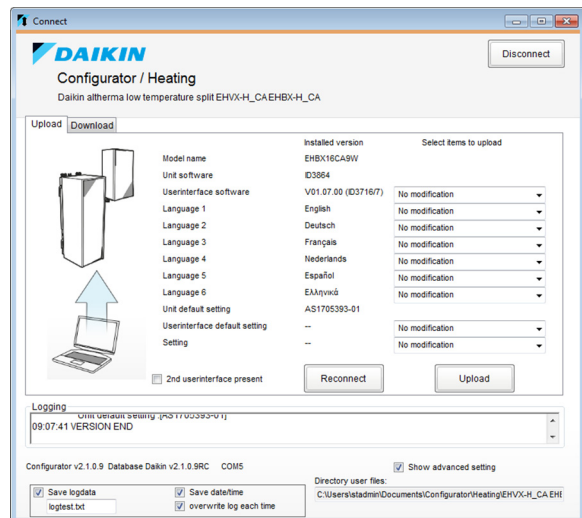
- files available in the configurator database,
- files available in the users directory of the selected appliance.


## INFORMATION

By selecting the "Show advanced settings" checkbox you have the possibility to read out the directory of the user files and consult the logging parameters. By default, ALL actions are recorded in a log file stored in the directory of the user files. You can choose following options:

- "Save logdata": if selected, a logfile will be created to which all actions will be recorded. The log filename can be modified.
- "Save date/time": if selected, the date and time of each action will be saved in the logfile.
- "Overwrite log each time": if not selected, for each new operation, the actions will be appended to the same logfile. If selected, the file will be overwritten at each operation.

- 4 Click "Upload" to upload the selected languages and settings to the unit.



- 5 The display of the user interface (only for Daikin Altherma low temperature heat pumps) shows the progress screen when busy uploading. 
- 6 After finish of uploading the outer border will start blinking on the screen. Power reset is necessary.

### 8.4.2. Download

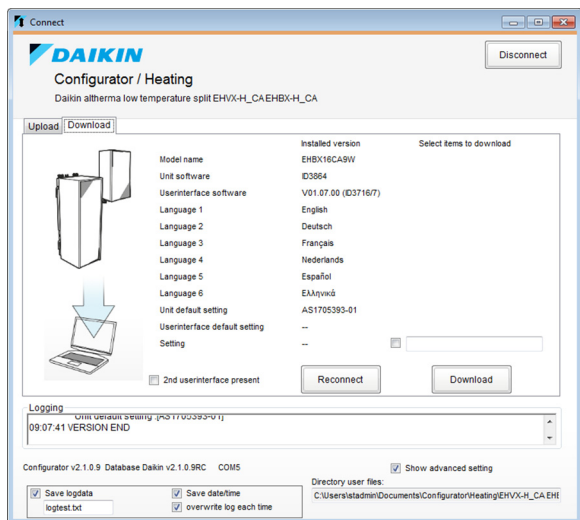
- 1 Select the tab "Download".
- 2 Select the "Settings" checkbox if you want to download the settings from the unit.



#### INFORMATION

For advanced settings, see ["8.4.1. Upload" on page 11.](#)


- 3 Click "Download" to download the selected languages and settings from the unit.



#### INFORMATION

**Only for Daikin Altherma low temperature heat pumps.**

In case of a 2 user interface set-up, select "2nd user interface present".

- 4 The display of the user interface (only for Daikin Altherma low temperature heat pumps) shows the progress screen when busy downloading. 
- 5 After finish of uploading the outer border will start blinking on the screen. Power reset is necessary.

## 9. Troubleshooting

#### Problem:

The COM port [USB Serial Port] is not available in the COM port settings window.

#### Solution:

- 1 Check if the **EKPCCAB\*** USB cable is connected correctly to a free USB port of the PC.
- 2 If the **EKPCCAB\*** USB cable is connected correctly and the COM port is still not available, then the driver is not installed correctly. Follow procedure ["9.1. Manual EKPCCAB\\* driver installation" on page 13.](#)

#### Problem:

The uploading/downloading is not started. The log file mentions: <<<ERROR>>>.

#### Solution:

- 1 Check if the COM port settings are OK.
- 2 Check if the **EKPCCAB\*** USB cable is connected correctly to the USB port of PC and the connector on the PCB of the unit as instructed in the installation manual of the applicable unit.
- 3 Check if the unit is electrically powered.

#### Problem:

Running the Daikin configurator on windows 7 results in some text on the screen that is only partly visible.

#### Solution:

Check the selected size of text (Control panel/Display). Size of text 125% should be modified to 100% or 150%.

#### Problem:

Opening the exported csv-file in Excel results in strange characters on the screen.

#### Solution:

- 1 Open Excel
- 2 Open file
- 3 Set "file of type" to csv
- 4 Open selected csv-file
- 5 Make sure import setting "(UTF) Unicode" is selected (with delimited "Semicolon").

#### Problem:

Uploading a setting file results in the following logging error message: <<<ERROR - Product information in the file is different from the target appliance.>>>.

#### Solution:

In case the target appliance is correct but you need to upload setting files (\*.set + \*.dwn) created with previous configurator versions (≤v2.1.0), you can only proceed uploading with Configurator v2.2.0 (or newer) after a once-only opening and saving the files in the "Edit setting" window of Configurator v2.2.0 (or newer).

## 9.1. Manual EKPCAB\* driver installation

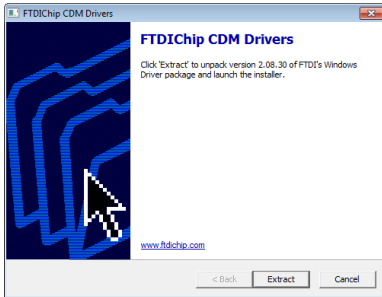
Only in case normal installation procedure has failed, manual driver installation can be done as follows:

- 1 Disconnect the USB cable. Close the Daikin Configurator software.
- 2 Navigate to the application folder. In this example:  
C:\Program Files\Daikin Europe NV\Daikin Configurator\  
EKPCAB\* driver\

### INFORMATION

The application folder depends on the chosen installation location (see "5. Software installation" on page 5).

- 3 Start "CDM v2.08.30 WHQL Certified.exe" and follow the instructions.



- 4 When finished connect the EKPCAB\* USB cable.
- 5 Start the Daikin Configurator software. The COM port should now be available.

## 9.2. Uninstalling the Daikin Configurator

### 9.2.1. For Windows XP

- 1 Open Add/Remove Programs by clicking the Start button, clicking Settings, clicking Control Panel and select "Add/Remove Programs".
- 2 Select the Daikin Configurator in the list and click "Remove".
- 3 The Daikin Configurator software will be removed from your PC.

### 9.2.2. For Windows Vista or Windows 7

- 1 Open Programs and Features by clicking the Start button, clicking Control Panel, clicking Programs, and then clicking Programs and Features.
- 2 Select the Daikin Configurator in the list and click "Uninstall".
- 3 The Daikin Configurator software will be removed from your PC.

