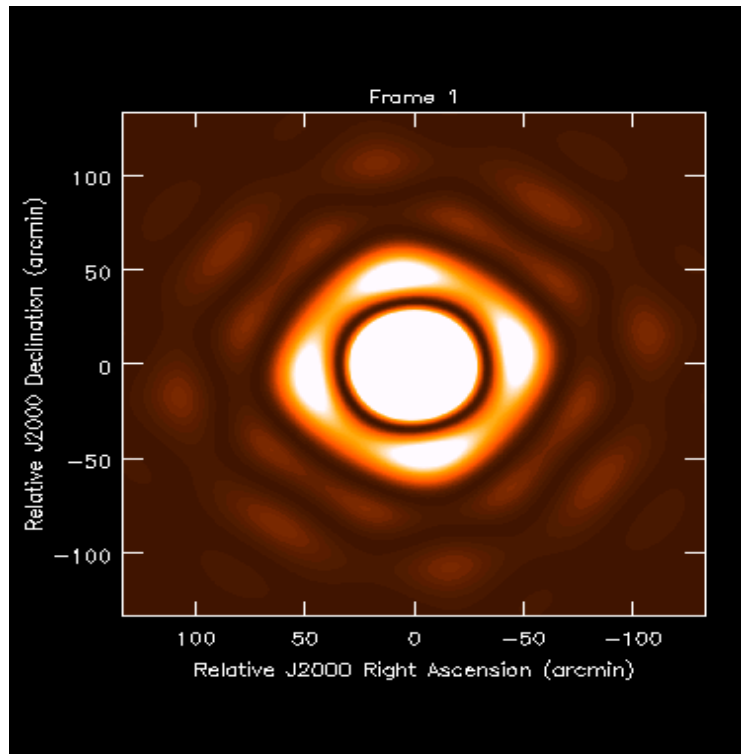
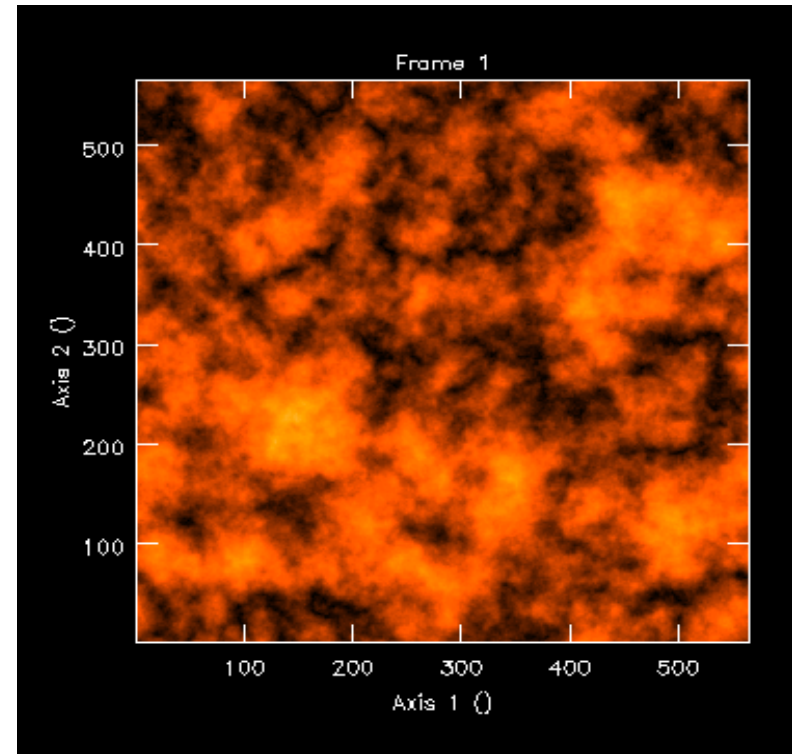


Examples of DD effects

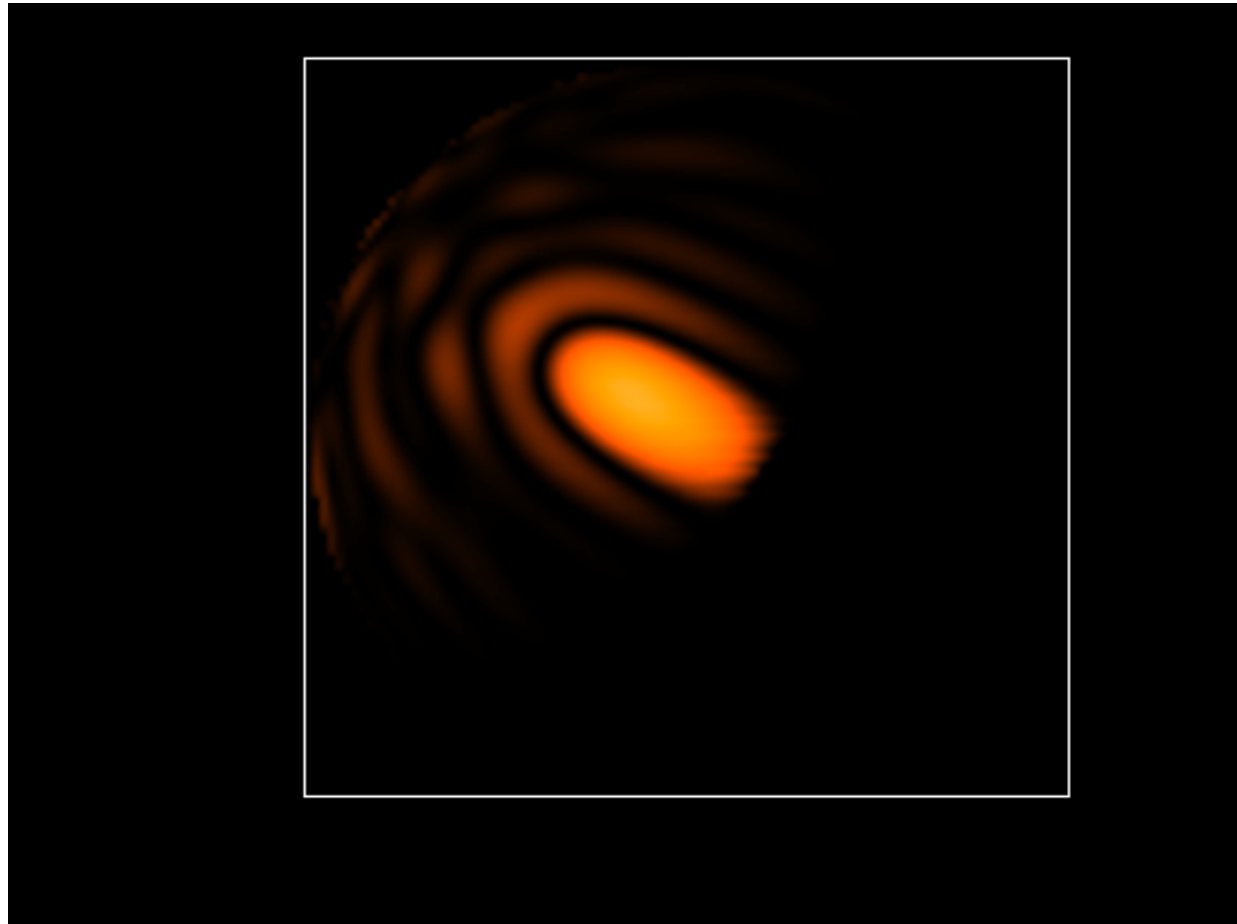


Time and DD Primary Beam: EVLA



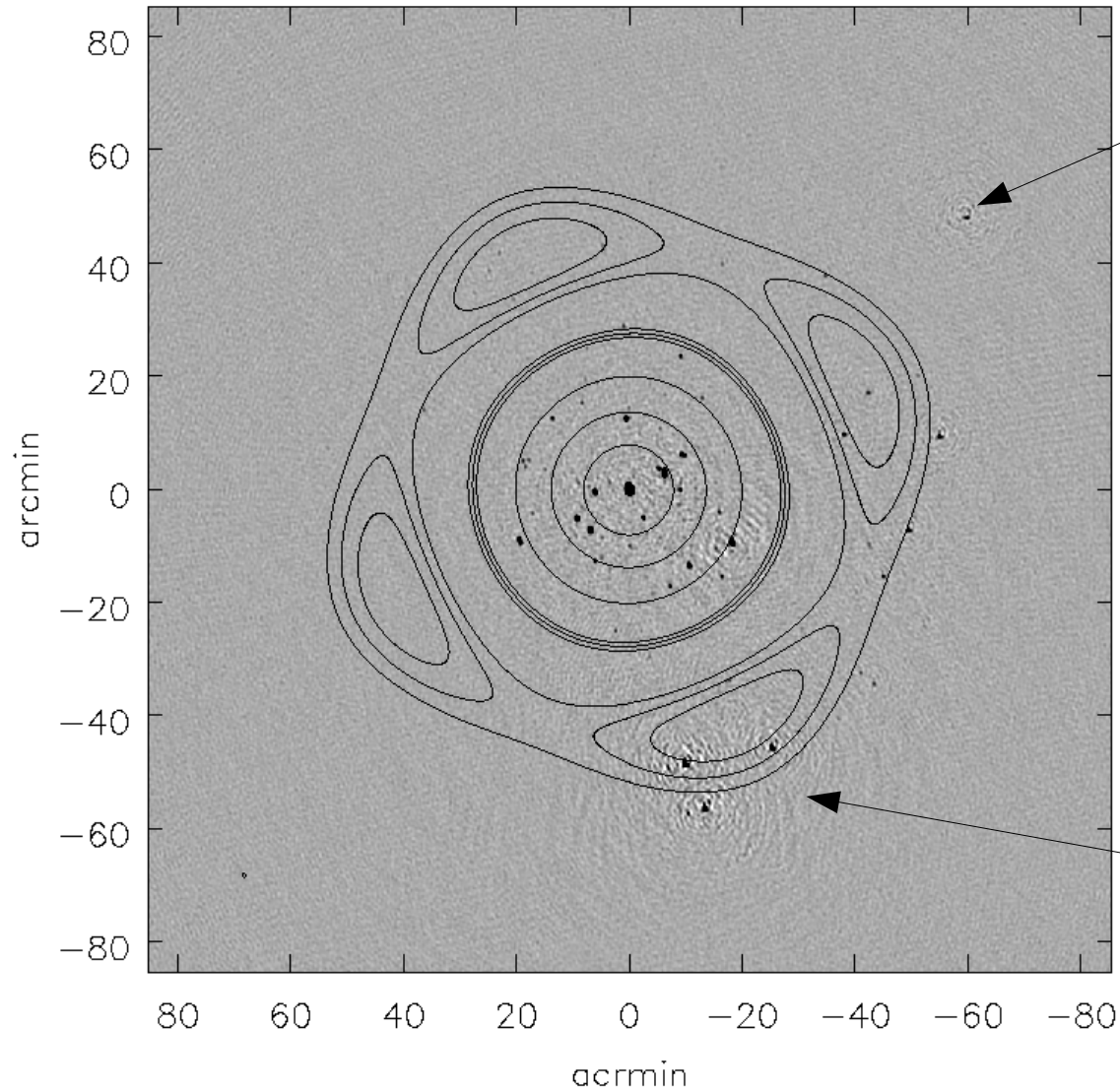
Ionospheric Phase Screen

Examples of DD effects (continued)



Time and DD Primary Beam: LWA

3C147: Full field



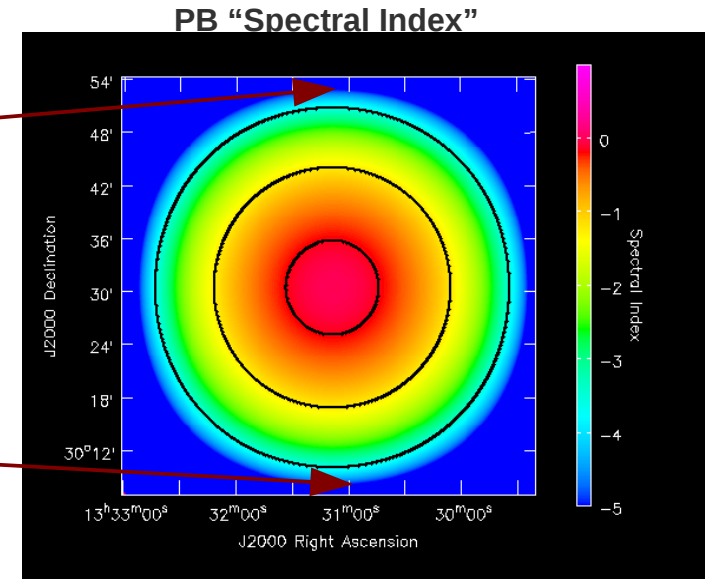
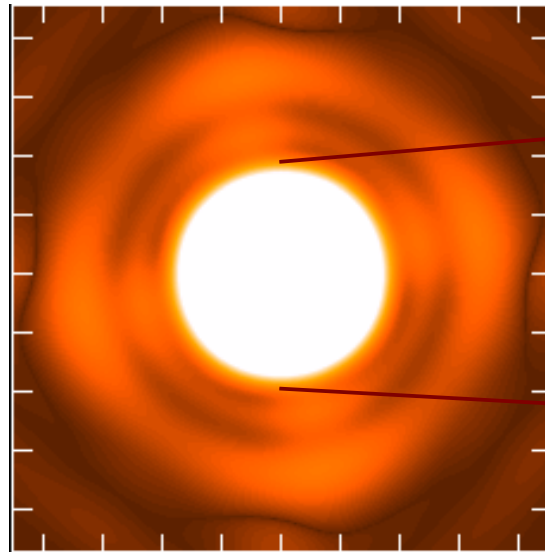
W-Term errors!

- 3C147 field at L-Band with the EVLA
- Only 12 antennas used
- Bandwidth: 128 MHz
- ~7 hr. integration
- Dynamic range: ~700,000:1

Errors due PB side-lobes?

Wide-band PB effects

- For wide-band observations, frequency dependence of the PB is a first order effect



$$V(b_{ij}) = \int M_{ij}^S I(s) e^{2\pi i (b_{ij} \cdot s)} ds$$

- Is it $M(s, \nu)$ or is it $I(s, \nu)$?
- Fundamental separation: Include PB as part of the measurement process (include its effect as part of forward and reverse transforms)