

Fig1 Device Manager

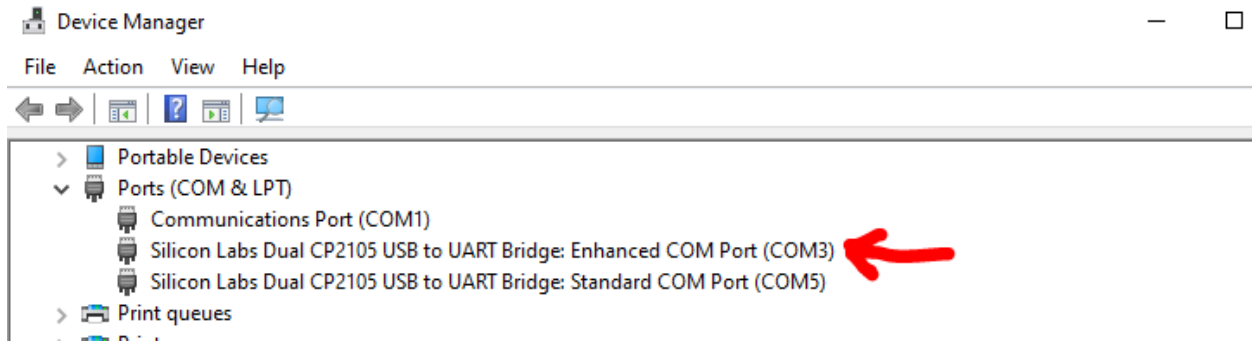


Fig 2 Setup.cmd

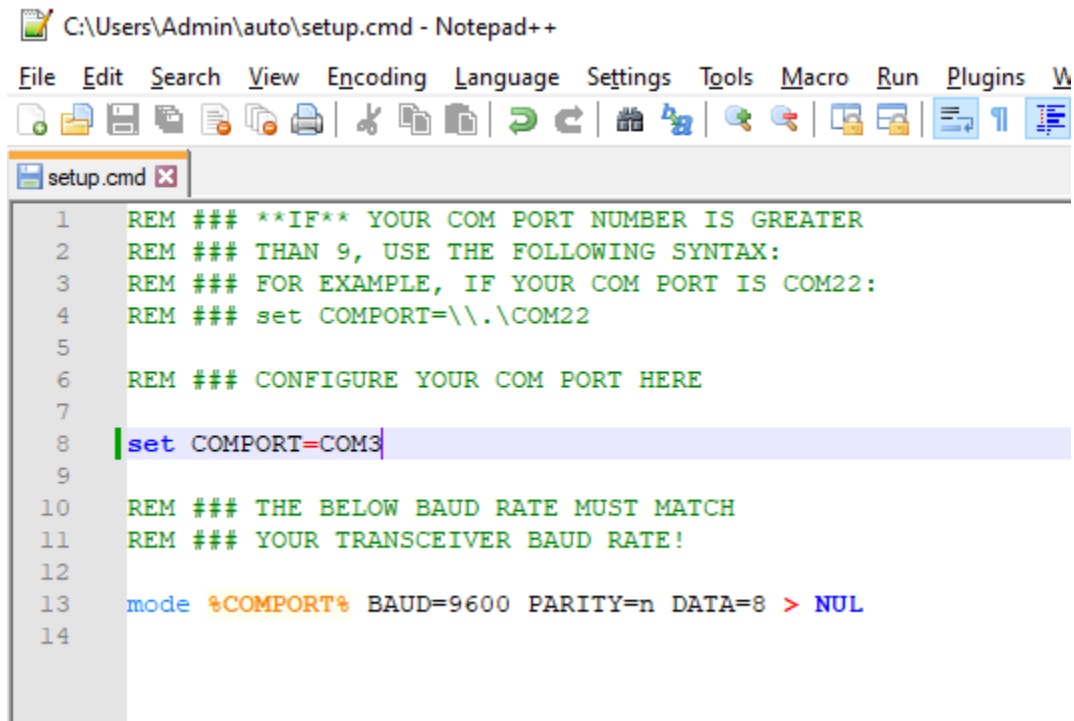


Fig3 VSPE Settings

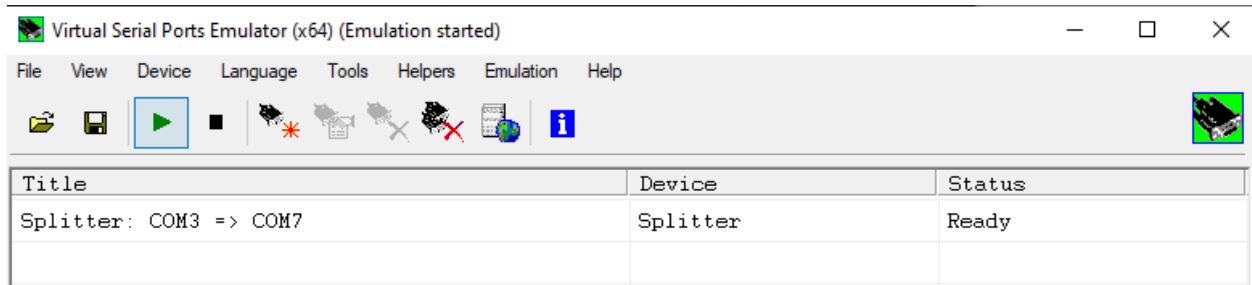


Fig4 VSPE Device Properties

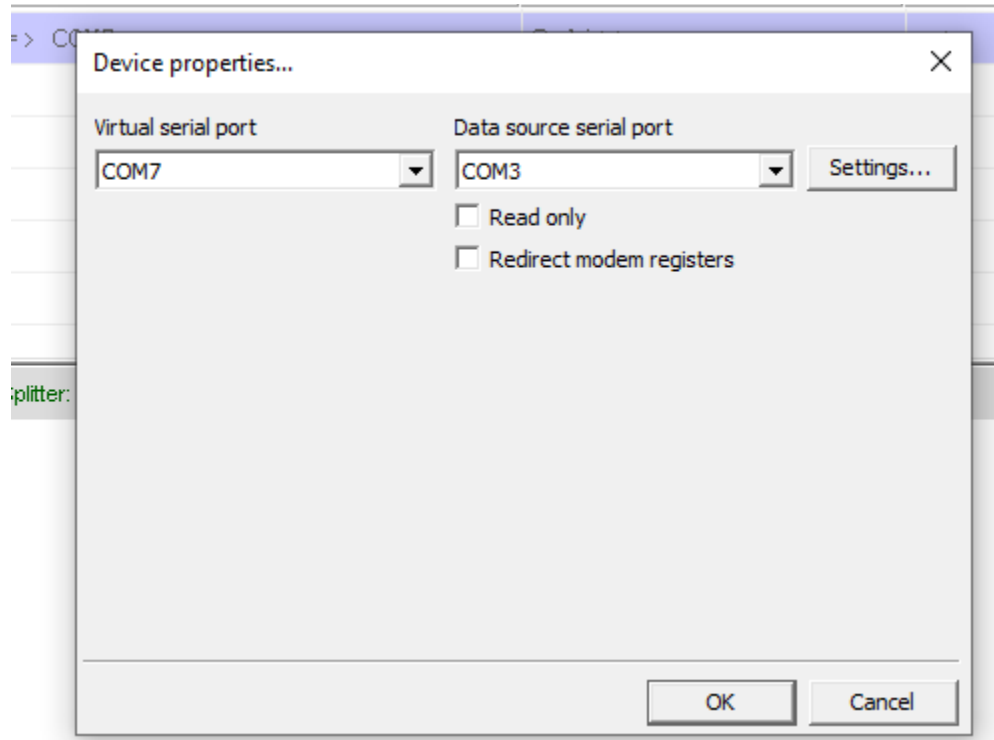


Fig5 M=>A Button

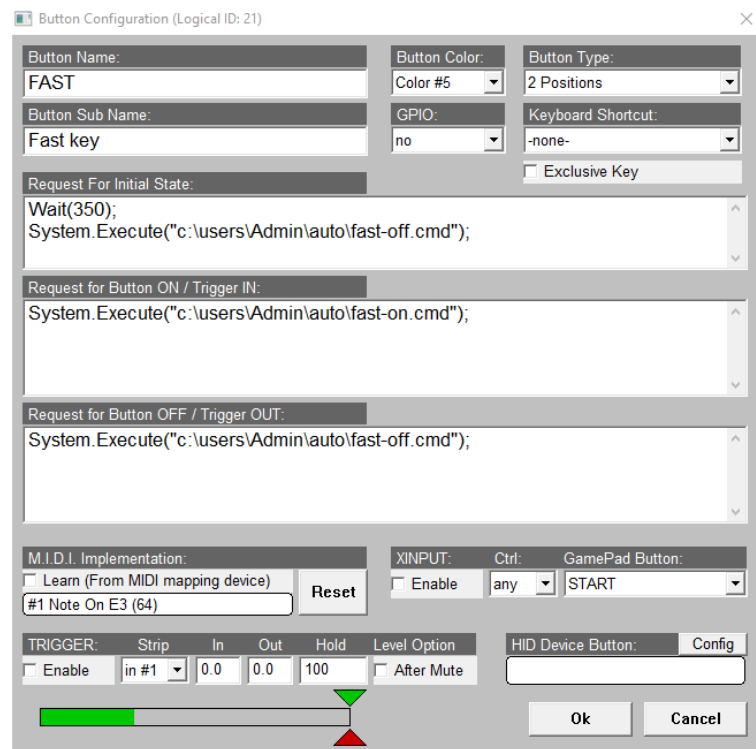
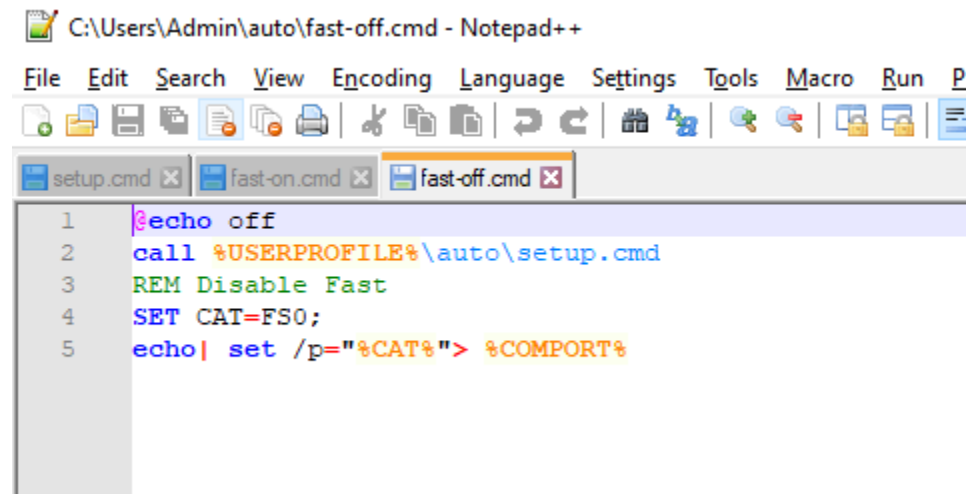


FIG 6 on/off cmd files

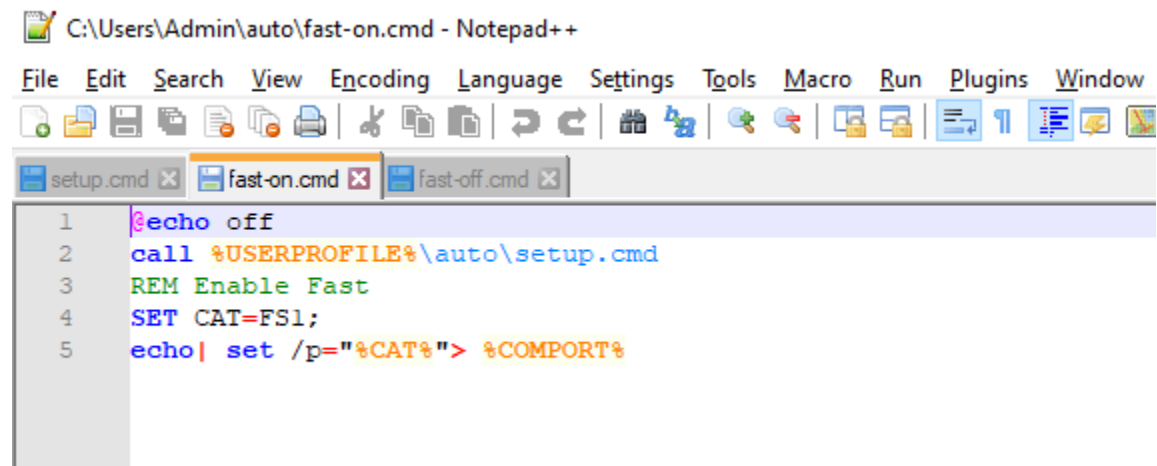


C:\Users\Admin\auto\fast-off.cmd - Notepad++

File Edit Search View Encoding Language Settings Tools Macro Run P

setup.cmd x fast-on.cmd x fast-off.cmd x

```
1  @echo off
2  call %USERPROFILE%\auto\setup.cmd
3  REM Disable Fast
4  SET CAT=FS0;
5  echo| set /p="%CAT%"> %COMPORT%
```



C:\Users\Admin\auto\fast-on.cmd - Notepad++

File Edit Search View Encoding Language Settings Tools Macro Run Plugins Window

setup.cmd x fast-on.cmd x fast-off.cmd x

```
1  @echo off
2  call %USERPROFILE%\auto\setup.cmd
3  REM Enable Fast
4  SET CAT=FS1;
5  echo| set /p="%CAT%"> %COMPORT%
```