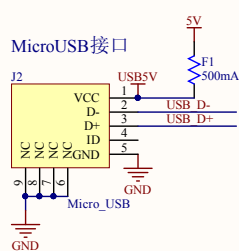
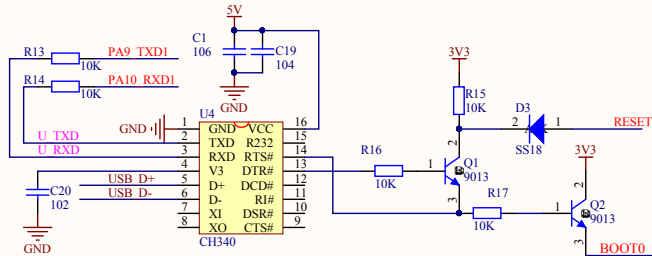


系统供电稳压

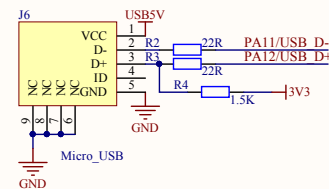


MicroUSB接口

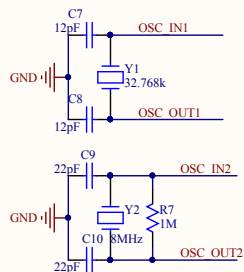


USB转串口TTL 一键下载电路

标准MicroUSB接口



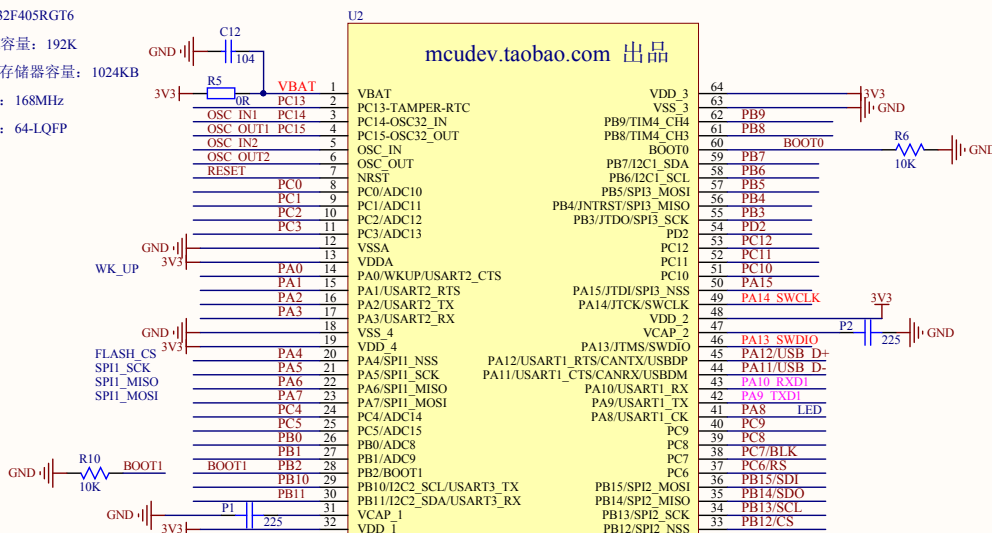
USB供电接口



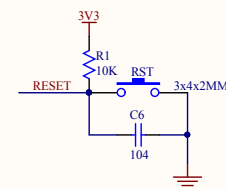
高频和低频晶振

STM32--CPU

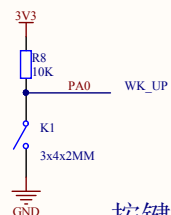
STM32F405RGT6
RAM容量: 192K
程序存储器容量: 1024KB
速度: 168MHz
封装: 64-LQFP



STM32F405RGT6核心板



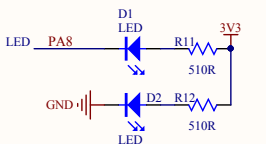
系统复位



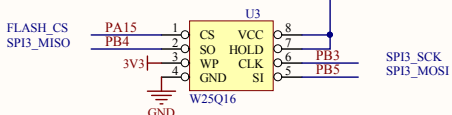
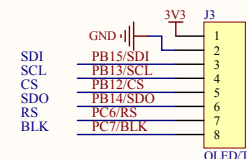
按键和LED灯



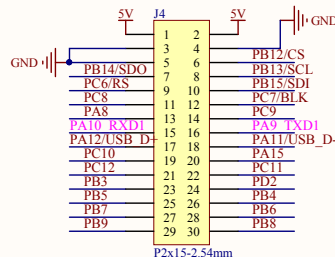
SWD调试编程接口



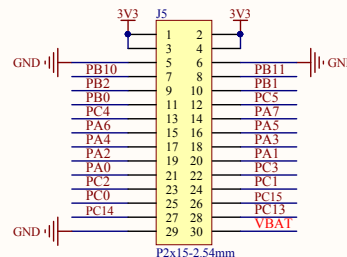
OLED/TFT液晶接口



FLASH数据存储



通用I/O接口



Title			STM32F405RGT6核心板
Size	Number	Revision	
A3			
Date:	2018-5-21	Sheet of	
File:	Z:\VMDOC\4F405RC SchDoc	Drawn By:	

固定孔直径: 2mm

