



Red Hat Enterprise Linux 8: New Features and Benefits Overview

Driving customer success with the adoption of Red Hat Enterprise Linux 8 training

John Walter
Solutions Architect, Training + Certification



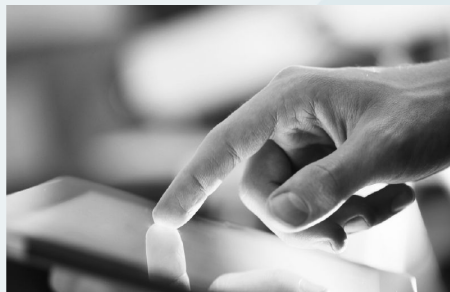
Red Hat Enterprise Linux 8 Technical Overview

What's new with Red Hat Enterprise Linux 8?



Subscription expansion

Red Hat Insights is now included in every Red Hat Enterprise Linux subscription.



Predictable schedule

The new release cycle will be 3 years between major releases and 6 months for minor releases.



New features

Benefits include faster and more consistent delivery and deployment.

At a glance

KERNEL VERSION	4.18+
SYSTEM COMPILER	GCC 8.2, LLVM 6.0
HARDWARE ARCHITECTURES	Intel/AMD 64-bit, IBM Power LE, IBM z Systems, ARM 64-bit
DEFAULT FILE SYSTEM	XFS
PACKAGE MANAGEMENT	Yum v4
TIME SYNCHRONIZATION	Chrony
NETWORKING	NetworkManager

What's new with Red Hat Enterprise Linux 8?

Feature	Benefit
Red Hat Insights	All subscriptions now include Red Hat Insights, which helps IT teams proactively identify and remediate threats to security, performance, availability, and stability to avoid issues, outages, and unplanned downtime.
Release cadence	The new release cycle will be 3 years between major releases and 6 months for minor releases, allowing you to plan application impact better.
Container tools	Eliminating the need for escalated privileges to build containers improves security.
Single variant with multiple use cases	You no longer need to hunt for applications to get them available in different variants.
Terminal session recording	Native tools are integrated with the audit system, and multiple playback options and regulatory and nonregulatory use cases let you record sessions for auditing purposes.



Powering the adoption of containerized workloads

TRADITIONAL DEVELOPMENT



Find

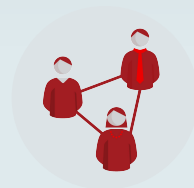


Run



Build

Red Hat Enterprise Linux
(Podman/Buildah/Skopeo)



Share

Quay

CLOUD-NATIVE



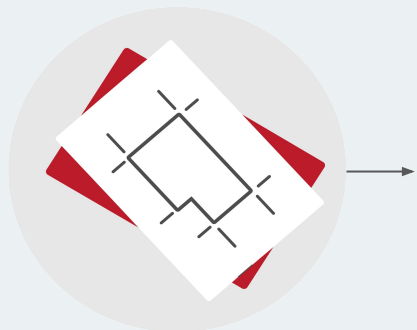
Integrate



Deploy

Red Hat OpenShift®
(Kubernetes)

Create images for all your environments with image builder



Blueprint



Bare metal



Hypervisors



Public clouds



Private clouds

Single source

Lets you create gold images for any environment from the same blueprint increasing stability and consistency

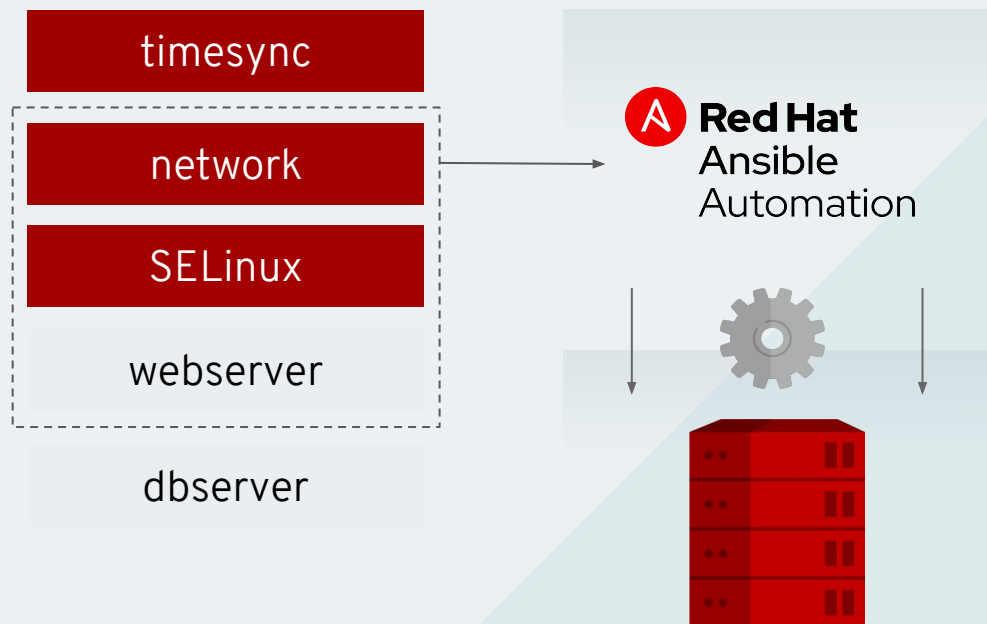
Any footprint

Supports public cloud, private cloud, enterprise hypervisors, and bare metal

Simple interface

Provides web-based view within the web console for selecting packages and creating blueprints

Speed automation creation with system roles



Common automation

Manage multiple versions of Red Hat Enterprise Linux from a single role

Reduced rework

Import provided roles to eliminate task creation in playbooks

Easy switching of providers

Change between default and optional tools quickly and safely

Red Hat Enterprise Linux 8 Curriculum Overview

Training and Certifying on RHEL 8

Action	Outcome
Adapt to core system changes	You will be able to manage core system components that have had significant changes in Red Hat Enterprise Linux 8.
Implement storage using new features	You will know how to explore the major enhancements regarding storage in Red Hat Enterprise Linux 8.
Provision and manage servers	You will be able to prepare standardized system images for deployment, managing them with remote web-based administration and automating provisioning with system roles for Red Hat Ansible® Engine.
Manage containers with the new runtime	You will be able to explain the new container runtime engine and tools that replace the Docker container engine.
Implement enhanced networking features	You will know how to describe the major enhancements in network packet processing and network device management.
Adapt to virtualization improvements	You will learn how to implement the new features and management tools for virtualization management.

The New Red Hat Certified Engineer

WHAT IS CHANGING WITH THE NEW RHCE?

1. The new RHCE exam (EX294) will focus on automation of Linux system administration using **Ansible and shell Scripting**
2. Red Hat System Administration III (RH254) will be superseded by Red Hat System Administration III: Linux Automation (RH294)



RED HAT®
ENTERPRISE
LINUX® 8

The New Red Hat Certified Engineer

WHAT IS **NOT** CHANGING WITH THE NEW RHCE?

1. NOBODY'S EXISTING CERTIFICATION STATUS IS AFFECTED BY THESE CHANGES
2. You must be a current Red Hat Certified System Administrator (RHCSA) in order to earn RHCE
3. The RHCE exam will still be 100 percent hands-on like all Red Hat certification exams
4. The RHEL 7-based RHCE exam and RHEL 7 Red Hat System Administration III course will remain available for one year



Red Hat Certified Engineer Learning Paths

RHEL 7 Path

RH124 - Red Hat System Administration I

RH134 - Red Hat System Administration II

EX200 - Red Hat Certified System Administrator

RH254 - Red Hat System Administration III

EX300 - Red Hat Certified Engineer

RHEL 8 Path

RH124 - System Administration I

RH134 - System Administration II

EX200 - Red Hat Certified System Administrator

RH294 - Red Hat System Administration III: Linux
Automation

EX294 - Red Hat Certified Engineer

Want to switch lanes? Be our guest!

System Administration III: Linux Automation - RH294

GA: June 2019

Red Hat System Administration III: Linux Automation (RH294) for Red Hat Enterprise Linux 8 is designed for experienced Linux system administrators who hold a Red Hat Certified System Administrator (RHCSA) certification or equivalent skills and who want to broaden their ability to administer Linux systems at an enterprise level. We are shifting the focus of the course to include automation of Linux system administration tasks using Ansible and shell scripting.

Audience

Experienced Linux system administrators who hold a Red Hat Certified System Administrator (RHCSA) certification or equivalent skills and who want to broaden their ability to administer Linux systems at an enterprise level using **Ansible and shell scripting**.

Prerequisites

- RHCSA certification or equivalent experience
- For candidates that have not obtained their RHCSA certification, confirmation of the correct skills and knowledge can be obtained by taking the Red Hat Skills Assessment

Frequently Asked Questions

Why are these changes being made to the curriculum?

With IT organizations facing challenges related to scaling infrastructure efficiently, companies are increasingly turning to Red Hat® Ansible® Automation as a common language to automate across different functions. As a result, system administrators need to understand more than how to deploy, configure, and manage an operating system—they need to know how to automate functions and how to make the automation itself scalable.

By shifting the focus of RHCE to the automation of system administration tasks—principally using Red Hat Ansible Automation—we are reflecting the current reality for progressive organizations and the coming reality for the technology industry.

I'm already an RHCE.. what happens to me?

You will retain your RHCE status for the full 3 years from when you became an RHCE. You can recertify under the new program if you would like, but it is not a requirement. Review all the certification renewal details to learn how to ensure your credential remains current. These options include earning other certifications that apply toward becoming a Red Hat Certified Architect in Infrastructure.

I have my RHCSA but not my RHCE. What should I do?

You have the option of either pursuing the new, automation-focused RHCE or working toward becoming an RHCE under the existing program. If you wish to pursue the new RHCE track, we recommend that you take the Red Hat System Administration III (RH294) course and RHCE exam (EX294).

More questions? Visit our [FAQ](#).

Red Hat Enterprise Linux 8 New Features for Experienced Administrators - RH354

Red Hat Enterprise Linux 8 New Features for Experienced Linux Administrators (RH354) introduces you to updates in the upcoming Red Hat® Enterprise Linux® release. Intended for experienced Linux system administrators, this course offers a rapid orientation to Red Hat Enterprise Linux 8 based on the pre-release beta. The offering prepares operators, managers, principal system administrators, and other IT professionals with experience in Red Hat Enterprise Linux 7 for deployments and migrations to the new release.

Audience

Experienced Linux system administrators who hold a Red Hat Certified System Administrator (RHCSA) certification or equivalent skills in RHEL 7 and who want to understand the latest features of RHEL 8.

Certification: None. Students should pursue RH199 or RH294 for RHCSA/RHCE

Considerations/Notable Items

- Covers migration path from RHEL7 to RHEL8
- Adjust to changes to core components of the operating system, including Python 3, Wayland, and Chrony-based NTP service.
- Develop and test portable, standards-based containers with the new runtime and toolchain.
- Configure servers efficiently with the updated web-based remote interface and with Red Hat Enterprise Linux System Roles

Demo

Questions?

Thank you

Red Hat is the world's leading provider of enterprise open source software solutions. Award-winning support, training, and consulting services make Red Hat a trusted adviser to the Fortune 500.



[linkedin.com/company/red-hat](https://www.linkedin.com/company/red-hat)



[youtube.com/user/RedHatVideos](https://www.youtube.com/user/RedHatVideos)



[facebook.com/redhatinc](https://www.facebook.com/redhatinc)



twitter.com/RedHat