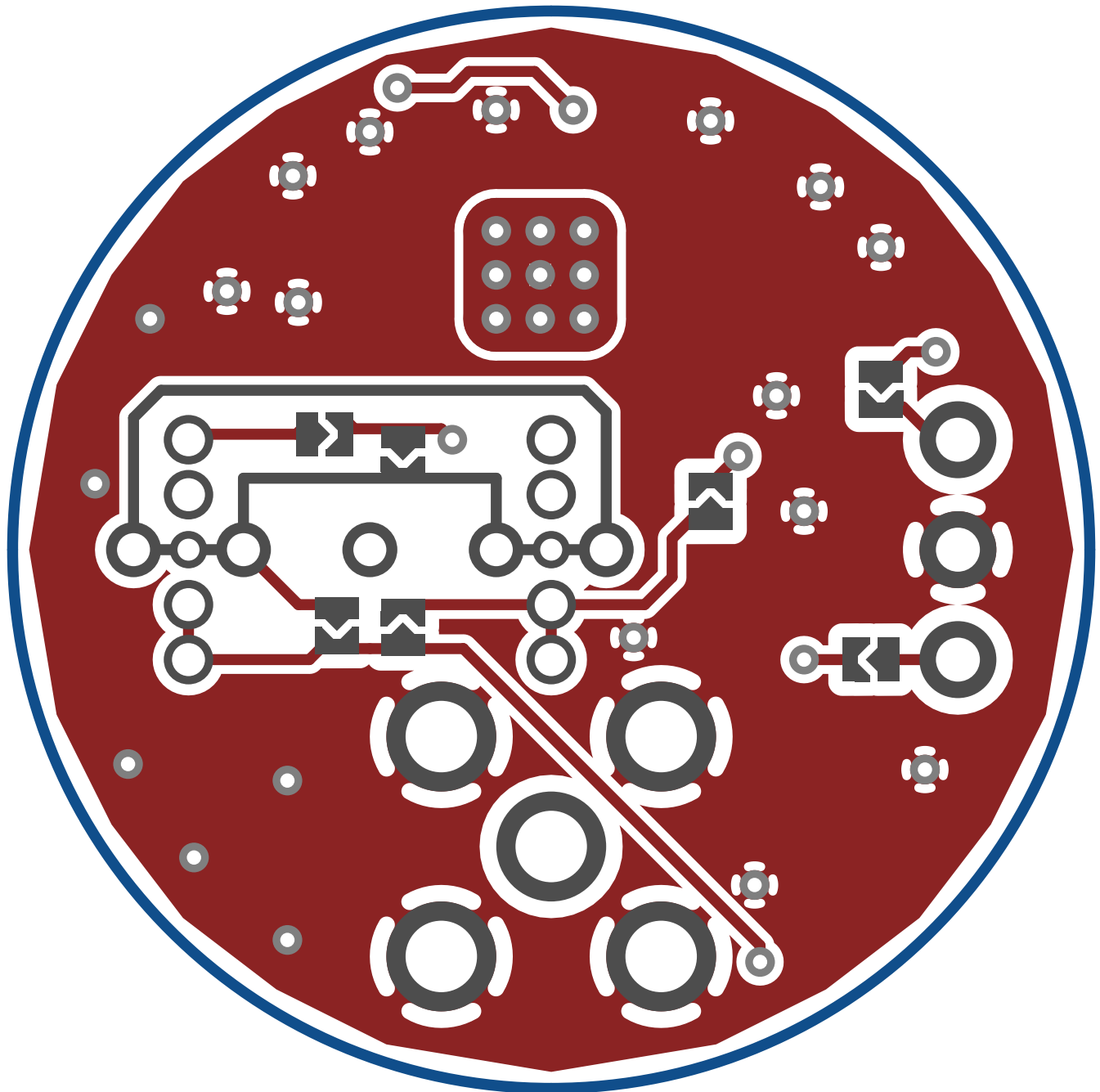


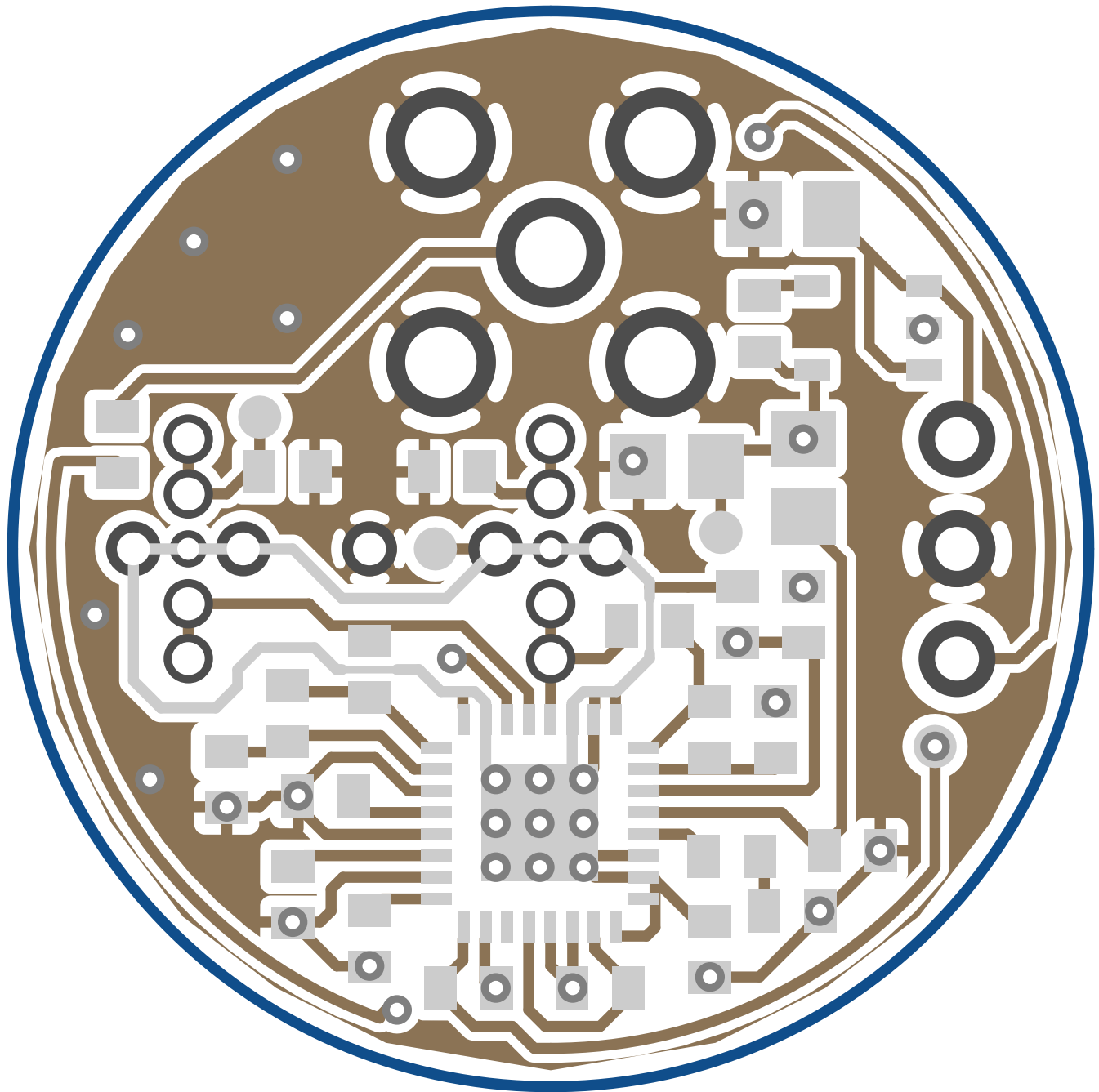
1. Table of Contents (This Page)

Created on Wed Mar 29 19:53:52 2017

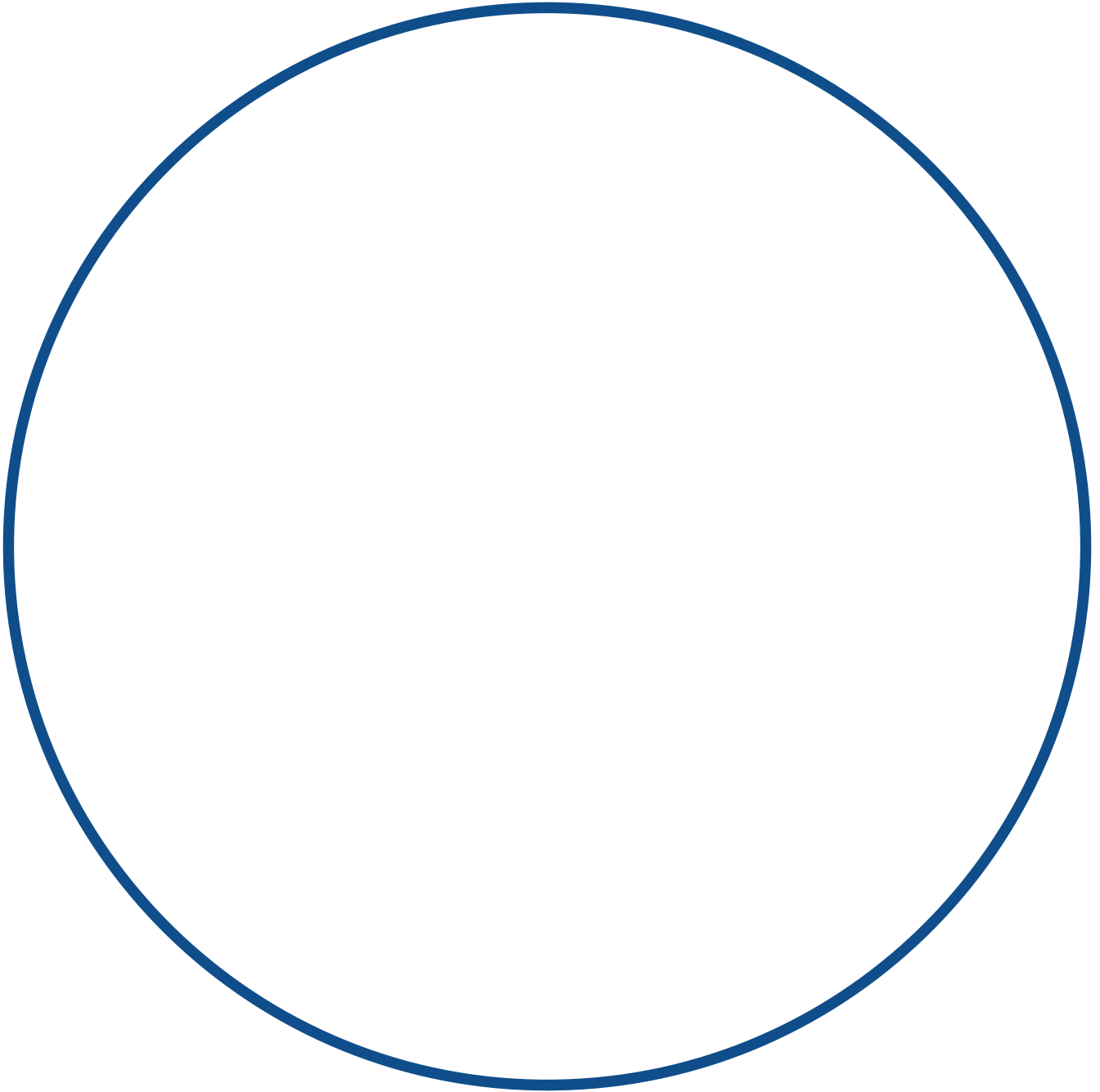
2. top
3. bottom-fill
4. outline
5. plated-drill
6. componentmask
7. soldermask
8. topsilk
9. bottomsilk
10. bottompaste
11. topassembly
12. bottomassembly
13. fab



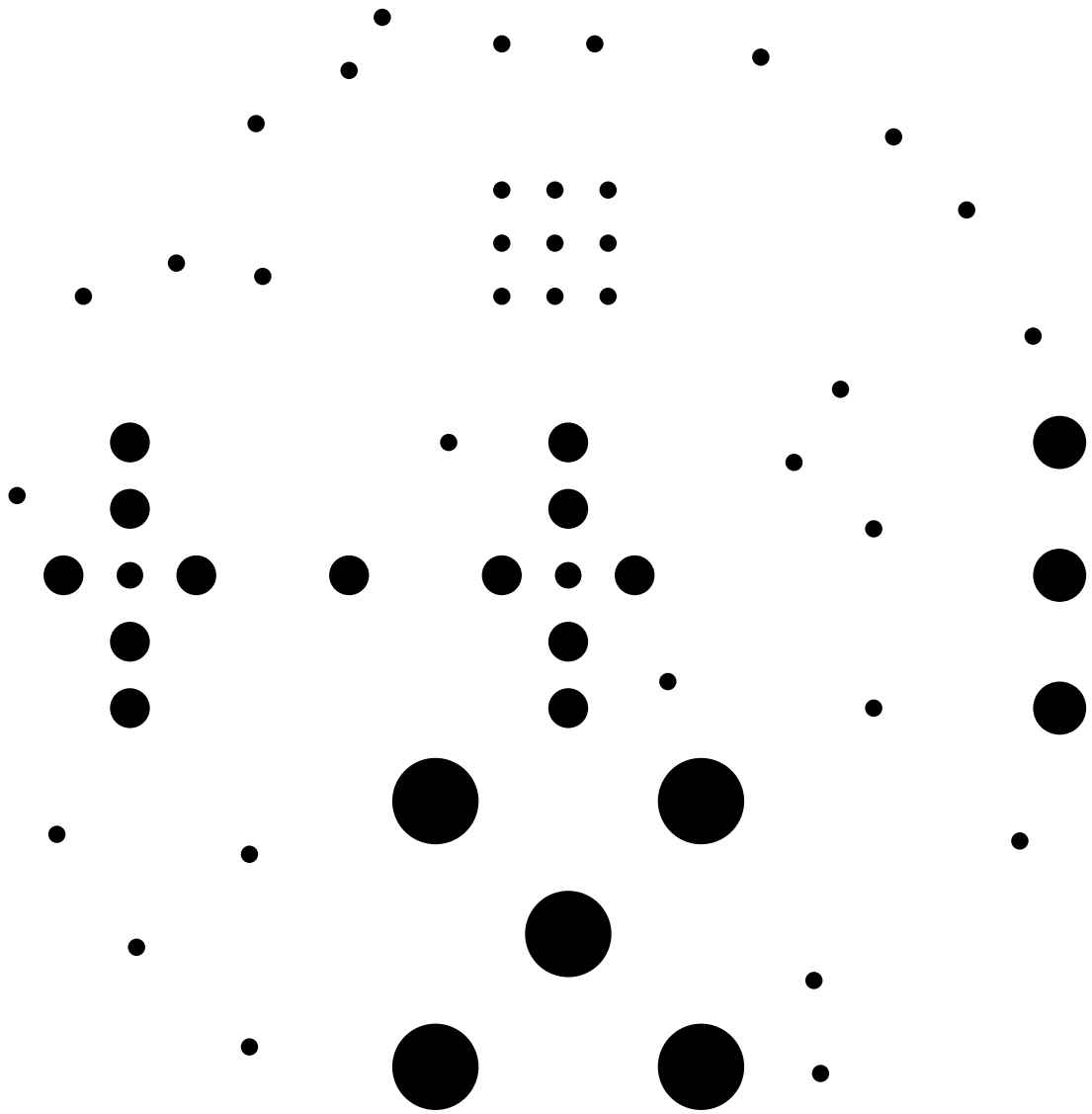
logpd, top, not to scale
logpd.pcb



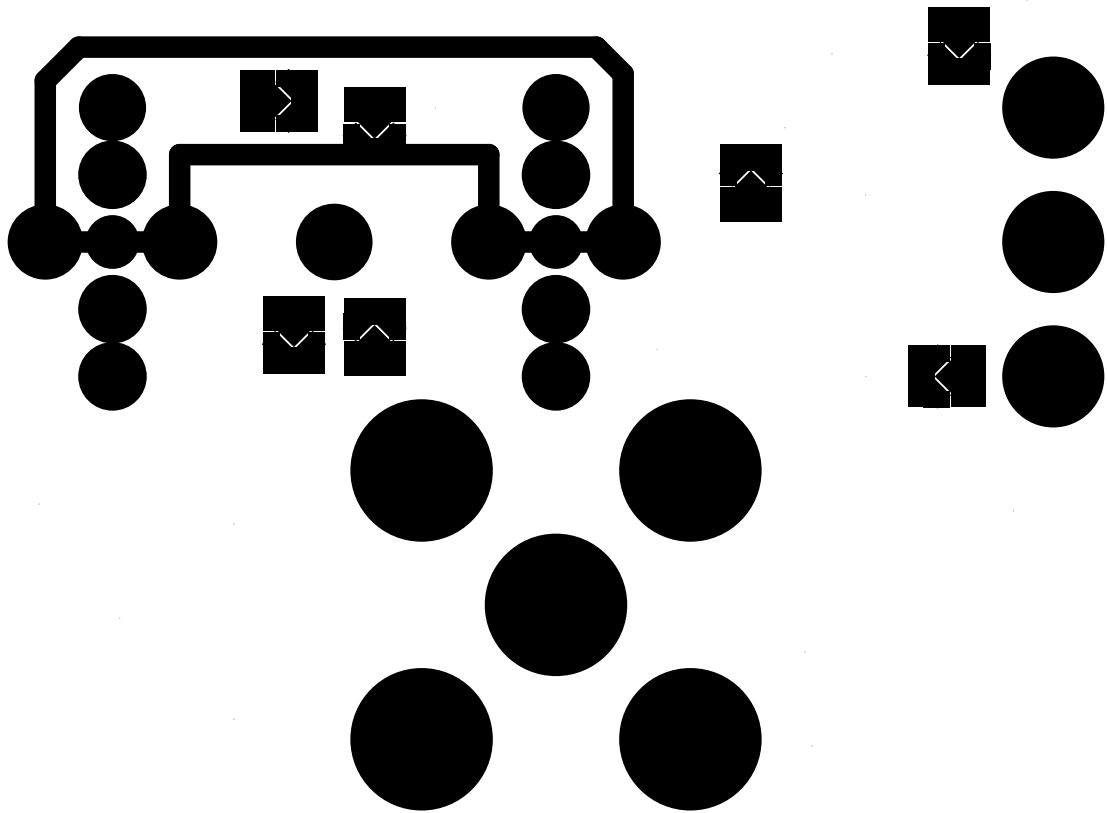
logpd, bottom (mirrored), not to scale
logpd.pcb

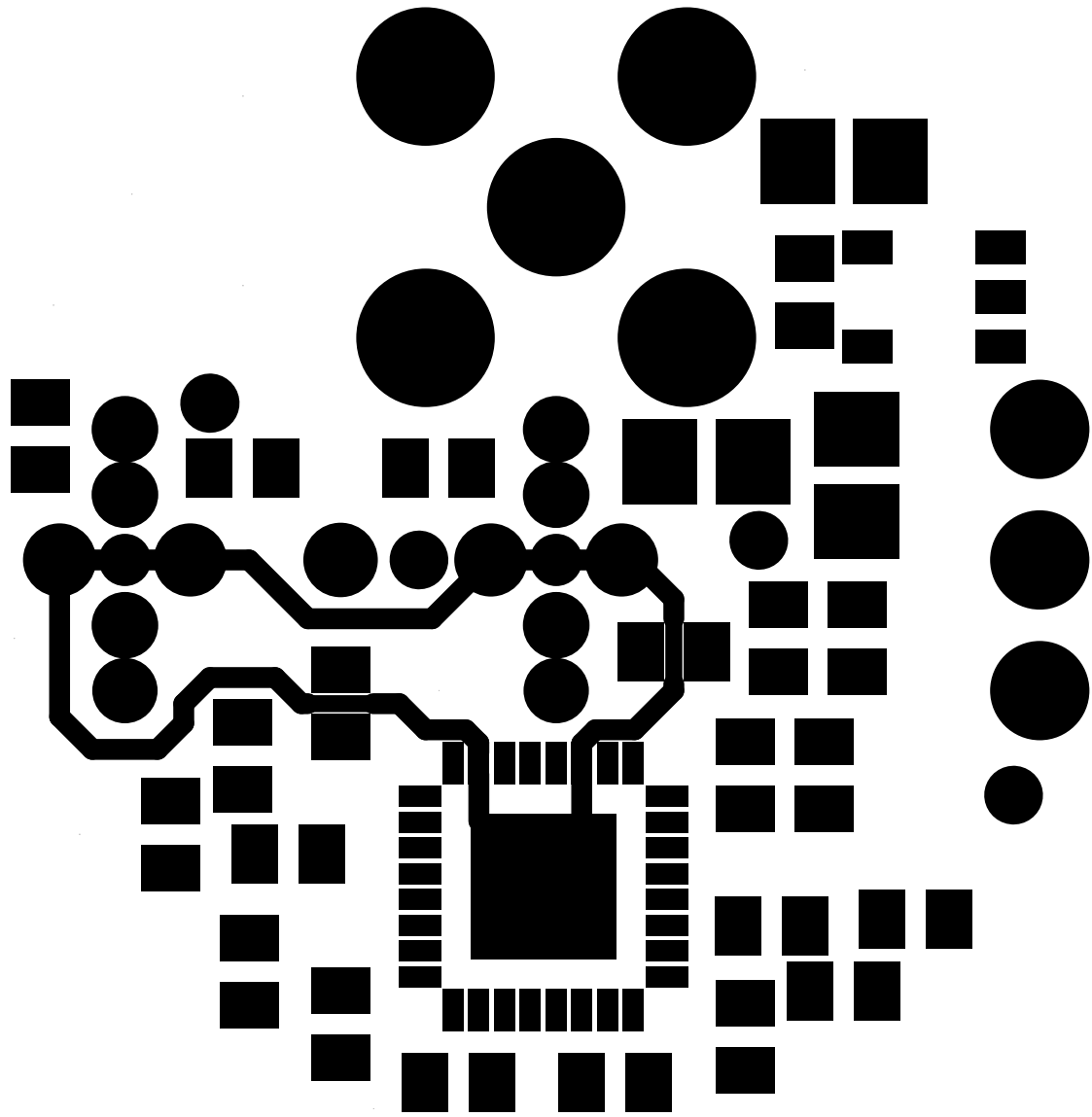


logpd, outline, not to scale
logpd.pcb



logpd, plated-drill, not to scale
logpd.pcb

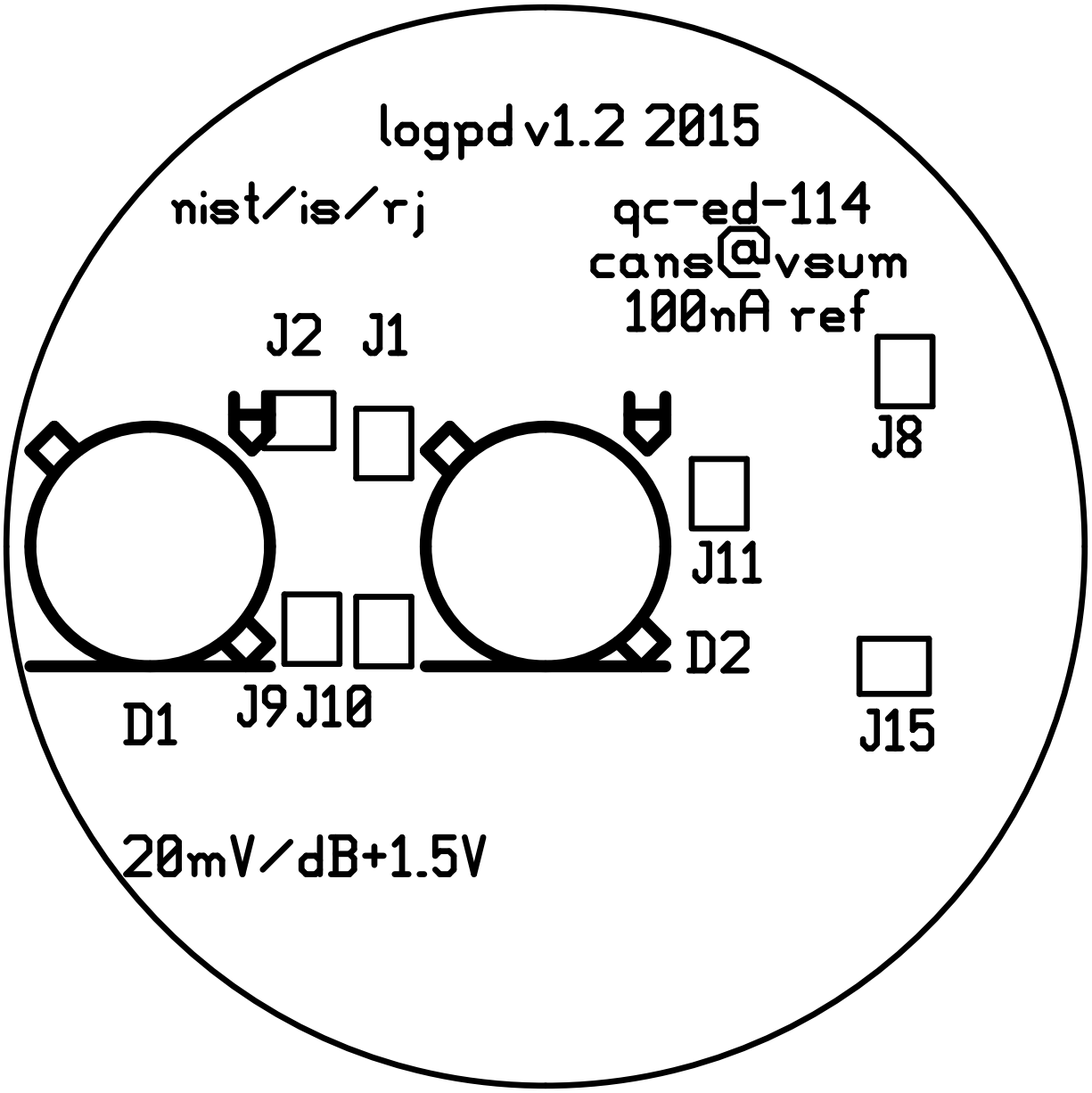




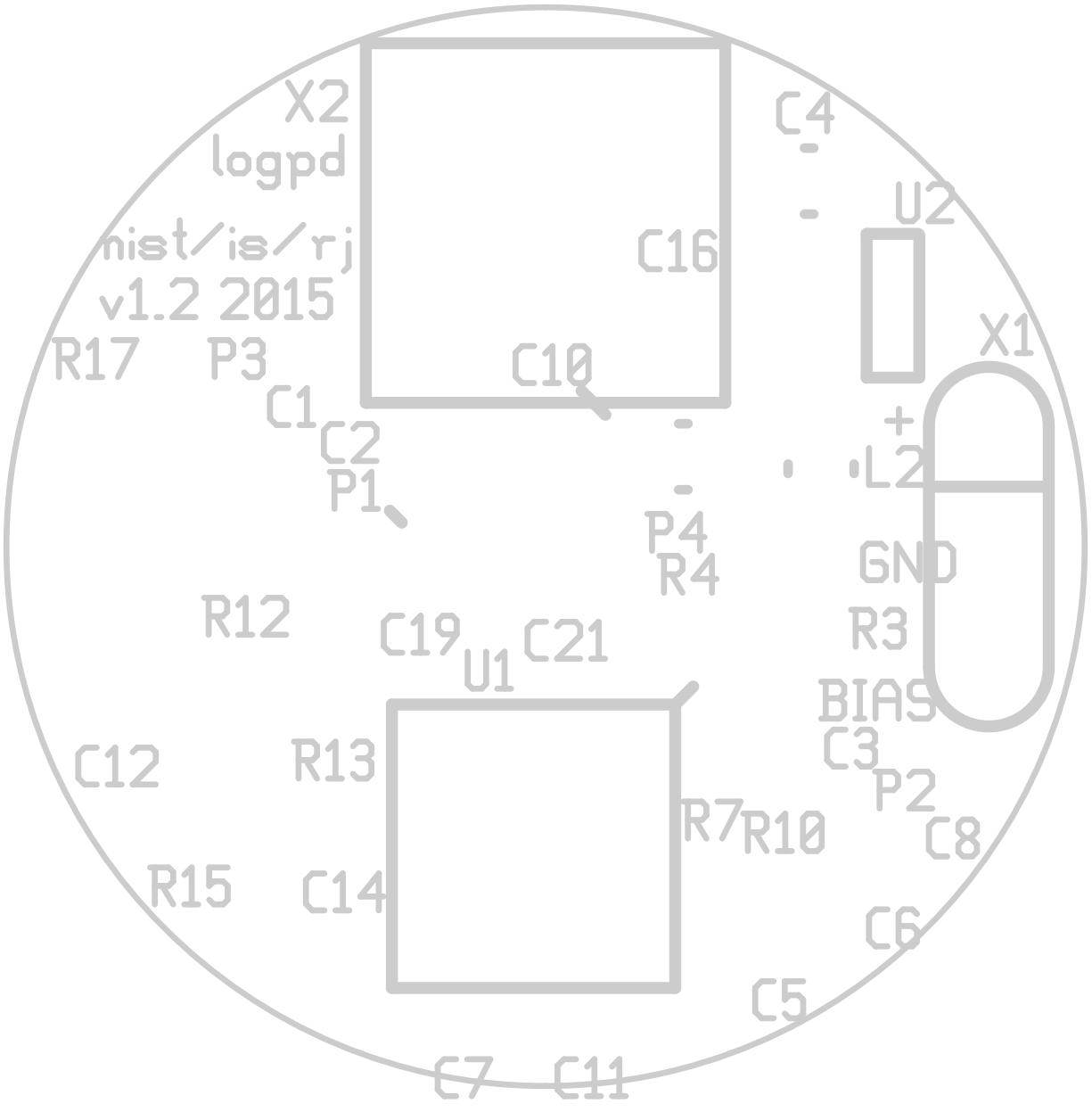
logpd v1.2 2015

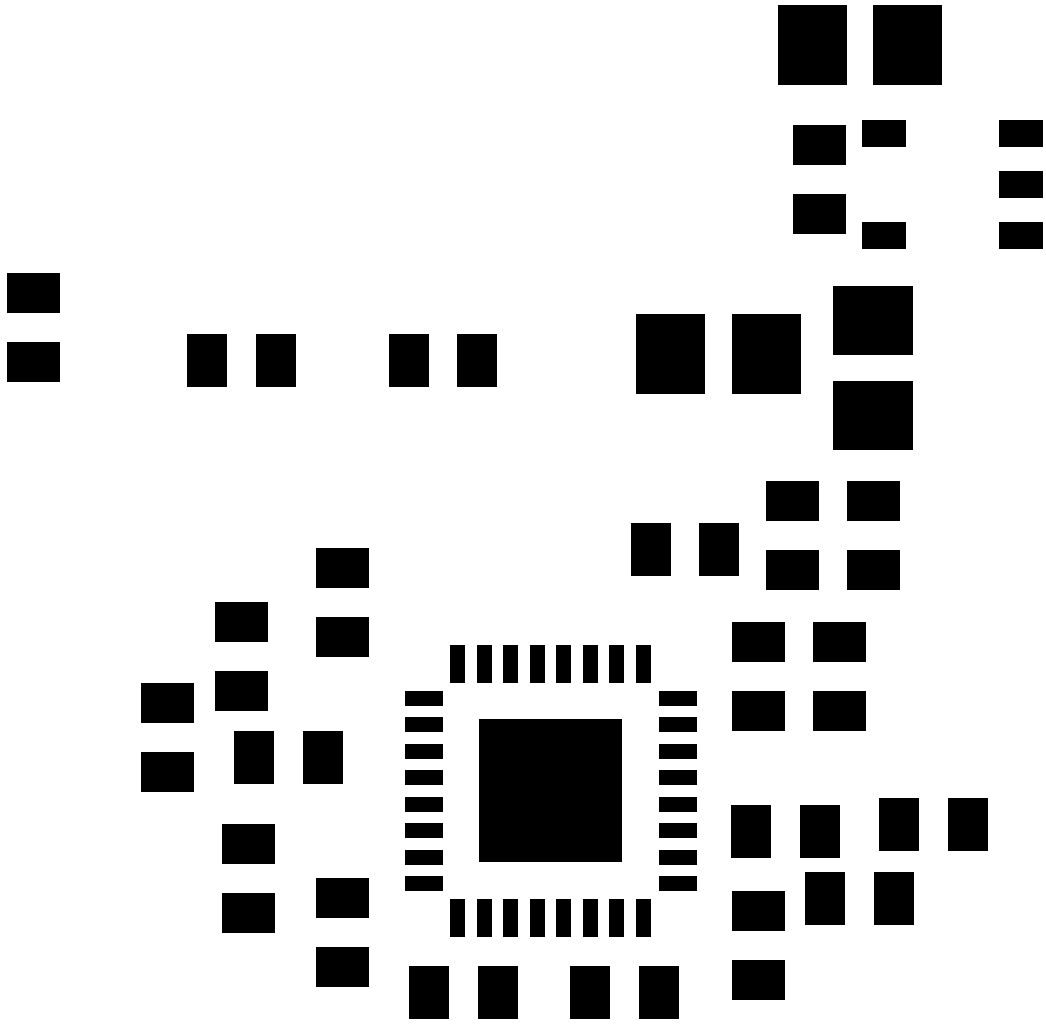
nist/is/rj

qc-ed-114
cans@vsum
100nA ref

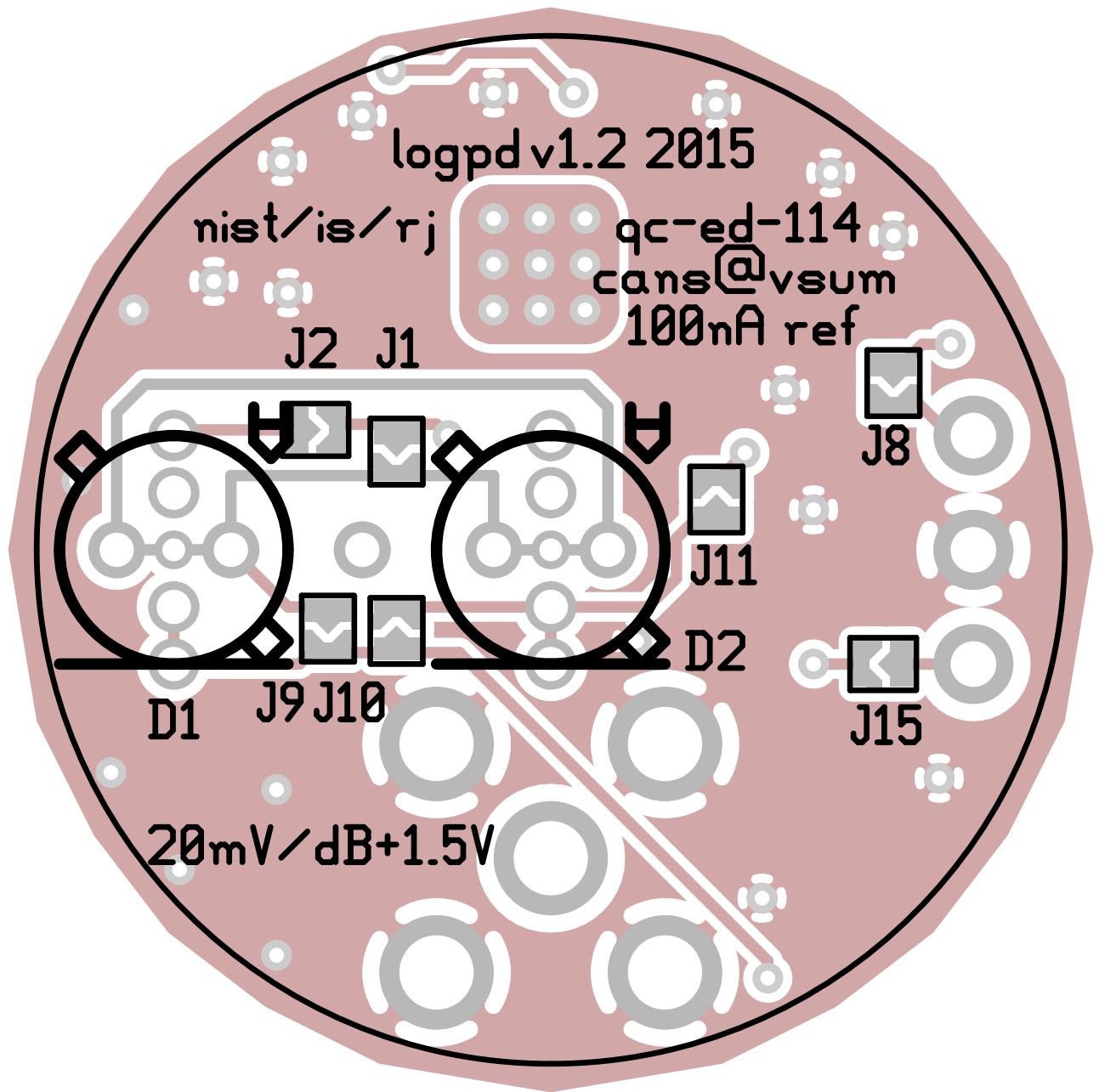


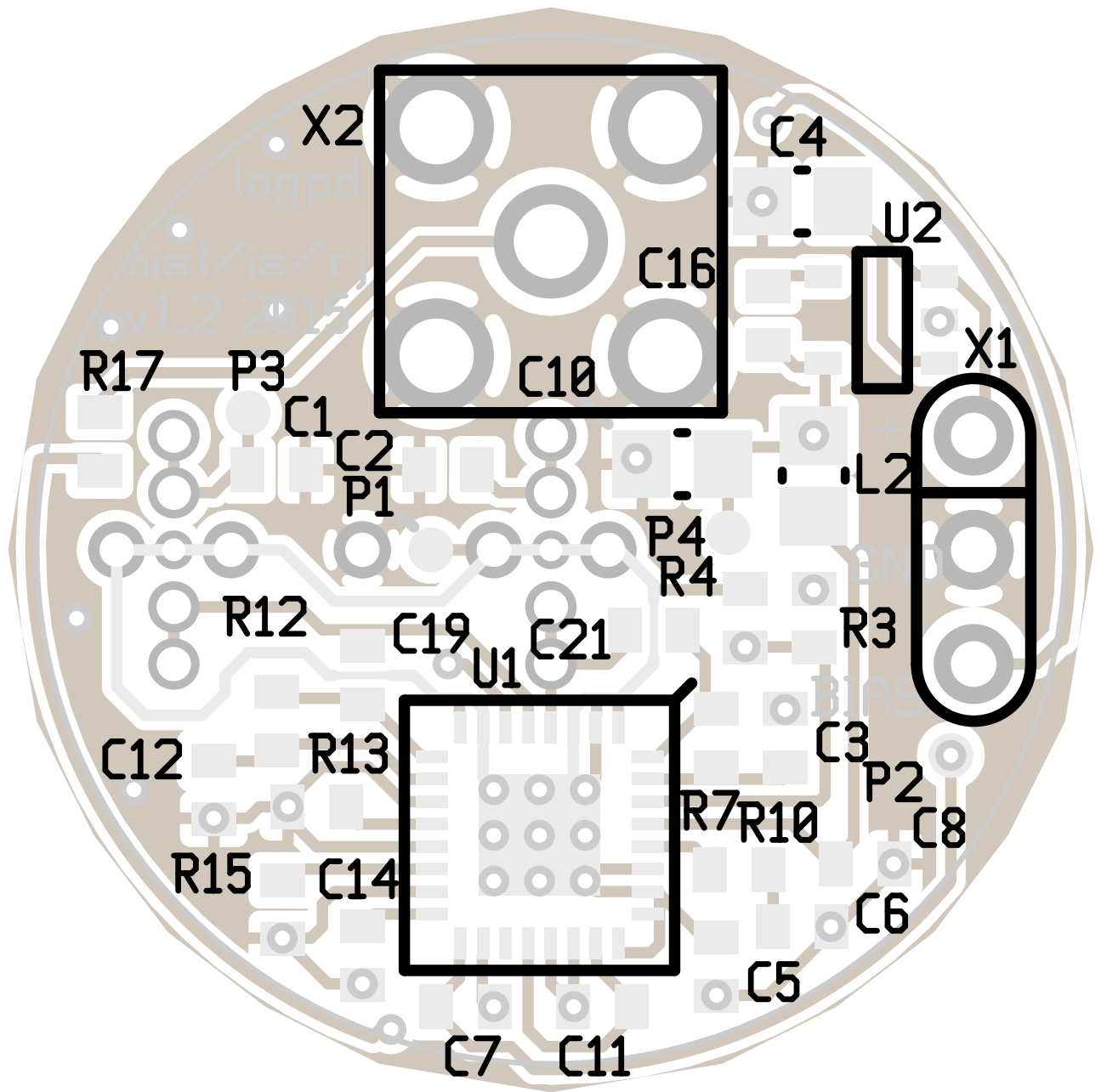
20mV/dB+1.5V





logpd, bottompaste (mirrored), not to scale
logpd.pcb





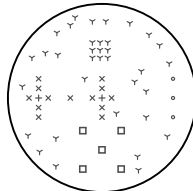
There are 5 different drill sizes used in this layout, 58 holes total

Symbol	Diam. (Inch)	Count	Plated?
γ	0.013	35	YES
+	0.020	2	YES
x	0.030	13	YES
o	0.040	3	YES
□	0.065	5	YES

Title: logpd - Fabrication Drawing

Author: Robert J. [redacted]rdens

Date: Wed Mar 29 17:53:52 2017 UTC



Board outline is the centerline of this path