

# Triplannet

SWPP Mid-Presentation

Team 6

# Introduction

- Organize
- Search
- Share

# Travel Plans

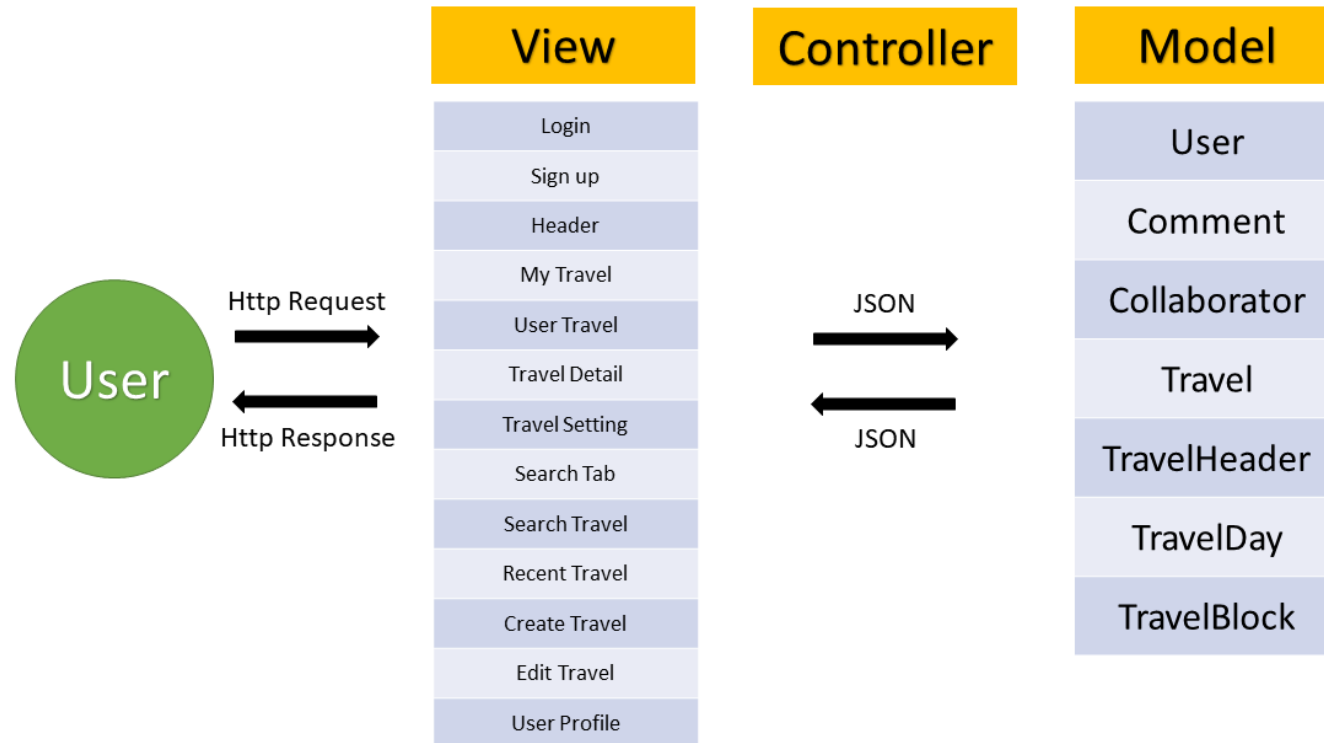
# Why Triplannet ?

- Easy-to-use UI
  - Drag & Drop
  - Block & Icon based design
- Sharable & Forkable
  - Make plan with your companions
  - Fork plans you like
- Support Mobile Environment
  - Consistent UI between PC and Mobile

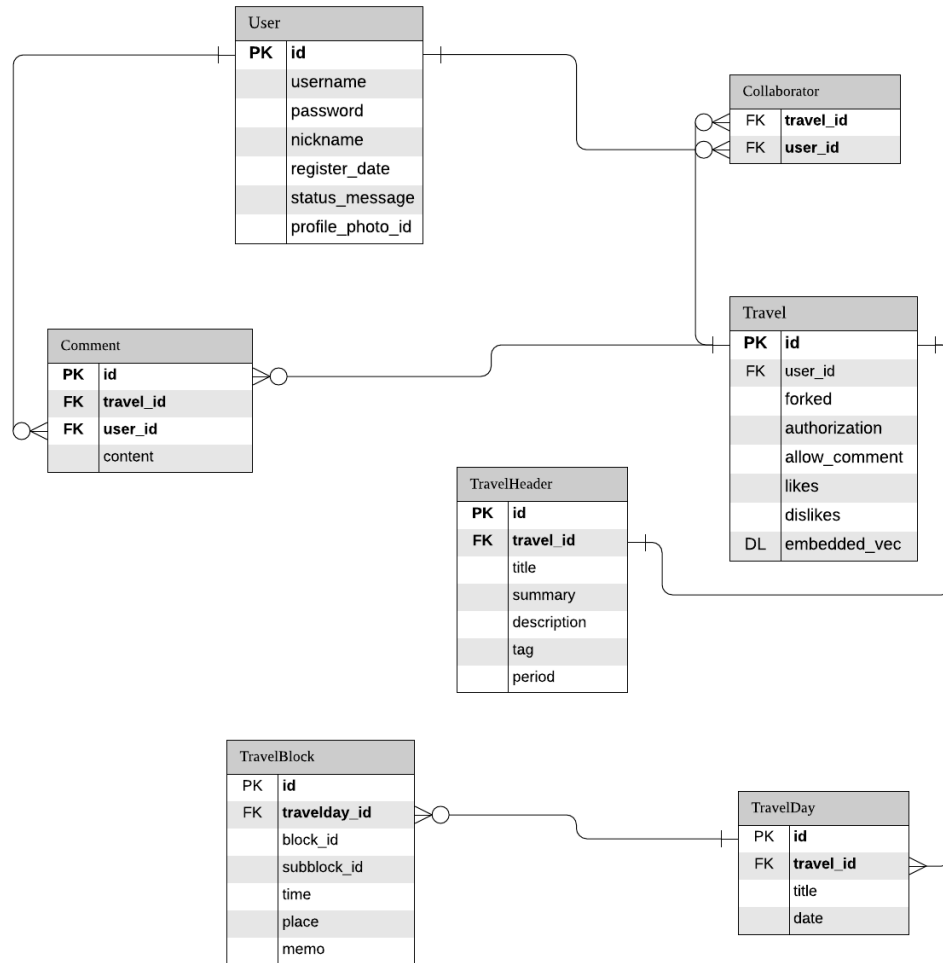
## Plan



# Software Design



# Software Design



# Recommendation(ML Feature)

More like this



2 New Instant Pot Models On The Way, Says Creator Of The Hit Appliance



Instant Pot: The Canadian Kitchen Appliance Blowing People's Minds



14 Ways To Make The Most Of Your Slow Cooker This Season



Slow cooker lessons and tips from Ricardo



Instant Pot Hard-Boiled Eggs Might Just Change Your Life



5 Recipes We're Psyched To Try From The Authorized Instant Pot Cookbook

- Content based filtering(similarity)
  - **Word2Vec**(pretrained) + Smooth Inverse Frequency + Cosine Similarity
  - Google **Universal Sentence Encoder** (pretrained model)
  - Gensim **Doc2Vec**(no official pretrained model)
- Collaborative Filtering
  - Need user click log for the training => hard

# Implementation plan

## Scenario

1. Travel plan created
2. Gather a text data including Title, User review, Tags.
3. Calculate embedded vector for Travel plan
4. Store embedded vector at DB
5. When user investigate other people's plan, recommend next to read by similarity of embedded vector.

Demo



Q & A