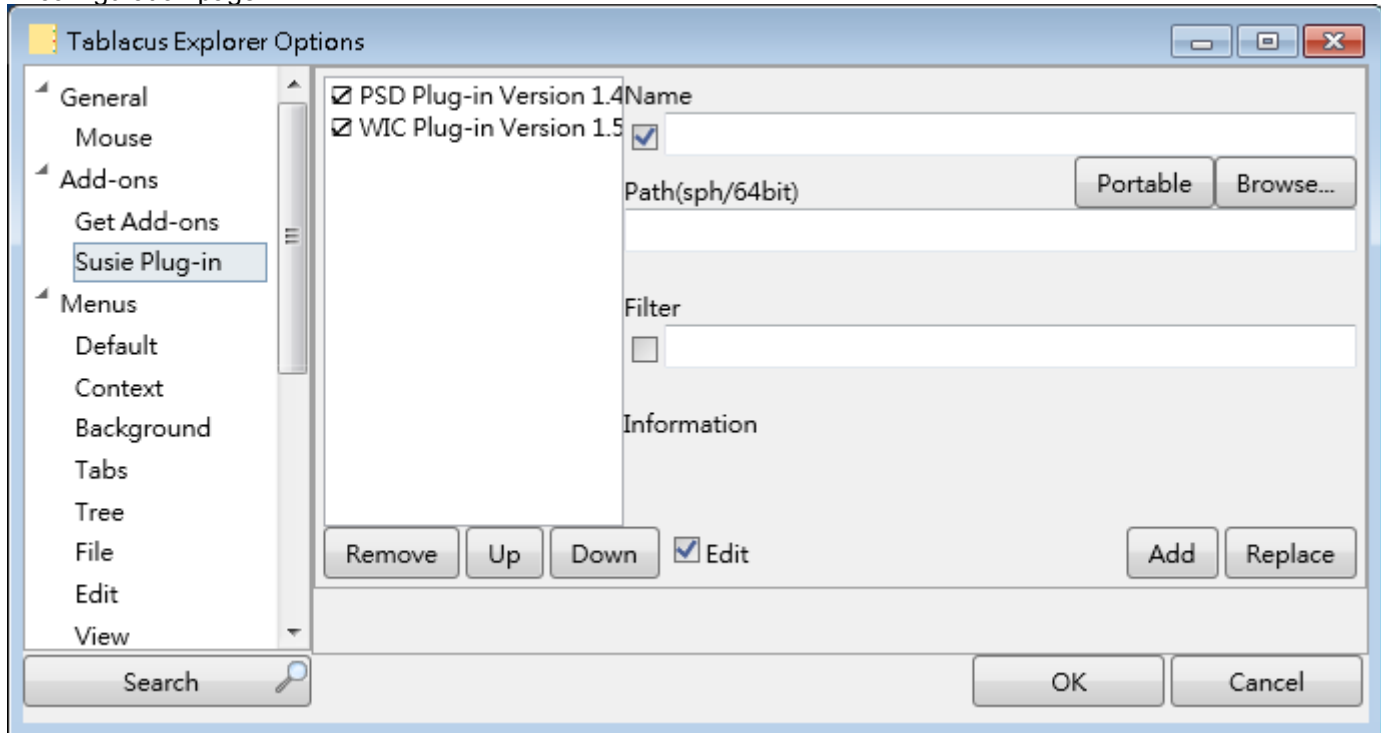


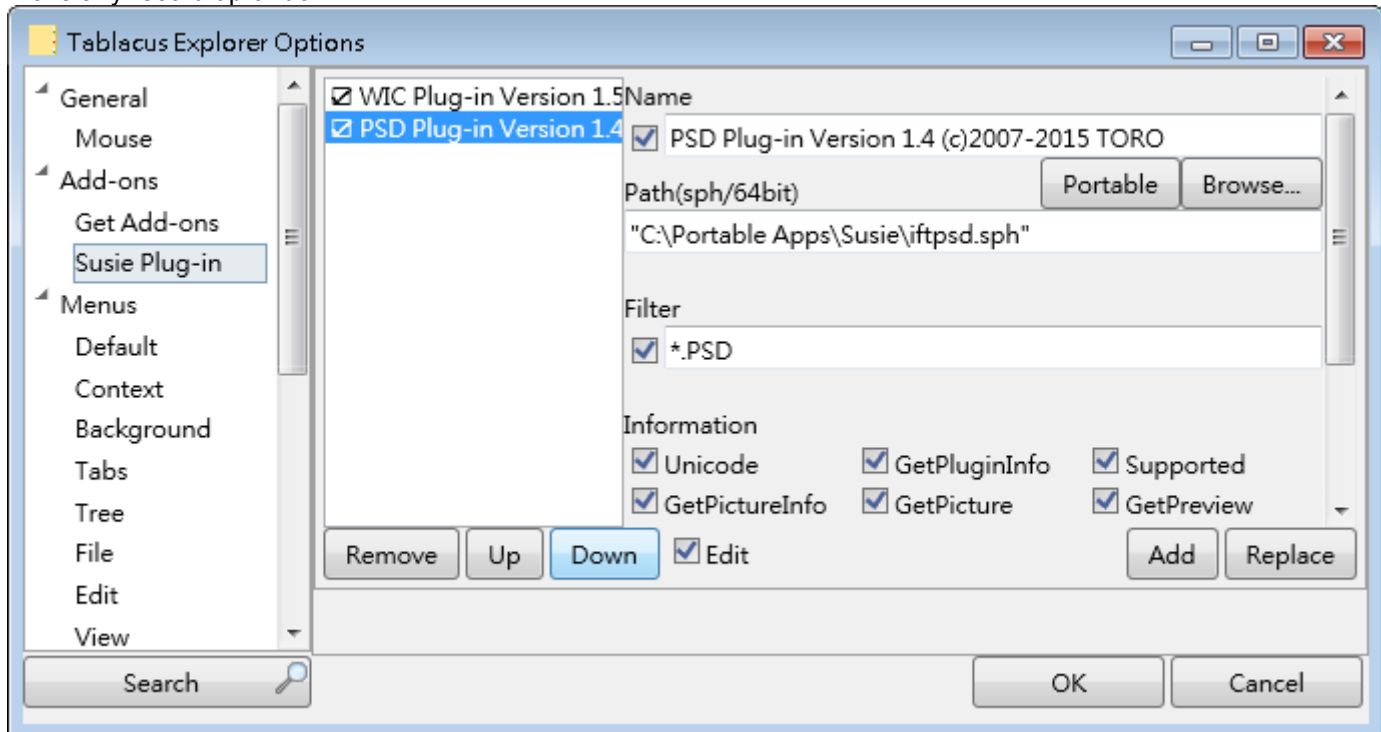
Susie Plug-in 1.06 problems

Problem 1: Unnecessary prompt to save for record moving

In configuration page

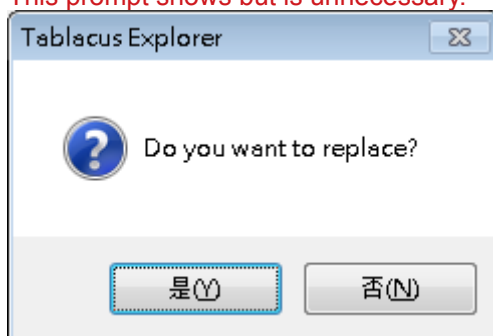


Move any record up or down.



Click OK.

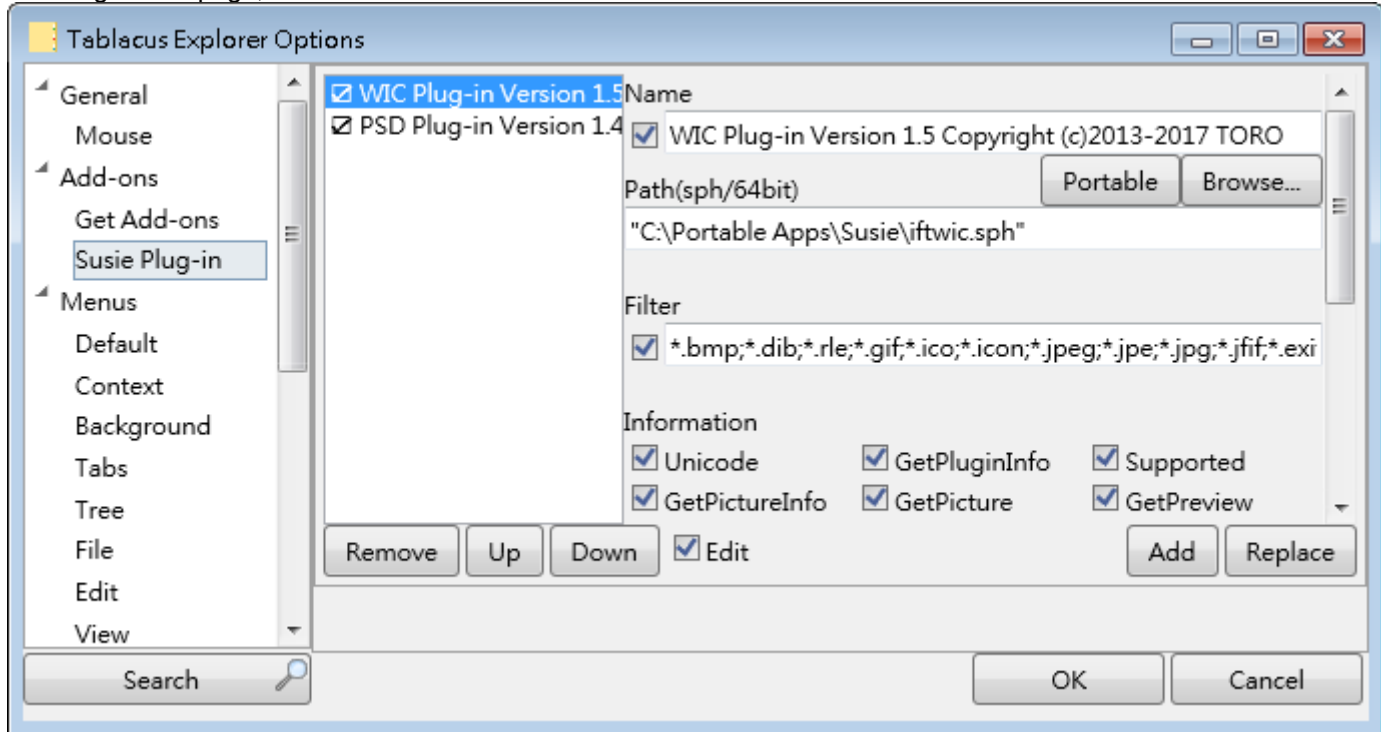
This prompt shows but is unnecessary.



Actually this prompt is incorrect because TE will save the changes whatever user replies.

Problem 2: Incorrectly save configuration changes although user replies no

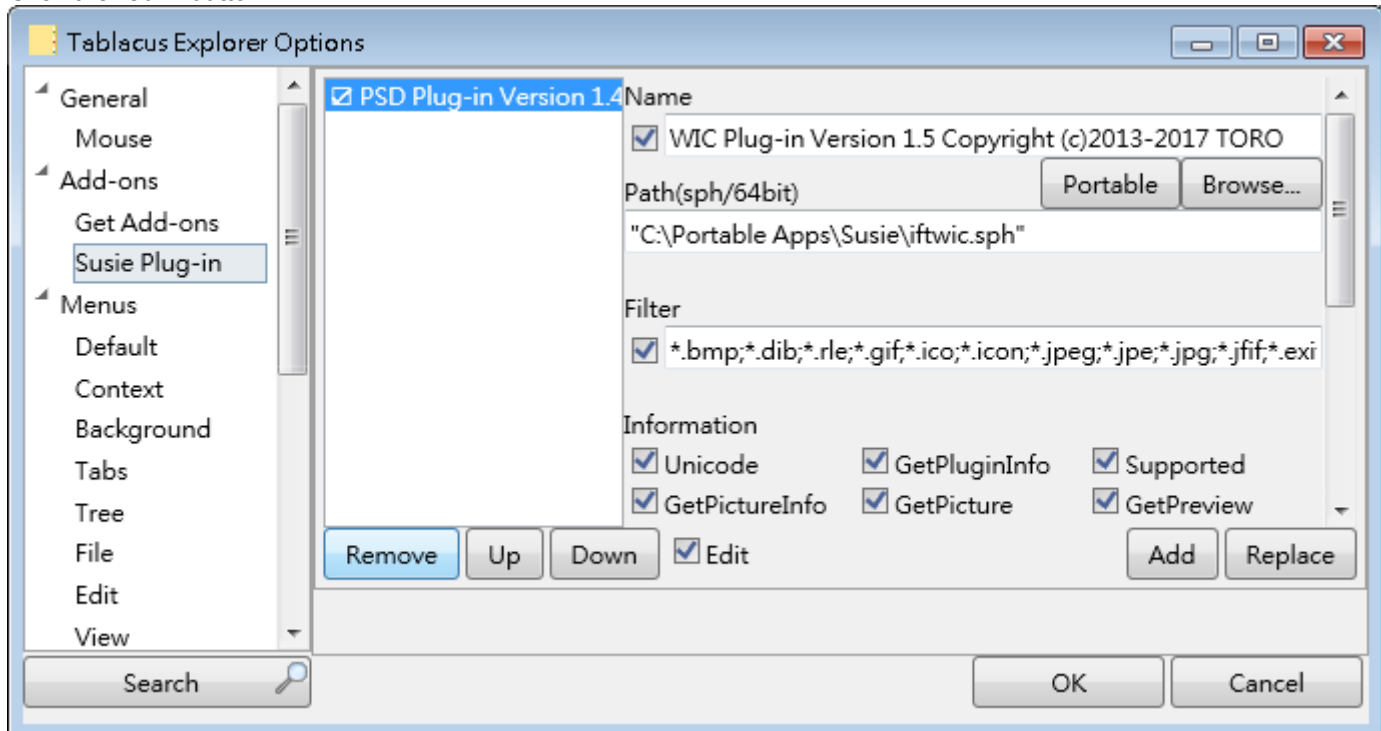
In configuration page, select a record and click "Remove"



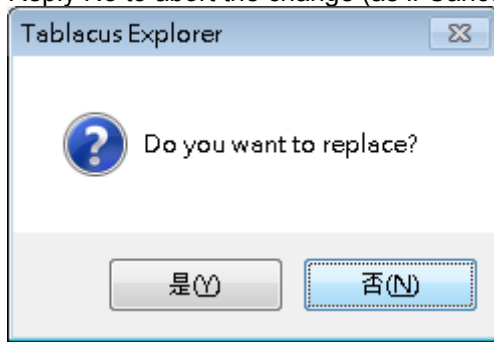
Reply Yes to this prompt



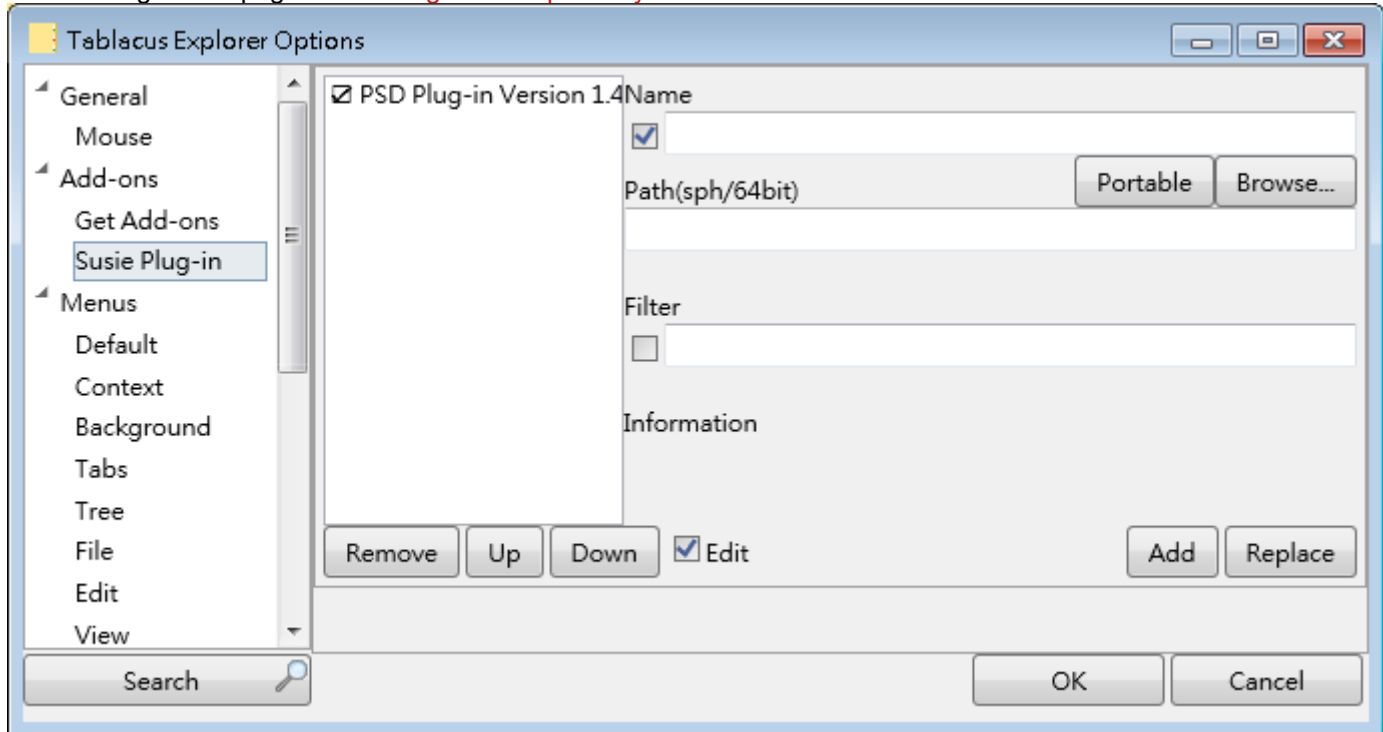
Click the red X button



Reply No to abort the change (as if Cancel button were clicked)



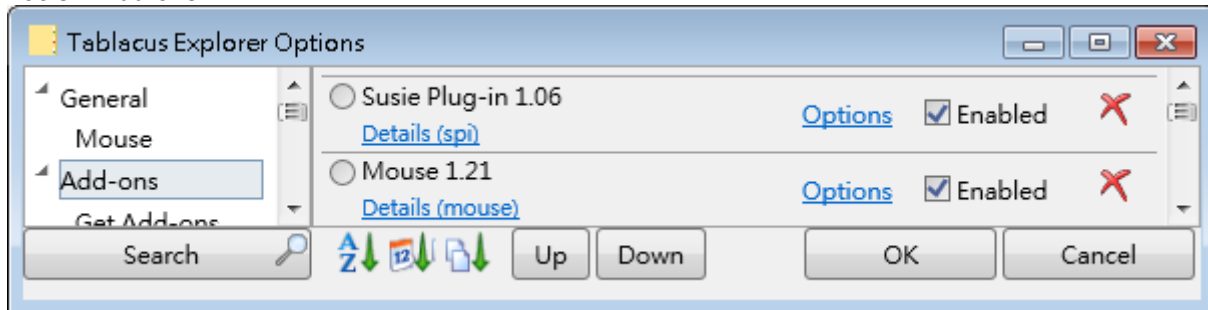
Go to configuration page. The change is unexpectedly saved.



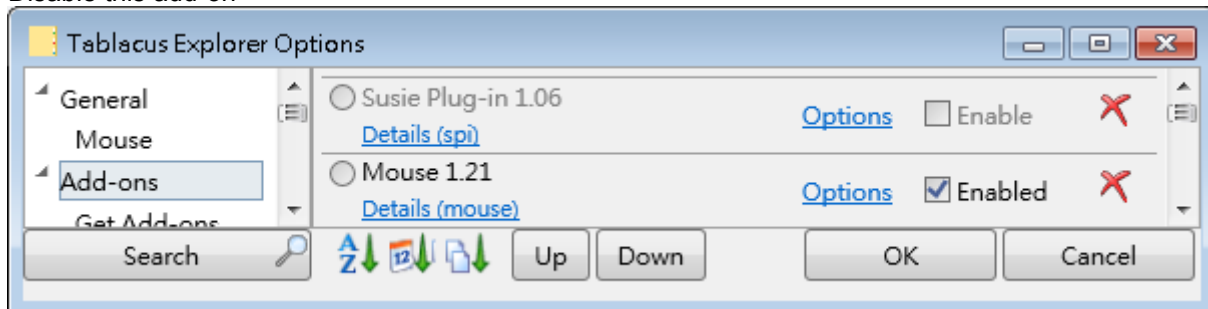
This problem occurs not only for record removal, but also for record addition, update and moving.

Problem 3: TE unexpectedly closes when this add-on is disabled

Tools > Add-ons



Disable this add-on



Click OK. TE unexpectedly closes.