

## RE: PSRemoting with kitchen

Mousa-Infosys, Ayman &lt;ayman.mousa@hpe.com&gt;

Mon 8/9/2021 5:12 PM

To: Tom Gordon &lt;Tom.Gordon@progress.com&gt;

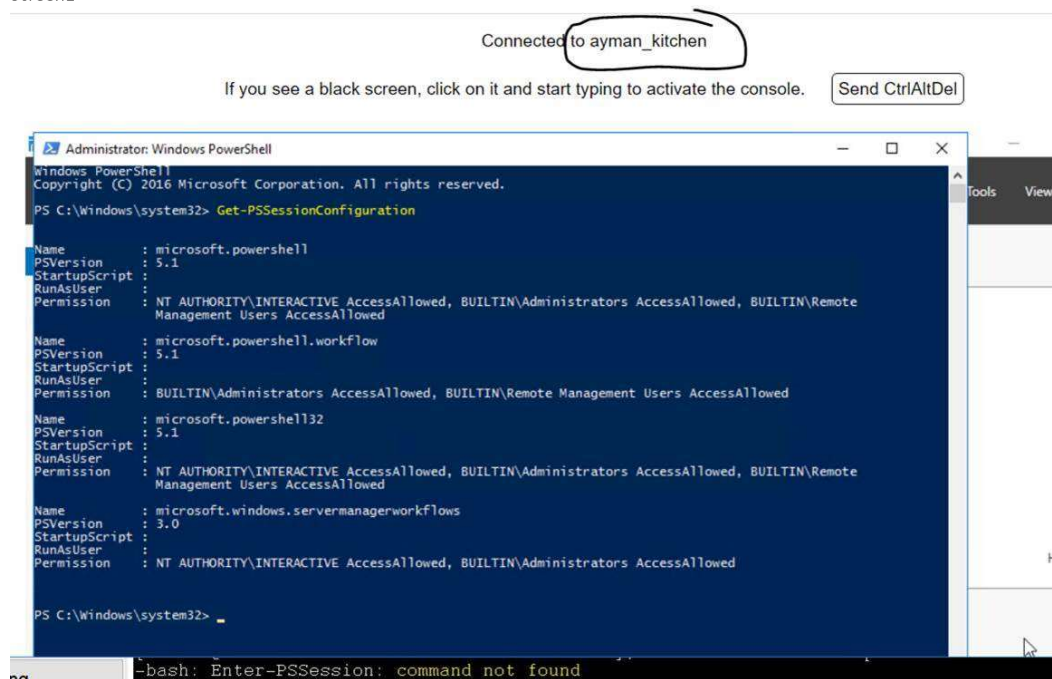
Tom,

Do you know if kitchen test can work with VMware as an option?

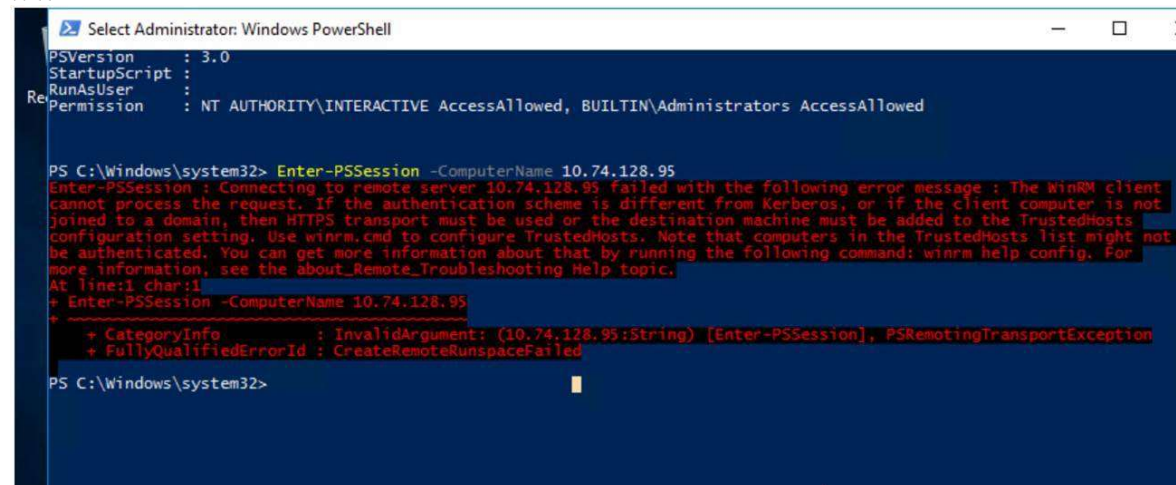
**From:** Mousa-Infosys, Ayman <ayman.mousa@hpe.com>**Sent:** Monday, August 9, 2021 5:04 PM**To:** Tom Gordon <Tom.Gordon@progress.com>; Mousa-Infosys, Ayman <ayman.mousa@hpe.com>**Subject:** RE: PSRemoting with kitchen

See test results

Screen1



Screen 2



Screen 3

```

Administrator: Windows PowerShell
PS C:\Windows\system32>
PS C:\Windows\system32>
PS C:\Windows\system32>
PS C:\Windows\system32> Set-Item WSMan:\localhost\Client\TrustedHosts *
winRM Security Configuration.
This command modifies the TrustedHosts list for the WinRM client. The computers in the TrustedHosts list might not be
authenticated. The client might send credential information to these computers. Are you sure that you want to modify
this list?
[Y] Yes [N] No [S] Suspend [?] Help (default is "Y"): Y
PS C:\Windows\system32> Get-Service -ComputerName localhost -N WinRM | Restart-Service
PS C:\Windows\system32>

```

Screen 4

```

PS C:\Windows\system32> Test-WSMan localhost

wsmanid       : http://schemas.dmtf.org/wbem/wsman/identity/1/wsmanidentity.xsd
ProtocolVersion : http://schemas.dmtf.org/wbem/wsman/1/wsman.xsd
ProductVendor  : Microsoft Corporation
ProductVersion : OS: 0.0.0 SP: 0.0 Stack: 3.0

PS C:\Windows\system32> Test-WSMan 10.74.128.95

wsmanid       : http://schemas.dmtf.org/wbem/wsman/identity/1/wsmanidentity.xsd
ProtocolVersion : http://schemas.dmtf.org/wbem/wsman/1/wsman.xsd
ProductVendor  : Microsoft Corporation
ProductVersion : OS: 0.0.0 SP: 0.0 Stack: 3.0

PS C:\Windows\system32>

```

Screen 5

```

PS C:\Users\mousaa> Enter-PSSession -ComputerName 10.74.128.95 -Credential chefadmin
Enter-PSSession : Connecting to remote server 10.74.128.95 failed with the following error message : The WinRM client
cannot process the request. Default authentication may be used with an IP address under the following conditions: the
transport is HTTPS or the destination is in the TrustedHosts list, and explicit credentials are provided. Use
winrm.cmd to configure TrustedHosts. Note that computers in the TrustedHosts list might not be authenticated. For more
information on how to set TrustedHosts run the following command: winrm help config. For more information, see the
about_Remote_Troubleshooting Help topic.
At line:1 char:1
+ Enter-PSSession -ComputerName 10.74.128.95 -Credential chefadmin
+ ~~~~~
+ CategoryInfo          : InvalidArgument: (10.74.128.95:String) [Enter-PSSession], PSRemotingTransportException
+ FullyQualifiedErrorId : CreateRemoteRunspaceFailed

```

```
PS C:\Users\mousaa>
```

Screen 6

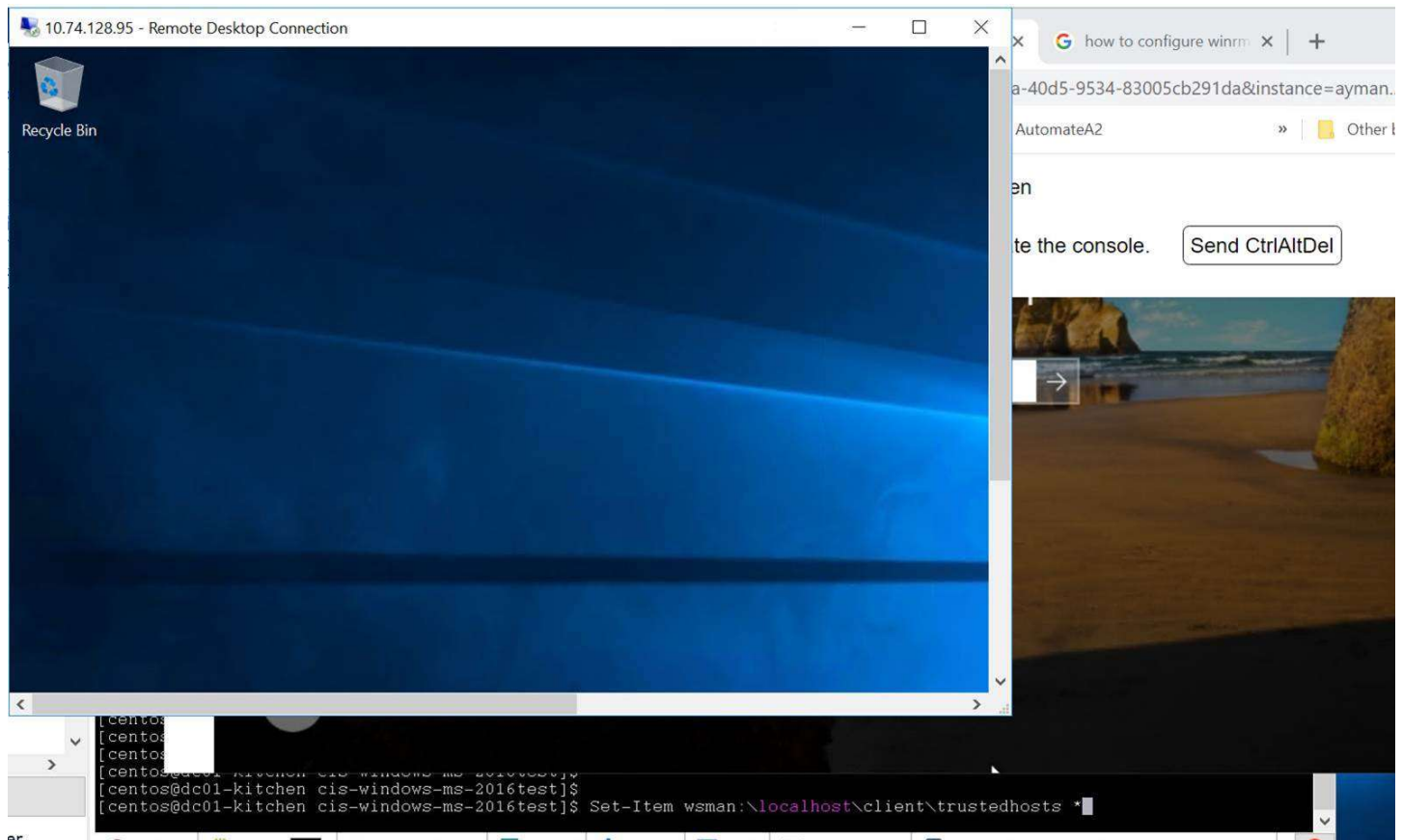
```

PS C:\Users\mousaa> winrm get winrm/config/client
Client
NetworkDelayms = 5000
URLPrefix = wsman
AllowUnencrypted = false [Source="GPO"]
Auth
Basic = false [Source="GPO"]
Digest = false [Source="GPO"]
Kerberos = true
Negotiate = true
Certificate = true
CredSSP = false
DefaultPorts
HTTP = 5985
HTTPS = 5986
TrustedHosts

```

```
PS C:\Users\mousaa>
```

Screen 7 rdp



**From:** Mousa-Infosys, Ayman <[ayman.mousa@hpe.com](mailto:ayman.mousa@hpe.com)>

**Sent:** Friday, August 6, 2021 3:19 PM

**To:** Tom Gordon <[Tom.Gordon@progress.com](mailto:Tom.Gordon@progress.com)>; Mousa-Infosys, Ayman <[ayman.mousa@hpe.com](mailto:ayman.mousa@hpe.com)>

**Subject:** PSRemoting with kitchen

Hi Tom, here is the output for each PS command you asked me to perform, and I was able to kill the process running kitchen -create command to save the instance and tested see below

```
[WIN-I91Q05FQ4EM]: PS C:\Users\chefadmin\Documents> Get-PSSessionConfiguration

Name           : microsoft.powershell
PSVersion      : 5.1
StartupScript  :
RunAsUser      :
Permission     : NT AUTHORITY\INTERACTIVE AccessAllowed, BUILTIN\Administrators AccessAllowed, BUILTIN\Remote
                Management Users AccessAllowed

Name           : microsoft.powershell.workflow
PSVersion      : 5.1
StartupScript  :
RunAsUser      :
Permission     : BUILTIN\Administrators AccessAllowed, BUILTIN\Remote Management Users AccessAllowed

Name           : microsoft.powershell32
PSVersion      : 5.1
StartupScript  :
RunAsUser      :
Permission     : NT AUTHORITY\INTERACTIVE AccessAllowed, BUILTIN\Administrators AccessAllowed, BUILTIN\Remote
                Management Users AccessAllowed

Name           : microsoft.windows.servermanagerworkflows
PSVersion      : 3.0
StartupScript  :
RunAsUser      :
Permission     : NT AUTHORITY\INTERACTIVE AccessAllowed, BUILTIN\Administrators AccessAllowed

[WIN-I91Q05FQ4EM]: PS C:\Users\chefadmin\Documents>
```

Screen #

```

PSVersion      : 5.1
StartupScript  :
RunAsUser      :
Permission     : NT AUTHORITY\INTERACTIVE AccessAllowed, BUILTIN\Administrators AccessAllowed, BUILTIN\Remote
                Management Users AccessAllowed

Name           : microsoft.powershell.workflow
PSVersion      : 5.1
StartupScript  :
RunAsUser      :
Permission     : BUILTIN\Administrators AccessAllowed, BUILTIN\Remote Management Users AccessAllowed

Name           : microsoft.powershell32
PSVersion      : 5.1
StartupScript  :
RunAsUser      :
Permission     : NT AUTHORITY\INTERACTIVE AccessAllowed, BUILTIN\Administrators AccessAllowed, BUILTIN\Remote
                Management Users AccessAllowed

Name           : microsoft.windows.servermanagerworkflows
PSVersion      : 3.0
StartupScript  :
RunAsUser      :
Permission     : NT AUTHORITY\INTERACTIVE AccessAllowed, BUILTIN\Administrators AccessAllowed

[WIN-I9IQ05FQ4EM]: PS C:\Users\chefadmin\Documents> Enter-PSSession -ComputerName 10.74.128.128
Enter-PSSession: You are currently in a Windows PowerShell PSSession and cannot use the Enter-PSSession cmdlet to
enter another PSSession.
+ CategoryInfo          : InvalidArgument (:) [Enter-PSSession], ArgumentException
+ FullyQualifiedErrorId : RemoteHostDoesNotSupportPushRunspace,Microsoft.PowerShell.Commands.EnterPSSessionCommand

[WIN-I9IQ05FQ4EM]: PS C:\Users\chefadmin\Documents>

```

Screen # 3

```

[WIN-I9IQ05FQ4EM]: PS C:\Users\chefadmin\Documents> Restart-service WinRM
Processing data for a remote command failed with the following error message: The I/O operation has been aborted because of either a thread
or an application request. For more information, see the about_Remote_Troubleshooting Help topic.
PS C:\Windows\system32>

```

Screen #4

Get-Service -ComputerName localhost -Name WinRM | Restart-Service

With either stop/start or restart

```

PS C:\Windows\system32> Get-Service -ComputerName localhost -Name WinRM | Restart-Service
PS C:\Windows\system32> Get-Service -ComputerName localhost -Name WinRM | stop-Service
PS C:\Windows\system32> Get-Service -ComputerName localhost -Name WinRM | start-Service
PS C:\Windows\system32> Get-Service -ComputerName localhost -Name WinRM | stop-Service
PS C:\Windows\system32> Get-Service -ComputerName localhost -Name WinRM | start-Service

```

Screen #5

```

PS C:\Windows\system32>
PS C:\Windows\system32>
PS C:\Windows\system32> Test-WSMan localhost

wsmanid       : http://schemas.dmtf.org/wbem/wsman/identity/1/wsmanidentity.xsd
ProtocolVersion : http://schemas.dmtf.org/wbem/wsman/1/wsman.xsd
ProductVendor  : Microsoft Corporation
ProductVersion : OS: 0.0.0 SP: 0.0 Stack: 3.0

PS C:\Windows\system32> Test-

```

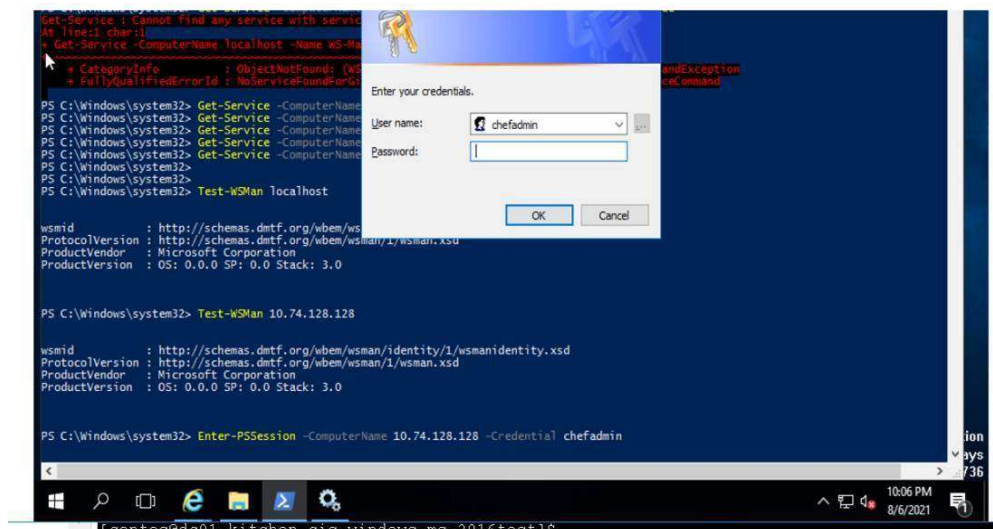
Screen #6

Execute **Enter-PSSession -ComputerName 10.74.128.128 -Credential chefadmin**

**Password popup windows displayed see below..... and When I enter the password I am logged in with errors our**

If you see a black screen, click on it and start typing to activate the console.

Send Ctrl+Alt+Del



Tried it from a windows job server

```
PS C:\Users\mousaa> Enter-PSession -ComputerName 10.74.128.128 -Credential chefdadmin
```

Enter-PSession : Connecting to remote server 10.74.128.128 failed with the following error message : The WinRM client cannot process the request. Default authentication may be used with an IP address under the following conditions: the transport is HTTPS or the destination is in the TrustedHosts list, and explicit credentials are provided. Use winrm.cmd to configure TrustedHosts. Note that computers in the TrustedHosts list might not be authenticated. For more information on how to set TrustedHosts run the following command: winrm help config. For more information, see the about\_Remote\_Troubleshooting Help topic.

At line:1 char:1

```
+ Enter-PSession -ComputerName 10.74.128.128 -Credential chefdadmin
```

```
+ ~~~~~
+ CategoryInfo          : InvalidArgument: (10.74.128.128:String) [Enter-PSession], PSRemotingTransportException
+ FullyQualifiedErrorId : CreateRemoteRunspaceFailed
```

```
PS C:\Users\mousaa>
```