



ENCRYPTION

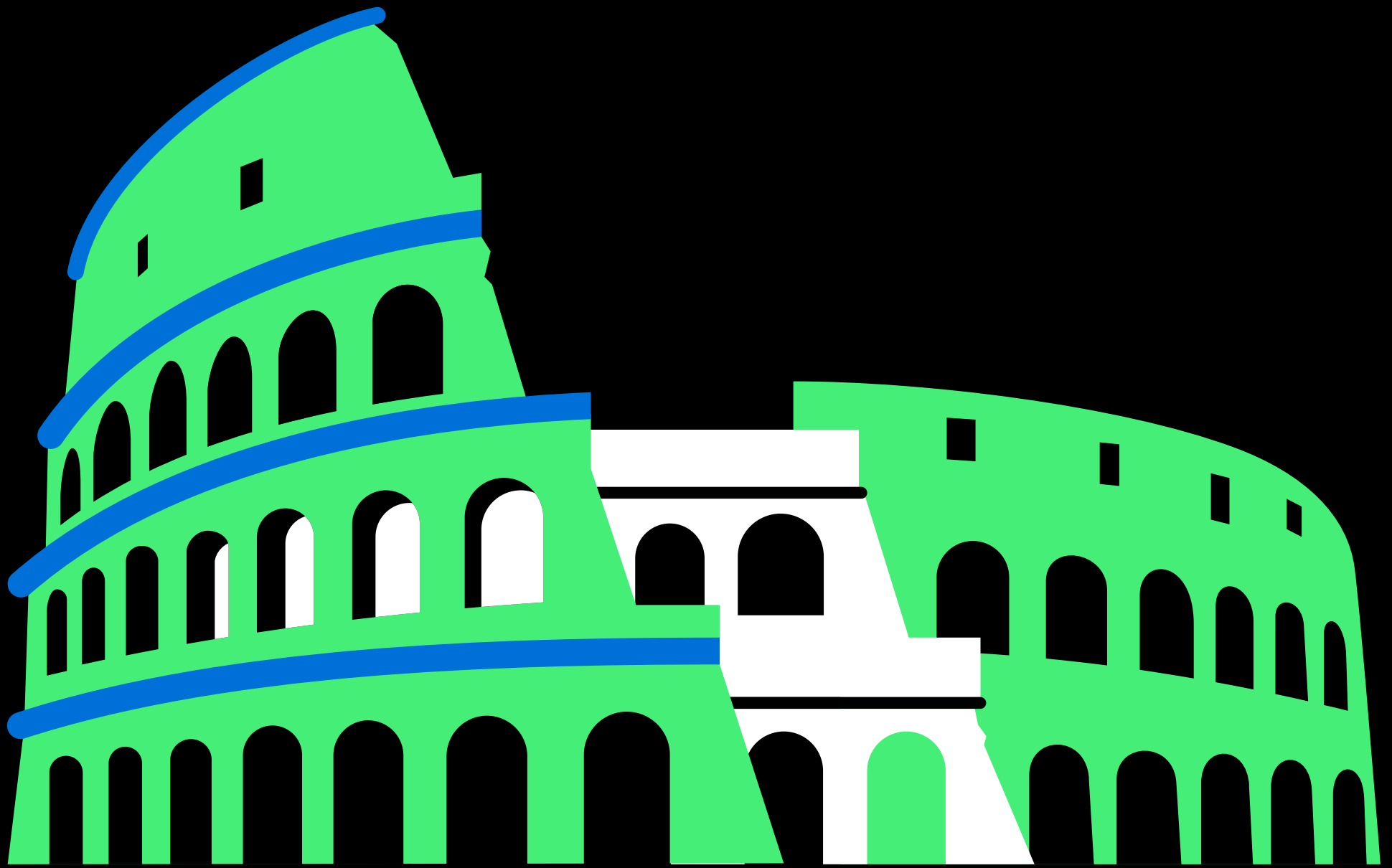
THE ONE THAT YOU DON'T
KNOW



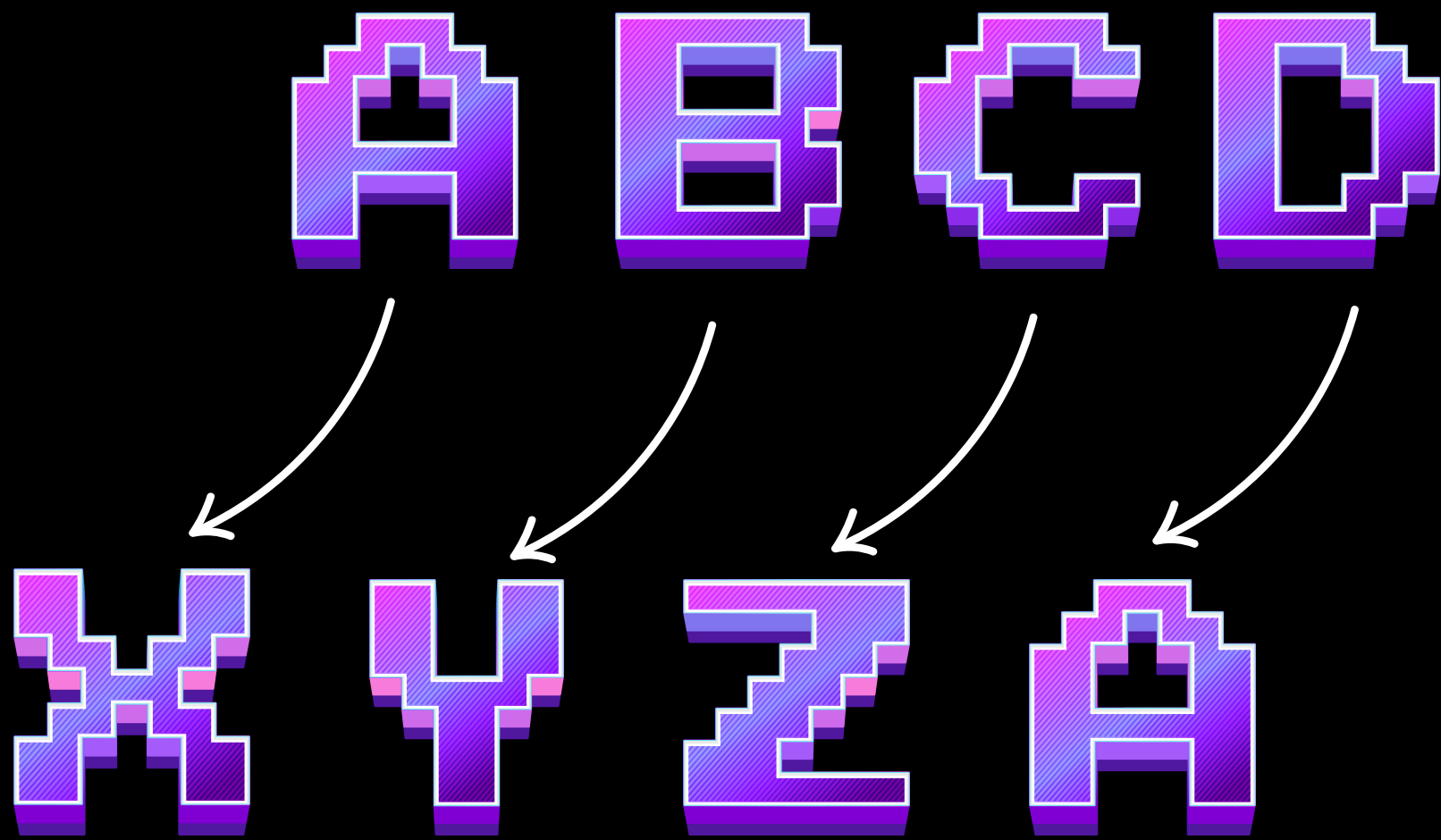


ENCRYPTION IS BASICALLY HIDING THE MEANING OF A MESSAGE, THROUGH SOME ALGORITHMS.

ENCRYPTION IS HEAVILY USED IN **DATA TRANSFER** OVER THE INTERNET.



ONE OF THE FIRST ENCRYPTION
TECHNIQUES WERE USED BY THE
GREEKS AND THE SPARTANS



BUT THEY USED A DIFFERENT
PROCESS THAN THE ONES
KNOWN TODAY WHERE WE
REPLACE THE CHARACTERS WITH
SOME OTHER CHARACTERS



WHEN THE PARCHMENT WAS DISCOVERED, THE MESSAGE LOOKED LIKE **GIBBERISH**.

ALTHOUGH THIS WOULDN'T WORK IN MODERN TIMES, IT WAS AN EFFECTIVE METHOD

6. Zigzag Conversion

Medium

6.5K

12.9K



Companies

The string "PAYPALISHIRING" is written in a zigzag pattern on a given number of rows like this: (you may want to display this pattern in a fixed font for better legibility)

```
P   A   H   N
A P L S I I G
Y   I   R
```

And then read line by line: "PAHNAPLSIIGYIR"

THIS QUESTION ON LEETCODE IS ALSO BASED ON THE SAME CONCEPT.