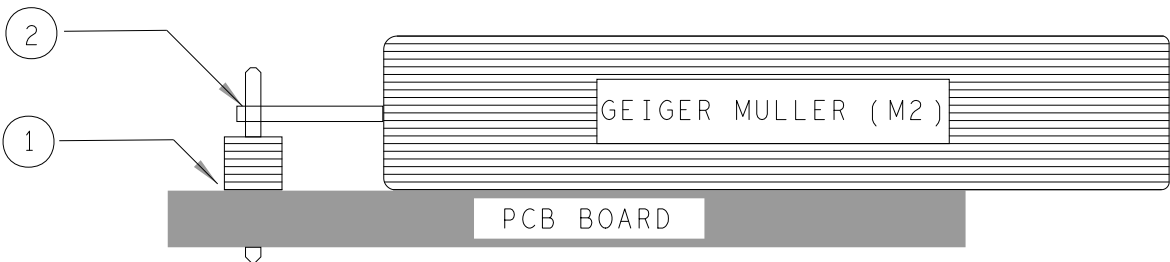
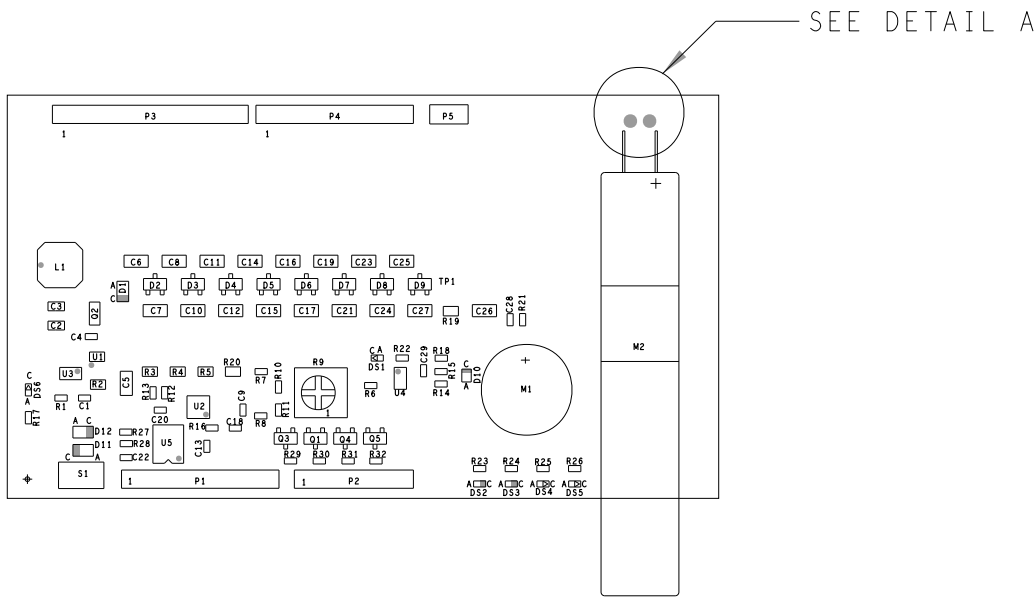


REVISIONS			
REV	DESCRIPTION	DATE	APPROVED
A	INITIAL RELEASE	28NOV19	J.PENAFLOR
B	ECR-093893	18MAY20	J.PENAFLOR
C	ECR-097939	22AUG20	J.PENAFLOR
D	ECR-098625	12SEP20	J.PENAFLOR

ASSEMBLY NOTES:

1. BOARD ACCEPTABILITY PER ANALOG DEVICES, INC. SPECIFICATION TST00119 (LATEST REVISION).
2. REPAIRS PER IPC-7711/21(LATEST REVISION) ARE ALLOWED.
3. REPAIRS ARE NOT ALLOWED IN SOLDERMASK FREE AREAS ON EITHER SIDE OF THE BOARD.
4. RoHS COMPLIANCE: ASSEMBLY VENDOR SHOULD ASSURE COMPLIANCE WITH LEAD-FREE AND RoHS PCB ASSEMBLY STANDARDS (EU RoHS DIRECTIVE 2002/95/EC).
5. DO NOT TRIM/CUT EXCESS PINS OF P1, P2, P3 AND P4
6. SEPARATE THE BOARDS AFTER ASSEMBLY
7. INSTALL SHUNT CONNECTOR (M036050) TO PIN 1 AND 2 OF P5



HEADER AND GEIGER INSTALLATION

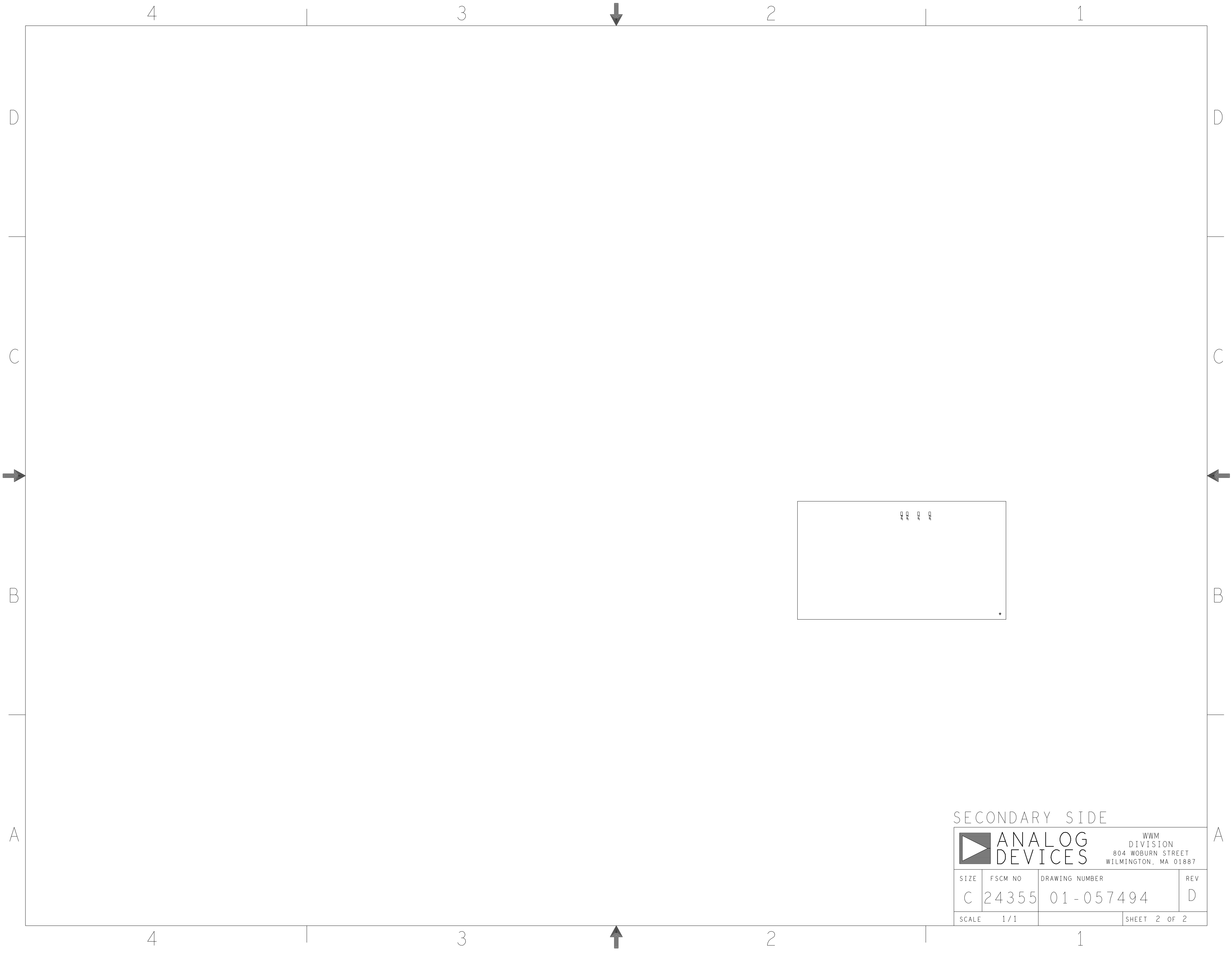
1. MOUNT HEADER CONNECTOR (TSW-102-09-G-S) FIRST AND SOLDER IT DOWN.
2. LAYDOWN GEIGER (M2) ON THE PCB WITH PROPER POLARITY ORIENTATION THEN SOLDER THE 2 PINS OF M2 TO THE HEADER CONNECTOR.
3. STRAP THE COMPONENT M2 TO THE PCB SLOTTED HOLES USING CABLE TIE (M044354). CUT THE EXCESS CABLE TIE.



DETAIL A

PRIMARY SIDE

UNLESS OTHERWISE SPECIFIED DIMENSIONS ARE IN INCHES TOLERANCES DECIMALS FRACTIONS ANGLES .XX -.010 --1/32 -- 2 .XXX -.005 .XXXX -.0050	APPROVAL		DATE		<div><div></div><div>ANALOG DEVICES</div></div> <div>WWM DIVISION 804 WOBURN STREET WILMINGTON, MA 01887</div>							
	TEMPLATE ENGINEER											
	HARDWARE SERVICES M. JOSE		04OCT19		TITLE ASSEMBLY EVAL - CN0536 - ARDZ CUSTOMER EVAL BOARD Z							
	HARDWARE SYSTEMS											
MATERIAL	TEST ENGINEER				SIZE C							
	COMPONENT ENGINEER A. AGENA		04OCT19						FSCM NO 24355			
	TEST PROCESS											
	HARDWARE RELEASE K. JABATAN		04OCT19									
FINISH	DESIGNER M. VALE		04OCT19		REV D							
	PTD ENGINEER J. PENAFLOR		28NOV19									
	CHECKER											
DO NOT SCALE DWG				SCALE 1 / 1		SHEET 1 OF 2						



SECONDARY SIDE

<div><div><div></div></div><div>ANALOG DEVICES</div></div> <div>WWM DIVISION 804 WOBURN STREET WILMINGTON, MA 01887</div>			
SIZE	FSCM NO	DRAWING NUMBER	REV
C	24355	01-057494	D
SCALE	1 / 1	SHEET 2 OF 2	