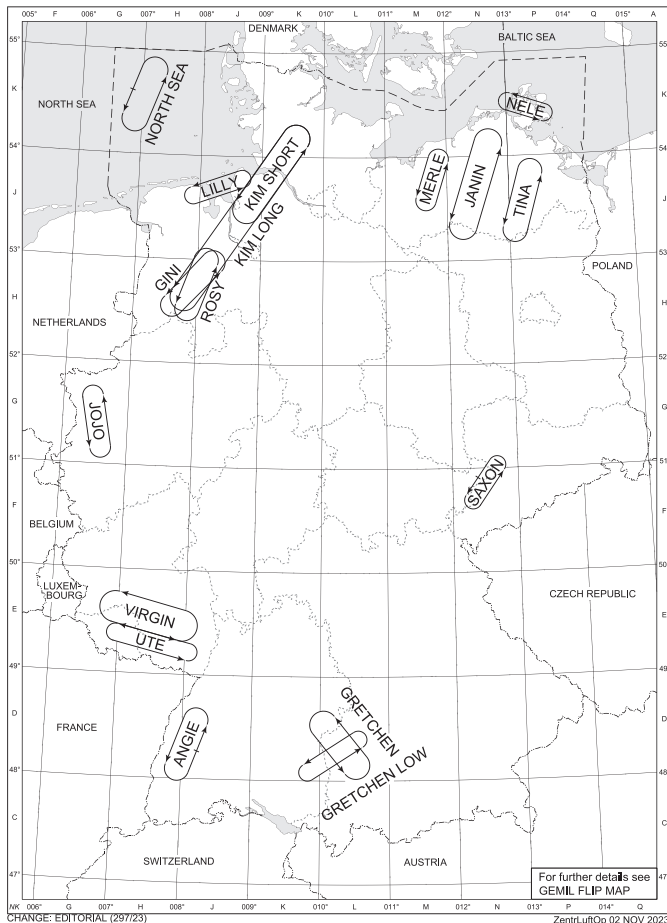
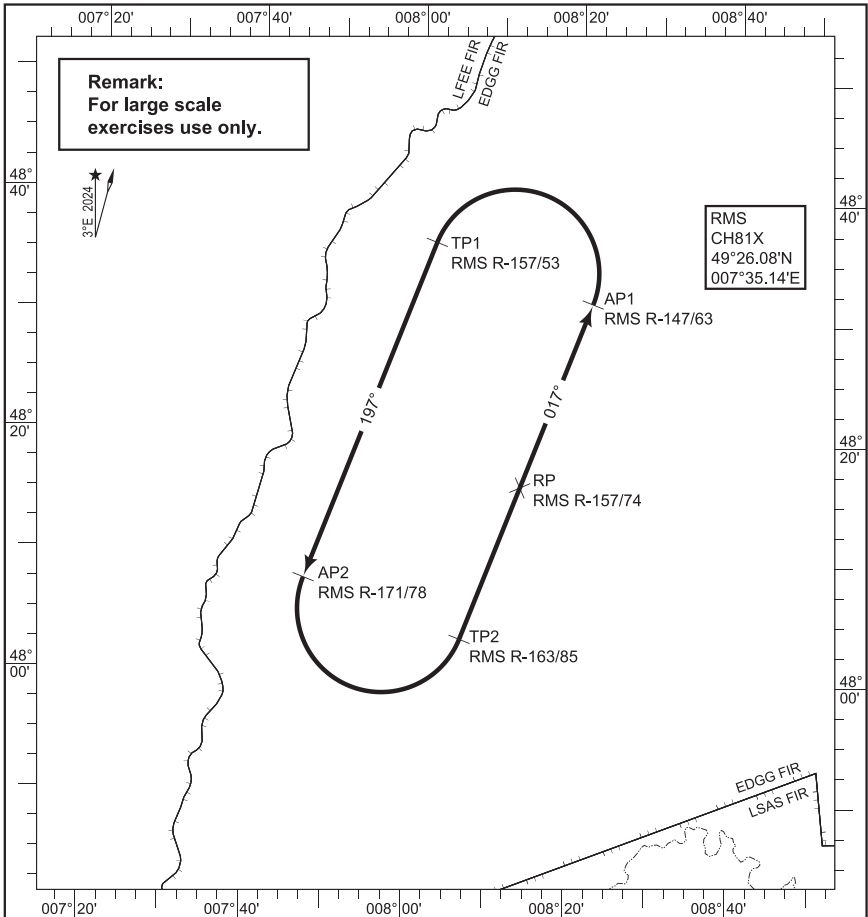


# 1. Air Refuelling Anchors

## Note

The use of other levels than published regarding Air Refuelling Anchors may be possible depending on weather and/or air traffic situation.





**Remark:**  
For large scale  
exercises use only.

RMS  
CH81X  
49°26.08'N  
007°35.14'E

**Anchor Points:**

- AP 1 = RMS R-147/63 DME  
48°31.49'N 008°21.79'E
- TP 1 = RMS R-157/53 DME  
48°36.30'N 008°02.00'E
- AP 2 = RMS R-171/78 DME  
48°08.10'N 007°46.70'E
- TP 2 = RMS R-163/85 DME  
48°03.34'N 008°06.34'E

**Rendezvous Point:** RP = RMS R-157/74 DME  
48°16.08'N 008°13.29'E

**Air Refuelling**  
Initial Point (ARIP): not defined

**Magnetic course:** 017° / 197°

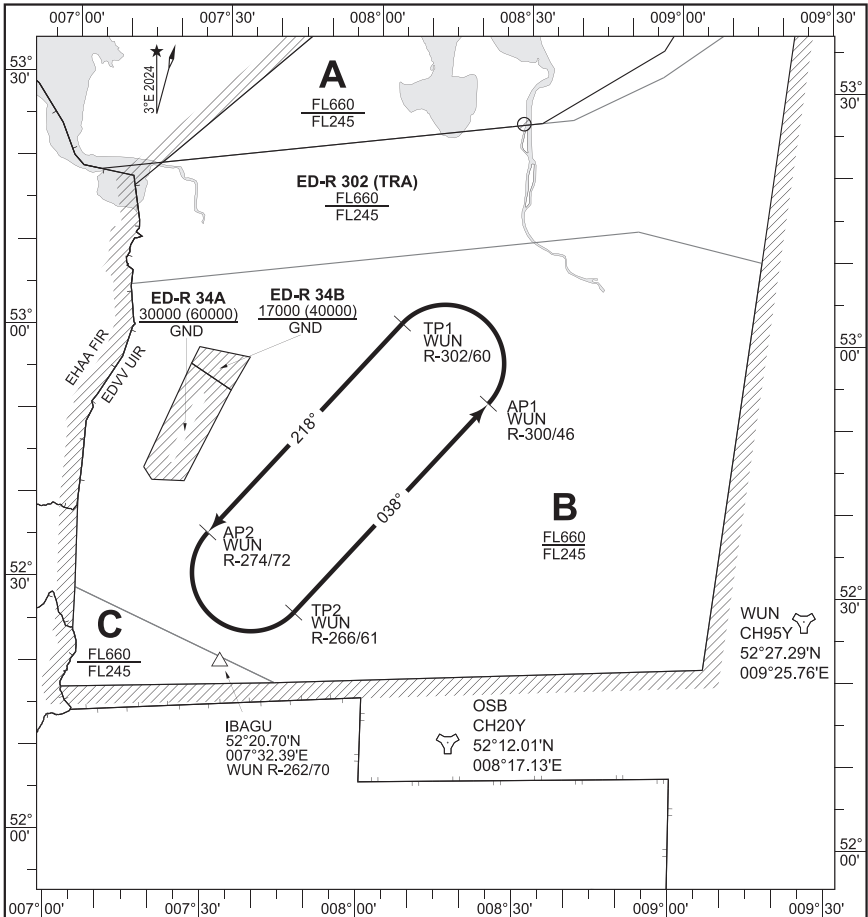
**Leg length:** 30 NM  
**Leg separation:** 14 NM

**Level block:** FL200 - FL230

**Refuelling base level:** FL210

CHANGE: REVISED CHART (07/6/24)

ZenitLutOP: 18/4PR 2024



Anchor Points: AP 1 = WUN R-300/46 DME  
 52°52.42'N 008°23.12'E  
 TP 1 = WUN R-302/60 DME  
 53°01.64'N 008°05.72'E  
 AP 2 = WUN R-274/72 DME  
 52°35.97'N 007°29.05'E  
 TP 2 = WUN R-266/61 DME  
 52°26.85'N 007°46.41'E

Rendezvous Point: not defined

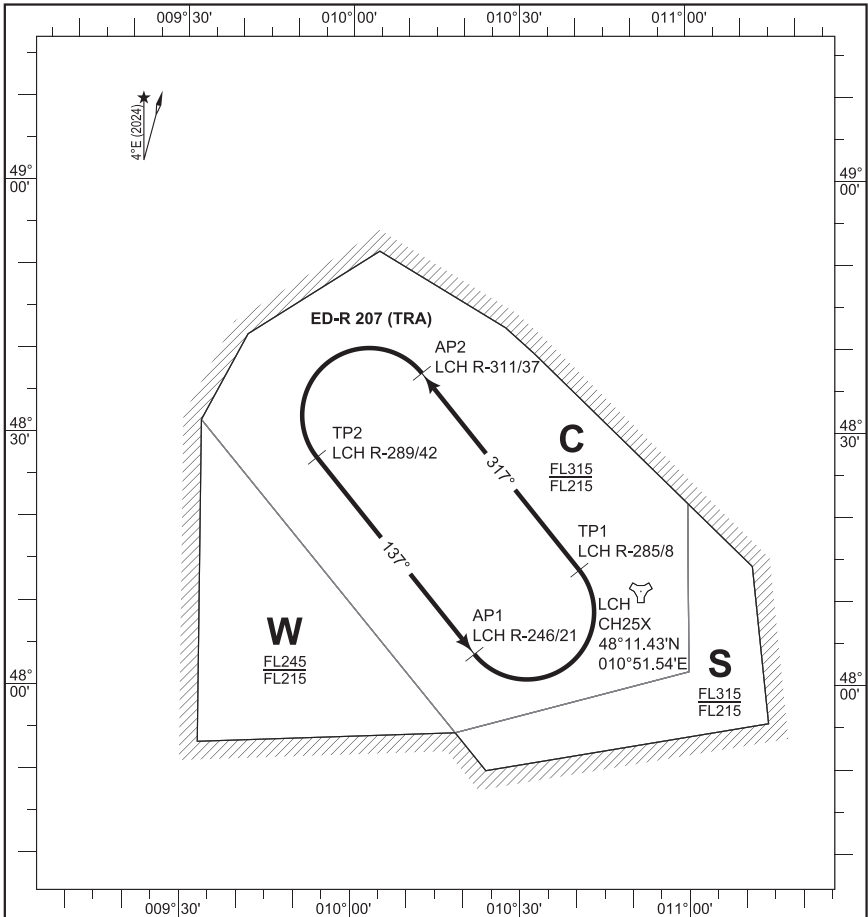
Air Refuelling  
 Initial Point (ARIP): not defined

Magnetic course: 038° / 218°

Leg length: 34 NM  
 Leg separation: 14 NM  
 Level block: FL270 - FL300  
 Refuelling base level: FL290

CHANGE: REVISED CHART (076/24)

ZenitLutOp: 18 APR 2024



Anchor Points:

AP 1 = LCH R-246/21 DME  
48°03.99'N 010°21.97'E

TP 1 = LCH R-285/8 DME  
48°13.98'N 010°40.62'E

AP 2 = LCH R-311/37 DME  
48°37.37'N 010°12.45'E

TP 2 = LCH R-289/42 DME  
48°27.31'N 009°53.74'E

Rendezvous Point: not defined

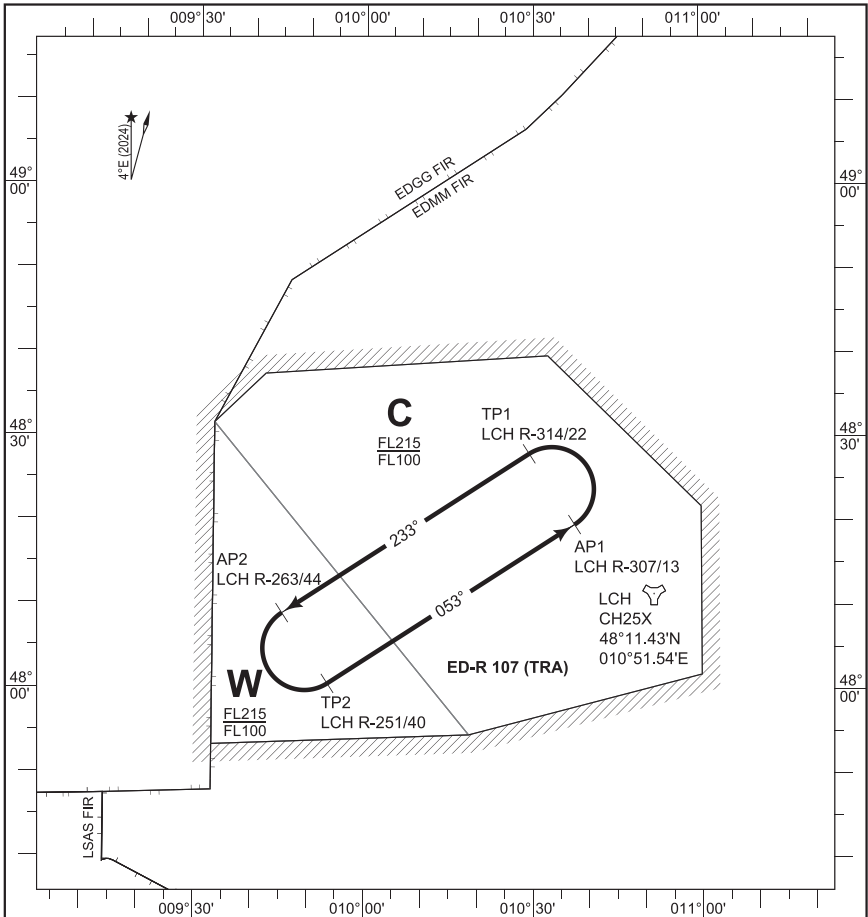
Air Refuelling  
Initial Point (ARIP): not defined

Magnetic course: 137° / 317°

Leg length: 30 NM  
Leg separation: 16 NM

Level block: FL270 - FL300

Refuelling base level: FL290



Anchor Points:

AP 1 = LCH R-307/13 DME  
 48°19.66'N 010°37.40'E

TP 1 = LCH R-314/22 DME  
 48°28.07'N 010°29.31'E

AP 2 = LCH R-263/44 DME  
 48°09.04'N 009°45.32'E

TP 2 = LCH R-251/40 DME  
 48°00.68'N 009°53.48'E

Rendezvous Point: not defined

Air Refuelling  
 Initial Point (ARIP): not defined

Magnetic course: 053° / 233°

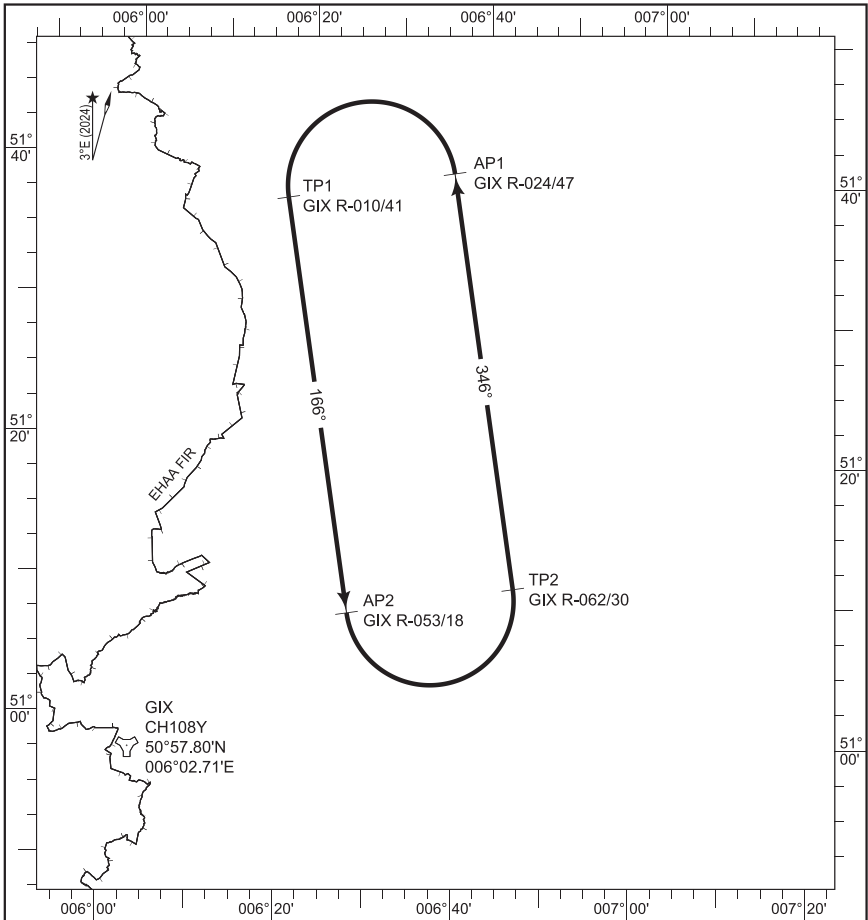
Leg length: 35 NM  
 Leg separation: 10 NM

Level block: FL110 - FL150

Refuelling base level: FL130

CHANGE: REVISED CHART (07/6/24)

ZenitLufOp: 18/APR 2024



Anchor Points:

AP 1 = GIX R-024/47 DME  
 51°39.85'N 006°36.38'E

TP 1 = GIX R-010/41 DME  
 51°37.55'N 006°17.48'E

AP 2 = GIX R-053/18 DME  
 51°08.15'N 006°26.71'E

TP 2 = GIX R-062/30 DME  
 51°10.42'N 006°45.43'E

Rendezvous Point: not defined

Air Refuelling  
 Initial Point (ARIP): not defined

Magnetic course: 346° / 166°

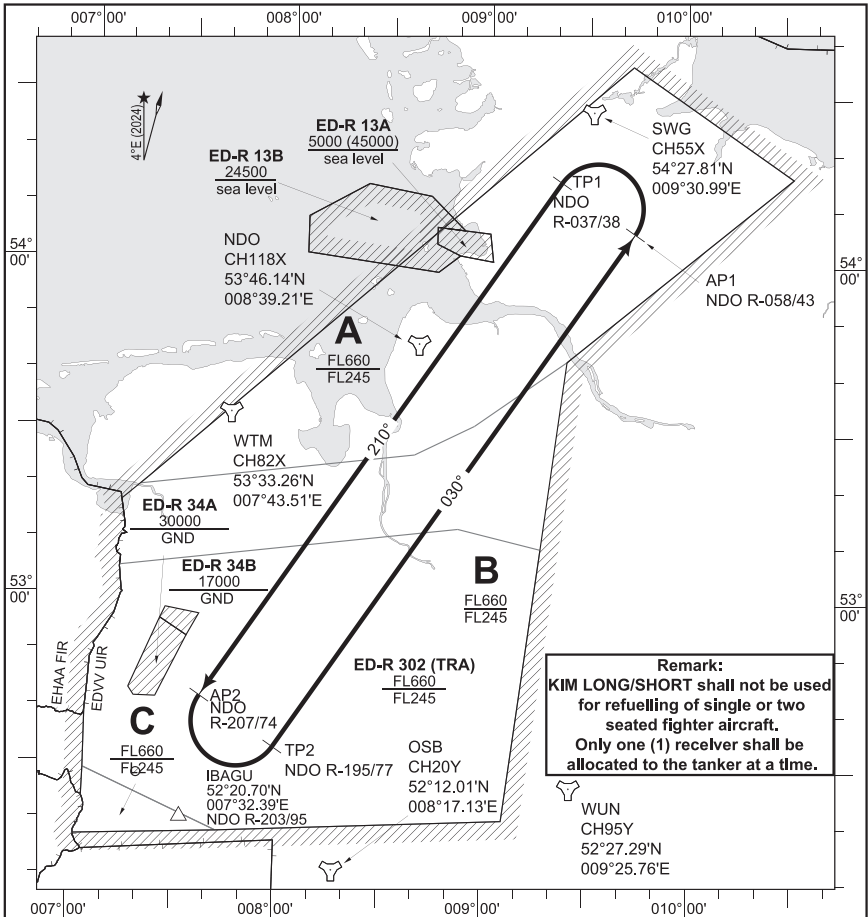
Leg length: 30 NM  
 Leg separation: 12 NM

Level block: FL270 - FL300

Refuelling base level: FL290

CHANGE: REVISED CHART (07/6/24)

ZenitLutOp: 18/APR 2024



**Remark:**  
**KIM LONG/SHORT shall not be used for refuelling of single or two seated fighter aircraft. Only one (1) receiver shall be allocated to the tanker at a time.**

Anchor Points: AP 1 = NDO R-058/43 DME  
 54°06.18'N 009°43.81'E  
 TP 1 = NDO R-037/38 DME  
 54°15.28'N 009°21.43'E  
 AP 2 = NDO R-207/74 DME  
 52°42.42'N 007°36.96'E  
 TP 2 = NDO R-195/77 DME  
 52°33.64'N 007°58.91'E

Rendezvous Point: not defined

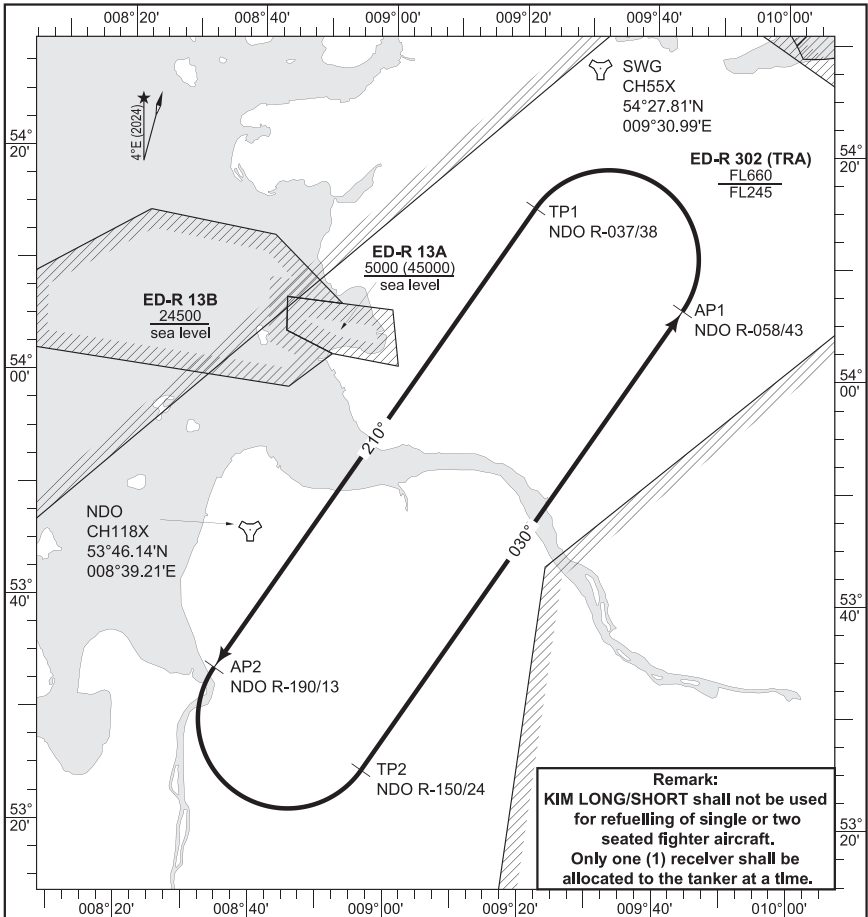
Air Refuelling  
 Initial Point (ARIP): ARIP North = SWG TACAN  
 ARIP South = IBAGU

Magnetic course: 030° / 210°

Leg length: 112 NM  
 Leg separation: 16 NM  
 Level block: FL270 - FL300  
 Refuelling base level: FL290

CHANGE: REVISED CHART (076/24)

ZenitLutOp: 18/APR 2024



**Remark:**  
**KIM LONG/SHORT shall not be used for refuelling of single or two seated fighter aircraft.**  
**Only one (1) receiver shall be allocated to the tanker at a time.**

**Anchor Points:**

AP 1 = NDO R-058/43 DME  
 54°06.26'N 009°43.92'E

TP 1 = NDO R-037/38 DME  
 54°15.27'N 009°21.43'E

AP 2 = NDO R-190/13 DME  
 53°33.81'N 008°34.33'E

TP 2 = NDO R-150/24 DME  
 53°24.95'N 008°56.62'E

**Rendezvous Point:** not defined

**Air Refuelling Initial Point (ARIP):** ARIP North = SWG TACAN  
 ARIP South = NIL

**Magnetic course:** 030° / 210°

**Leg length:** 50 NM

**Leg separation:** 16 NM

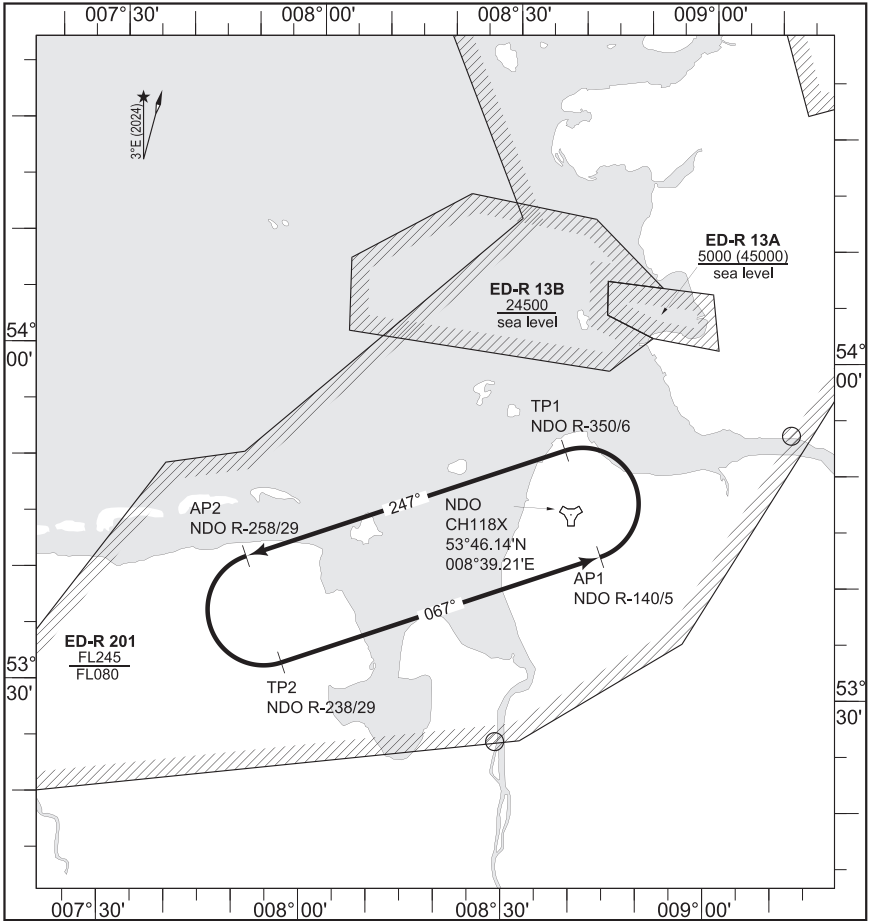
**Level block:** FL270 - FL300

**Refuelling base level:** FL290

CHANGE: REVISED CHART (076/24)

ZentLuitOp: 18 APR 2024





Anchor Points: AP 1 = NDO R-140/5 DME  
 53°42.43'N 008°43.76'E  
 TP 1 = NDO R-350/6 DME  
 53°51.83'N 008°38.09'E  
 AP 2 = NDO R-258/29 DME  
 53°41.57'N 007°50.58'E  
 TP 2 = NDO R-238/29 DME  
 53°32.21'N 007°56.41'E

Rendezvous Point: not defined

Air Refuelling  
 Initial Point (ARIP): not defined

Magnetic course: 067° / 247°

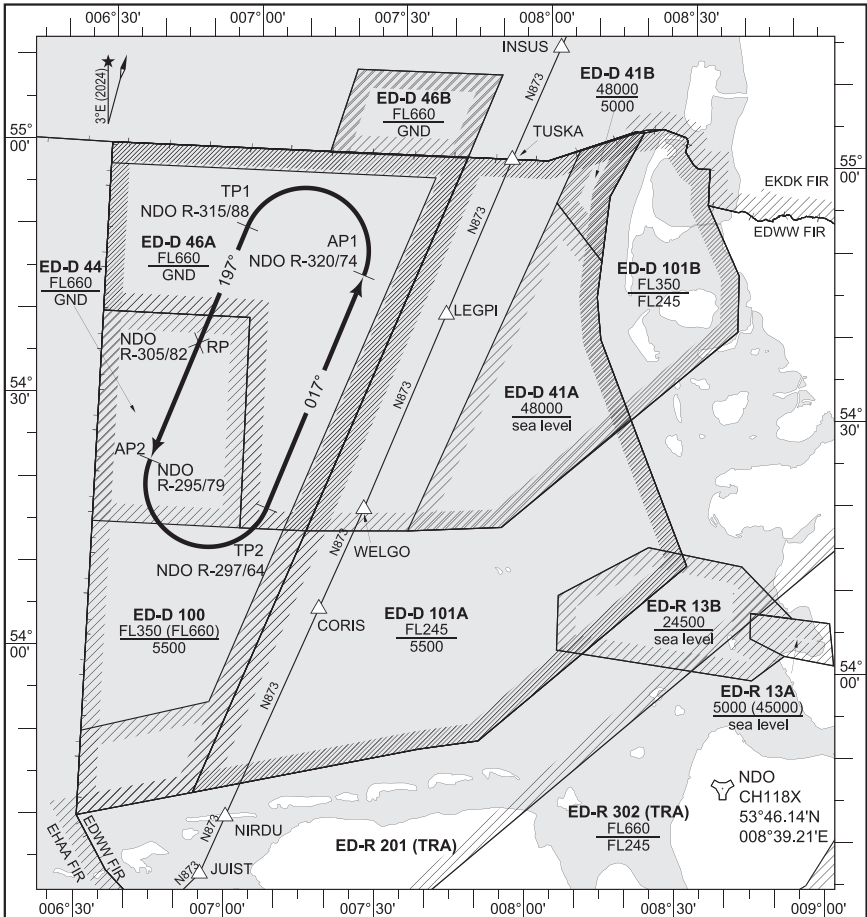
Leg length: 30 NM  
 Leg separation: 10 NM

Level block: FL090 - FL230

Refuelling base level: Will be defined prior to the tanker entering the anchor

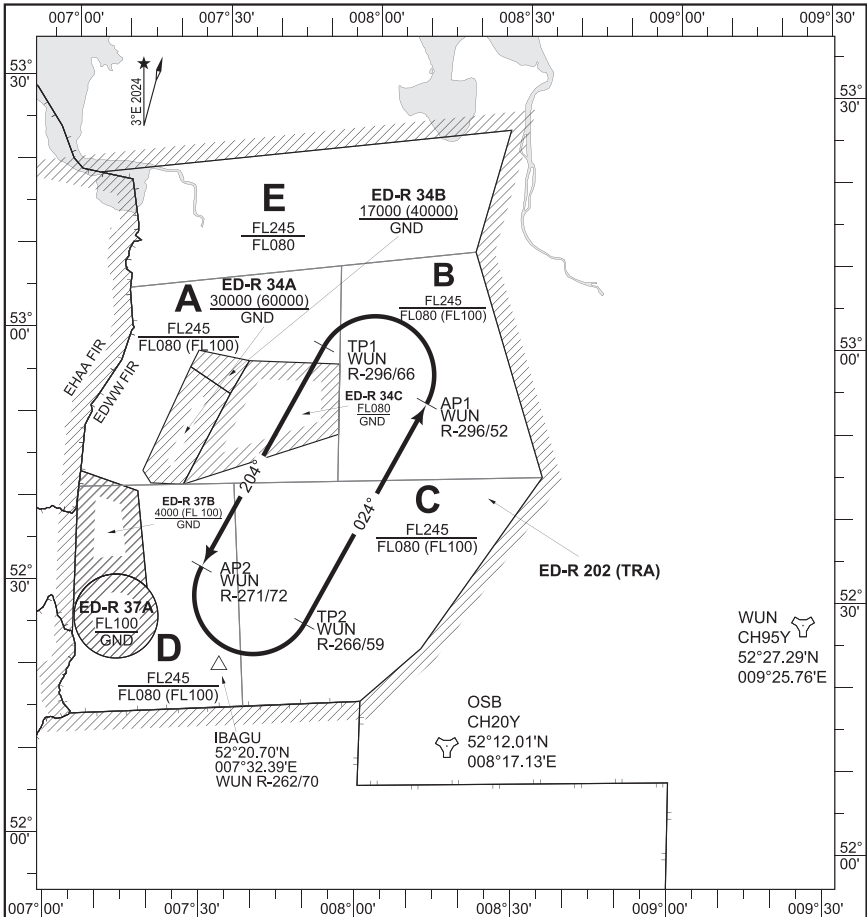
CHANGE: REVISED CHART (076/24)

ZenitLufOp: 18 APR 2024



Anchor Points: AP 1 = NDO R-320/74 DME  
54°45.60'N 007°22.97'E  
TP 1 = NDO R-315/88 DME  
54°50.75'N 006°58.63'E  
AP 2 = NDO R-295/79 DME  
54°22.58'N 006°41.13'E  
TP 2 = NDO R-297/64 DME  
54°17.49'N 007°05.22'E  
Rendezvous Point: RP = NDO R-305/82 DME  
54°36.67'N 006°49.83'E  
Air Refuelling  
Initial Point (ARIP): not defined  
Magnetic course: 017° / 197°

Leg length: 30 NM  
Leg separation: 15 NM  
Level block: FL200 - FL230  
Refuelling base level: FL220



Anchor Points: AP 1 = WUN R-296/52 DME  
 52°52.64'N 008°11.17'E  
 TP 1 = WUN R-296/66 DME  
 52°59.02'N 007°50.58'E  
 AP 2 = WUN R-271/72 DME  
 52°32.30'N 007°28.27'E  
 TP 2 = WUN R-266/59 DME  
 52°25.98'N 007°48.70'E

Rendezvous Point: not defined

Air Refuelling  
 Initial Point (ARIP): not defined

Magnetic course: 024° / 204°

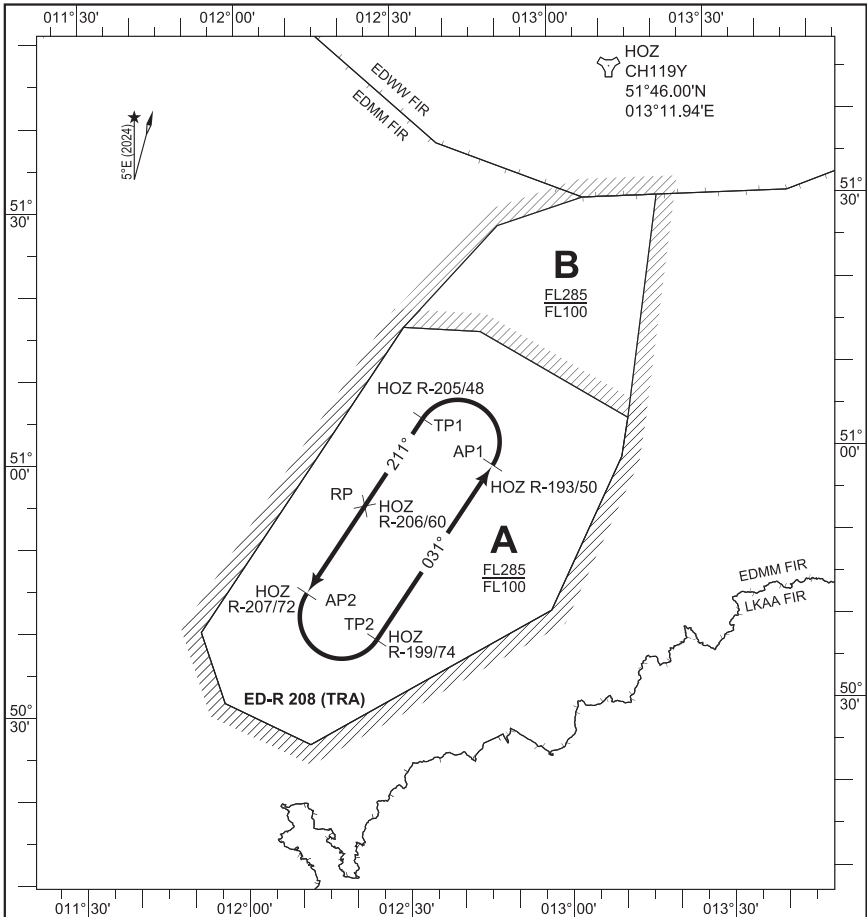
Leg length: 30 NM  
 Leg separation: 14 NM

Level block: FL090 - FL230

Refuelling base level: will be defined prior to the tanker entering the anchor

CHANGE: VAR (076/24)

ZentrLuftOp 18 APR 2024



Anchor Points:

AP 1 = HOZ R-193/50 DME  
 50°58.99'N 012°47.35'E

TP 1 = HOZ R-205/48 DME  
 51°04.75'N 012°34.41'E

AP 2 = HOZ R-207/72 DME  
 50°44.30'N 012°11.75'E

TP 2 = HOZ R-199/74 DME  
 50°38.58'N 012°24.64'E

Rendezvous Point: RP = HOZ R-206/60 DME  
 50°54.53'N 012°23.04'E

Air Refuelling  
 Initial Point (ARIP): not defined

Magnetic course: 031° / 211°

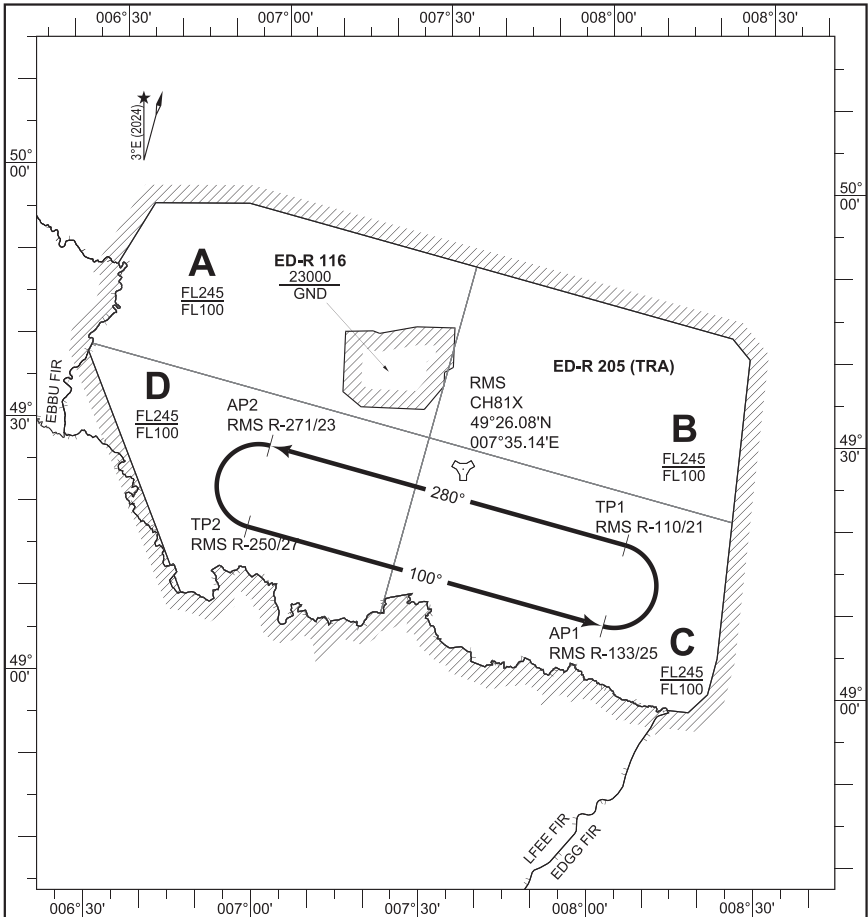
Leg length: 25 NM  
 Leg separation: 10 NM

Level block: FL140 - FL190

Minimum refuelling  
 base level: FL160

CHANGE: REVISED CHART (076/24)

ZenitLutOp: 18 APR 2024



Anchor Points:

AP 1 = RMS R-133/25 DME  
 49°08.02'N 008°01.61'E

TP 1 = RMS R-110/21 DME  
 49°17.72'N 008°05.23'E

AP 2 = RMS R-271/23 DME  
 49°27.88'N 006°59.72'E

TP 2 = RMS R-250/27 DME  
 49°18.14'N 006°56.30'E

Rendezvous Point: not defined

Air Refuelling  
 Initial Point (ARIP): not defined

Magnetic course: 100° / 280°

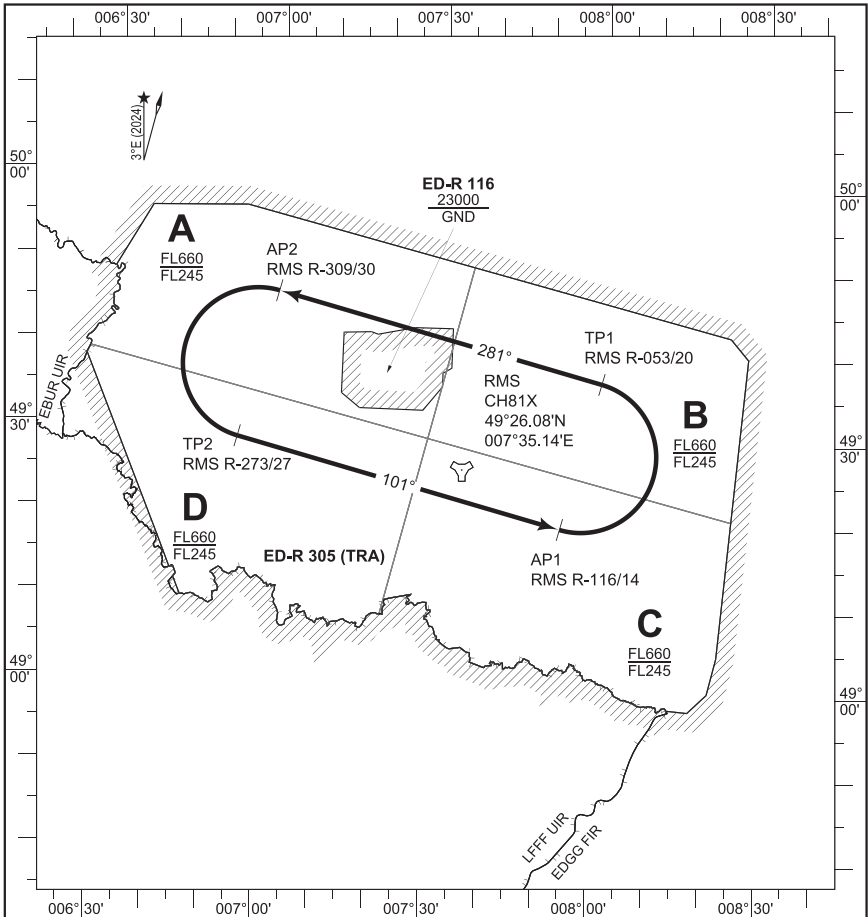
Leg length: 44 NM  
 Leg separation: 10 NM

Level block: FL130 - FL230

Minimum refuelling  
 base level: FL150

CHANGE: REVISED CHART (076/24)

ZenitLutOp: 18/APR 2024



Anchor Points:

AP 1 = RMS R-116/14 DME  
 49°19.39'N 007°53.33'E

TP 1 = RMS R-053/20 DME  
 49°36.81'N 008°00.19'E

AP 2 = RMS R-309/30 DME  
 49°46.51'N 007°00.42'E

TP 2 = RMS R-273/27 DME  
 49°29.03'N 006°53.90'E

Rendezvous Point: not defined

Air Refuelling  
 Initial Point (ARIP): not defined

Magnetic course: 101° / 281°

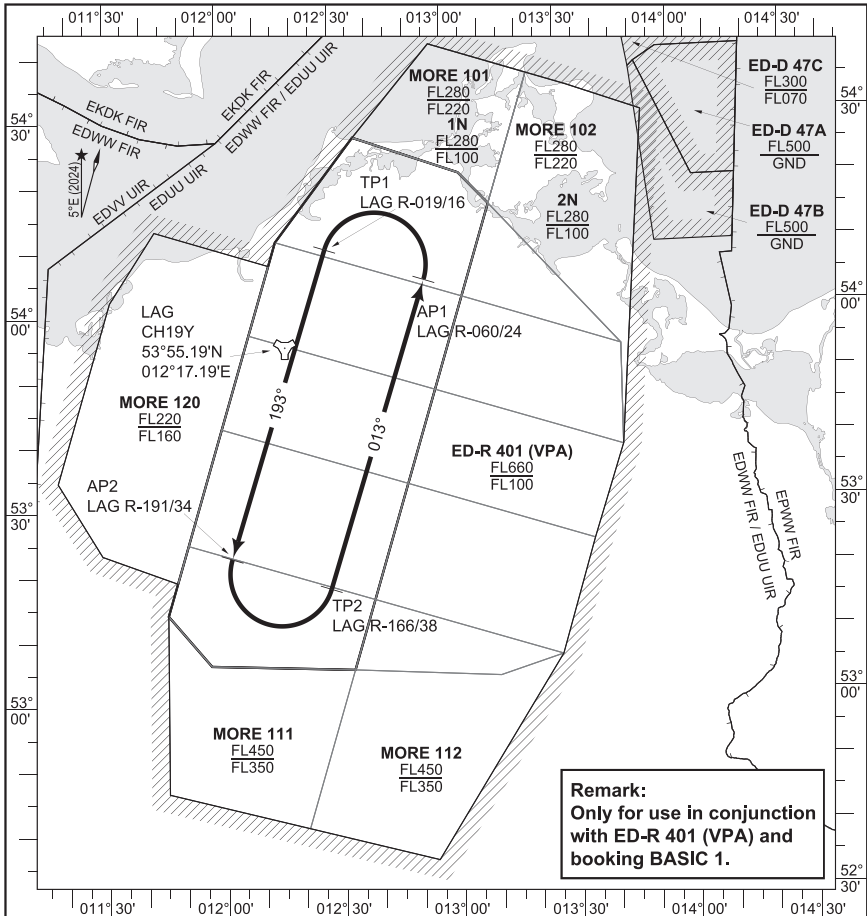
Leg length: 40 NM  
 Leg separation: 18 NM

Level block: FL260 - FL660

Refuelling base level: FL280

CHANGE: REVISED CHART (076/24)

ZenitLutOp: 18/APR 2024



**Remark:**  
**Only for use in conjunction**  
**with ED-R 401 (VPA) and**  
**booking BASIC 1.**

Anchor Points: AP 1 = LAG R-060/24 DME  
 54°05.22'N 012°54.04'E  
 TP 1 = LAG R-019/16 DME  
 54°10.21'N 012°28.20'E  
 AP 2 = LAG R-191/34 DME  
 53°22.68'N 012°02.40'E  
 TP 2 = LAG R-166/38 DME  
 53°17.79'N 012°27.81'E

Rendezvous Point: not defined

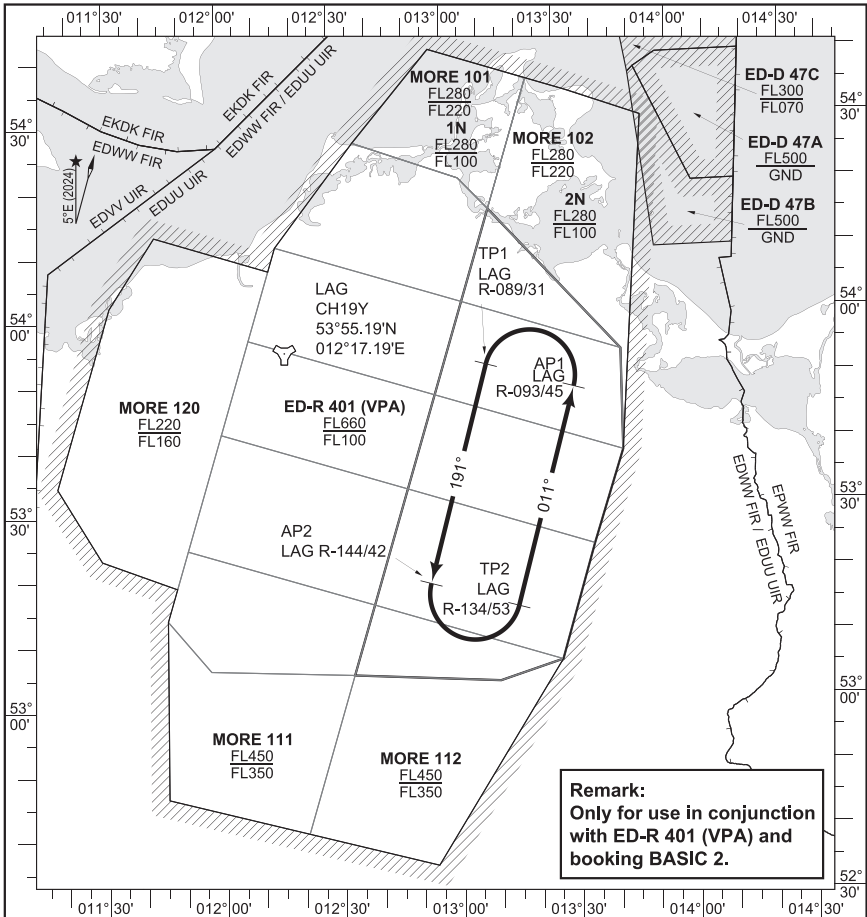
Air Refuelling  
 Initial Point (ARIP): not defined

Magnetic course: 013° / 193°

Leg length: 50 NM  
 Leg separation: 16 NM

Level block: FL100 - FL350

Reserved  
 MVPA Modules: BASIC 1A, 1B, 1C, 1D, 1E



**Remark:**  
**Only for use in conjunction**  
**with ED-R 401 (VPA) and**  
**booking BASIC 2.**

Anchor Points: AP 1 = LAG R-093/45 DME  
 53°48.84'N 013°32.49'E  
 TP 1 = LAG R-089/31 DME  
 53°52.72'N 013°09.78'E  
 AP 2 = LAG R-144/42 DME  
 53°19.10'N 012°53.74'E  
 TP 2 = LAG R-134/53 DME  
 53°15.28'N 013°16.17'E

Rendezvous Point: not defined

Air Refuelling  
 Initial Point (ARIP): not defined

Magnetic course: 011° / 191°

Leg length: 35 NM  
 Leg separation: 14 NM

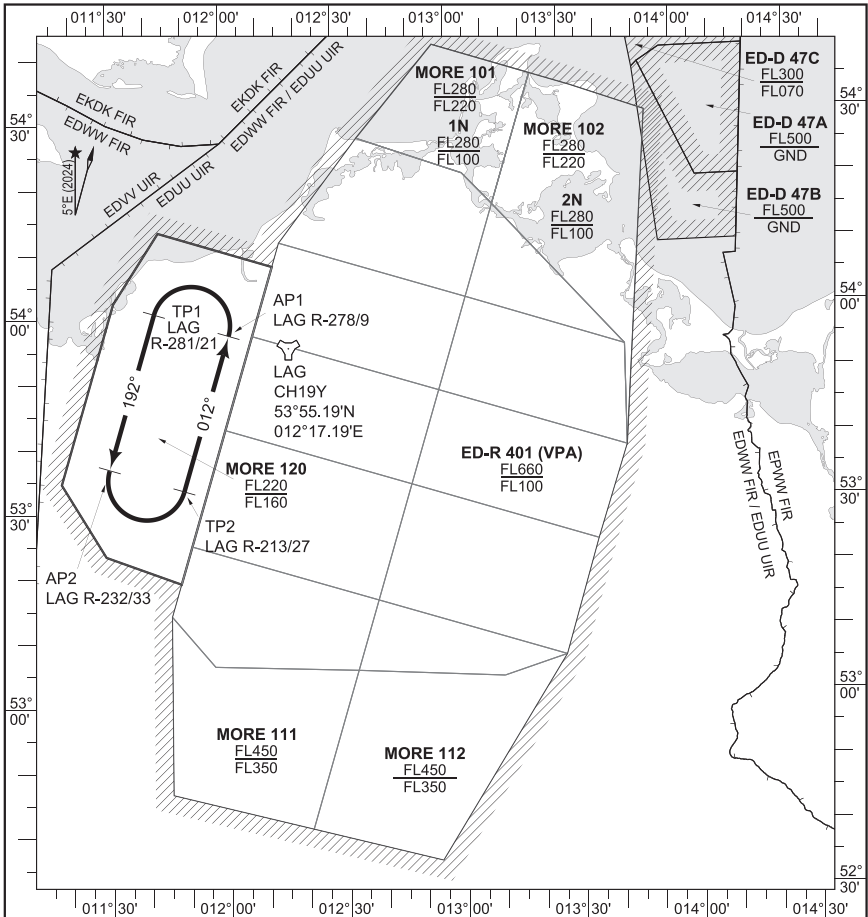
Level block: FL100 - FL350

Reserved  
 MVPA Modules: BASIC 2A, 2B, 2C, 2D, 2E

CHANGE: REVISED CHART (076/24)

ZenitLutOp: 18 APR 2024





Anchor Points: AP 1 = LAG R-278/9 DME  
 53°57.29'N 012°01.60'E  
 TP 1 = LAG R-281/21 DME  
 54°00.78'N 011°42.15'E  
 AP 2 = LAG R-232/33 DME  
 53°36.87'N 011°30.03'E  
 TP 2 = LAG R-213/27 DME  
 53°33.42'N 011°49.31'E

Rendezvous Point: not defined

Air Refuelling  
 Initial Point (ARIP): not defined

Magnetic course: 012° / 192°

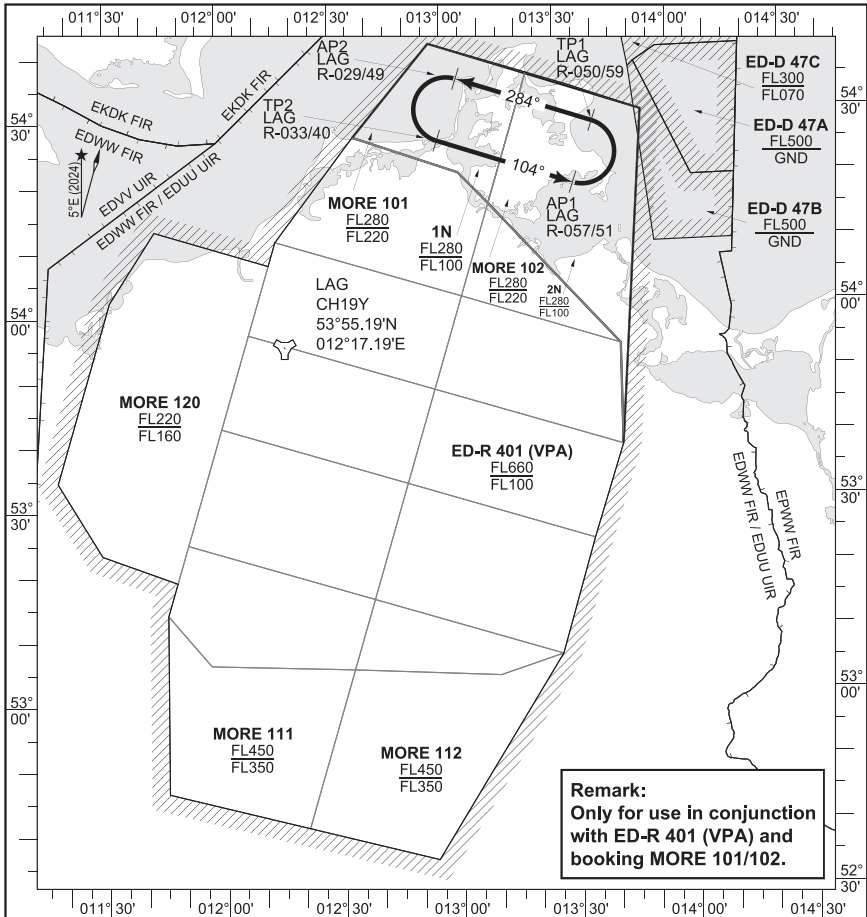
Leg length: 25 NM  
 Leg separation: 12 NM

Level block: FL160 - FL220

Reserved  
 MVPA Modules: MORE 120

CHANGE, REVISED CHART (076/24)

ZenitLutOp: 18 APR 2024



**Remark:**  
**Only for use in conjunction**  
**with ED-R 401 (VPA) and**  
**booking MORE 101/102.**

**Anchor Points:**  
 AP 1 = LAG R-057/51 DME  
 54°19.41'N 013°34.23'E  
 TP 1 = LAG R-050/59 DME  
 54°28.83'N 013°39.87'E  
 AP 2 = LAG R-029/49 DME  
 54°36.00'N 013°04.17'E  
 TP 2 = LAG R-033/40 DME  
 54°26.54'N 012°58.65'E

**Rendezvous Point:** not defined

**Air Refuelling**  
**Initial Point (ARIP):** 104° / 284°

**Magnetic course:**

**Leg length:** 22 NM  
**Leg separation:** 10 NM  
**Level block:** FL230 - FL270  
**Reserved MVPA Modules:** MORE 101, 102

CHANGE: VAR (076/24)

ZenitLutOp: 18 APR 2024