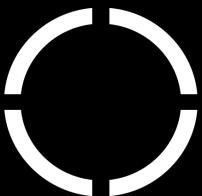


# In House App Testing

Lightning Protection and Earthing  
Schedule



project

**In House App Testing**

document description

**Lightning Protection and Earthing Schedule**

job number  
**XXXXX**

director

issue date

**28/03/2024**

status code  
**S2**

revision  
**P02**

status description

**Suitable for information**

project - originator - volume - level - type - role - number

**XXXXX - MXF - XX - XX - SH - E - 72000**

**Max Fordham LLP**

maxfordham.com  
Max Fordham LLP is a Limited Liability Partnership.

Registered in England and Wales  
Number OC300026.

Registered office:  
42-43 Gloucester Crescent  
London NW1 7PE  
This report is for the private and confidential use of the clients for whom the report is undertaken and should not be reproduced in whole or in part or relied upon by third parties for any use whatsoever without the express written authority of Max Fordham LLP

© Max Fordham LLP

**Issue History**

---

<b>Date</b>	<b>Rev</b>	<b>Status</b>	<b>Description</b>	<b>Issue Notes</b>
28 MAR 24	P02	S2	Suitable for information	First upload of digital schedule to MF Wiki

---

**Contributions**

---

<b>Initials</b>	<b>Role</b>
JG	Project Engineer

---

**Notes**

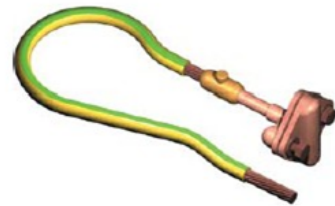
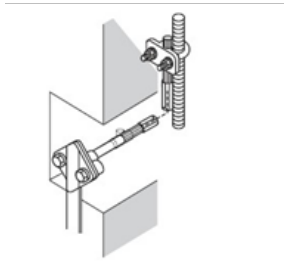
- 
- |   |   |
|---|---|
| 1 | Contractor to ensure that the catalogue number is consistent with the description prior to order. |
|---|---|
-

# Table of contents

Document Information . . . . .	2
Issue History . . . . .	2
Contributions . . . . .	2
Notes . . . . .	2
CIS-1 - Cast-in-Socket . . . . .	4
CIS-2 - Cast-in-Socket . . . . .	5
CIS-3 - Cast-in-Socket . . . . .	6
ETA-1 - Earth Conductor . . . . .	7
ETA-2 - Earth Conductor . . . . .	9
ETA-3 - Earth Conductor . . . . .	11
EBA-1 - Main LV Earth Bar . . . . .	13
CIP-1 - Traditional concrete inspection pit for earth electrode housing. . . . .	14
ERO-1 - Earth rod . . . . .	15
ECL-1 - Re-bar Clamp . . . . .	16
ECL-2 - Rainwater pipe clamp . . . . .	17
ECL-3 - Pipe clamp . . . . .	18
ECL-4 - Column clamp . . . . .	19

## CIS-1 - Cast-in-Socket

[TOC] Cast-in-socket - Pr\_65\_70\_46



### Identity Data

Uniclass Product Code	Pr_65_70_46
Abbreviation	CIS
Type Reference	1
Uniclass Product Description	Lightning protection and earthing components

### Application Data

Application	Cast-in-Socket
Notes	80mm long with pre-welded 500mm long 70mm <sup>2</sup> PVC insulated tail and re-bar clamp. To be used in conjunction with Re-bar clamp RBC-1.

### Manufacturer Data

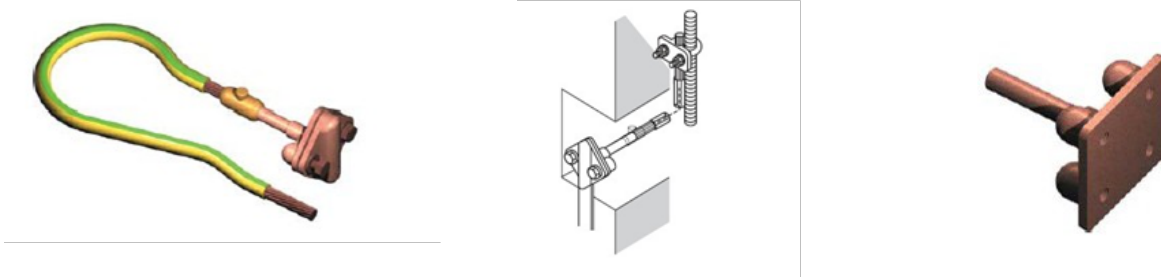
Manufacturer	FURSE
Product Model Number	PC103

### Construction Data

Type	Single Hole
Material	Copper
Connection Type	To connect column bases to concrete reinforcement bar and earth termination system.
Hole Size	M16 x 15mm

## CIS-2 - Cast-in-Socket

[TOC] Cast-in-socket - Pr\_65\_70\_46



### Identity Data

Uniclass Product Code	Pr_65_70_46
Abbreviation	CIS
Type Reference	2
Uniclass Product Description	Lightning protection and earthing components

### Application Data

Application	Cast-in-Socket
Notes	75mm long with pre-welded 500mm long 70mm <sup>2</sup> PVC insulated tail and re-bar clamp. To be used in conjunction with Re-bar clamp RBC-1.

### Manufacturer Data

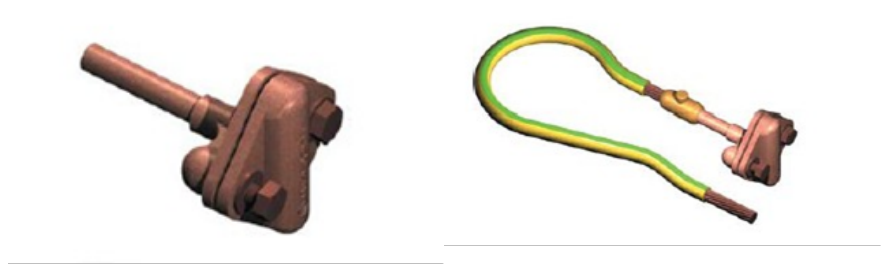
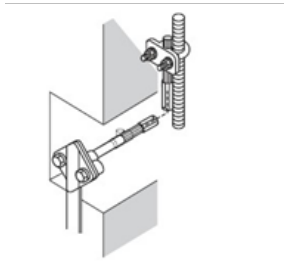
Manufacturer	FURSE
Product Model Number	PC111

### Construction Data

Type	Four hole
Material	Copper
Connection Type	To connect earth bars/terminals to concrete reinforcement bar and earth termination system.
Hole Size	M18 x 14mm

## CIS-3 - Cast-in-Socket

[TOC] Cast-in-socket - Pr\_65\_70\_46



### Identity Data

Uniclass Product Code	Pr_65_70_46
Abbreviation	CIS
Type Reference	3
Uniclass Product Description	Lightning protection and earthing components

### Application Data

Application	Cast-in-Socket
Notes	80mm long with pre-welded 500mm long 70mm <sup>2</sup> PVC insulated tail and re-bar clamp. To be used in conjunction with Re-bar clamp RBC-1.

### Manufacturer Data

Manufacturer	FURSE
Product Model Number	PC125

### Construction Data

Type	Two hole
Material	Copper
Connection Type	To connect distribution board earth bars/terminals to concrete reinforcement bar and earth termination system.
Hole Size	M8 x 12mm

## ETA-1 - Earth Conductor

[TOC] Earth Tapes - Pr\_65\_70\_46\_14



---

### Identity Data

Abbreviation	ETA
Type Reference	1
Uniclass Product Code	Pr_65_70_46_14
Uniclass Product Description	Copper earth tapes

---

### Application Data

Application	Earth Conductor
Notes	No sheath/covering.
Reference Standard	BS EN 13601

---

### Manufacturer Data

Manufacturer	Furse
Product Model Number	TC910

---

### Construction Data

Material	Copper
Type	Bare copper tape

---

### Dimensional Data

Overall Width	25 mm
Thickness	3 mm

---

**Performance Data**

---

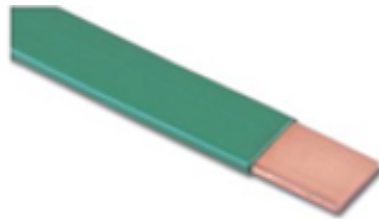
Withstand Current Rating      13.2 kA for 1 sec.

---



## ETA-2 - Earth Conductor

[TOC] Earth Tapes - Pr\_65\_70\_46\_14



---

### Identity Data

Abbreviation	ETA
Type Reference	2
Uniclass Product Code	Pr_65_70_46_14
Uniclass Product Description	Copper earth tapes

---

### Application Data

Application	Earth Conductor
Notes	LSOH covering.
Reference Standard	BS EN 13601

---

### Manufacturer Data

Manufacturer	Furse
Product Model Number	TC910

---

### Construction Data

Colour	Green
Material	Copper
Type	Insulated copper tape

---

### Dimensional Data

Overall Width	25 mm
Thickness	3 mm

---

**Performance Data**

---

Withstand Current Rating      13.2 kA for 1 sec.

---

## ETA-3 - Earth Conductor

[TOC] Earth Tapes - Pr\_65\_70\_46\_14



---

### Identity Data

Abbreviation	ETA
Type Reference	3
Uniclass Product Code	Pr_65_70_46_14
Uniclass Product Description	Copper earth tapes

---

### Application Data

Application	Earth Conductor
Notes	No sheath/covering.
Reference Standard	BS EN 13601

---

### Manufacturer Data

Manufacturer	Furse
Product Model Number	TC080

---

### Construction Data

Material	Copper
Type	Bare copper tape

---

### Dimensional Data

Overall Width	50 mm
Thickness	6 mm

---

**Performance Data**

---

Withstand Current Rating      44 kA for 1 sec.

---

## EBA-1 - Main LV Earth Bar

[[TOC](#)] [Earth Bar - Pr\\_65\\_70\\_46\\_24](#)



---

### Identity Data

Abbreviation	EBA
Type Reference	1
Uniclass Product Code	Pr_65_70_46_24
Uniclass Product Description	Earth bars

---

### Application Data

Application	Main LV Earth Bar
Notes	Contractor to choose length to suit application. Available in the range 475mm to 1900mm.
Reference Standard	BS 7430

---

### Manufacturer Data

Manufacturer	Furse
--------------	-------

---

### Construction Data

Material	Copper
----------	--------

---

### Dimensional Data

Overall Width	6 mm
Overall Height	50 mm
Mounting Plate Depth	96 mm
Mounting Plate Width	90 mm

## CIP-1 - Traditional concrete inspection pit for earth electrode housing.

[TOC] Concrete Inspection Pit - Pr\_65\_70\_46\_26



---

### Identity Data

Uniclass Product Code	Pr_65_70_46_26
Abbreviation	CIP
Uniclass System Code	Ss_75_50_45_45
Uniclass Product Description	Earth rod inspection pits
Uniclass System Description	Lightning protection systems
Type Reference	1

---

### Application Data

Application	Traditional concrete inspection pit for earth electrode housing.
Notes	<ul style="list-style-type: none"><li>• Integral lifting eye.</li><li>• Internal slots to enable an integral earth bar to be fitted.</li></ul>
Reference Standard	IEC/BS EN 62561-5

---

### Manufacturer Data

Manufacturer	Furse
--------------	-------

---

### Dimensional Data

Overall Length	317.5 mm
Overall Width	317.5 mm
Overall Height	190.5 mm
Gross Weight	30.1 kg

---

## ERO-1 - Earth rod

[[TOC](#)] [Earth Rod - Pr\\_65\\_70\\_46\\_27](#)



---

### Identity Data

Abbreviation	ERO
Type Reference	1
Uniclass Product Code	Pr_65_70_46_27
Uniclass Product Description	Earth rods

---

### Application Data

Application	Earth rod
Notes	For lightning protection earth terminations and feeder pillar earth terminations. Available in the following lengths: 15mm dia. x 1500mm long 20mm dia. x 1500mm long Refer to layout drawings for details of depths of earth rods.
Reference Standard	BS2874-C101

---

### Manufacturer Data

Manufacturer	Furse
--------------	-------

---

### Construction Data

Material	Copper
----------	--------

## ECL-1 - Re-bar Clamp

[[TOC](#)] Earthing Clamps - Pr\_65\_70\_46\_29



---

### Identity Data

Abbreviation	ECL
Type Reference	1
Uniclass Product Code	Pr_65_70_46_29
Uniclass Product Description	Earthing clamps

---

### Application Data

Application	Re-bar Clamp
Notes	To be used in conjunction with cast in sockets: CIS-1, CIS-2 & CIS-3.
Reference Standard	BS EN 62561-1 Class H

---

### Manufacturer Data

Manufacturer	FURSE
Product Range	Cable to rod clamp (Type GUV)
Product Model Number	CR700/CR705/CR730

---

### Construction Data

Material	Stainles Steel
Connection Type	To connect conductors to reinforcement bar together for earth continuity

---

### Dimensional Data

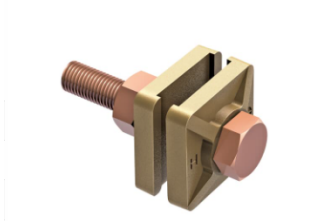
Gross Weight	0.3 kg
--------------	--------

---



## ECL-2 - Rainwater pipe clamp

[TOC] Earthing Clamps - Pr\_65\_70\_46\_29



---

### Identity Data

Abbreviation	ECL
Type Reference	2
Uniclass Product Code	Pr_65_70_46_29
Uniclass Product Description	Earthing clamps

---

### Application Data

Application	Rainwater pipe clamp
Notes	To be used in conjunction with 25mm wide tapes ETA-1 & TAPE-2.
Reference Standard	BS 7430

---

### Manufacturer Data

Manufacturer	FURSE
Product Model Number	BN115

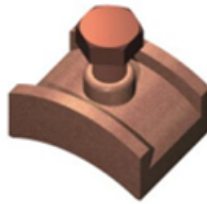
---

### Construction Data

Material	Copper
Connection Type	To make bonding connections to rainwater down pipes.

## ECL-3 - Pipe clamp

[[TOC](#)] Earthing Clamps - Pr\_65\_70\_46\_29



---

### Identity Data

Abbreviation	ECL
Type Reference	3
Uniclass Product Code	Pr_65_70_46_29
Uniclass Product Description	Earthing clamps

---

### Application Data

Application	Pipe clamp
Notes	To be used in conjunction with 25mm wide tapes ETA-1 & ETA-2.
Reference Standard	BS 7430

---

### Manufacturer Data

Manufacturer	FURSE
Product Model Number	BN120

---

### Construction Data

Material	Copper
Connection Type	To make bonding connections to services pipes.

## ECL-4 - Column clamp

[[TOC](#)] Earthing Clamps - Pr\_65\_70\_46\_29



---

### Identity Data

Abbreviation	ECL
Type Reference	4
Uniclass Product Code	Pr_65_70_46_29
Uniclass Product Description	Earthing clamps

---

### Application Data

Application	Column clamp
Notes	To be used in conjunction with 25mm wide tapes ETA-1 & ETA-2.

---

### Manufacturer Data

Manufacturer	FURSE
Product Model Number	BN105

---

### Construction Data

Material	Copper
Connection Type	To make bonding connections to steel columns.

---