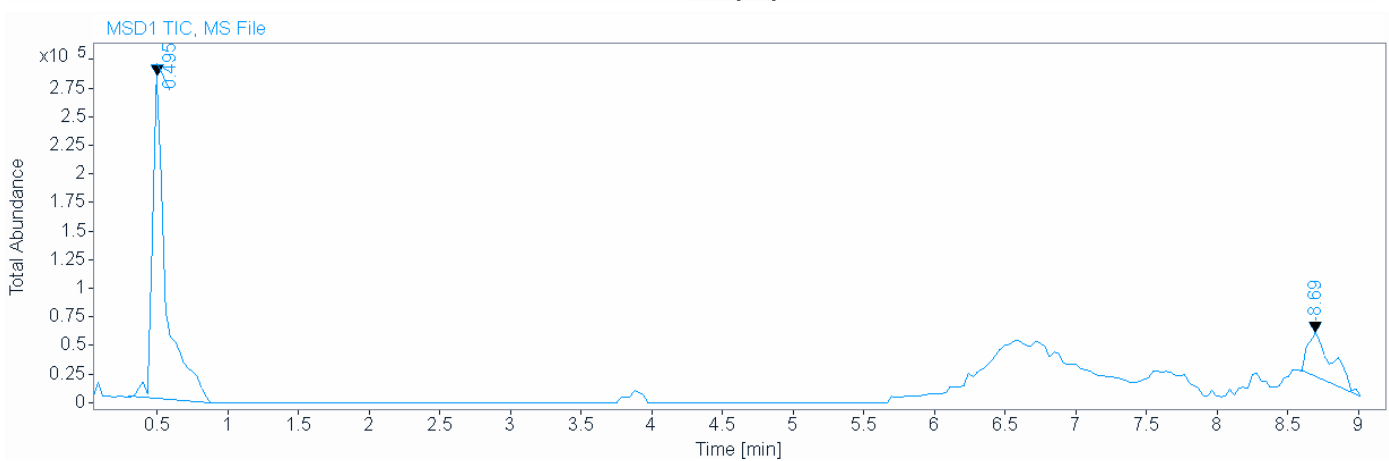
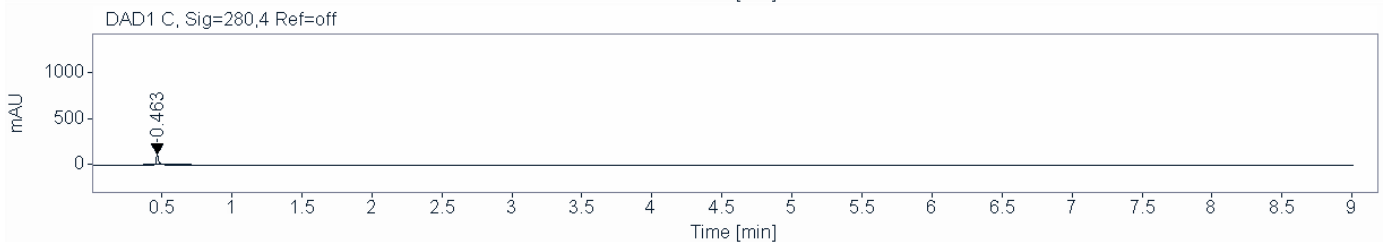
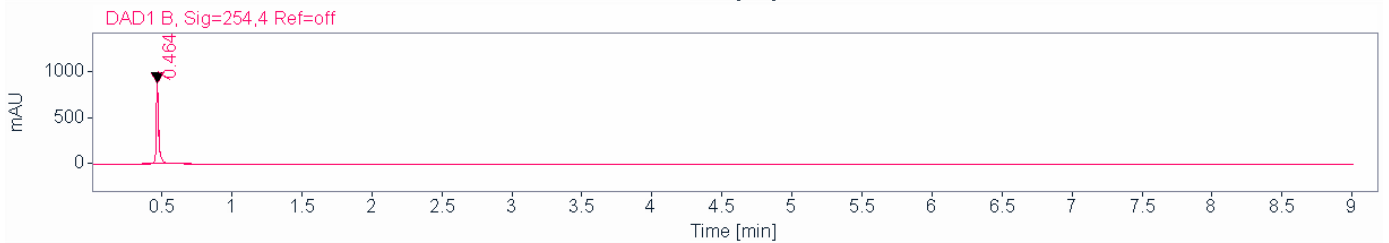
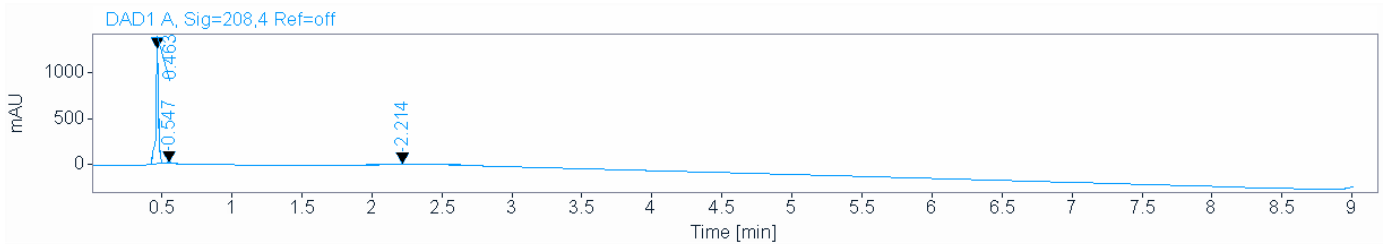


Single Injection Report

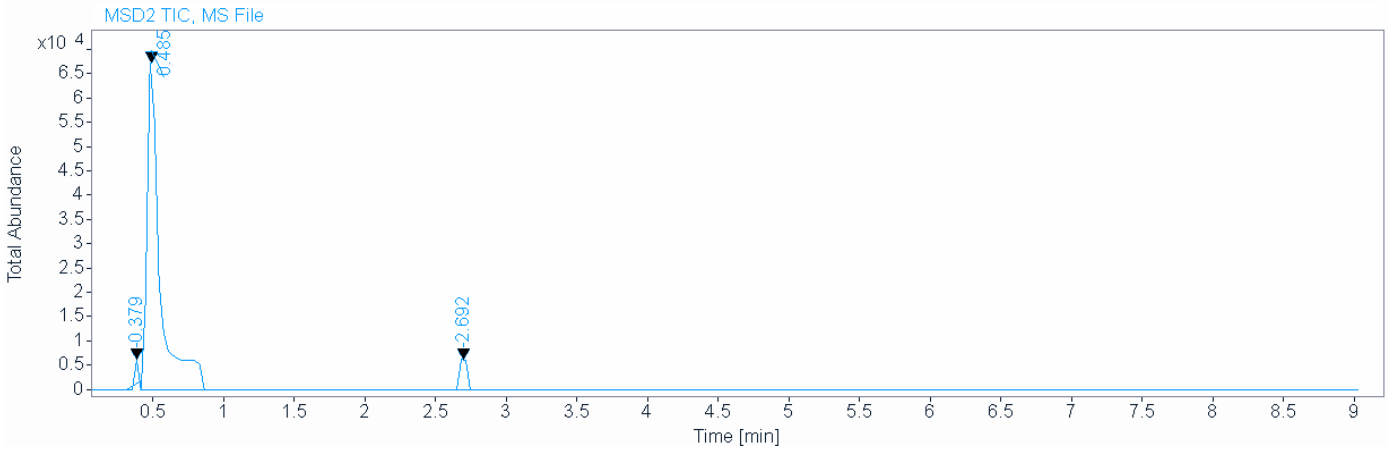


Agilent Technologies

Data file: C:\Users\Public\Documents\ChemStation\1\Data\TODD\TK\TK 2024-06-05 15-46-25\002-P1-B4-2F ATP.D
Sample name: 2F ATP
Description:
Sample amount: 0.000 **Sample type:** Sample
Instrument: G25LCMS **Location:** P1-B4
Injection date: 6/5/2024 3:57:14 PM **Injection:** 1 of 1
Acq. method: AVIDD_10min pos+neg_.M **Injection volume:** 2.000
Analysis method: AVIDD_10min pos+neg_.M **Acq. operator:** Rebecka Isaksson
Last changed: 2/22/2024 6:07:46 PM



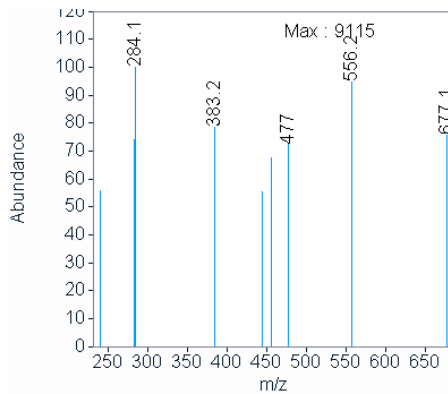
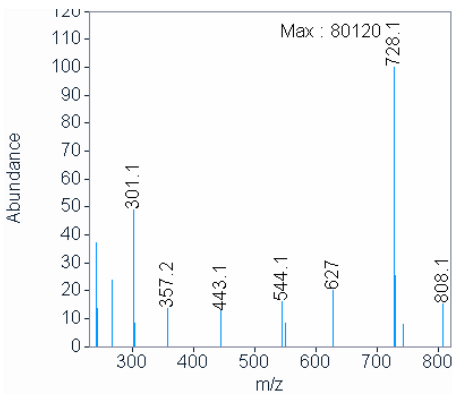
Single Injection Report



Signal MSD1 TIC, MS File

Peak RT 0.495

Peak RT 8.690

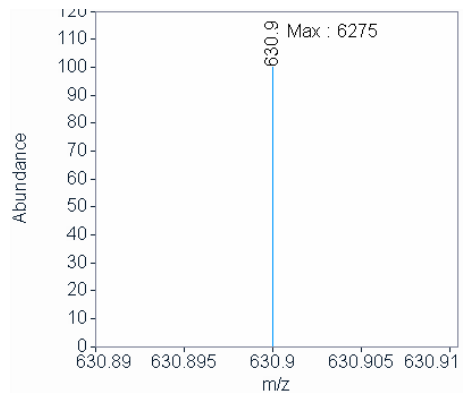
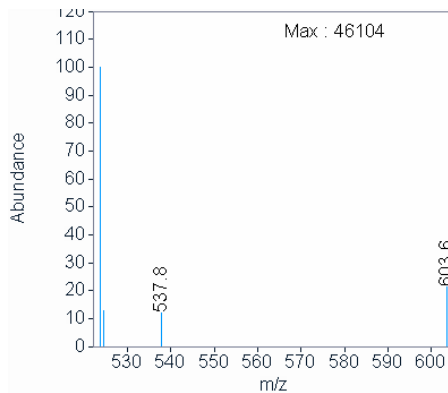
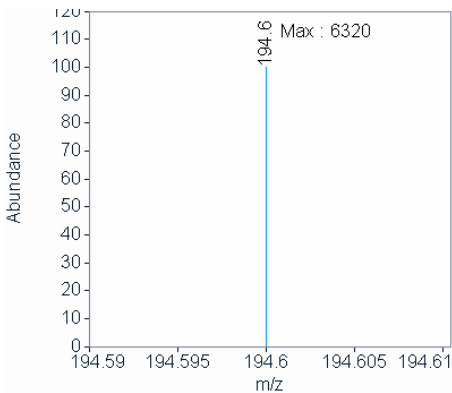


Signal MSD2 TIC, MS File

Peak RT 0.379

Peak RT 0.485

Peak RT 2.692



Single Injection Report



Agilent Technologies

Signal: DAD1 A, Sig=208,4 Ref=off

RT [min]	Type	Width [min]	Area	Height	Area%	Name
0.463	BB	0.0188	1652.3990	1258.5273	81.7826	
0.547	BB	0.0471	39.2814	13.8253	1.9442	
2.214	BB	0.2481	328.7975	15.7496	16.2733	
	Sum		2020.4779			

Signal: DAD1 B, Sig=254,4 Ref=off

RT [min]	Type	Width [min]	Area	Height	Area%	Name
0.464	BB	0.0186	1144.9132	883.2280	100.0000	
	Sum		1144.9132			

Signal: DAD1 C, Sig=280,4 Ref=off

RT [min]	Type	Width [min]	Area	Height	Area%	Name
0.463	BB	0.0206	169.3475	118.8563	100.0000	
	Sum		169.3475			

Signal: MSD1 TIC, MS File

RT [min]	Type	Width [min]	Area	Height	Area%	Name
0.495	BB	0.1357	1908188.2500	284577.8438	80.1668	
8.690	BBA	0.1820	472083.5625	38335.4102	19.8332	
	Sum		2380271.812			

Signal: MSD2 TIC, MS File

RT [min]	Type	Width [min]	Area	Height	Area%	Name
0.379	BB	0.0245	7613.3545	5184.9663	1.6367	
0.485	BB	0.1031	433642.6875	70079.1797	93.2239	
2.692	BBA	0.0566	23906.3613	7035.4468	5.1394	
	Sum		465162.4033			