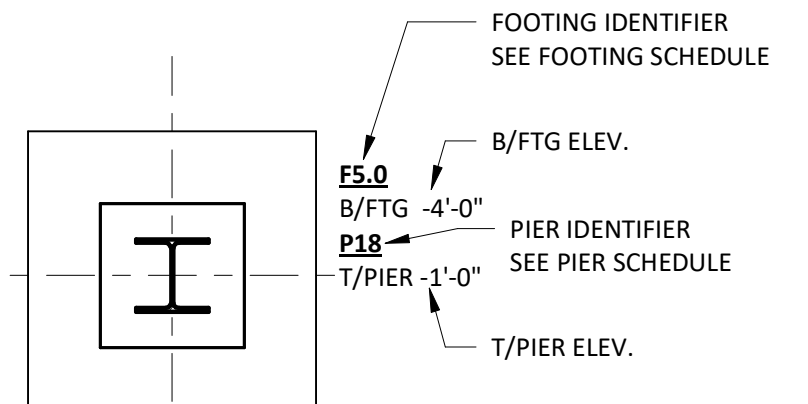
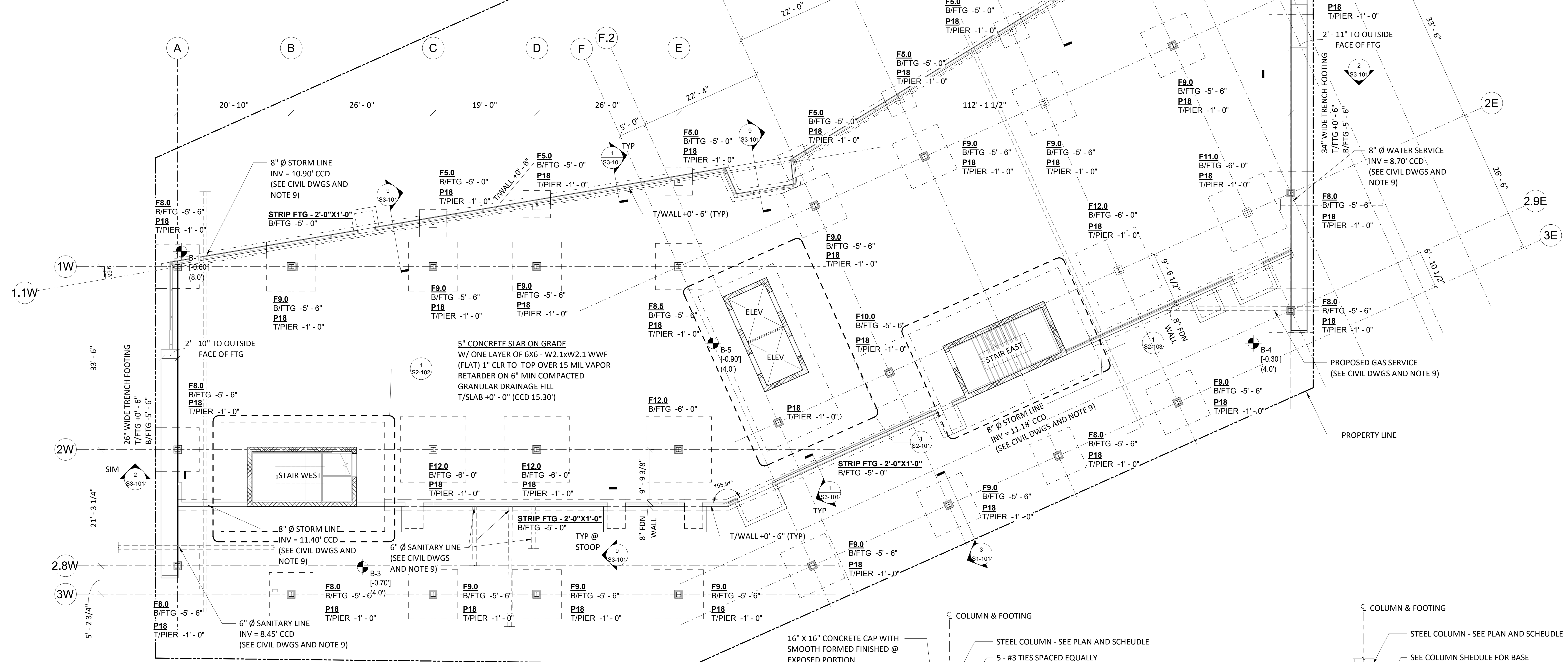
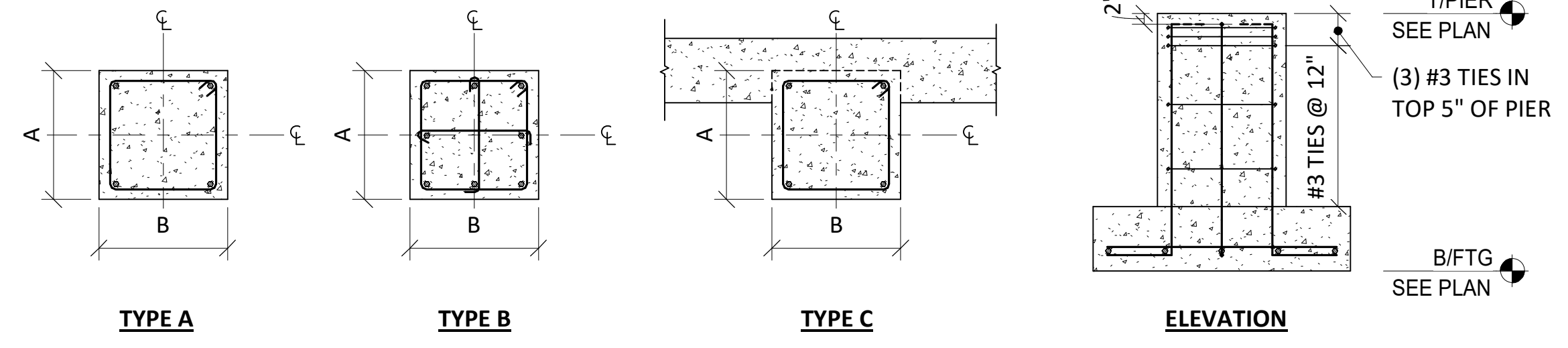


| FOOTING SCHEDULE<br>(ALLOWABLE BEARING PRESSURE = 2500 PSF, VERIFY IN FIELD) |        |        |       |                      |                   |         |
|--|--------|--------|-------|----------------------|-------------------|---------|
| MARK   | SIZE   |        |       | REINFORCING          |                   | REMARKS |
|  | W      | L      | H     | EACH WAY BOTTOM, UNO | EACH WAY TOP, UNO |         |
| F5.0   | 5'-0"  | 5'-0"  | 1'-0" | #5@12" OC            | #5@12" OC         |         |
| F8.0   | 8'-0"  | 8'-0"  | 1'-6" | #6@12" OC            | #5@12" OC         |         |
| F8.5   | 8'-6"  | 8'-6"  | 1'-6" | #6@12" OC            | #5@12" OC         |         |
| F9.0   | 9'-0"  | 9'-0"  | 1'-6" | #6@12" OC            | #5@12" OC         |         |
| F10.0  | 10'-0" | 10'-0" | 1'-6" | #6@12" OC            | #5@12" OC         |         |
| F11.0  | 11'-0" | 11'-0" | 2'-0" | #6@12" OC            | #5@12" OC         |         |
| F12.0  | 12'-0" | 12'-0" | 2'-0" | #6@12" OC            | #5@12" OC         |         |



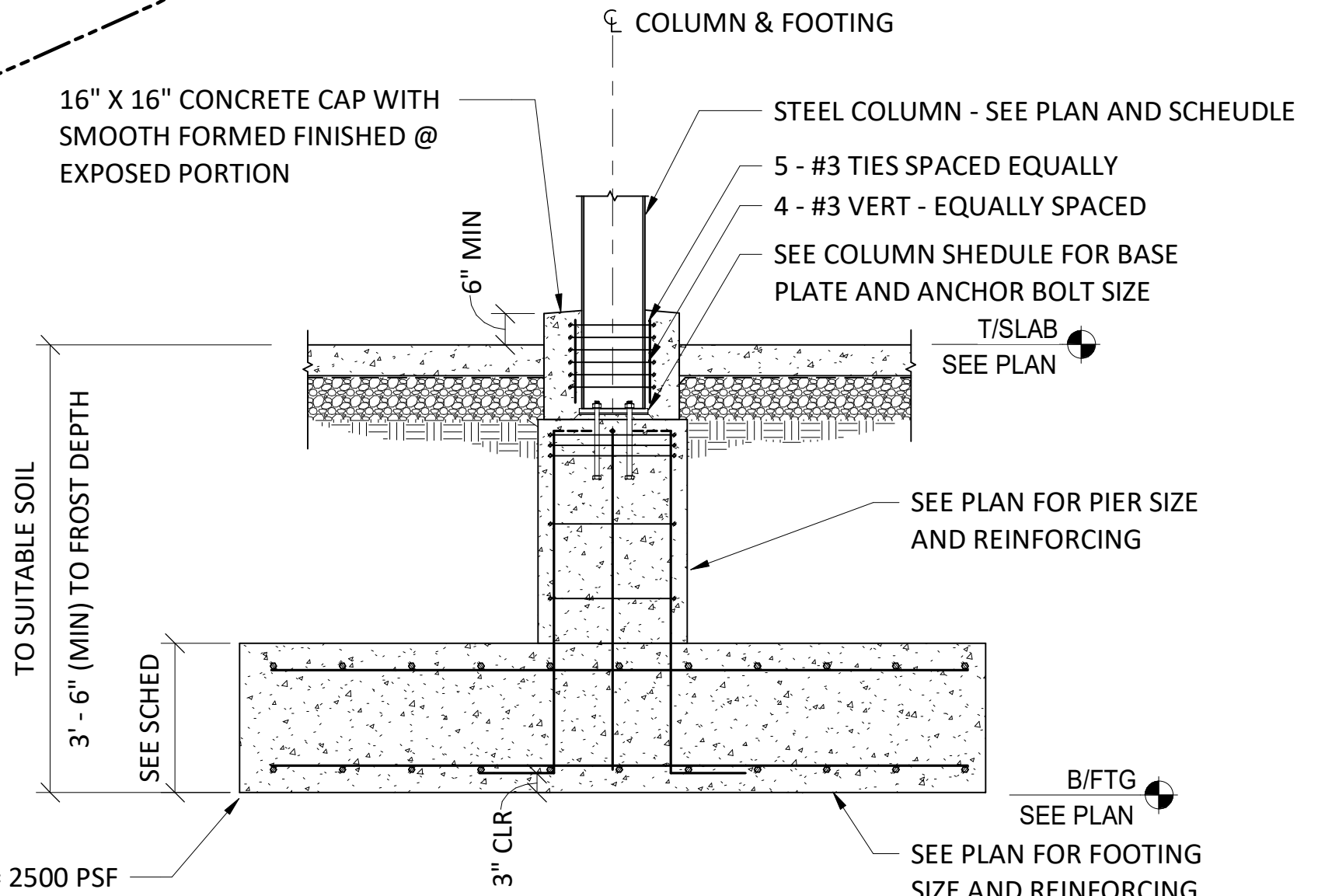
| PIER SCHEDULE |        |                 |     |                    |           |         |
|---------------|--------|-----------------|-----|--------------------|-----------|---------|
| MARK          | TYPE   | PIER DIMENSIONS |     | PIER REINFORCEMENT |           | REMARKS |
|               |        | A               | B   | VERT. BARS         | TIES      |         |
| P18           | TYPE A | 18"             | 18" | 4-#6               | #3@12" OC |         |



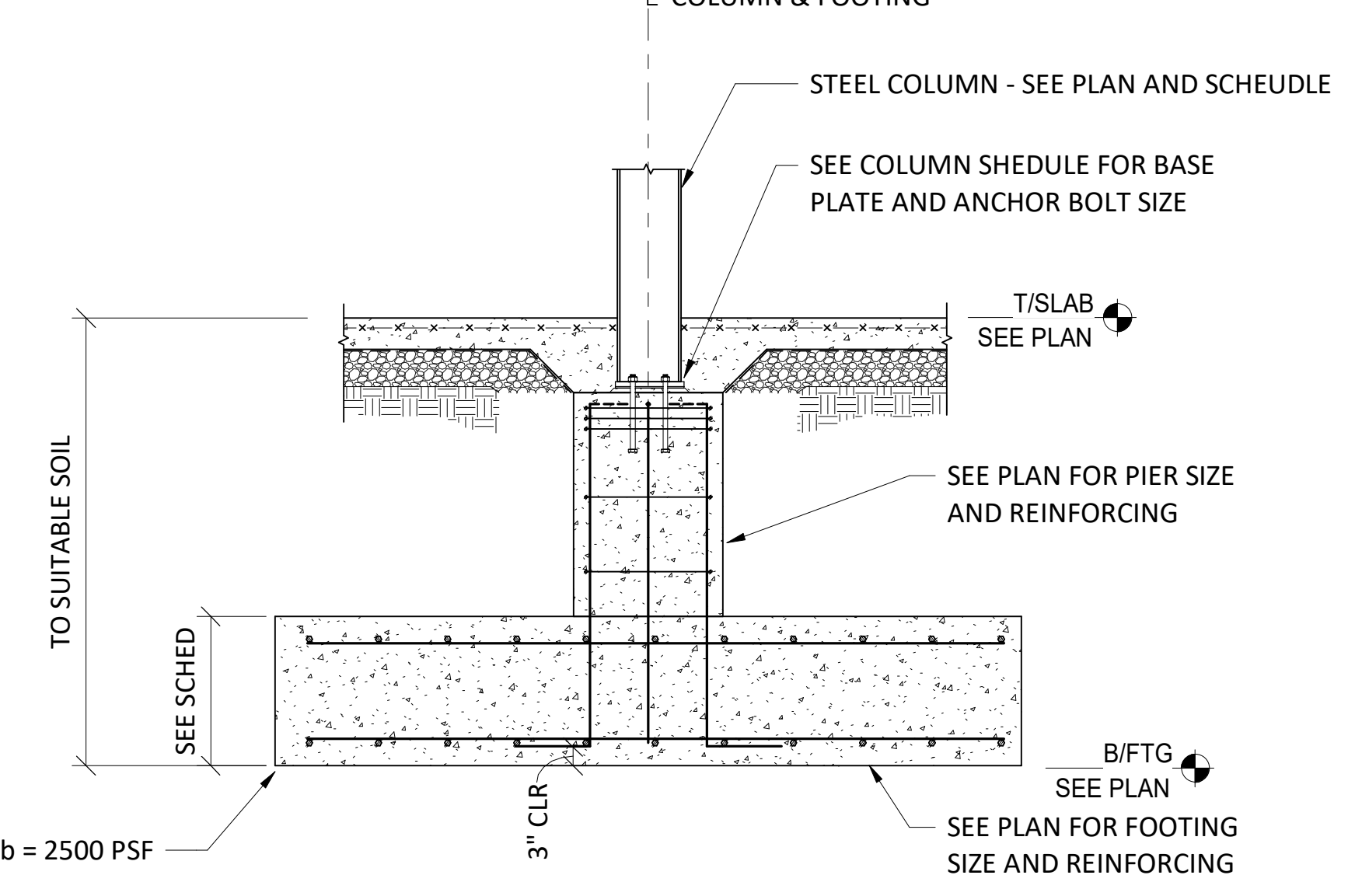
1 FOUNDATION PLAN  
1/8" = 1'-0"

**FOUNDATION NOTES:**

- 1. INDICATES APPROXIMATE LOCATION OF SOIL BORING.
- 2. [X.X] INDICATES APPROXIMATE LOCATION OF GRADE ABOVE OR BELOW FINISHED FLOOR +0'-0" (CCD +15.30')
- 3. (X.X) INDICATES EXCAVATION DEPTH BELOW EXISTING GRADE REQUIRED TO ACHIEVE A MINIMUM NET ALLOWABLE BEARING PRESSURE OF 2,500 PSF. THIS VALUE DOES NOT ACCOUNT FOR MINIMUM FROST DEPTH WHICH MAY REQUIRE FURTHER EXCAVATION ALONG EXTERIOR FOUNDATIONS.
- 4. SEE GEOTECHNICAL REPORT (PROJECT No. 2102888) BY GEI CONSULTANTS FOR MORE INFORMATION ON SITE PREPARATION, EARTHWORK, ENGINEERED FILL, GROUNDWATER CONTROL, AND GENERAL SITE RECOMMENDATIONS.
- 5. CONTRACTOR TO LAYOUT CONTROL JOINTS IN SLAB ON GRADE NO MORE THAN 12'-6" OC AND IN PANELS WITH LENGTH TO WIDTH RATIOS NOT EXCEEDING 2:1
- 6. HOLD DOWN FOUNDATION WALLS 8" AT INTERIOR AND EXTERIOR DOORS, TYP, UNO.
- 7. SEE ARCH, M/E/P DRAWINGS FOR MISCELLANEOUS CONCRETE WORK INCLUDING EQUIPMENT CURBS AND HOUSEKEEPING PADS.
- 8. SEE ARCH AND M/E/P DRAWINGS FOR LOCATIONS OF SLAB AND WALL PENETRATIONS, SEE TYPICAL STRUCTURAL DETAILS FOR ADDITIONAL REINFORCING REQUIREMENTS.
- 9. SEE 7, 8, AND 9 ON S3-101 FOR UTILITIES RUNNING THROUGH FOUNDATION WALLS OR BELOW FOOTINGS.



3 COLUMN FOOTING DETAIL AT PARKING LOT  
1/2" = 1'-0"



2 TYP COLUMN FOOTING DETAIL  
1/2" = 1'-0"

DOB APPROVAL STAMPS

PROJECT: **GRACE MANOR**

CLIENT: **EAST LAKE MANAGEMENT**  
3401 W Ogden Avenue  
Chicago, IL 60623

COLLABORATORS: **ML STRUCTURAL**  
334 E. Colfax St., Unit C/P Parkline, IL 60607

SITE DESIGN GROUP  
888 South Morgan Avenue Suite 100, Chicago, IL 60605

MEPIS  
36 South Wabash Avenue, Chicago, IL 60603

EVA  
40 West Huron Street, Chicago, IL 60654

WWW.JGMA.COM

2 90% PERMIT SET  
12.17.2021

1 DESIGN DEVELOPMENT  
10.15.2021

NO DESCRIPTION DATE

KEY PLAN

STAMP

SHEET TITLE

**FOUNDATION PLAN - LEVEL 1**

**S1-101**

SHEET NUMBER  
PROJECT NO 20154

PROJECT  
**GRACE MANOR**

COLLABORATORS  
**ML STRUCTURAL**  
334 E. Collis St., Unit 17, Palatine, IL 60067

**SITE DESIGN GROUP**  
888 South Michigan Avenue, Suite 1100, Chicago, IL 60605

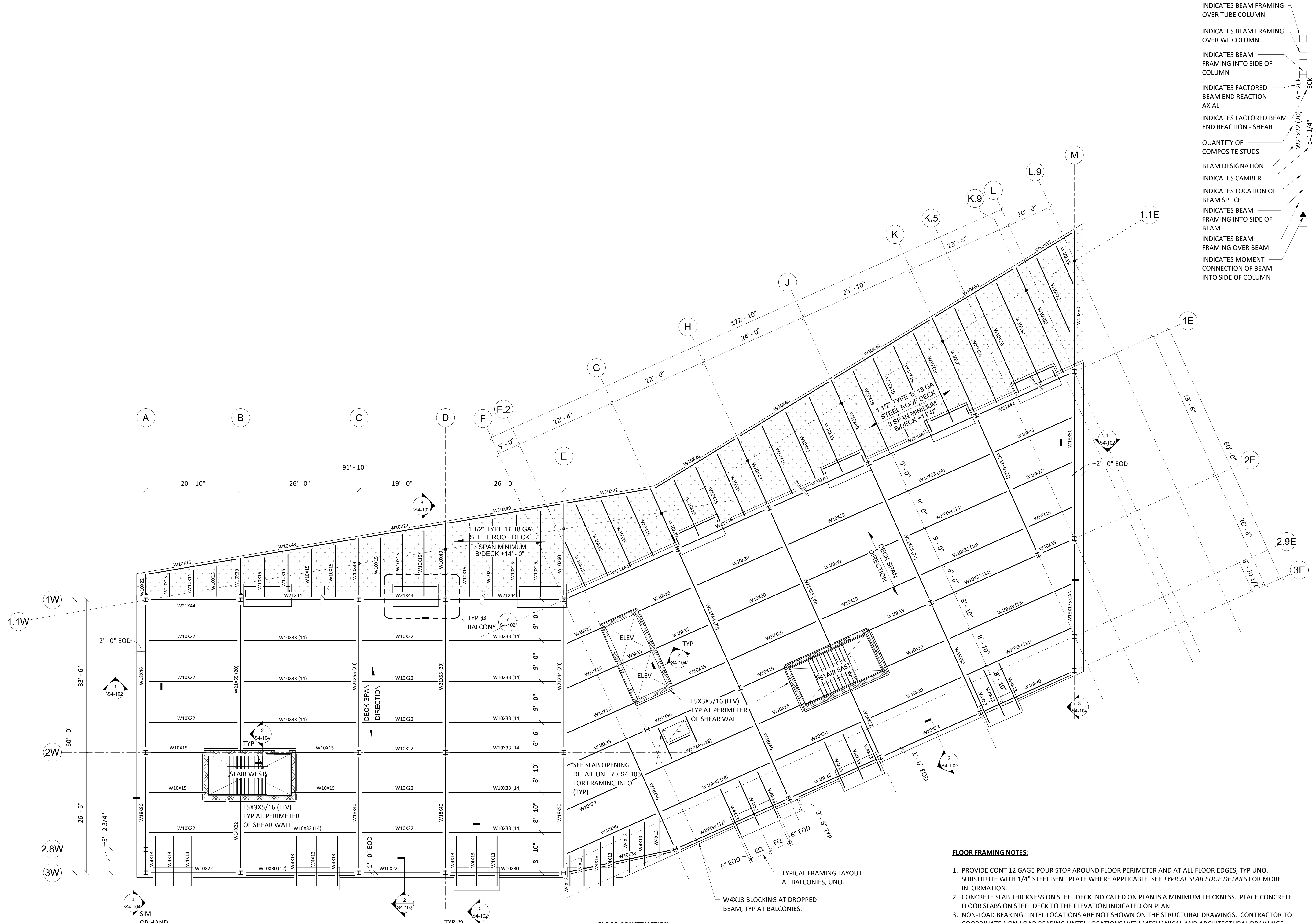
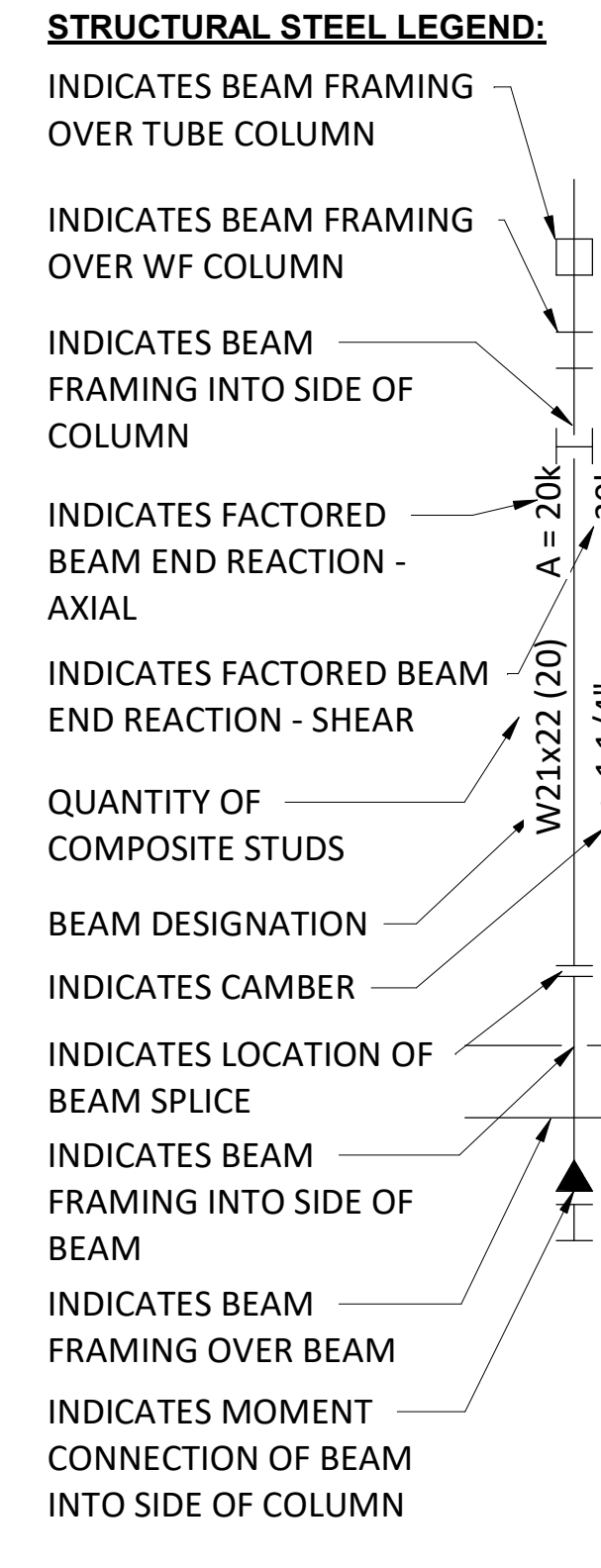
**MEPIS**  
36 South Wabash Avenue, Chicago, IL 60603

**EVA**  
143 West Huron Street, Chicago, IL 60654

CLIENT  
**EAST LAKE MANAGEMENT**  
3401 W Ogden Avenue  
Chicago, IL 60623



223 WEST OHIO STREET | CHICAGO, ILLINOIS 60654 | +1.312.695.4438 | WWW.JEMA.COM



**FLOOR CONSTRUCTION:**  
4" LW CONC SLAB  
ON 1 1/2" VLR 20 Ga. COMP STEEL DECK,  
3 SPAN MINIMUM, REINF  
W/ 6X6 - W2.1XW2.1 WWR  
(4" TOTAL THICKNESS) T/SLAB + 15' - 0"

**FLOOR FRAMING NOTES:**

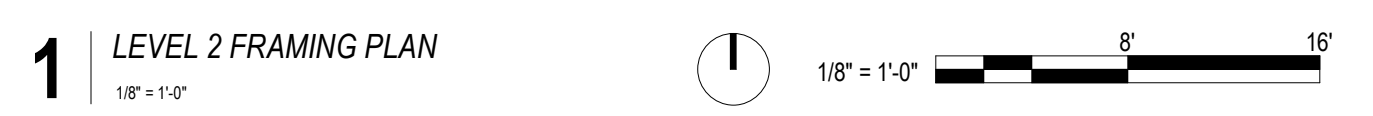
1. PROVIDE CONT 12 GAGE POUR STOP AROUND FLOOR PERIMETER AND AT ALL FLOOR EDGES, TYP UNO. SUBSTITUTE WITH 1/4" STEEL BENT PLATE WHERE APPLICABLE. SEE TYPICAL SLAB EDGE DETAILS FOR MORE INFORMATION.
2. CONCRETE SLAB THICKNESS ON STEEL DECK INDICATED ON PLAN IS A MINIMUM THICKNESS. PLACE CONCRETE FLOOR SLABS ON STEEL DECK TO THE ELEVATION INDICATED ON PLAN.
3. NON-LOAD BEARING LINTEL LOCATIONS ARE NOT SHOWN ON THE STRUCTURAL DRAWINGS. CONTRACTOR TO COORDINATE NON-LOAD BEARING LINTEL LOCATIONS WITH MECHANICAL AND ARCHITECTURAL DRAWINGS. SEE NON-LOAD BEARING LINTEL SCHEDULE FOR GENERAL WALL TYPES AND OPENING SIZES.
4. ALL STEEL PERMANENTLY EXPOSED TO WEATHER AND ALL LINTELS IN EXTERIOR WALLS SHALL BE HOT DIPPED GALVANIZED, UNO.
5. SEE ARCH AND M/E/P DRAWINGS FOR LOCATIONS FOR FLOOR PENETRATIONS.
6. ALL STEEL FLOOR FRAMING TO RECEIVE SPRAY FIREPROOFING AND SHALL BE LEFT UNPAINTED. REFER TO ARCHITECTURE FOR UL ASSEMBLIES.
7.  $\nabla$  INDICATES BEAM WEB PENETRATION. SEE DETAIL ON S4-104 FOR SPACING REQUIREMENTS.

| NO. | DESCRIPTION        | DATE       | KEY PLAN |
|-----|--------------------|------------|----------|
| 2   | 90% PERMIT SET     | 12.17.2021 |          |
| 1   | DESIGN DEVELOPMENT | 10.15.2021 |          |
|     |                    |            |          |

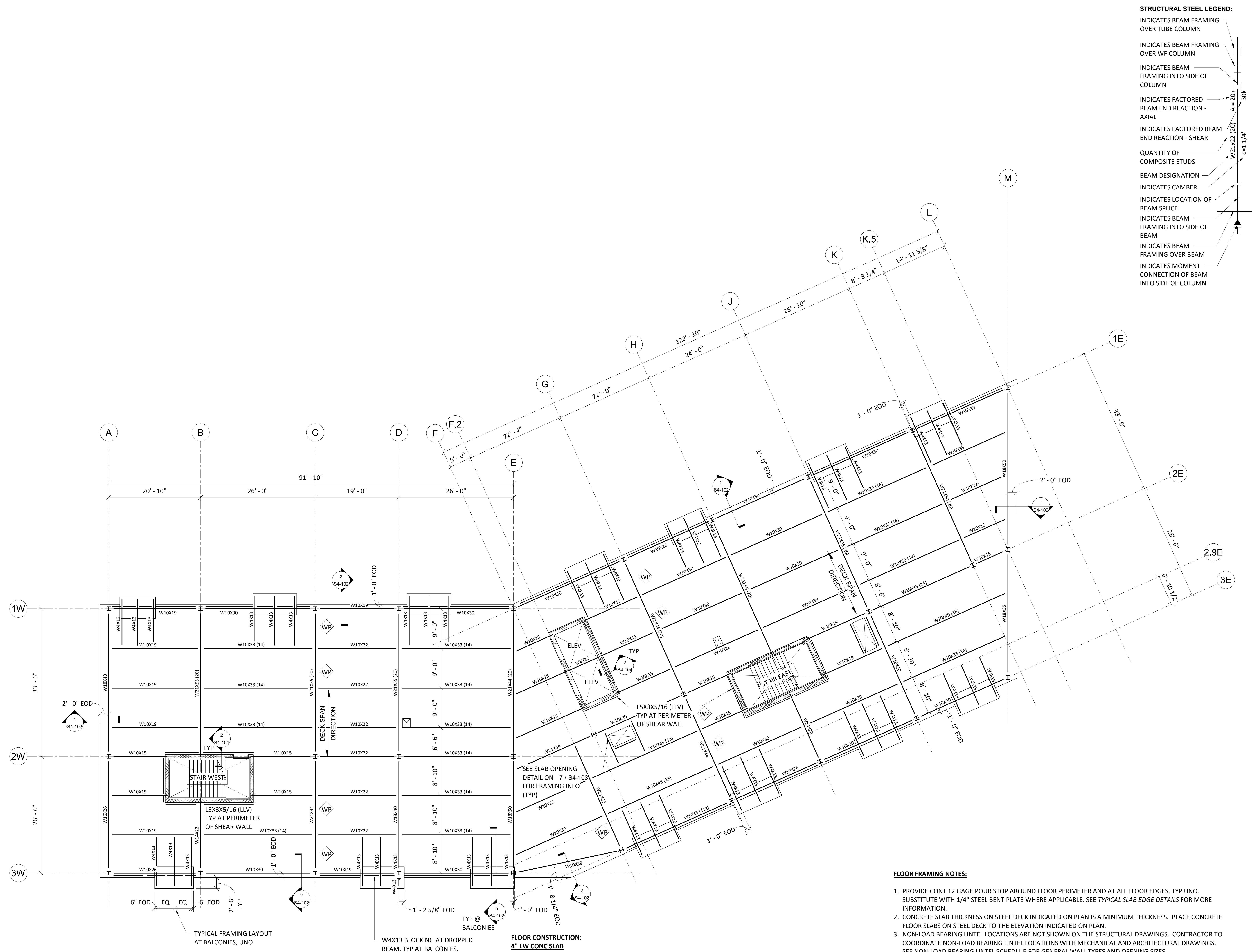
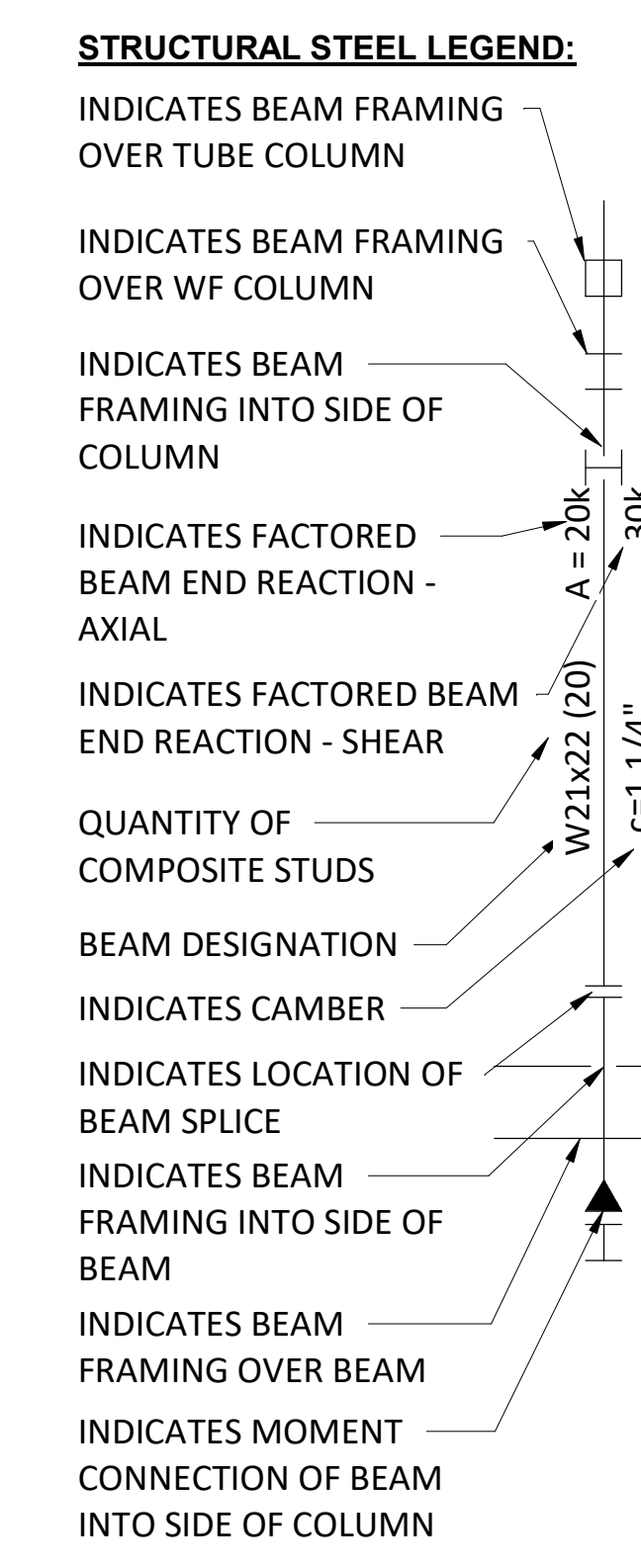
STAMP

**FRAMING PLAN - LEVEL 2**

**S1-102**  
SHEET NUMBER  
PROJECT NO 20154



1 LEVEL 2 FRAMING PLAN  
1/8" = 1'-0"



- FLOOR FRAMING NOTES:**
- PROVIDE CONT 12 GAGE POUR STOP AROUND FLOOR PERIMETER AND AT ALL FLOOR EDGES, TYP UNO. SUBSTITUTE WITH 1/4" STEEL BENT PLATE WHERE APPLICABLE. SEE TYPICAL SLAB EDGE DETAILS FOR MORE INFORMATION.
  - CONCRETE SLAB THICKNESS ON STEEL DECK INDICATED ON PLAN IS A MINIMUM THICKNESS. PLACE CONCRETE FLOOR SLABS ON STEEL DECK TO THE ELEVATION INDICATED ON PLAN.
  - NON-LOAD BEARING LINTEL LOCATIONS ARE NOT SHOWN ON THE STRUCTURAL DRAWINGS. CONTRACTOR TO COORDINATE NON-LOAD BEARING LINTEL LOCATIONS WITH MECHANICAL AND ARCHITECTURAL DRAWINGS. SEE NON-LOAD BEARING LINTEL SCHEDULE FOR GENERAL LAYOUT TYPES AND OPENING SIZES.
  - ALL STEEL PERMANENTLY EXPOSED TO WEATHER AND ALL LINTELS IN EXTERIOR WALLS SHALL BE HOT DIPPED GALVANIZED, UNO.
  - SEE ARCH AND M/E/P DRAWINGS FOR LOCATIONS FOR FLOOR PENETRATIONS.
  - ALL STEEL FLOOR FRAMING TO RECEIVE SPRAY FIREPROOFING AND SHALL BE LEFT UNPAINTED. REFER TO ARCHITECTURE FOR UL ASSEMBLIES.
  - WP INDICATES BEAM WEB PENETRATION. SEE DETAIL ON S4-104 FOR SPACING REQUIREMENTS.

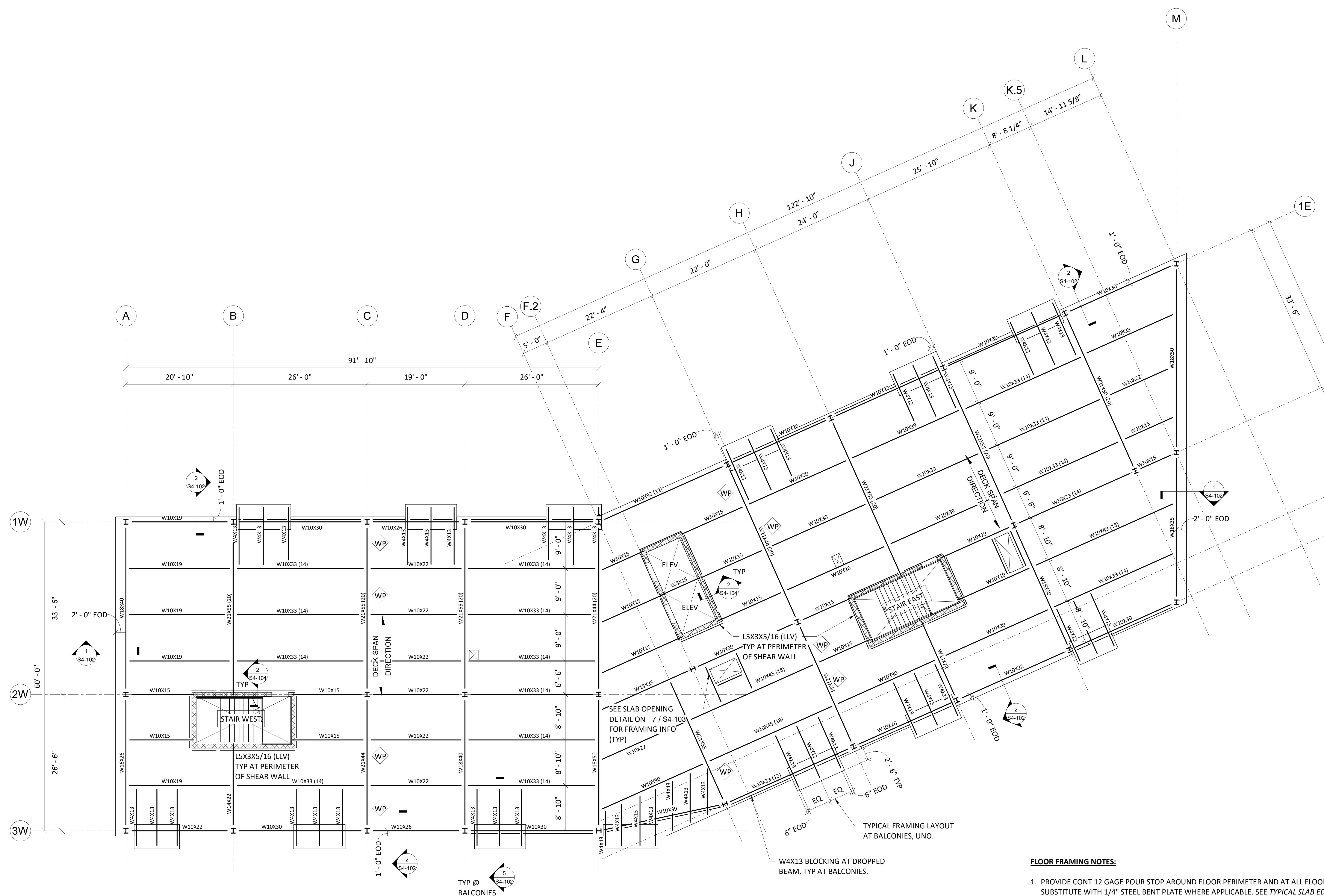
**FLOOR CONSTRUCTION:**  
**4" LW CONC SLAB**  
 ON 1 1/2" VLR 20 Ga. COMP STEEL DECK,  
 3 SPAN MINIMUM, REINF  
 W/ 6X6 - W2.1XW2.1 WWR  
 (4" TOTAL THICKNESS) T/SLAB + 26' - 0"

W4X13 BLOCKING AT DROPPED BEAM, TYP AT BALCONIES.

TYPICAL FRAMING LAYOUT AT BALCONIES, UNO.

**STRUCTURAL STEEL LEGEND:**

- INDICATES BEAM FRAMING OVER TUBE COLUMN
- INDICATES BEAM FRAMING OVER WF COLUMN
- INDICATES BEAM FRAMING INTO SIDE OF COLUMN
- INDICATES FACTORED BEAM END REACTION - AXIAL
- INDICATES FACTORED BEAM END REACTION - SHEAR
- QUANTITY OF COMPOSITE STUDS
- BEAM DESIGNATION
- INDICATES CAMBER
- INDICATES LOCATION OF BEAM SPLICE
- INDICATES BEAM FRAMING INTO SIDE OF BEAM
- INDICATES BEAM FRAMING OVER BEAM
- INDICATES MOMENT CONNECTION OF BEAM INTO SIDE OF COLUMN



**FLOOR CONSTRUCTION:**  
**4" LW CONC SLAB**  
 ON 1 1/2" VLR 20 Ga. COMP STEEL DECK,  
 3 SPAN MINIMUM, REINF  
 W/ 6X6 - W2.1XW2.1 WWR  
 (4" TOTAL THICKNESS) T/SLAB + 37' - 0"

**FLOOR FRAMING NOTES:**

1. PROVIDE CONT 12 GAGE POUR STOP AROUND FLOOR PERIMETER AND AT ALL FLOOR EDGES, TYP UNO.
2. SUBSTITUTE WITH 1/4" STEEL BENT PLATE WHERE APPLICABLE. SEE TYPICAL SLAB EDGE DETAILS FOR MORE INFORMATION.
3. CONCRETE SLAB THICKNESS ON STEEL DECK INDICATED ON PLAN IS A MINIMUM THICKNESS. PLACE CONCRETE FLOOR SLABS ON STEEL DECK TO THE ELEVATION INDICATED ON PLAN.
4. NON-LOAD BEARING LINTEL LOCATIONS ARE NOT SHOWN ON THE STRUCTURAL DRAWINGS. CONTRACTOR TO COORDINATE NON-LOAD BEARING LINTEL LOCATIONS WITH MECHANICAL AND ARCHITECTURAL DRAWINGS. SEE NON-LOAD BEARING LINTEL SCHEDULE FOR GENERAL WALL TYPES AND OPENING SIZES.
5. ALL STEEL PERMANENTLY EXPOSED TO WEATHER AND ALL LINTELS IN EXTERIOR WALLS SHALL BE HOT DIPPED GALVANIZED, UNO.
6. SEE ARCH AND M/E/P DRAWINGS FOR LOCATIONS FOR FLOOR PENETRATIONS.
7. ALL STEEL FLOOR FRAMING TO RECEIVE SPRAY FIREPROOFING AND SHALL BE LEFT UNPAINTED. REFER TO ARCHITECTURE FOR UL ASSEMBLIES.
8. WP INDICATES BEAM WEB PENETRATION. SEE DETAIL ON S4-104 FOR SPACING REQUIREMENTS.

**STRUCTURAL STEEL LEGEND:**

- INDICATES BEAM FRAMING OVER TUBE COLUMN
- INDICATES BEAM FRAMING OVER WF COLUMN
- INDICATES BEAM FRAMING INTO SIDE OF COLUMN
- INDICATES FACTORED BEAM END REACTION - AXIAL
- INDICATES FACTORED BEAM END REACTION - SHEAR
- QUANTITY OF COMPOSITE STUDS
- BEAM DESIGNATION
- INDICATES CAMBER
- INDICATES LOCATION OF BEAM SPLICE
- INDICATES BEAM FRAMING INTO SIDE OF BEAM
- INDICATES BEAM FRAMING OVER BEAM
- INDICATES BEAM MOMENT CONNECTION INTO SIDE OF COLUMN

PROJECT  
**GRACE MANOR**

CLIENT  
**EAST LAKE MANAGEMENT**  
3401 W Ogden Avenue  
Chicago, IL 60623

COLLABORATORS  
**ML STRUCTURAL**  
334 E. Colfax St., Unit 10 Palatine, IL 60067

SITE DESIGN GROUP  
888 South Morgan Avenue Suite 100 Chicago, IL 60605

MEPIS  
36 South Wabash Avenue, Chicago, IL 60603

EVA  
43 West Huron Street, Chicago, IL 60654

2 90% PERMIT SET 12.17.2021  
1 DESIGN DEVELOPMENT 10.15.2021  
NO. DESCRIPTION DATE

KEY PLAN

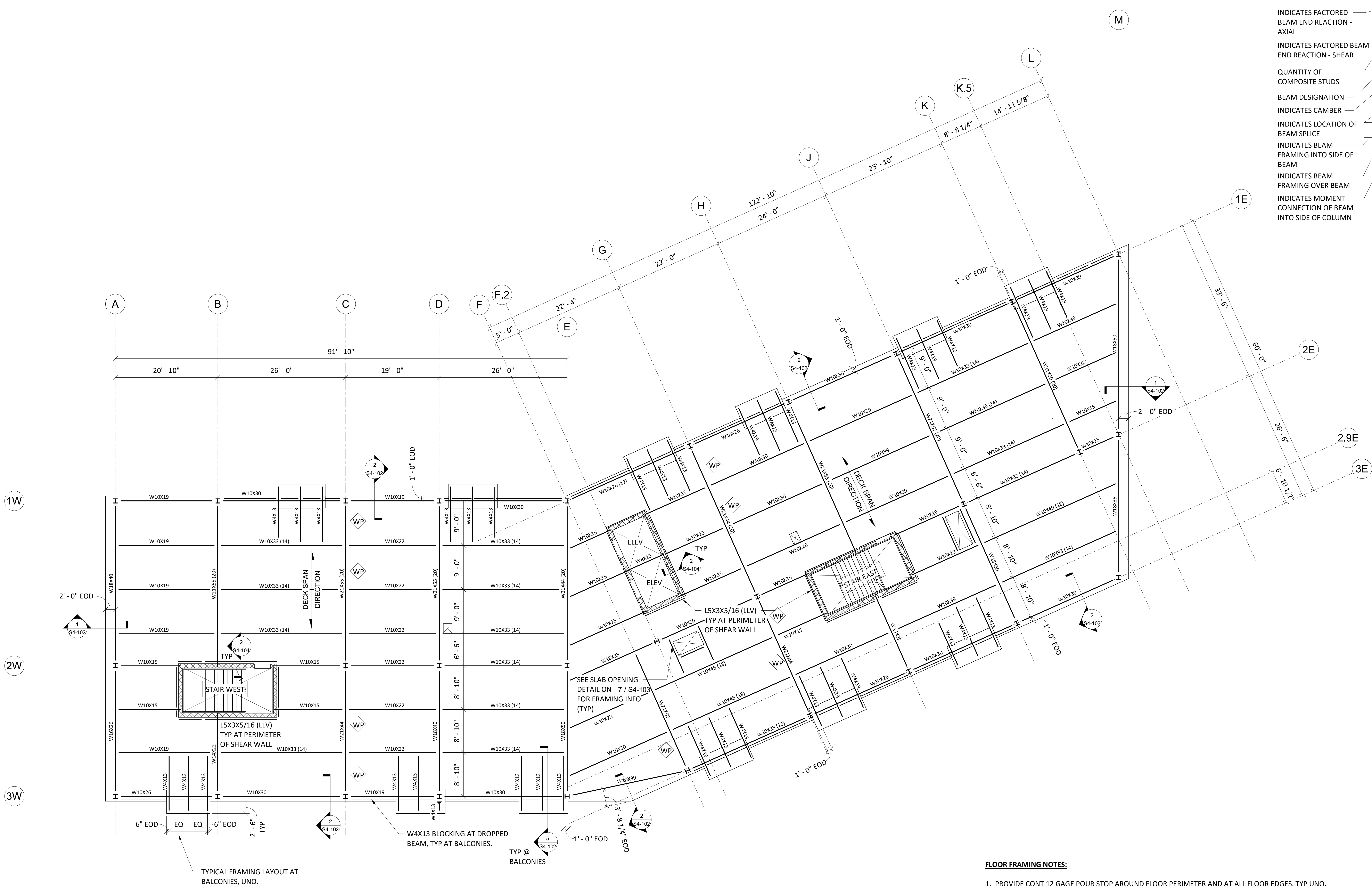
STAMP

SHEET TITLE  
**FRAMING PLAN - LEVEL 5**

S1-105  
SHEET NUMBER  
PROJECT NO 20154



223 WEST OHIO STREET | CHICAGO, ILLINOIS 60654 | +1.312.695.4438 | WWW.JEMA.COM



**FLOOR CONSTRUCTION:**  
**4" LW CONC SLAB**  
ON 1 1/2" VLR 20 Ga. COMP STEEL DECK,  
3 SPAN MINIMUM, REINF  
W/ 6X6 - W2.1XW2.1 WWR  
(4" TOTAL THICKNESS) T/SLAB + 48' - 0"

**FLOOR FRAMING NOTES:**

1. PROVIDE CONT 12 GAGE POUR STOP AROUND FLOOR PERIMETER AND AT ALL FLOOR EDGES, TYP UNO. SUBSTITUTE WITH 1/4" STEEL BENT PLATE WHERE APPLICABLE. SEE TYPICAL SLAB EDGE DETAILS FOR MORE INFORMATION.
2. CONCRETE SLAB THICKNESS ON STEEL DECK INDICATED ON PLAN IS A MINIMUM THICKNESS. PLACE CONCRETE FLOOR SLABS ON STEEL DECK TO THE ELEVATION INDICATED ON PLAN.
3. NON-LOAD BEARING LINTEL LOCATIONS ARE NOT SHOWN ON THE STRUCTURAL DRAWINGS. CONTRACTOR TO COORDINATE NON-LOAD BEARING LINTEL LOCATIONS WITH MECHANICAL AND ARCHITECTURAL DRAWINGS. SEE NON-LOAD BEARING LINTEL SCHEDULE FOR GENERAL WALL TYPES AND OPENING SIZES.
4. ALL STEEL PERMANENTLY EXPOSED TO WEATHER AND ALL LINTELS IN EXTERIOR WALLS SHALL BE HOT DIPPED GALVANIZED, UNO.
5. SEE ARCH AND M/E/P DRAWINGS FOR LOCATIONS FOR FLOOR PENETRATIONS.
6. ALL STEEL FLOOR FRAMING TO RECEIVE SPRAY FIREPROOFING AND SHALL BE LEFT UNPAINTED. REFER TO ARCHITECTURE FOR UL ASSEMBLIES.
7. INDICATES BEAM WEB PENETRATION. SEE DETAIL ON S4-104 FOR SPACING REQUIREMENTS.

TYPICAL FRAMING LAYOUT AT BALCONIES, UNO.

W4X13 BLOCKING AT DROPPED BEAM, TYP AT BALCONIES.

SEE SLAB OPENING DETAIL ON 7 / S4-103 FOR FRAMING INFO (TYP)

L5X3X5/16 (LLV) TYP AT PERIMETER OF SHEAR WALL

- STRUCTURAL STEEL LEGEND:**
- INDICATES BEAM FRAMING OVER TUBE COLUMN
  - INDICATES BEAM FRAMING OVER WF COLUMN
  - INDICATES BEAM FRAMING INTO SIDE OF COLUMN
  - INDICATES FACTORED BEAM END REACTION - AXIAL
  - INDICATES FACTORED BEAM END REACTION - SHEAR
  - QUANTITY OF COMPOSITE STUDS
  - BEAM DESIGNATION
  - INDICATES CAMBER
  - INDICATES LOCATION OF BEAM SPLICE
  - INDICATES BEAM FRAMING INTO SIDE OF BEAM
  - INDICATES BEAM FRAMING OVER BEAM
  - INDICATES MOMENT CONNECTION OF BEAM INTO SIDE OF COLUMN

PROJECT  
**GRACE MANOR**

COLLABORATORS  
**ML STRUCTURAL**  
334 E. Collis St., Unit 17 Palatine, IL 60067

SITE DESIGN GROUP  
888 South Morgan Avenue, Suite 100, Chicago, IL 60605

MEPIS  
36 South Wabash Avenue, Chicago, IL 60603

EVA  
43 West Huron Street, Chicago, IL 60654

CLIENT  
**EAST LAKE MANAGEMENT**  
3401 W Ogden Avenue  
Chicago, IL 60623



|     |                    |            |
|-----|--------------------|------------|
| 2   | 90% PERMIT SET     | 12.17.2021 |
| 1   | DESIGN DEVELOPMENT | 10.15.2021 |
| NO. | DESCRIPTION        | DATE       |

KEY PLAN

STAMP

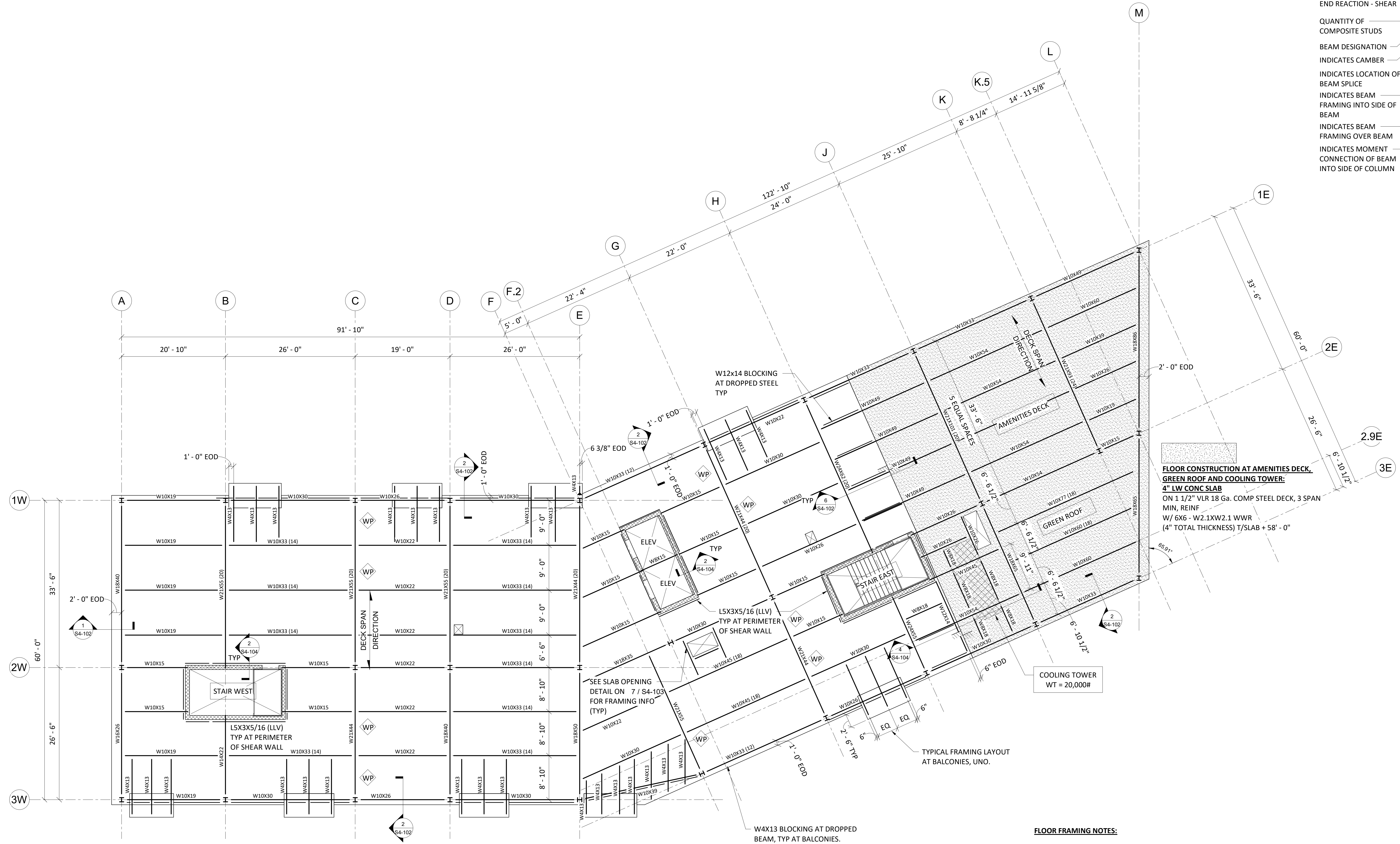
SHEET TITLE

**FRAMING PLAN - LEVEL 6**

**S1-106**

SHEET NUMBER

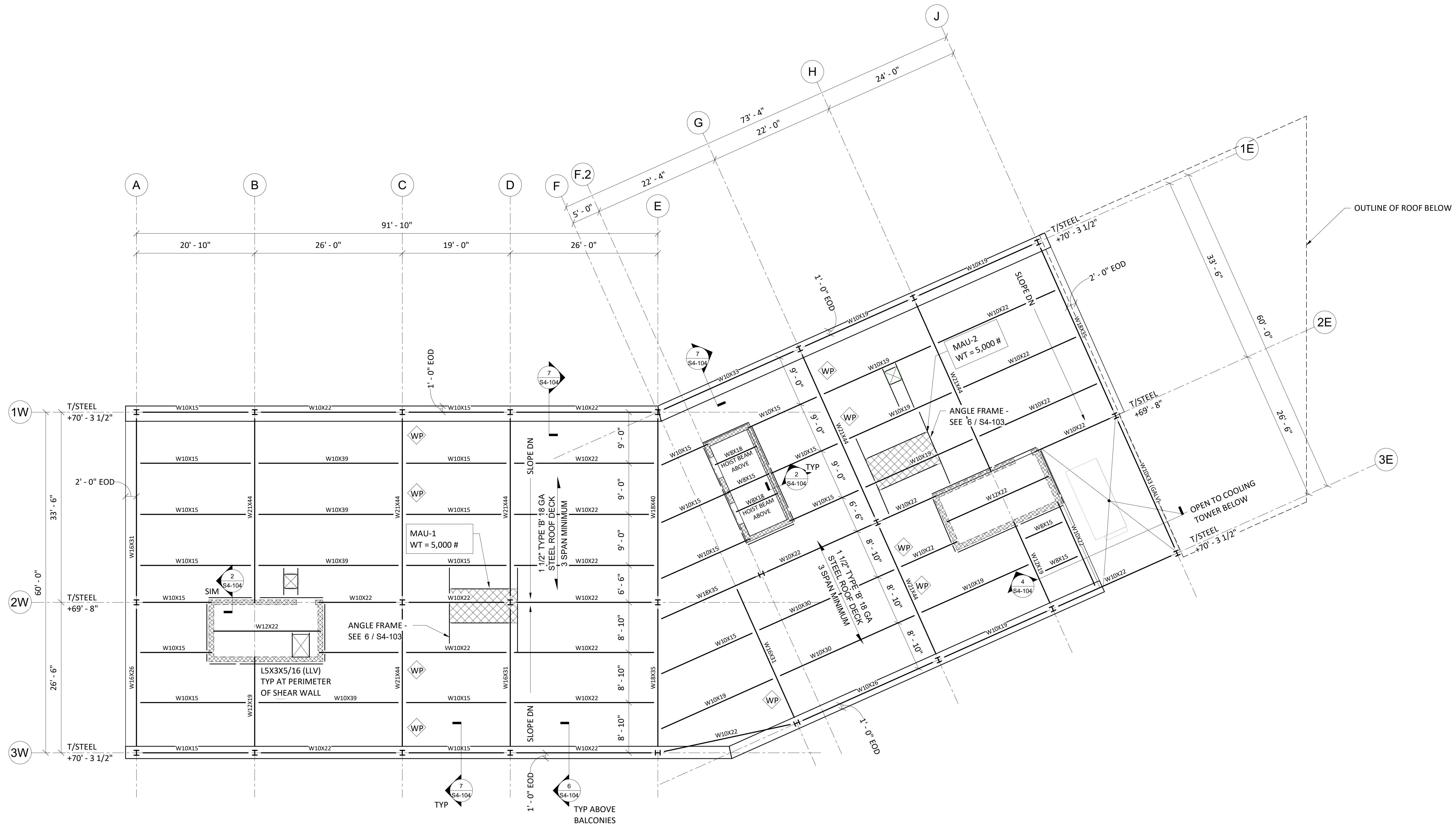
PROJECT NO 20154



**FLOOR CONSTRUCTION:**  
**4" LW CONC SLAB**  
ON 1 1/2" VLR 20 Ga. COMP STEEL DECK,  
3 SPAN MINIMUM, REINF  
W/ 6X6 - W2.1XW2.1 WWR  
(4" TOTAL THICKNESS) T/SLAB + 59' - 0"

**FLOOR CONSTRUCTION AT AMENITIES DECK,  
GREEN ROOF AND COOLING TOWER:**  
**4" LW CONC SLAB**  
ON 1 1/2" VLR 18 Ga. COMP STEEL DECK, 3 SPAN  
MIN. REINF  
W/ 6X6 - W2.1XW2.1 WWR  
(4" TOTAL THICKNESS) T/SLAB + 58' - 0"

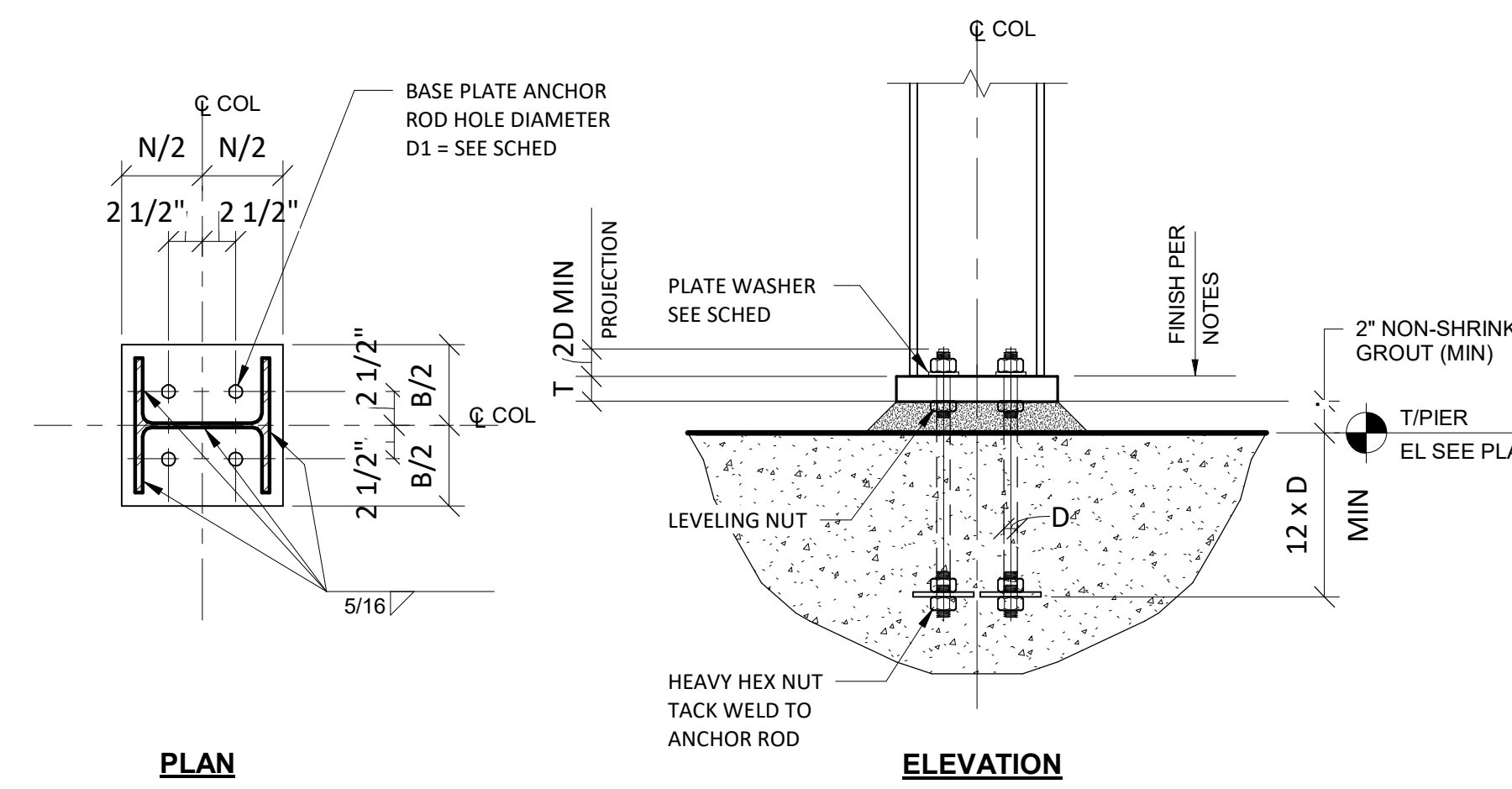
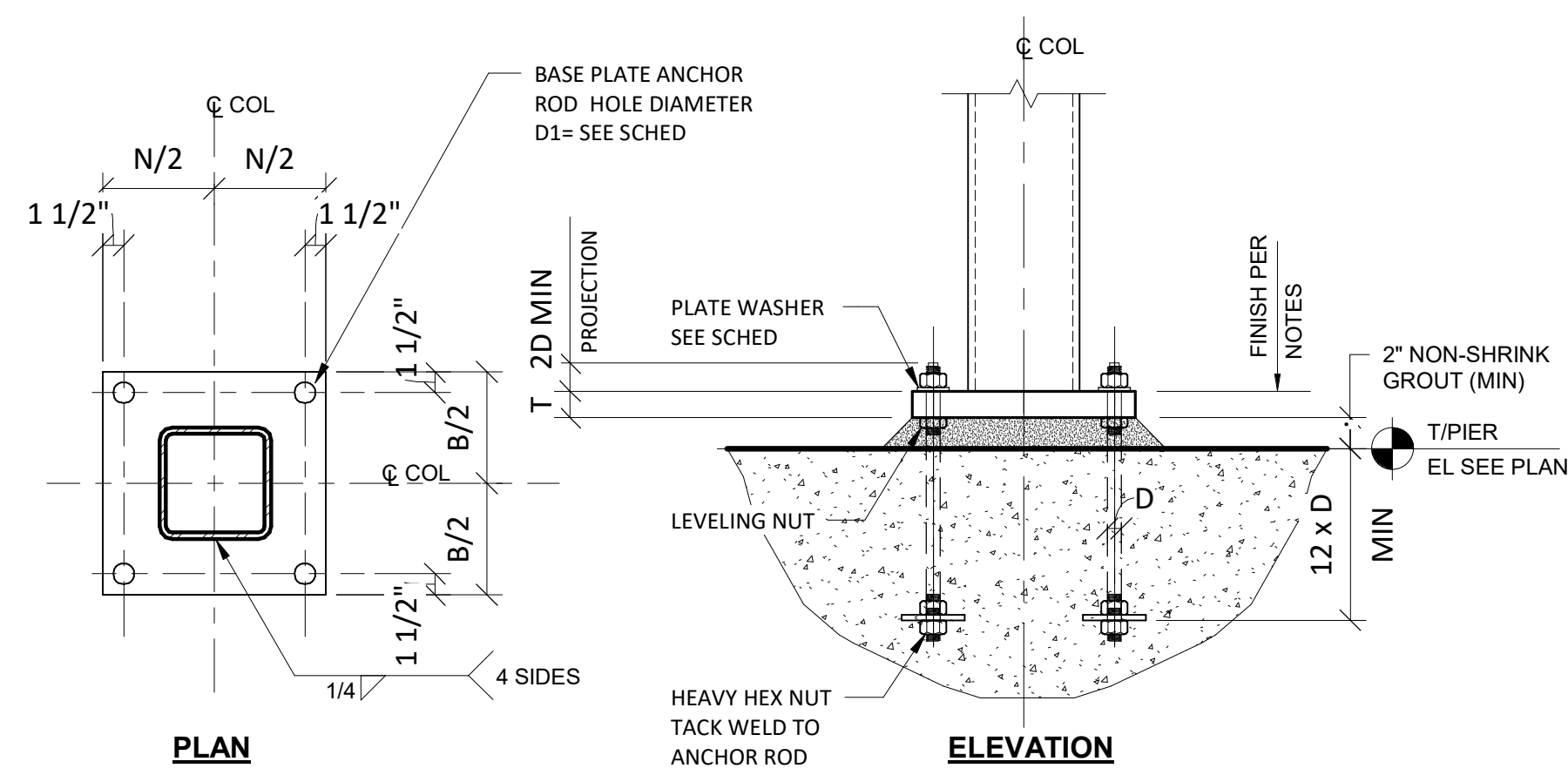
- FLOOR FRAMING NOTES:**
1. PROVIDE CONT 12 GAGE POUR STOP AROUND FLOOR PERIMETER AND AT ALL FLOOR EDGES, TYP UNO. SUBSTITUTE WITH 1/4" STEEL BENT PLATE WHERE APPLICABLE. SEE TYPICAL SLAB EDGE DETAILS FOR MORE INFORMATION.
  2. CONCRETE SLAB THICKNESS ON STEEL DECK INDICATED ON PLAN IS A MINIMUM THICKNESS. PLACE CONCRETE FLOOR SLABS ON STEEL DECK TO THE ELEVATION INDICATED ON PLAN.
  3. NON-LOAD BEARING LINTEL LOCATIONS ARE NOT SHOWN ON THE STRUCTURAL DRAWINGS. CONTRACTOR TO COORDINATE NON-LOAD BEARING LINTEL LOCATIONS WITH MECHANICAL AND ARCHITECTURAL DRAWINGS. SEE NON-LOAD BEARING LINTEL SCHEDULE FOR GENERAL WALL TYPES AND OPENING SIZES.
  4. ALL STEEL PERMANENTLY EXPOSED TO WEATHER AND ALL LINTELS IN EXTERIOR WALLS SHALL BE HOT DIPPED GALVANIZED, UNO.
  5. SEE ARCH AND M/E/P DRAWINGS FOR LOCATIONS FOR FLOOR PENETRATIONS.
  6. ALL STEEL FLOOR FRAMING TO RECEIVE SPRAY FIREPROOFING AND SHALL BE LEFT UNPAINTED. REFER TO ARCHITECTURE FOR UL ASSEMBLIES.
  7. WP INDICATES BEAM WEB PENETRATION. SEE DETAIL ON S4-104 FOR SPACING REQUIREMENTS.



**ROOF FRAMING NOTES:**

1. PROVIDE CONT 1/4" STEEL BENT PLATE AROUND ROOF PERIMETER, TYP UNO. SUBSTITUTE WITH L3x3x1/4 WHERE APPLICABLE.
2. ALL STEEL PERMANENTLY EXPOSED TO WEATHER AND ALL LINTELS IN EXTERIOR WALLS SHALL BE HOT DIPPED GALVANIZED, UNO.
3. SEE ARCH AND M/E/P DRAWINGS FOR LOCATIONS OF ROOF PENETRATIONS. PROVIDE L5x3x5/16 LLV ANGLES TO SUPPORT EQUIPMENT CURBS AROUND PERIMETER OF MECHANICAL UNITS AND TO FRAME OUT ROOF OPENINGS. SEE TYPICAL ROOF OPENING SUPPORT DETAIL AT NEW OR EXISTING ROOF JOISTS AND GENERAL NOTES FOR ADDITIONAL REINFORCING REQUIREMENTS AT MECHANICAL UNITS AND ROOF PENETRATIONS.
4. WP INDICATES BEAM WEB PENETRATION. SEE DETAIL ON S4-104 FOR SPACING REQUIREMENTS.

|  |   |  |  |  |  |  |  |  |  |  |  |  |  |  |  |                      |
|--|---|--|--|--|--|--|--|--|--|--|--|--|--|--|--|----------------------|
| ROOF FRAMING PLAN                              |   |  |  |  |  |  |  |  |  |  |  |  |  |  |  | ROOF FRAMING PLAN    |
| 70' - 0"                                       |   |  |  |  |  |  |  |  |  |  |  |  |  |  |  | 70' - 0"             |
| LEVEL 6 FRAMING PLAN                           |   |  |  |  |  |  |  |  |  |  |  |  |  |  |  | LEVEL 6 FRAMING PLAN |
| 59' - 0"                                       | W10X49  | W10X49                                 |  |  |  | W10X49                                 |  |  |  |  |  |  |  |  |  | 59' - 0"             |
| LEVEL 5 FRAMING PLAN                           |   |  |  |  |  |  |  |  |  |  |  |  |  |  |  | LEVEL 5 FRAMING PLAN |
| 48' - 0"                                       |   |  |  |  |  |  |  |  |  |  |  |  |  |  |  | 48' - 0"             |
| COLUMN SPLICE<br>+ 41' - 0"                    |   |  |  |  |  |  |  |  |  |  |  |  |  |  |  |                      |
| LEVEL 4 FRAMING PLAN                           |   |  |  | W10X54                                 |  |  |  |  |  |  |  |  |  |  | W10X54                                 | LEVEL 4 FRAMING PLAN |
| 37' - 0"                                       |   |  |  |  |  |  |  |  |  |  |  |  |  |  |  | 37' - 0"             |
| LEVEL 3 FRAMING PLAN                           |   |  |  |  |  |  |  |  |  |  |  |  |  |  |  | LEVEL 3 FRAMING PLAN |
| 26' - 0"                                       | W10X54  | W10X54                                 |  |  |  | W10X54                                 |  |  | W10X54                                 | W10X68                                   |  |  |  |  | W10X54                                 | LEVEL 2 FRAMING PLAN |
| LEVEL 2 FRAMING PLAN                           |   |  |  |  |  |  |  |  |  |  |  |  |  |  |  | LEVEL 2 FRAMING PLAN |
| 15' - 0"                                       |   |  |  |  |  |  |  |  |  |  |  |  |  |  |  | 15' - 0"             |
| FOUNDATION PLAN                                |   |  |  |  |  |  |  |  |  |  |  |  |  |  |  | FOUNDATION PLAN      |
| 0"   |   |  |  |  |  |  |  |  |  |  |  |  |  |  |  | 0"                   |
| BASE PLATE<br>ANCHOR RODS<br>ASTM F1554 Gr. 36 | 12"x12"x1"<br>(4) - 3/4" Ø<br>1/54-101  | 12"x12"x1"<br>(4) - 3/4" Ø<br>1/54-101 | 12"x12"x1"<br>(4) - 3/4" Ø<br>1/54-101 | 12"x12"x1"<br>(4) - 3/4" Ø<br>1/54-101 | 12"x12"x3/4"<br>(4) - 3/4" Ø<br>1/54-101 | 12"x12"x1"<br>(4) - 3/4" Ø<br>1/54-101 | 12"x12"x3/4"<br>(4) - 3/4" Ø<br>1/54-101 | 12"x12"x3/4"<br>(4) - 3/4" Ø<br>1/54-101 | 12"x12"x1"<br>(4) - 3/4" Ø<br>1/54-101 | 12"x12"x3/4"<br>(4) - 3/4" Ø<br>1/54-101 | 12"x12"x1"<br>(4) - 3/4" Ø<br>1/54-101 | 12"x12"x3/4"<br>(4) - 3/4" Ø<br>1/54-101 | 12"x12"x1"<br>(4) - 3/4" Ø<br>1/54-101 | 12"x12"x1"<br>(4) - 3/4" Ø<br>1/54-101 | 12"x12"x1"<br>(4) - 3/4" Ø<br>1/54-101 |                      |
| CAP PLATE<br>ASTM A36                          | 3/4" PLATE  | 3/4" PLATE                             | 3/4" PLATE                             | 3/4" PLATE                             | 3/4" PLATE                               | 3/4" PLATE                             | 3/4" PLATE                               | 3/4" PLATE                               | 3/4" PLATE                             | 3/4" PLATE                               | 3/4" PLATE                             | 3/4" PLATE                               | 3/4" PLATE                             | 3/4" PLATE                             | 3/4" PLATE                             |                      |
| Column Locations                               | A-1W, B-1W, B-3W, C-1W,<br>C-3W, D-1W, D-3W, E-1E,<br>E-3W, F-2.8W, G-1E, G-3E,<br>H-1E, H-3E, J-1E, J-3E | A-2W, F-2-2E                           | A-2.8W                                 | A-3W                                   | C-1.1W, G-1.1E                           | C-2W, D-2W, E-2W, G-2E,<br>J-2E        | D-1.1W, H-1.1E                           | E-1.1W, J-1.1E, K-9-1.1E                 | K-1E, L-1E, K-5-M                      | K-1.1E                                   | K-2E                                   | L-9-1.1E                                 | M-2.9E                                 | M-3E                                   |  |                      |



1 GRAVITY COLUMN BASE PLATE DETAIL  
1" = 1'-0"

PROJECT  
**GRACE MANOR**

CLIENT  
**EAST LAKE MANAGEMENT**  
3401 W Ogden Avenue  
Chicago, IL 60623

COLLABORATORS  
**ML STRUCTURAL**  
334 E. Collins St., Unit 17 Palatine, IL 60067

SITE DESIGN GROUP  
888 South Morgan Avenue Suite 100 Chicago, IL 60605

MEPIS  
36 South Wabash Avenue, Chicago, IL 60603

EVA  
43 West Huron Street Chicago, IL 60654

2 90% PERMIT SET 12.17.2021  
1 DESIGN DEVELOPMENT 10.15.2021  
NO. DESCRIPTION DATE

KEY PLAN

STAMP

SHEET TITLE

COLUMN SCHEDULE

S4-101

SHEET NUMBER

PROJECT NO 20154

© JGMA 2021

WWW.JGMA.COM

223 WEST OHIO STREET | CHICAGO, ILLINOIS 60654 | +1.312.695.4438

DOB APPROVAL STAMPS

JGMA