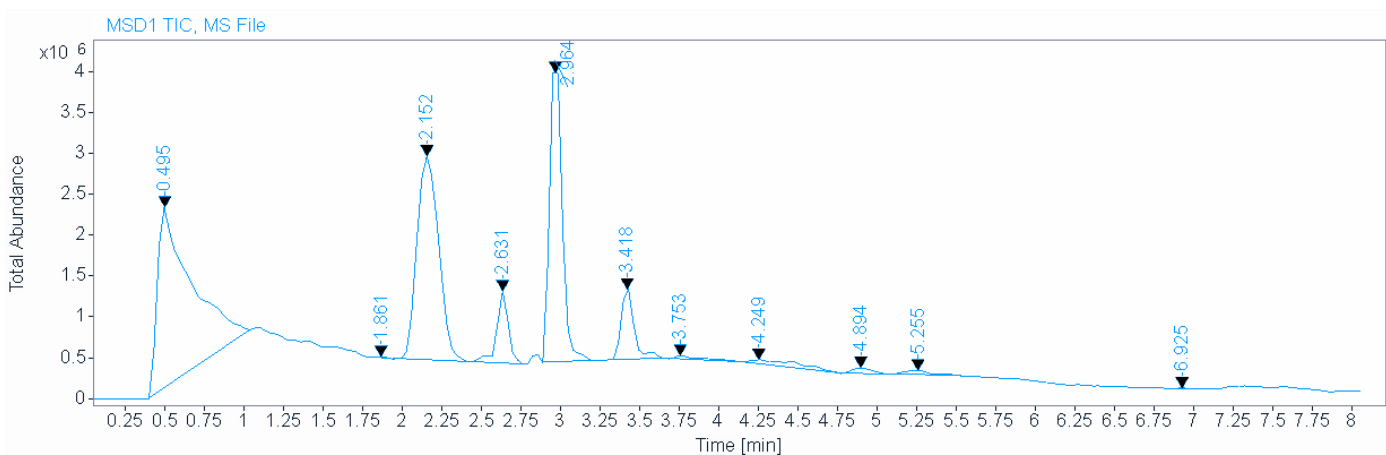
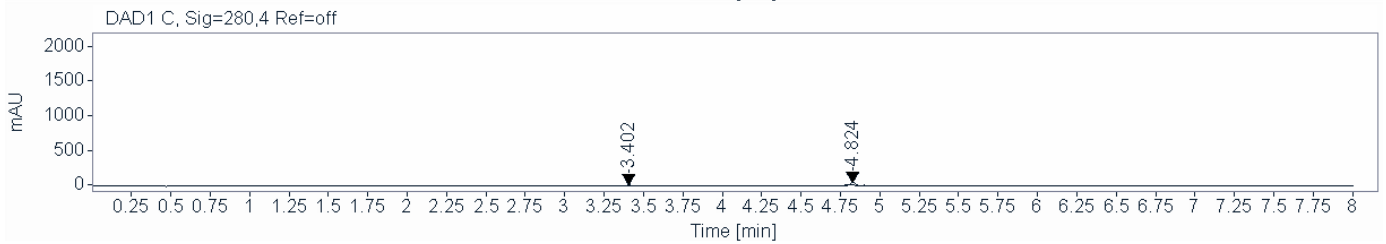
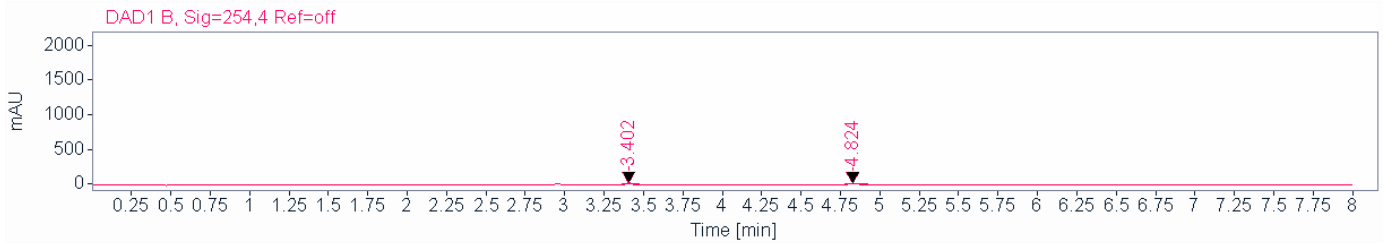
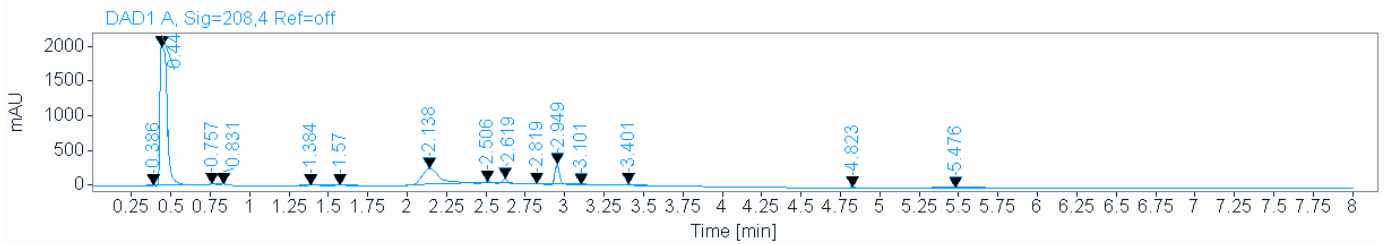


Single Injection Report



Agilent Technologies

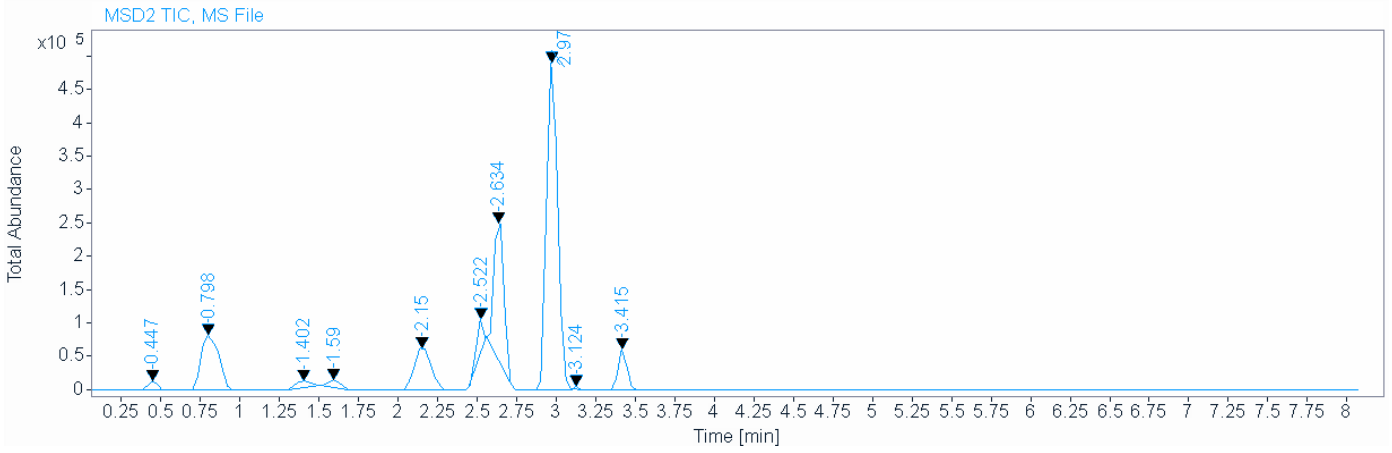
Data file: C:\Users\Public\Documents\ChemStation\1\Data\TODD\QX1\XQ1 2024-06-10 16-45-34\001-P1-D1-R18.D
Sample name: R18
Description:
Sample amount: 0.000 **Sample type:** Sample
Instrument: G25LCMS **Location:** P1-D1
Injection date: 6/10/2024 4:47:42 PM **Injection:** 1 of 1
Acq. method: EGT_8min pos+neg_longMeCN.M **Injection volume:** 2.000
Analysis method: EGT_8min pos+neg_longMeC **Acq. operator:** Dunya Lafta
N.M
Last changed: 6/10/2024 5:08:42 PM
(modified after loading)



Single Injection Report



Agilent Technologies

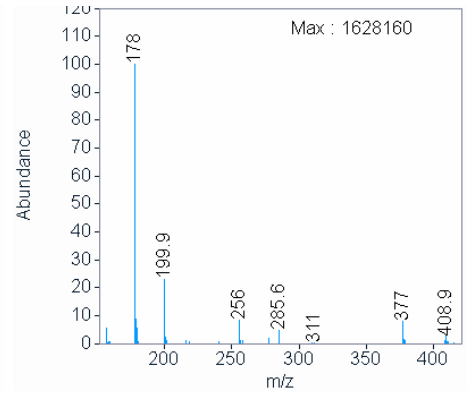
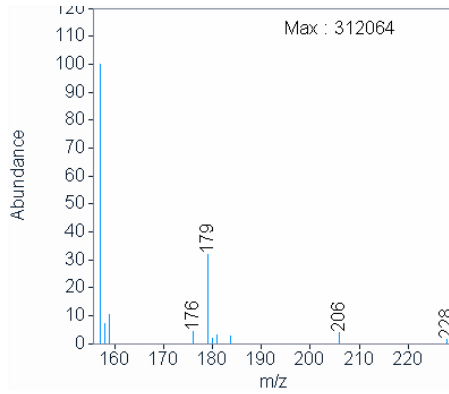
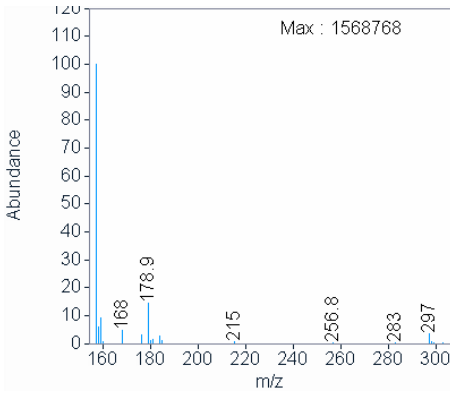


Signal MSD1 TIC, MS File

Peak RT 0.495

Peak RT 1.861

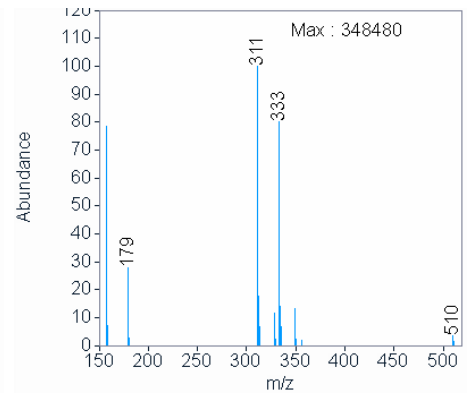
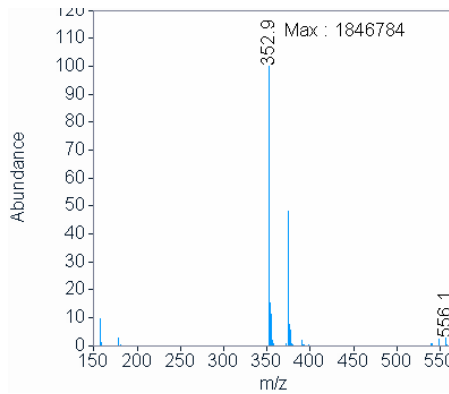
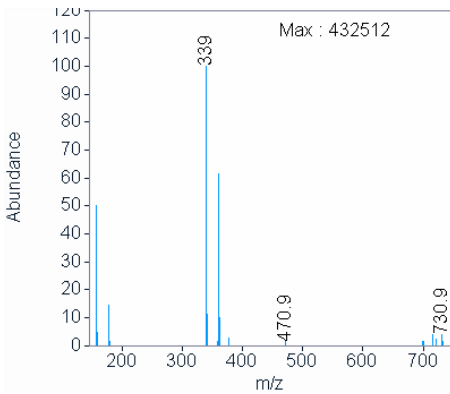
Peak RT 2.152



Peak RT 2.631

Peak RT 2.964

Peak RT 3.418

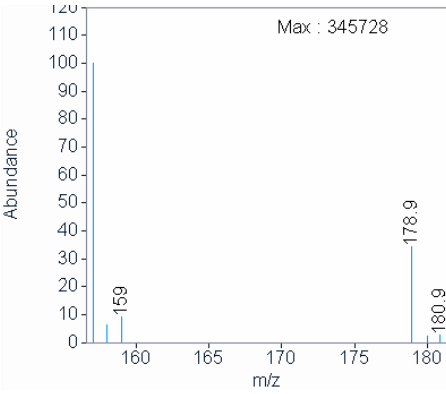


Single Injection Report

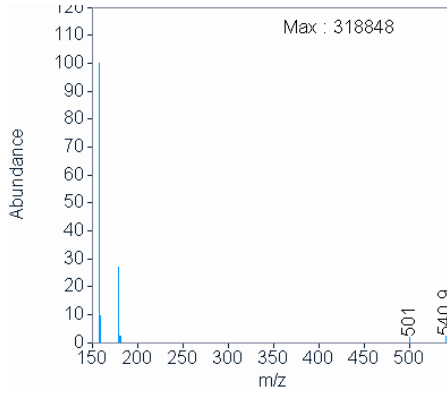


Agilent Technologies

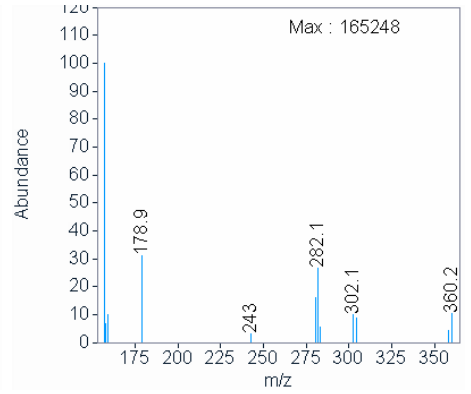
Peak RT 3.753



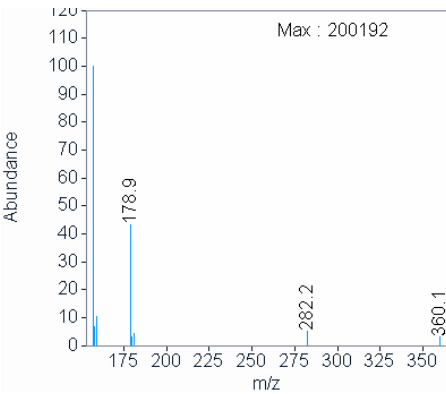
Peak RT 4.249



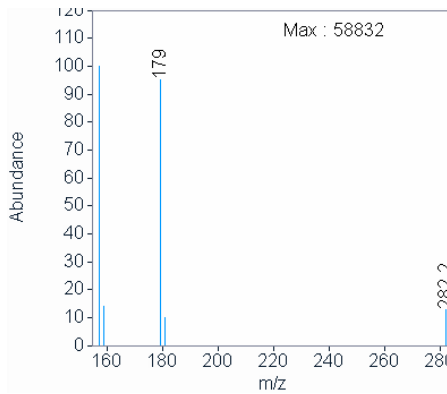
Peak RT 4.894



Peak RT 5.255

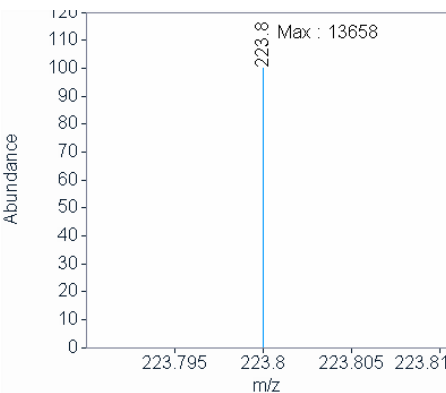


Peak RT 6.925

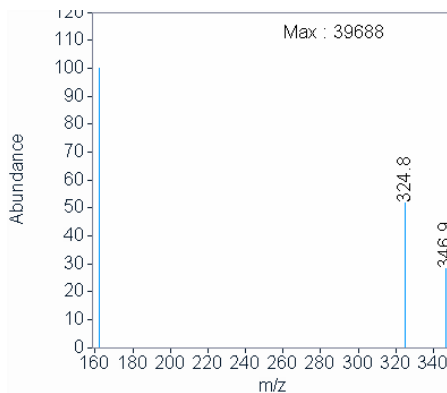


Signal MSD2 TIC, MS File

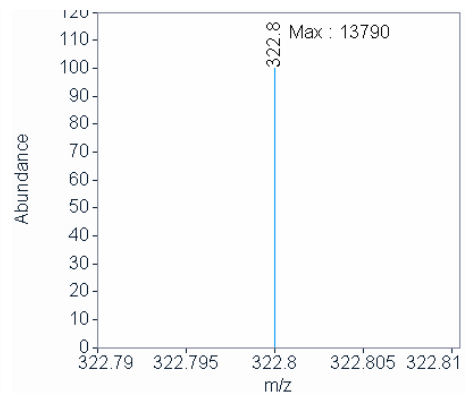
Peak RT 0.447



Peak RT 0.798



Peak RT 1.402

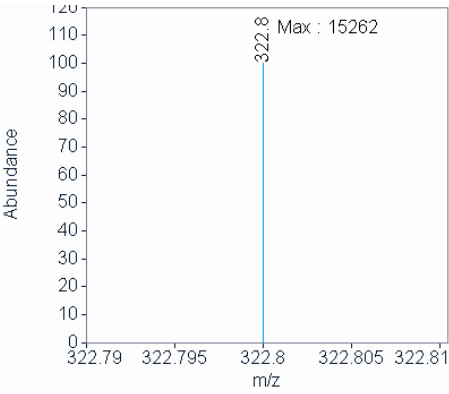


Single Injection Report

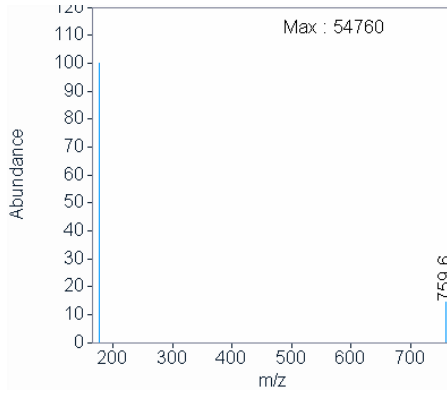


Agilent Technologies

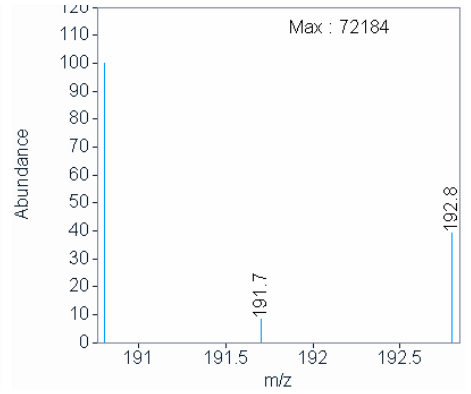
Peak RT 1.590



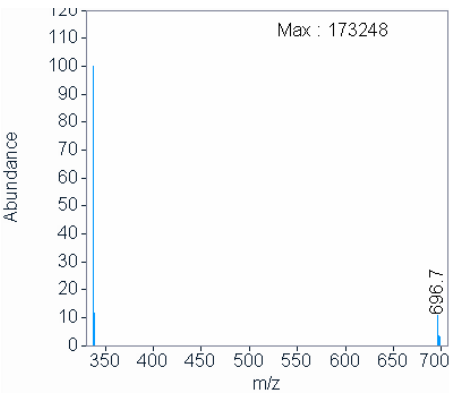
Peak RT 2.150



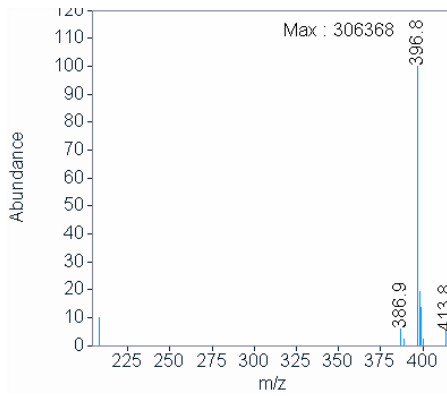
Peak RT 2.522



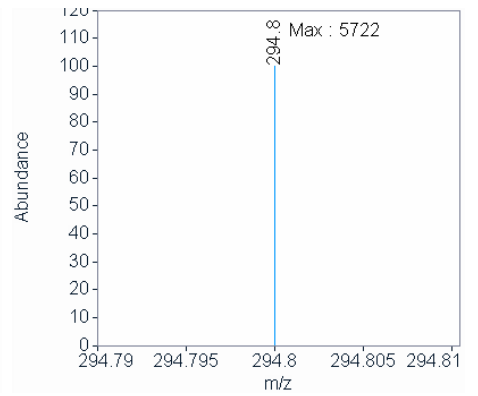
Peak RT 2.634



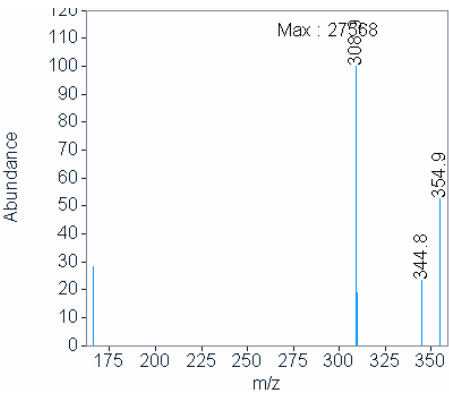
Peak RT 2.970



Peak RT 3.124



Peak RT 3.415



Single Injection Report



Agilent Technologies

Signal: DAD1 A, Sig=208,4 Ref=off

RT [min]	Type	Width [min]	Area	Height	Area%	Name
0.386	BB	0.0323	6.2735	3.3561	0.0658	
0.440	BB	0.0518	6456.2075	1993.0372	67.6997	
0.757	BB	0.0432	32.9111	11.9066	0.3451	
0.831	BB	0.0391	18.0698	7.2546	0.1895	
1.384	BB	0.0781	15.5724	2.6869	0.1633	
1.570	BB	0.0704	12.4132	2.7927	0.1302	
2.138	BB	0.1239	1888.5343	233.2851	19.8032	
2.506	BB	0.0479	72.6548	23.9700	0.7619	
2.619	BB	0.0347	162.6559	71.1102	1.7056	
2.819	BB	0.0461	11.2454	3.7431	0.1179	
2.949	BB	0.0325	591.2871	293.0474	6.2002	
3.101	BB	0.0480	7.9688	2.3827	0.0836	
3.401	BB	0.0374	51.6990	21.6287	0.5421	
4.823	BB	0.0493	48.7286	15.4473	0.5110	
5.476	BB	0.5515	160.3128	3.4096	1.6810	
	Sum		9536.5344			

Signal: DAD1 B, Sig=254,4 Ref=off

RT [min]	Type	Width [min]	Area	Height	Area%	Name
3.402	MM	0.0382	66.9743	29.2402	59.1427	
4.824	MM	0.0445	46.2677	17.3226	40.8573	
	Sum		113.2420			

Signal: DAD1 C, Sig=280,4 Ref=off

RT [min]	Type	Width [min]	Area	Height	Area%	Name
3.402	MM	0.0344	22.1217	10.7234	15.5038	
4.824	MM	0.0458	120.5637	43.8358	84.4962	
	Sum		142.6854			

Single Injection Report



Agilent Technologies

Signal: MSD1 TIC, MS File

RT [min]	Type	Width [min]	Area	Height	Area%	Name
0.495	BB	0.1924	32868012.00	2212822.500	36.4173	
			00	0		
1.861	BB	0.0733	76773.6875	17452.4102	0.0851	
2.152	BB	0.1596	23892344.00	2494197.000	26.4724	
			00	0		
2.631	BB	0.1174	4560348.500	887296.0625	5.0528	
			0			
2.964	BB	0.0881	20245560.00	3827907.250	22.4318	
			00	0		
3.418	BB	0.0854	5013931.000	882247.1875	5.5554	
			0			
3.753	BB	0.2062	599197.5000	48424.3359	0.6639	
4.249	BB	0.3810	1545701.750	53028.3750	1.7126	
			0			
4.894	BB	0.1515	655292.0000	73783.1094	0.7261	
5.255	BB	0.1872	720990.1250	56488.9727	0.7988	
6.925	BB	0.0825	75572.3906	13907.5176	0.0837	
		Sum	90253722.95			

Signal: MSD2 TIC, MS File

RT [min]	Type	Width [min]	Area	Height	Area%	Name
0.447	BB	0.0667	54907.8594	13724.3408	1.0935	
0.798	BB	0.1290	643195.4375	82718.1094	12.8095	
1.402	BB	0.1187	71944.2109	10443.5869	1.4328	
1.590	BB	0.0929	63377.8438	11513.9160	1.2622	
2.150	BB	0.1199	472148.2500	65646.0469	9.4031	
2.522	BB	0.0501	158589.8281	52731.1836	3.1584	
2.634	BB	0.0686	911681.0625	214949.1250	18.1566	
2.970	BB	0.0806	2402949.250	496814.8438	47.8559	
			0			
3.124	BB	0.0281	8338.3018	4945.9727	0.1661	
3.415	BBA	0.0629	234089.7500	62069.1719	4.6620	
		Sum	5021221.793			