

ODM Quality Report

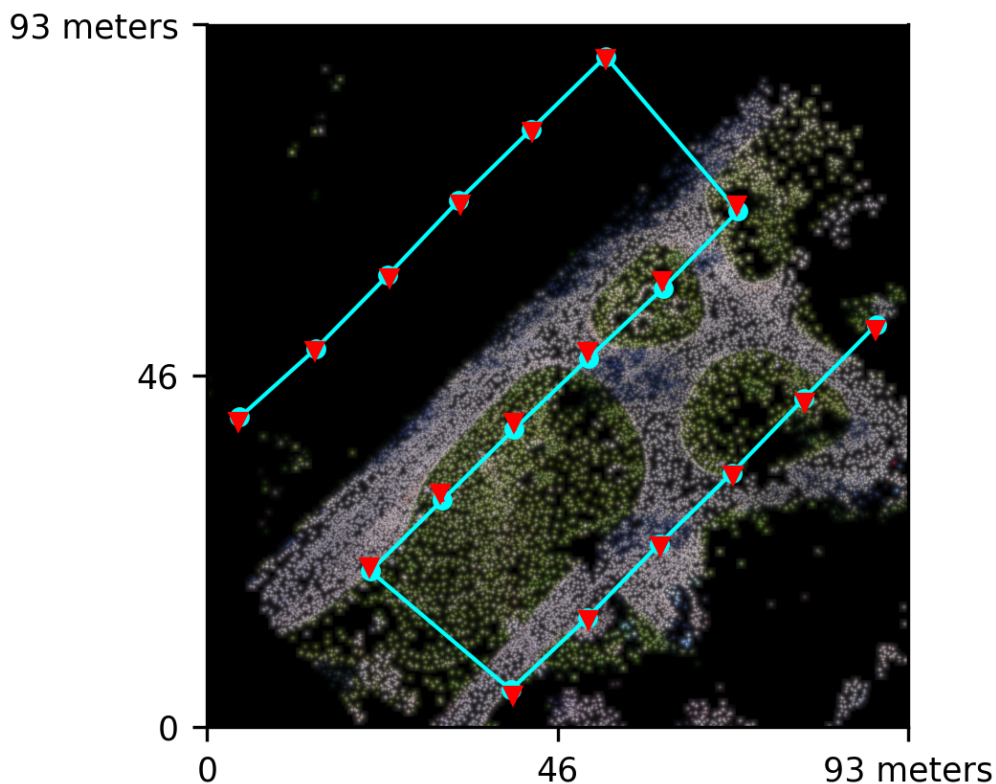
Processed with ODM version 3.5.3

Dataset Summary

Date	16/07/2024 at 18:16:21
Area Covered	0.007052 km ²
Processing Time	2.0m:37.0s
Capture Start	23/06/2016 at 16:31:59
Capture End	23/06/2016 at 16:34:03

Processing Summary

Reconstructed Images	18 over 18 shots (100.0%)
Reconstructed Points (Sparse)	29931 over 30329 points (98.7%)
Reconstructed Points (Dense)	1,366,488 points
Average Ground Sampling Distance (GSD)	1.6 cm
Detected Features	35,735 features
Reconstructed Features	4,598 features
Geographic Reference	GPS
GPS errors	0.66 meters



Previews



Orthophoto

Survey Data



■ 2 ■ 3 ■ 4 ■ 5+

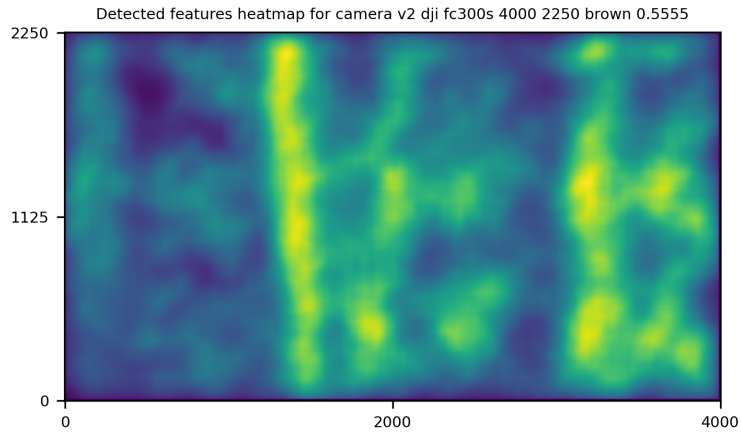
GPS/GCP/3D Errors Details

GPS	Mean	Standard Deviation	RMS Error
X Error (meters)	0.001	0.144	0.144
Y Error (meters)	-0.008	0.601	0.601
Z Error (meters)	0.013	0.339	0.339
Total			0.658

3D	Mean	Standard Deviation	RMS Error
X Error (meters)	0.008	0.007	0.011
Y Error (meters)	0.008	0.009	0.012
Z Error (meters)	0.012	0.015	0.019
Total			0.017

	Absolute	Relative
Horizontal Accuracy CE90 (meters)	0.892	0.022
Vertical Accuracy LE90 (meters)	0.495	0.028

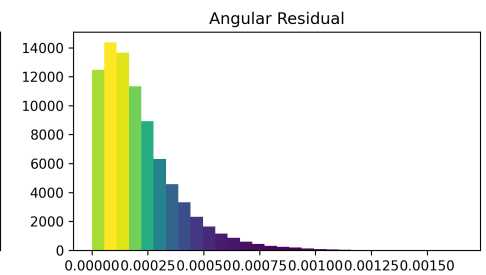
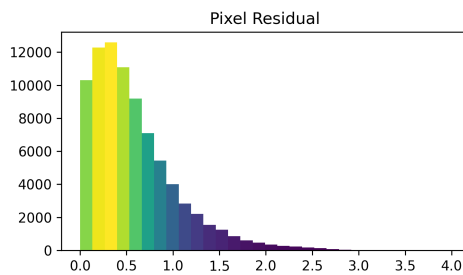
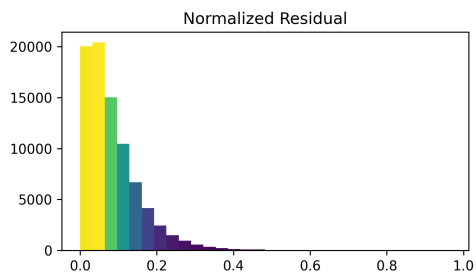
Features Details



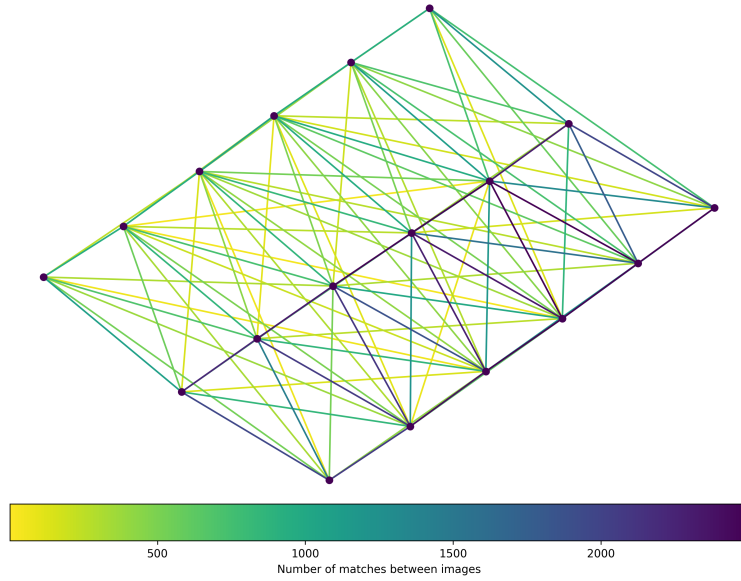
	Min.	Max.	Mean	Median
Detected	28695	40664	36218	35735
Reconstructed	1965	8170	4643	4598

Reconstruction Details

Average Reprojection Error (normalized / pixels / angular)	0.08 / 0.58 / 0.00021
Average Track Length	2.79 images
Average Track Length (> 2)	3.92 images



Tracks Details



Length	2	3	4	5	6	7	8	9
Count	17595	6066	3064	1917	830	326	111	22

Camera Models Details

v2 dji fc300s 4000 2250 brown 0.5555

	k1	k2	k3	p1	p2	focal	aspect_ratio	cx	cy
Initial	0.0000	0.0000	0.0000	0.0000	0.0000	0.5556	1.0000	0.0000	0.0000
Optimized	0.0133	0.0054	0.0073	0.0003	0.0025	0.5647	1.0000	-0.0054	0.0079

