

ODM Quality Report

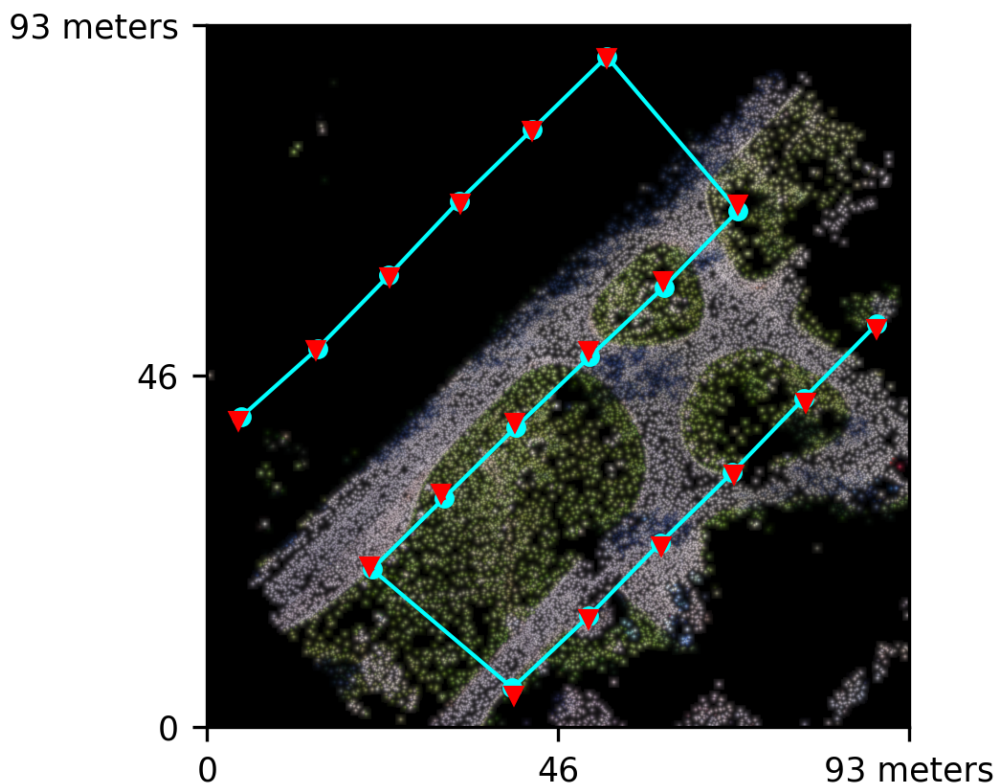
Processed with ODM version 3.5.3

Dataset Summary

Date	16/07/2024 at 19:25:30
Area Covered	0.006985 km ²
Processing Time	3.0m:4.0s
Capture Start	23/06/2016 at 16:31:59
Capture End	23/06/2016 at 16:34:03

Processing Summary

Reconstructed Images	18 over 18 shots (100.0%)
Reconstructed Points (Sparse)	29967 over 30255 points (99.0%)
Reconstructed Points (Dense)	1,372,682 points
Average Ground Sampling Distance (GSD)	1.6 cm
Detected Features	29,740 features
Reconstructed Features	5,058 features
Geographic Reference	GPS
GPS errors	0.66 meters

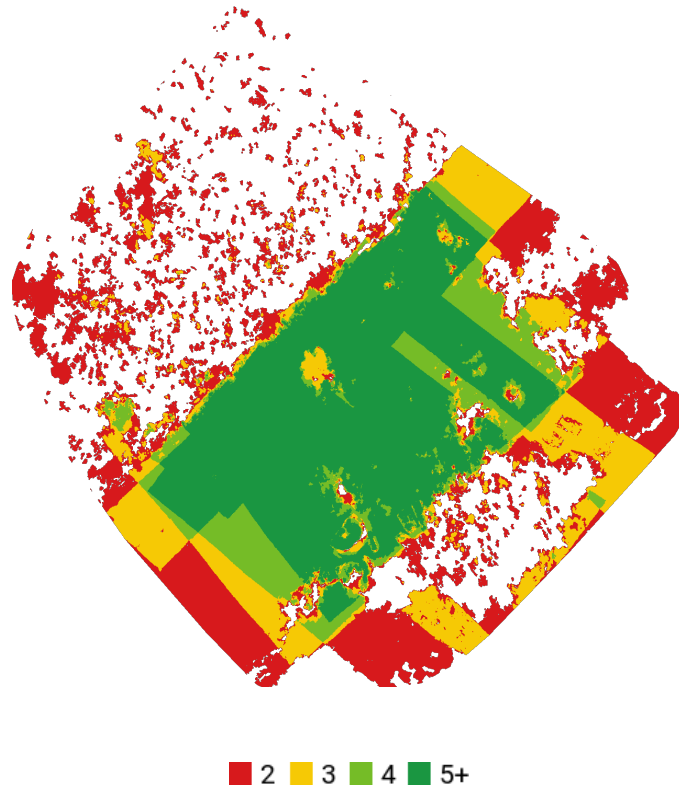


Previews



Orthophoto

Survey Data



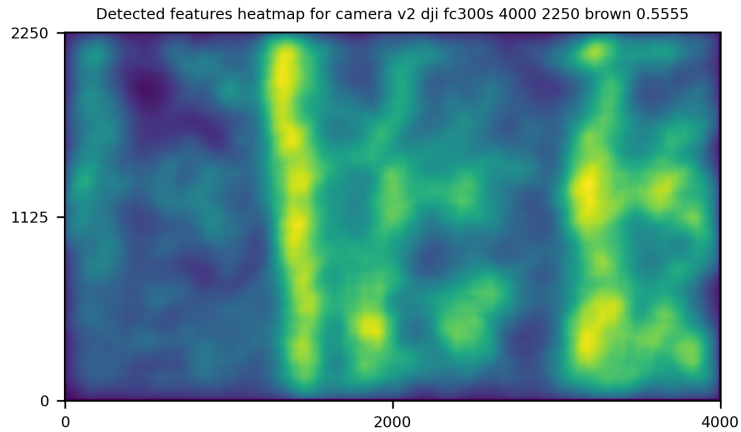
GPS/GCP/3D Errors Details

GPS	Mean	Standard Deviation	RMS Error
X Error (meters)	0.042	0.178	0.183
Y Error (meters)	0.006	0.564	0.564
Z Error (meters)	0.144	0.348	0.377
Total			0.661

3D	Mean	Standard Deviation	RMS Error
X Error (meters)	0.009	0.010	0.014
Y Error (meters)	0.009	0.011	0.015
Z Error (meters)	0.016	0.022	0.028
Total			0.022

	Absolute	Relative
Horizontal Accuracy CE90 (meters)	0.935	0.030
Vertical Accuracy LE90 (meters)	0.556	0.039

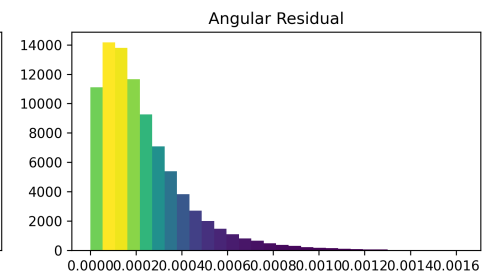
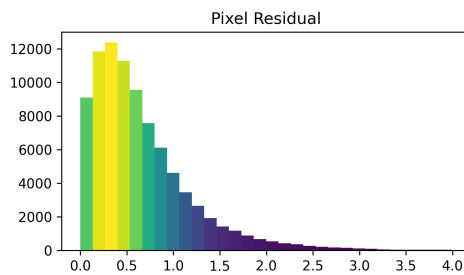
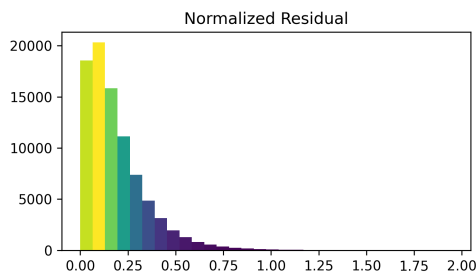
Features Details



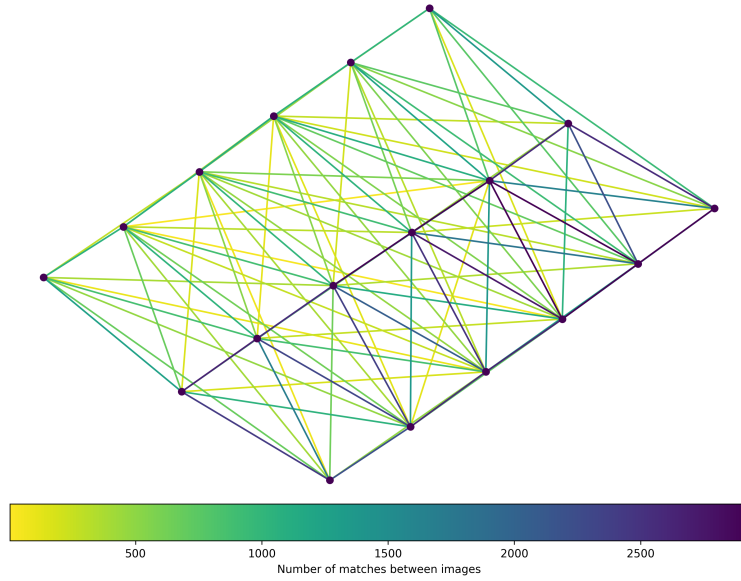
	Min.	Max.	Mean	Median
Detected	23222	33049	29776	29740
Reconstructed	2014	8606	4872	5058

Reconstruction Details

Average Reprojection Error (normalized / pixels / angular)	0.19 / 0.65 / 0.00023
Average Track Length	2.93 images
Average Track Length (> 2)	4.06 images



Tracks Details



Length	2	3	4	5	6	7	8	9
Count	16461	6080	3348	2320	1042	476	199	41

Camera Models Details

v2 dji fc300s 4000 2250 brown 0.5555

	k1	k2	k3	p1	p2	focal	aspect_ratio	cx	cy
Initial	0.0000	0.0000	0.0000	0.0000	0.0000	0.5556	1.0000	0.0000	0.0000
Optimized	0.0145	0.0055	0.0101	0.0001	0.0023	0.5893	1.0000	-0.0042	0.0080

