

ODM Quality Report

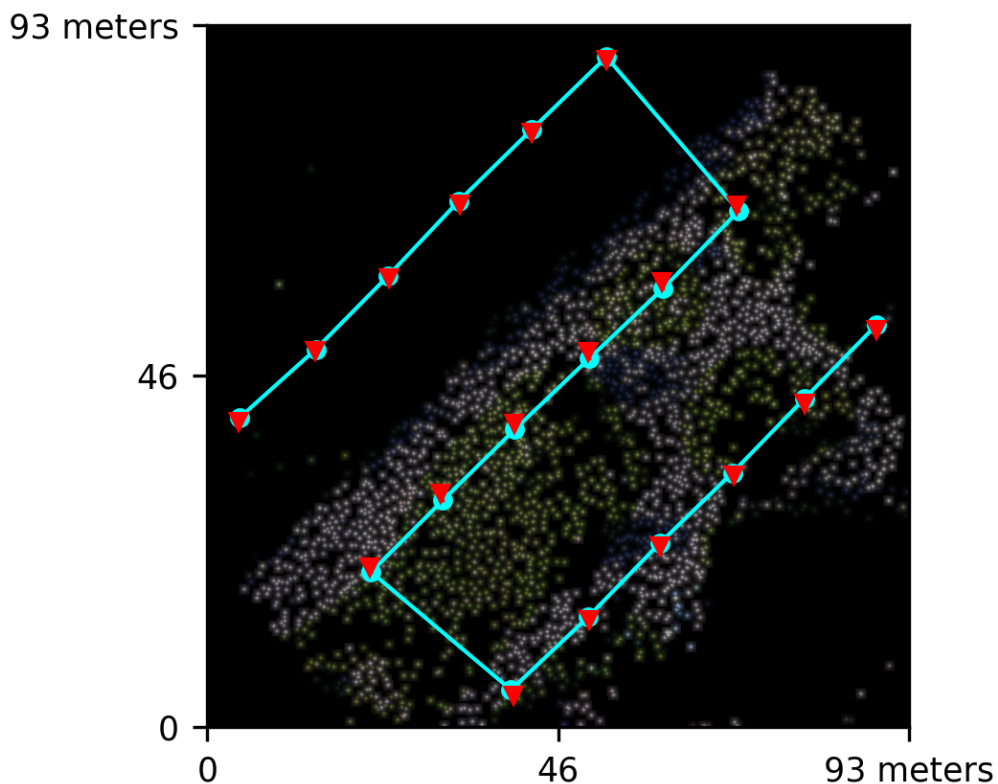
Processed with ODM version 3.5.3

Dataset Summary

Date	16/07/2024 at 20:15:26
Area Covered	0.007055 km ²
Processing Time	1.0m:4.0s
Capture Start	23/06/2016 at 16:31:59
Capture End	23/06/2016 at 16:34:03

Processing Summary

Reconstructed Images	18 over 18 shots (100.0%)
Reconstructed Points (Sparse)	3250 over 3328 points (97.7%)
Reconstructed Points (Dense)	1,456,228 points
Average Ground Sampling Distance (GSD)	1.6 cm
Detected Features	2,165 features
Reconstructed Features	613 features
Geographic Reference	GPS
GPS errors	0.62 meters

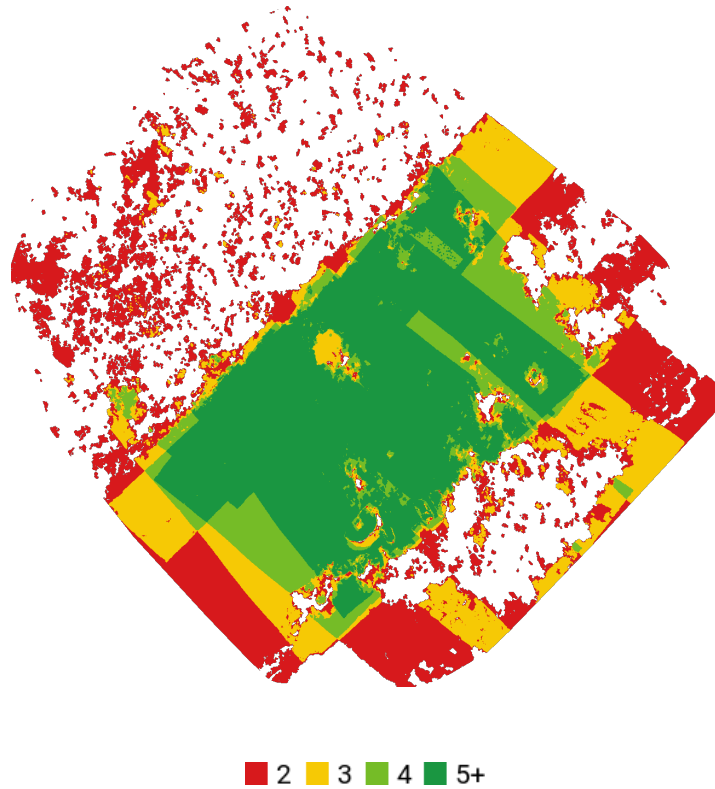


Previews



Orthophoto

Survey Data



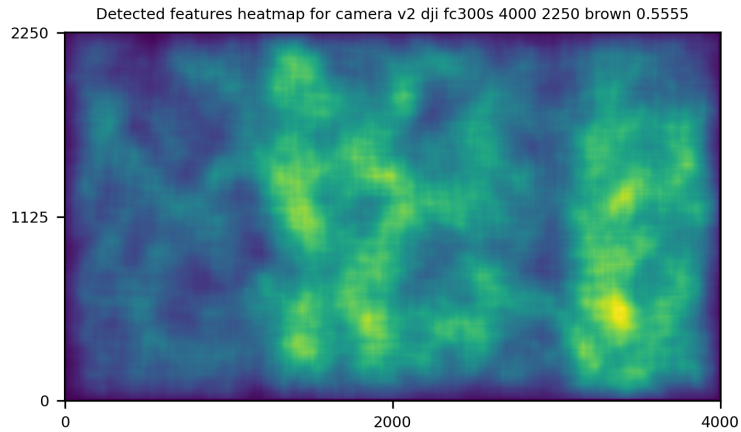
GPS/GCP/3D Errors Details

GPS	Mean	Standard Deviation	RMS Error
X Error (meters)	-0.002	0.153	0.153
Y Error (meters)	0.003	0.608	0.608
Z Error (meters)	0.001	0.178	0.178
Total			0.616

3D	Mean	Standard Deviation	RMS Error
X Error (meters)	0.020	0.028	0.035
Y Error (meters)	0.018	0.021	0.028
Z Error (meters)	0.032	0.055	0.063
Total			0.046

	Absolute	Relative
Horizontal Accuracy CE90 (meters)	0.907	0.058
Vertical Accuracy LE90 (meters)	0.266	0.071

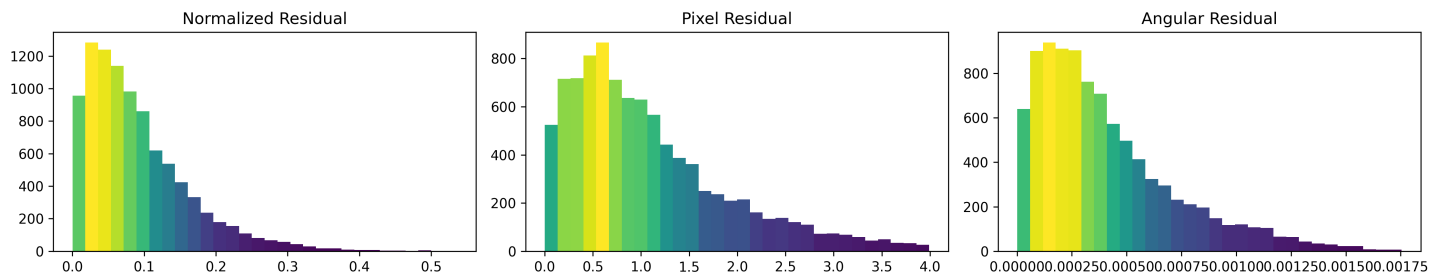
Features Details



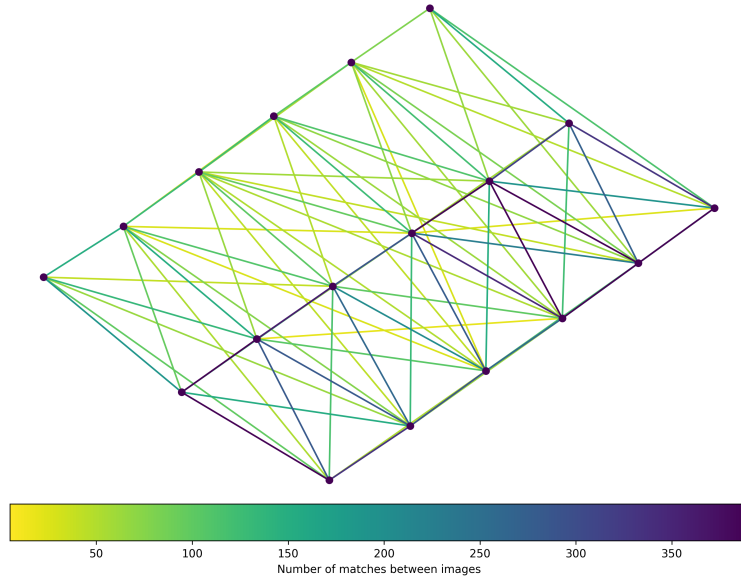
	Min.	Max.	Mean	Median
Detected	1953	2583	2222	2165
Reconstructed	191	882	547	613

Reconstruction Details

Average Reprojection Error (normalized / pixels / angular)	0.09 / 1.08 / 0.00041
Average Track Length	3.03 images
Average Track Length (> 2)	4.07 images



Tracks Details



Length	2	3	4	5	6	7	8	9
Count	1630	686	436	299	127	47	21	4

Camera Models Details

v2 dji fc300s 4000 2250 brown 0.5555

	k1	k2	k3	p1	p2	focal	aspect_ratio	cx	cy
Initial	0.0000	0.0000	0.0000	0.0000	0.0000	0.5556	1.0000	0.0000	0.0000
Optimized	0.0010	0.0037	0.0062	-0.0001	0.0020	0.5557	1.0000	-0.0025	0.0025

