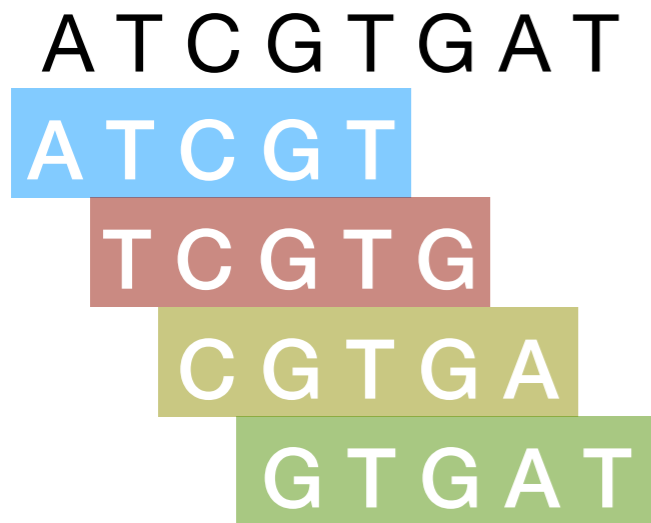


# Minimizer VS. Open Syncmer sketching

Minimizer:  $k=5, w=4$



Label kmer by some ordering  
(e.g., random hashing)



Select smallest kmer in the ordering



Open Syncmer:  $k=5, s=3, t=2$

For each kmer above:



Label s-kmer by some ordering  
(e.g., random hashing)



If  $t=3$ , then this kmer  
will be selected;  
If  $t \neq 3$ , this kmer will  
not be selected

$$OS(A^k) = \{x \in A^k \text{ s.t. } \arg \min_{m \in [1, k-s+1]} h(x[m : m+s-1]) = t\}$$

$$2 \leq s < k; 1 \leq t \leq s$$

- Open Syncmer is more sensitive to distantly related sequences