

As the Astra series cameras are old model, you first need to install the Orbbec camera driver. At the same time, OrbbecSDK may not be supported. You can use OpenNI SDK to check the effect first. Some cameras can be upgraded to the latest firmware to support the use of OrbbecSDK. Take Astra pro plus as an example:

1、 Download OpenNI SDK and drivers: <https://www.orbbec.com/developers/openni-sdk/>:

## OpenNI SDK

Windows

System Requirements:

- Windows 10+
- USB 3.0
- Duo Core 1.9GHz+
- 4GB+ RAM

Supports Astra Series, Astra Mini (S), Astra Mini Pro, Astra Stereo S U3, Astra Embedded S, Gemini E

Pre-Requisites for Windows

- OpenNI SDK 2.3.0.86 for Windows
- \*Orbbec Camera Driver for Windows

\*Only required for OpenNI and Astra SDK supported cameras

2. After installing the driver, open the device manager, you may see a device with an exclamation mark. We can update the driver first:

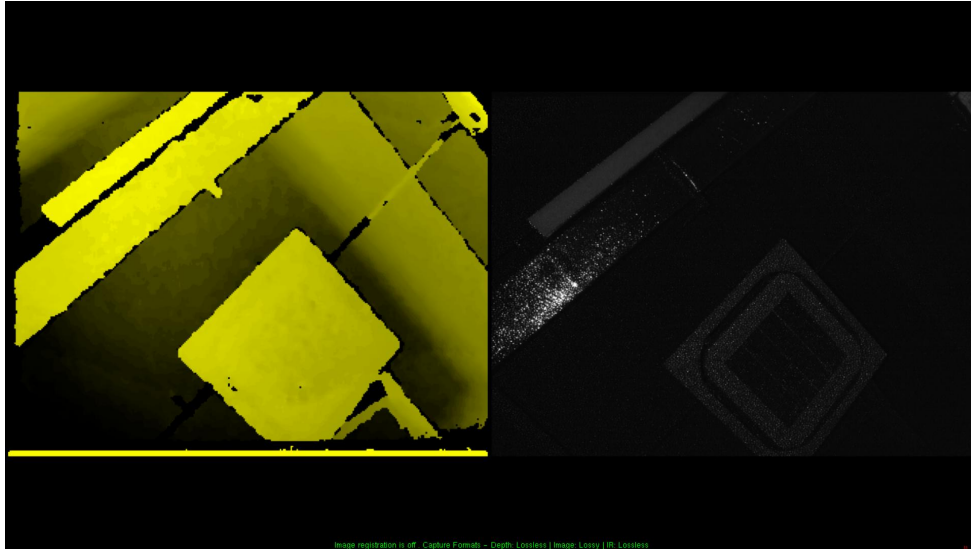


Right click mouse and follow the steps: Update driver -> Browse my computer for drivers -> Let me pick...on my computer -> orbbec -> Next -> ORBBEC Depth sensor-> Next -> yes

After the device manager is refreshed, you will see the following interface, which means the device can be used normally.



3. We can open NiViewer to view the depth map, file path: Win64-Release\tools\NiViewer:



4. And for Astra series cameras, you can view the basic information of the camera through PS1080Console.exe, file path: Win64-Release\tools\NiViewer:

```
D:\OBSDK\OpenNI\OpenNI_v2.3.0.85_20220615_1b09bbfd_windows_x64_x86_release\Win64-Release\tools\NiViewer\PS1080Console.exe
Device serialnumber: ? Firmware: V5.8.22-RD2513; SDK:Standard 2.3.0 (Build 88-beta28); Chip: 0x2bc50601
FPGA: 0xffff; System: 0xc; FWBaseLine: V5.8; Board: Unknown; ChipType: MX6000
>
```

5. If you want to upgrade the firmware, you need to use another firmware upgrade tool:

config	→ 1, set fw info	2024/8/2 15:11
firmware	→ 2, put the fw you want update	2024/8/2 15:11
OpenNI2		2024/8/2 15:11
Temp		2024/8/2 15:12
DepthUtils.lib		2018/8/24 18:10
DummyDevice.dll		2018/6/4 13:59
fw_upload.exe	→ 3, update	2018/8/28 17:17
FW_UPLOAD.res		2018/8/28 16:56
mfc140ud.dll		2016/7/21 23:05
mfc140ud.dll		2016/7/21 23:05
msvc140d.dll		2016/6/9 22:46
MWClosestPoint.dll		2018/6/4 13:59
OpenNI.ini		2018/8/28 17:11
OpenNI2.dll		2018/8/27 10:54
OpenNI2.lib		2018/8/27 10:54
RunMe.bat		2018/9/26 17:32
ucrtbase.dll		2015/6/10 19:10
ucrtbased.dll		2015/6/9 16:47
vcruntime140d.dll		2016/6/9 22:46
XnLib.lib		2018/8/24 18:10

Appendix: config file configuration instructions:

```

FWUpCfg.ini - Notepad
File Edit Format View Help
[Auto]
Enable = 1
CmpString = 2.5.13 → fw version
UseRefd = 0
FirmwareName = mx6000_astraplus2513.bin
                ↓
                fw name

```

Note: You can contact Orbbec technical personnel to obtain its firmware and upgrade tools.