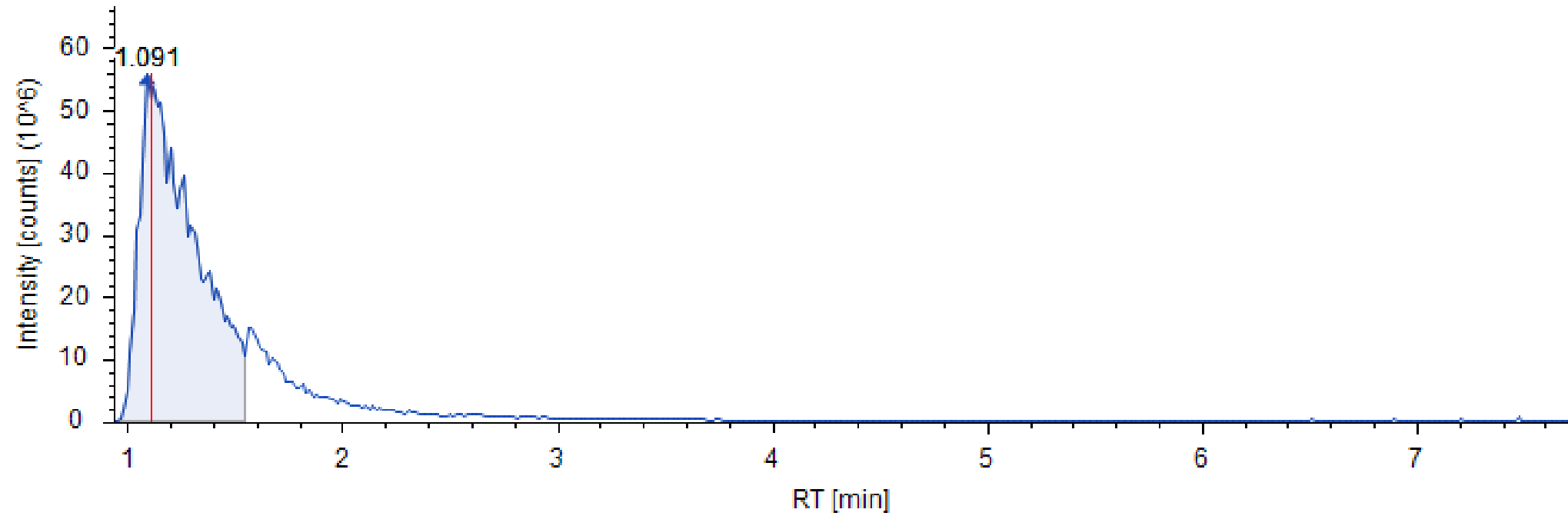


Integration by Xcalibur browser thermo QE plus

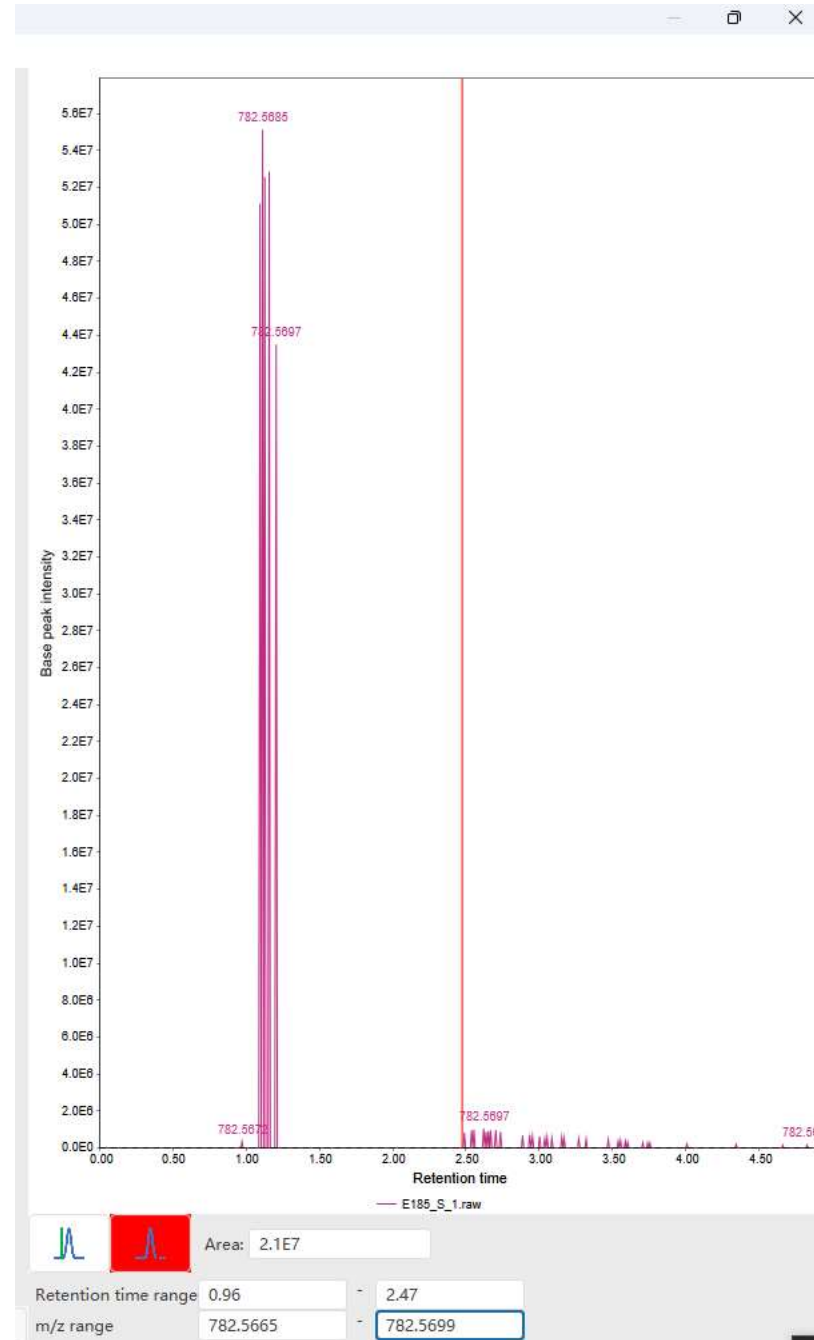
m/z=782.56878



Mzmine  
m/z=782.56878

Raw file=  
E185\_S\_1

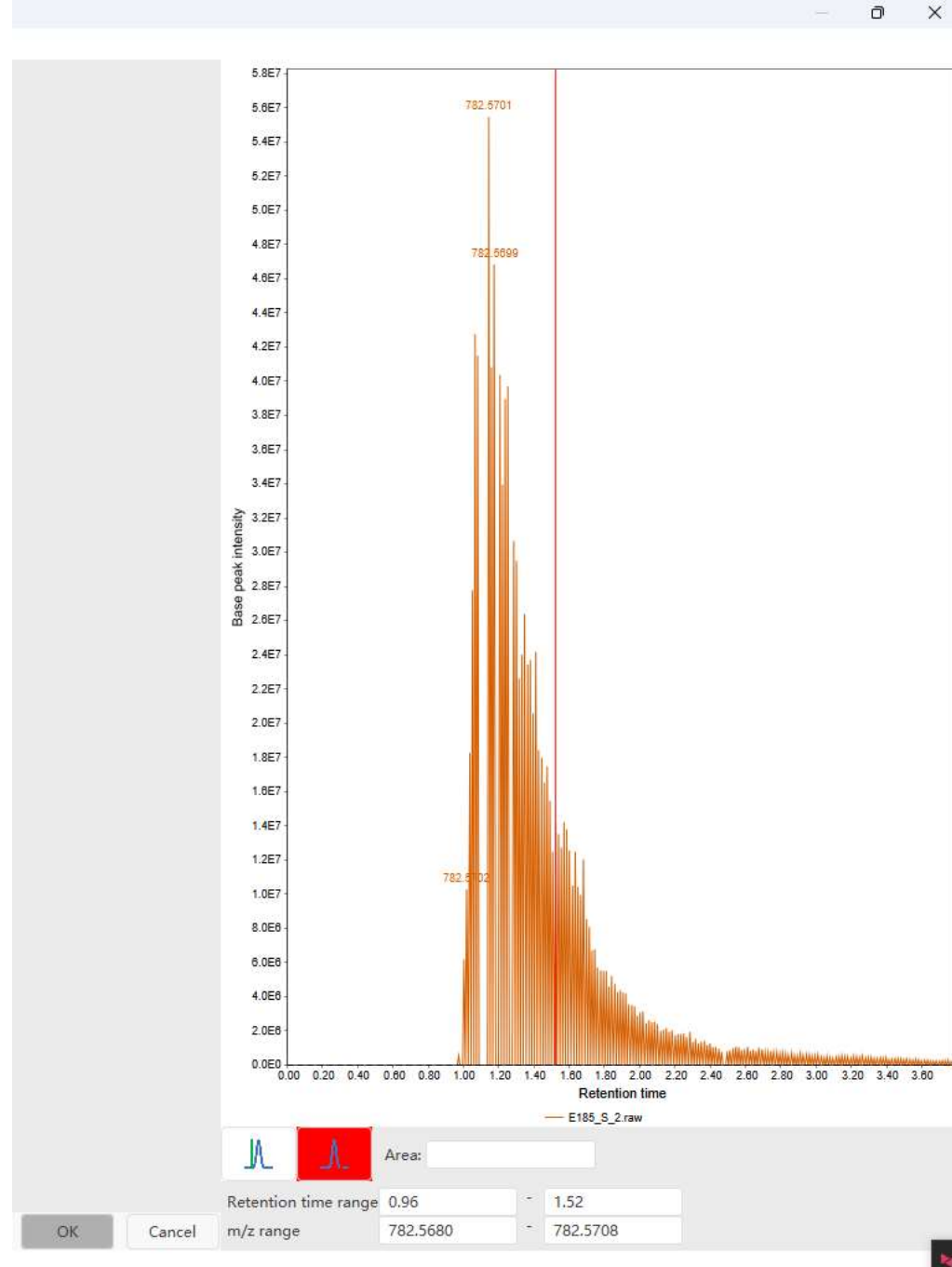
This peak area integration missed and  
lack a lot of ions or scans.



Mzmine  
m/z=782.56878

Raw file=  
E185\_S\_2

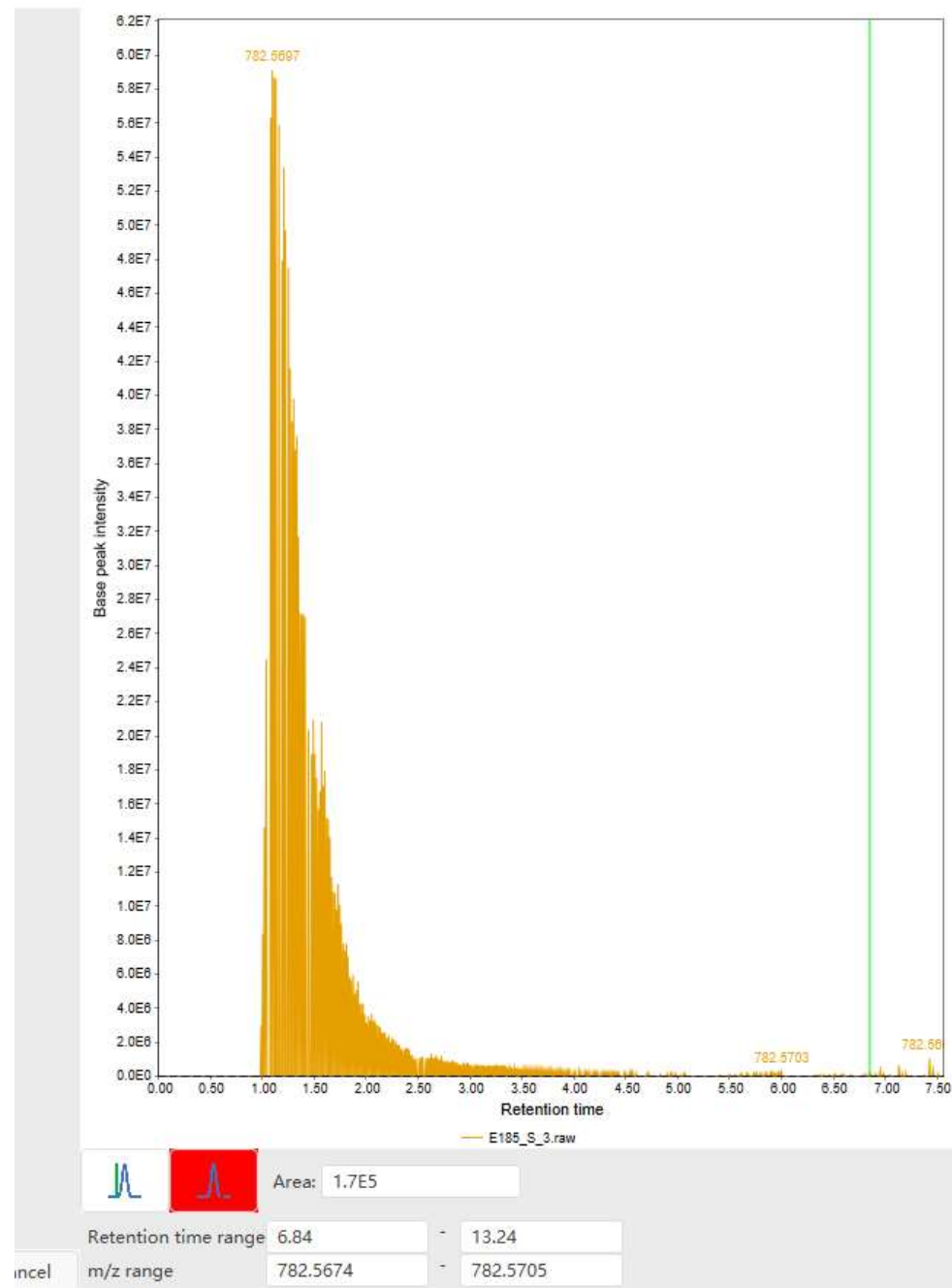
This peak area integration  
missed and lack  
some ions or scans



Mzmine  
m/z=782.56878

Raw file=  
E185\_S\_3

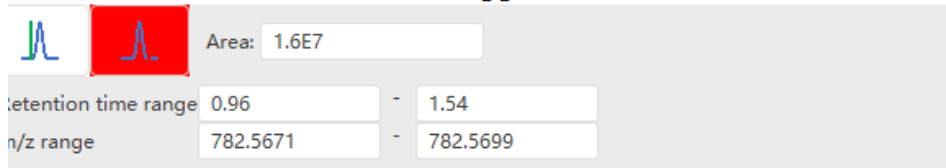
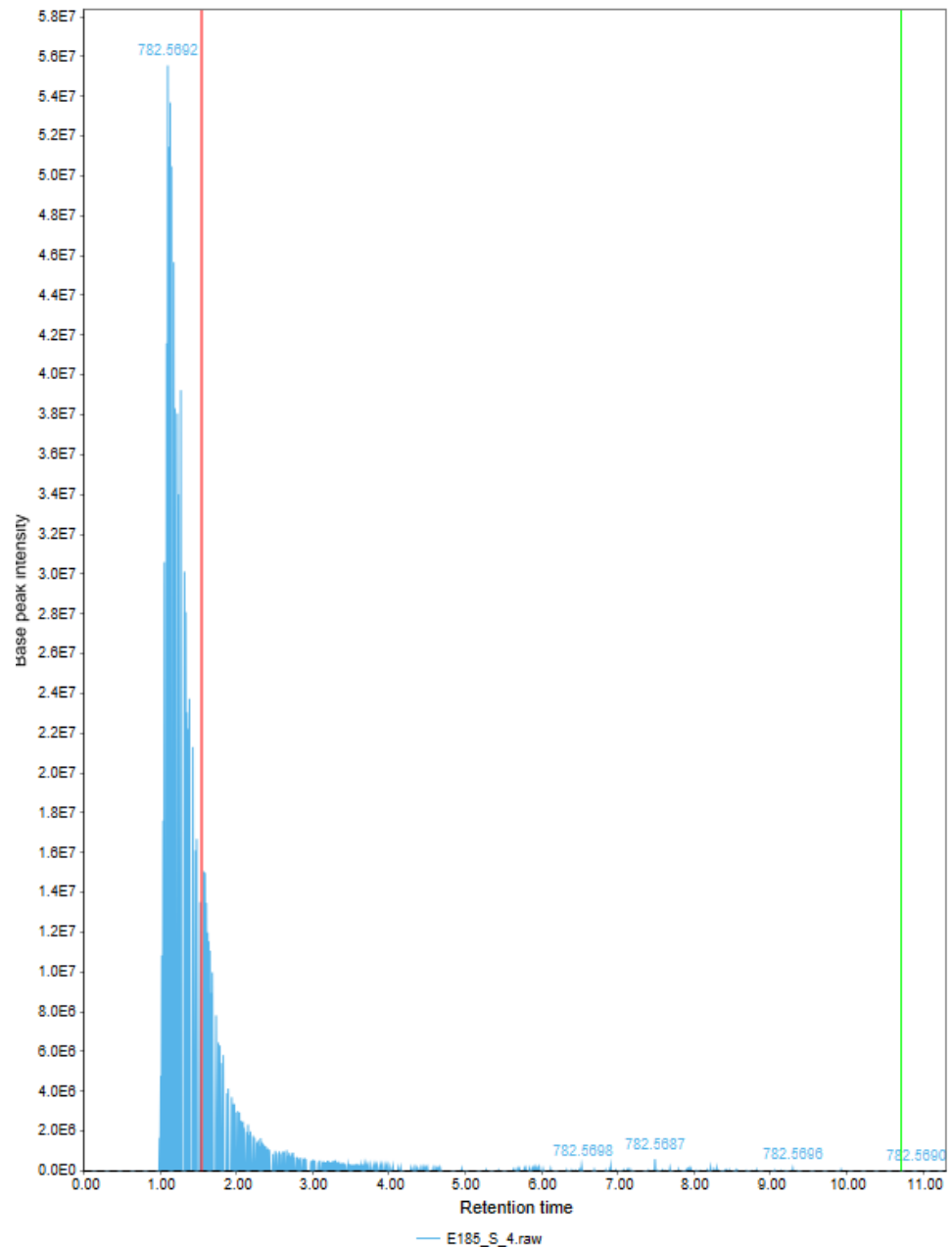
This peak area integration  
Looks good and fine.



Mzmine  
m/z=782.56878

Raw file=  
E185\_S\_4

This peak area integration  
Looks good and fine.



Mzmine  
m/z=782.56878

Raw file=  
E185\_S\_5

This peak area integration  
Looks good and fine

