

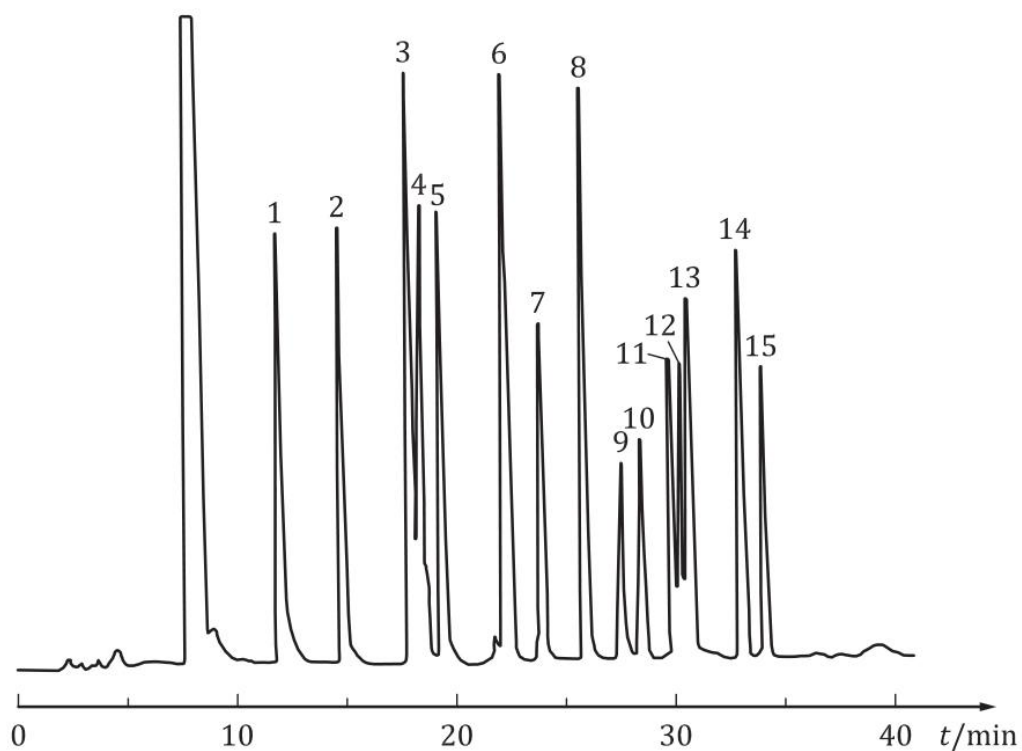
Save New Defaults and Save Time Printing to PDF

Don't select the same setting over and over again when printing to PDF. Save your setting once as the default setting. From the **Start** menu, select the **Control Panel**, and click **Printers and Faxes**. In the **Printers and Faxes** screen, right-click **MapInfo PDF Printer** and select **Printing Preferences**. Make your favorite setting and click **OK** to apply it as a default when you print to PDF. As an example, turn on **Enable Postscript Simulation** in the MapInfo PDF printer.

Embedding MapInfo Pro Graphics Tip

When you embed a MapInfo map in another application (such as Word or PowerPoint), click outside the map before you use the **Print** or **Print Preview** commands. This allows the container application to take over previewing or printing properly. This is particularly true if you have just made changes to the map you are printing.

<i>Embedding MapInfo Pro Graphics Tip</i>	Printing Preferences
Print Preview	<i>MapInfo Pro Graphics</i>



$$x = \frac{-b \pm \sqrt{b^2 - 4ac}}{2a}$$

1. This allows the container application to take over previewing.
2. This is particularly true if you have just made changes to the map.
3. This allows the container application to take over printing properly.
4. This is particularly true if you have just made changes to the map you are printing.