

MILITARY USE ONLY

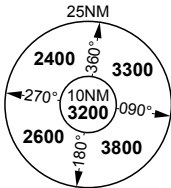
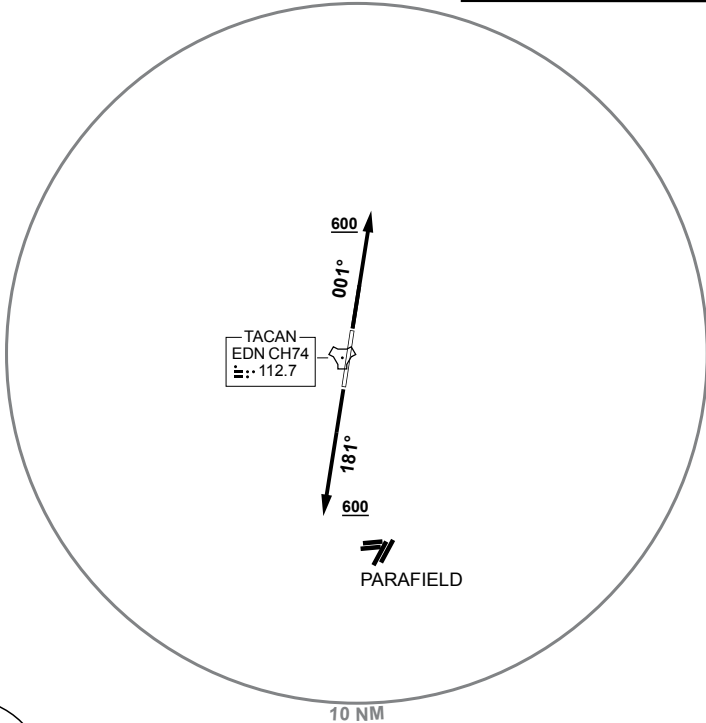
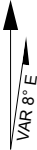
SID (RADAR) ALL RWYS  
**EDINBURGH (YPED)**

PANS-OPS, WGS 84

ATIS <b>126.25 316.3</b>	AWIS (AH) <b>316.3</b>	SMC /ACD <b>134.1</b>	TWR <b>118.3 257.8</b>	APP (AD) <b>128.6 306.3</b>	CTAF /AFRU <b>118.3</b>	FIA (AD) <b>130.45</b>	ELEVATIONS IN FEET AMSL BEARINGS ARE MAGNETIC
-----------------------------	---------------------------	--------------------------	---------------------------	--------------------------------	----------------------------	---------------------------	--------------------------------------------------

<b>ELEV 67</b>	
TLV FL110	TA 10000

**COMMUNICATIONS FAILURE:** SQUAWK 7600, MAINTAIN LAST ASSIGNED VECTOR FOR TWO MINUTES; AND **CLIMB IF NECESSARY TO MINIMUM SAFE ALTITUDE** TO MAINTAIN TERRAIN CLEARANCE; THEN PROCEED IN ACCORDANCE WITH THE LATEST ATC ROUTE CLEARANCE ACKNOWLEDGED



MSA - EDN TACAN

**DEPARTURE ROUTE DESCRIPTION**

**EDINBURGH FOUR**

**RWY 18**

GRAD 3.6% TO 3500FT THEN 3.3%, TRACK 181°, AT 600FT BUT NOT BEFORE DER, TURN TO ASSIGNED HEADING OR TRACK. CAUTION: PARAFIELD CTR 3NM SOUTH OF AD

**RWY 36**

GRAD 3.3%, TRACK 001°, AT 600FT BUT NOT BEFORE DER, TURN TO ASSIGNED HEADING OR TRACK

CHANGES: TACAN CH/FREQ

S34 42.15 E138 37.25

**23 MAR 23**

AIS-AF  
 MILITARY USE ONLY

**EDINBURGH (YPED)**  
 SID (RADAR) ALL RWYS