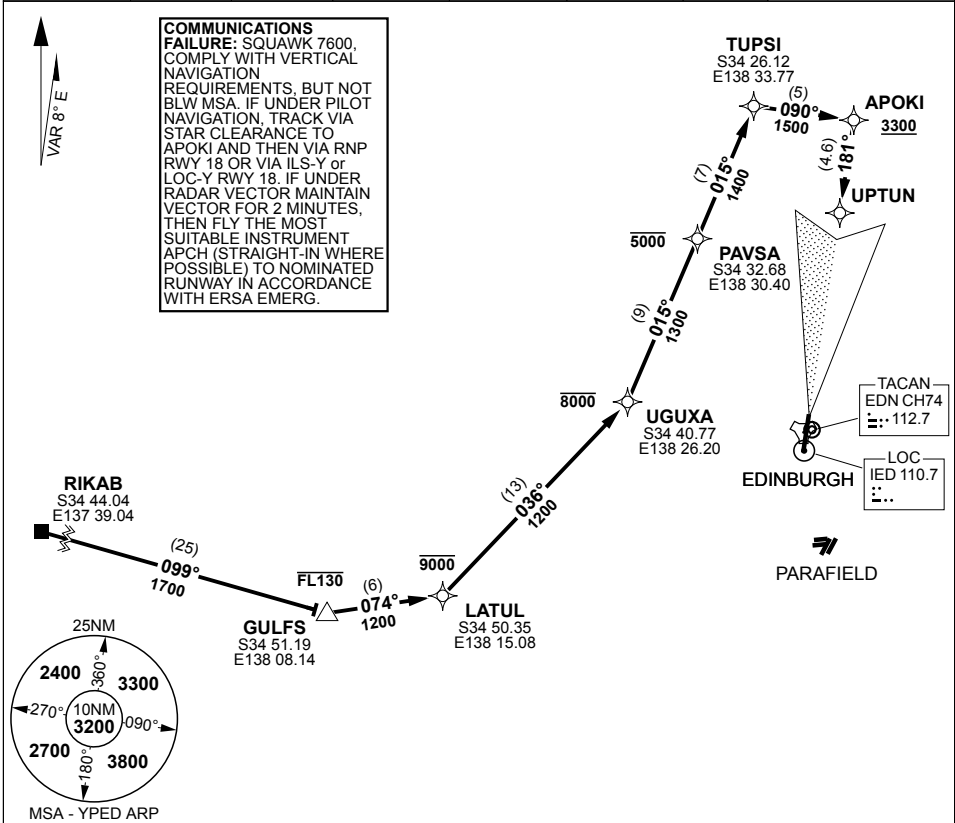


# STAR RIKAB ONE ECHO (RNAV) EDINBURGH (YPED)

PANS-OPS, WGS 84

**MILITARY USE ONLY**

ATIS <b>126.25 316.3</b>	AWIS (AH) <b>316.3</b>	SMC /ACD <b>134.1</b>	TWR <b>118.3 257.8</b>	APP (AD) <b>128.6 306.3</b>	CTAF /AFRU <b>118.3</b>	FIA (AD) <b>130.45</b>	ELEVATIONS IN FEET AMSL BEARINGS ARE MAGNETIC
-----------------------------	---------------------------	--------------------------	---------------------------	--------------------------------	----------------------------	---------------------------	--------------------------------------------------



### ARRIVAL ROUTE DESCRIPTION

**RIKAB ONE ECHO (RNAV)**

FM RIKAB TRACK 099° TO GULFS **CROSS** GULFS AT or BLW FL130

TRACK 074° TO LATUL **CROSS** LATUL AT or BLW 9000FT

TRACK 036° TO UGUXA **CROSS** UGUXA AT or BLW 8000FT

TRACK 015° TO PAVSA **CROSS** PAVSA AT or BLW 5000FT

TRACK 015° TO TUPSI

TRACK 090° TO APOKI

**RWY 18**

TRACK VIA RNP RWY 18 (**CROSS** APOKI AT or ABV 3300FT) or TRACK 181° TO UPTUN THEN VIA ILS-Y or LOC-Y RWY 18

**RWY 36**

TRACK VIA RNP RWY 18 (**CROSS** APOKI AT or ABV 3300FT) AND MAKE CIRCLING APCH FOR RWY 36 or TRACK 181° TO UPTUN THEN VIA ILS-Y or LOC-Y RWY 18 AND MAKE CIRCLING APCH FOR RWY 36

CHANGES: EDITORIAL, TAC CH/FREQ

S34 42.15 E138 37.25

**23 MAR 23**

**AIS-AF: MILITARY USE ONLY**

**EDINBURGH (YPED)  
STAR RIKAB ONE ECHO (RNAV)**