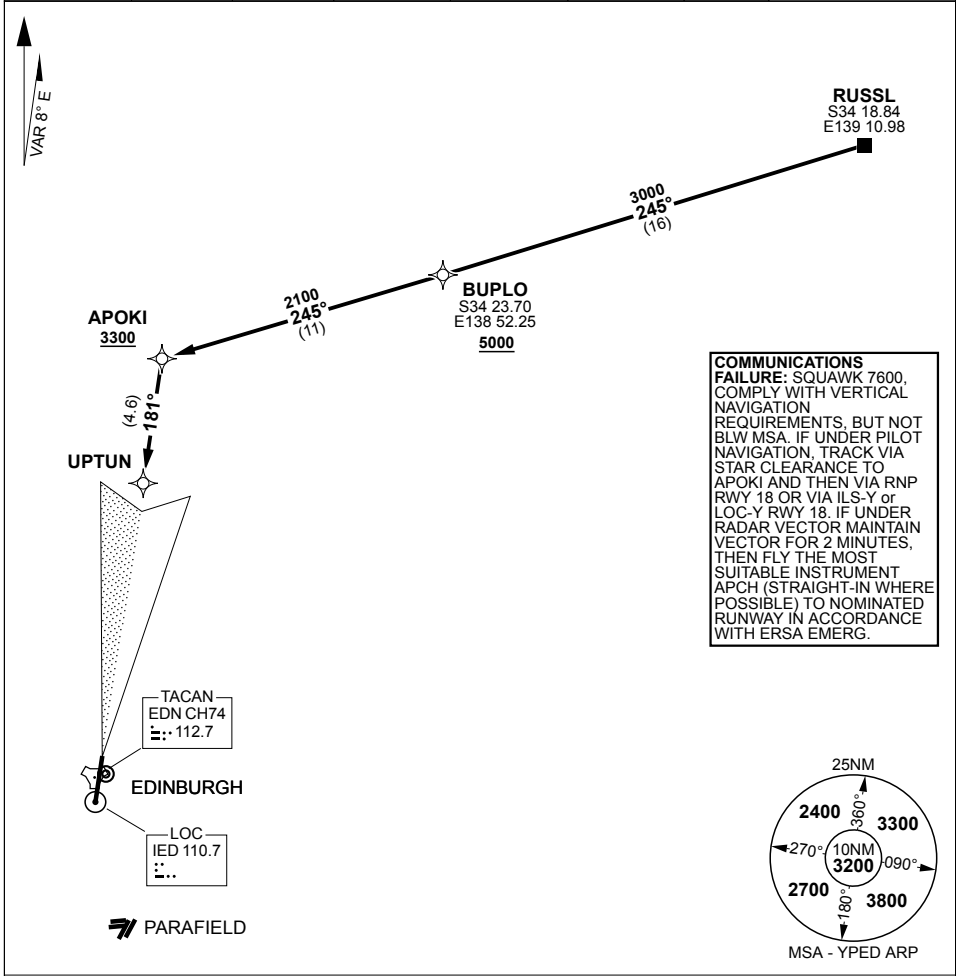


STAR RUSSL ONE ECHO (RNAV) EDINBURGH (YPED)

PANS-OPS, WGS 84

MILITARY USE ONLY

ATIS 126.25 316.3	AWIS (AH) 316.3	SMC /ACD 134.1	TWR 118.3 257.8	APP (AD) 128.6 306.3	CTAF /AFRU 118.3	FIA (AD) 130.45	ELEVATIONS IN FEET AMSL BEARINGS ARE MAGNETIC
-----------------------------	---------------------------	--------------------------	---------------------------	--------------------------------	----------------------------	---------------------------	--



ARRIVAL ROUTE DESCRIPTION

RUSSL ONE ECHO (RNAV)

FM RUSSL TRACK 245° TO BUPLO **CROSS** BUPLO AT or ABV 5000FT, TRACK 245° TO APOKI

RWY 18

TRACK VIA RNP RWY 18 (**CROSS** APOKI AT or ABV 3300FT) or TRACK 181° TO UPTUN THEN VIA ILS-Y or LOC-Y RWY 18

RWY 36

TRACK VIA RNP RWY 18 (**CROSS** APOKI AT or ABV 3300FT) AND MAKE CIRCLING APCH FOR RWY 36 or TRACK 181° TO UPTUN THEN VIA ILS-Y or LOC-Y RWY 18 AND MAKE CIRCLING APCH FOR RWY 36

CHANGES: EDITORIAL, TAC CH/FREQ

S34 42.15 E138 37.25

23 MAR 23

AIS-AF: MILITARY USE ONLY

EDINBURGH (YPED)
STAR RUSSL ONE ECHO (RNAV)