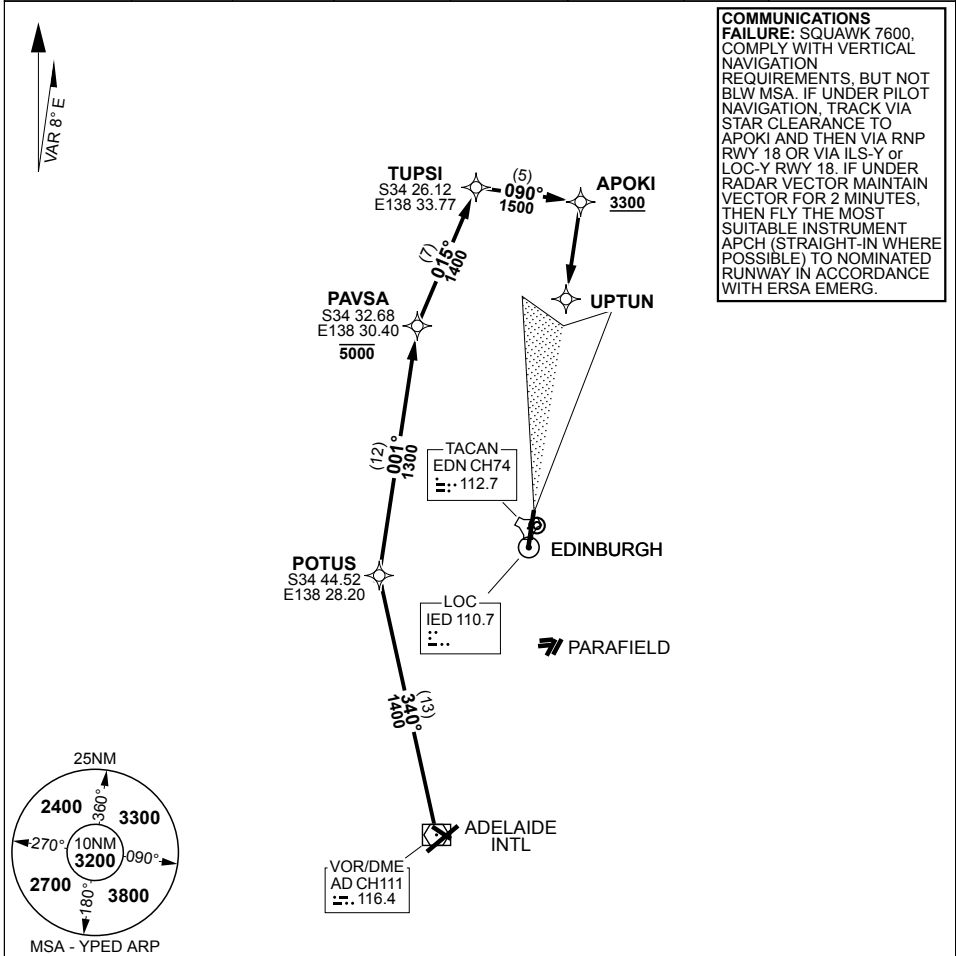


STAR ADELAIDE ONE ECHO (RNAV) EDINBURGH (YPED)

PANS-OPS, WGS 84

MILITARY USE ONLY

| ATIS | AWIS (AH) | SMC /ADC | TWR | APP (AD) | CTAF /AFRU | FIA (AD) | ELEVATIONS IN FEET AMSL BEARINGS ARE MAGNETIC |
|---------------------|--------------|--------------|--------------------|--------------------|--------------|---------------|--|
| 126.25 316.3 | 316.3 | 134.1 | 118.3 257.8 | 128.6 306.3 | 118.3 | 130.45 | |



COMMUNICATIONS FAILURE: SQUAWK 7600, COMPLY WITH VERTICAL NAVIGATION REQUIREMENTS, BUT NOT BLW MSA. IF UNDER PILOT NAVIGATION, TRACK VIA STAR CLEARANCE TO APOKI AND THEN VIA RNP RWY 18 OR VIA ILS-Y or LOC-Y RWY 18. IF UNDER RADAR VECTOR MAINTAIN VECTOR FOR 2 MINUTES, THEN FLY THE MOST SUITABLE INSTRUMENT APCH (STRAIGHT-IN WHERE POSSIBLE) TO NOMINATED RUNWAY IN ACCORDANCE WITH ERS A EMERG.

ARRIVAL ROUTE DESCRIPTION

ADELAIDE ONE ECHO (RNAV)

FM AD TRACK 340° TO POTUS, TRACK 001° TO PAVSA **CROSS** PAVSA AT or BLW 5000FT, TRACK 015° TO TUPSI, TRACK 090° TO APOKI

RWY 18

TRACK VIA RNP RWY 18 (**CROSS** APOKI AT or ABV 3300FT) or TRACK 181° TO UPTUN THEN VIA ILS-Y or LOC-Y RWY 18

RWY 36

TRACK VIA RNP RWY 18 (**CROSS** APOKI AT or ABV 3300FT) AND MAKE CIRCLING APCH FOR RWY 36 or TRACK 181° TO UPTUN THEN VIA ILS-Y or LOC-Y RWY 18 AND MAKE CIRCLING APCH FOR RWY 36

CHANGES: TAC CH/FREQ

S34 42.15 E138 37.25

23 MAR 23

EDINBURGH (YPED)
STAR ADELAIDE ONE ECHO (RNAV)

AIS-AF: MILITARY USE ONLY