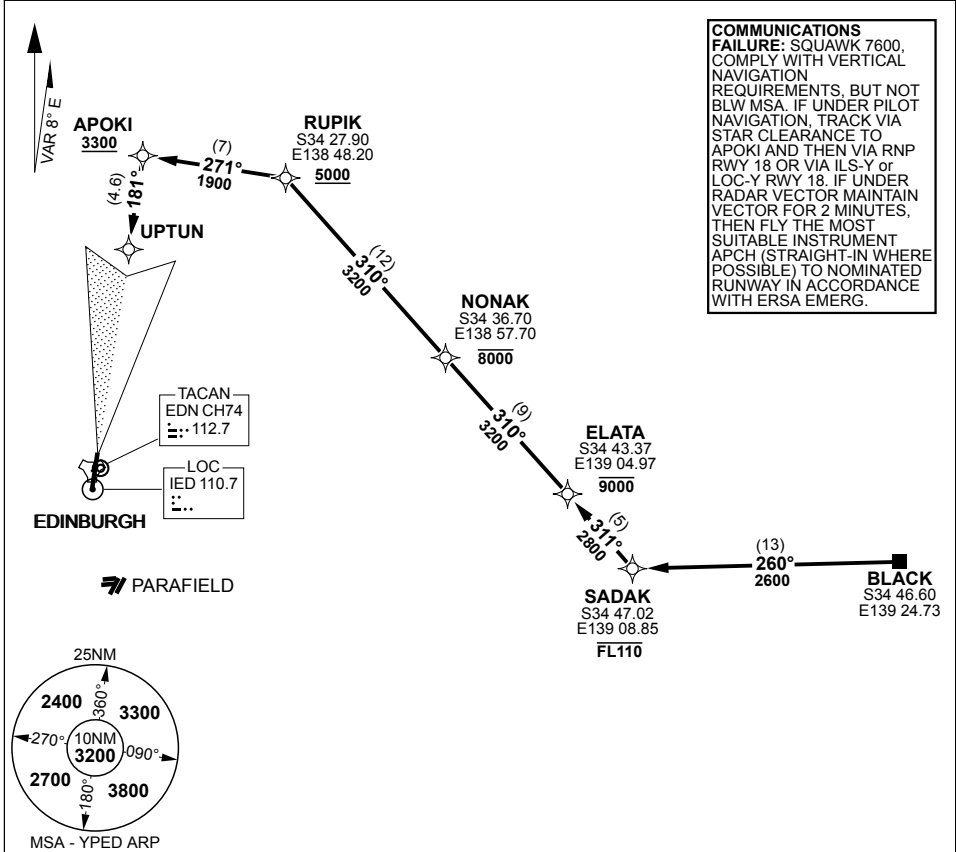


STAR BLACK ONE ECHO (RNAV) EDINBURGH (YPED)

PANS-OPS, WGS 84

MILITARY USE ONLY

ATIS	AWIS (AH)	SMC /ADC	TWR	APP (AD)	CTAF /AFRU	FIA (AD)	ELEVATIONS IN FEET AMSL BEARINGS ARE MAGNETIC
126.25 316.3	316.3	134.1	118.3 257.8	128.6 306.3	118.3	130.45	



ARRIVAL ROUTE DESCRIPTION

BLACK ONE ECHO (RNAV)

FM BLACK TRACK 260° TO SADAK **CROSS** SADAK AT or BLW FL110

TRACK 311° TO ELATA **CROSS** ELATA AT or BLW 9000FT

TRACK 310° TO NONAK **CROSS** NONAK AT or BLW 8000FT

TRACK 310° TO RUIPIK **CROSS** RUIPIK AT or ABV 5000FT

TRACK 271° TO APOKI

RWY 18

TRACK VIA RNP RWY 18 (**CROSS** APOKI AT or ABV 3300FT) or TRACK 181° TO UPTUN THEN VIA ILS-Y or LOC-Y RWY 18

RWY 36

TRACK VIA RNP RWY 18 (**CROSS** APOKI AT or ABV 3300FT) AND MAKE CIRCLING APCH FOR RWY 36 or TRACK 181° TO UPTUN THEN VIA ILS-Y or LOC-Y RWY 18 AND MAKE CIRCLING APCH FOR RWY 36

CHANGES: EDITORIAL, TAC CH/FREQ S34 42.15 E138 37.25

23 MAR 23 AIS-AF: **MILITARY USE ONLY**

EDINBURGH (YPED)
STAR BLACK ONE ECHO (RNAV)