

APCH CRS	RWY LDG	8399
181°	THR ELEV	61
	AD ELEV	67

PANS-OPS, WGS-84

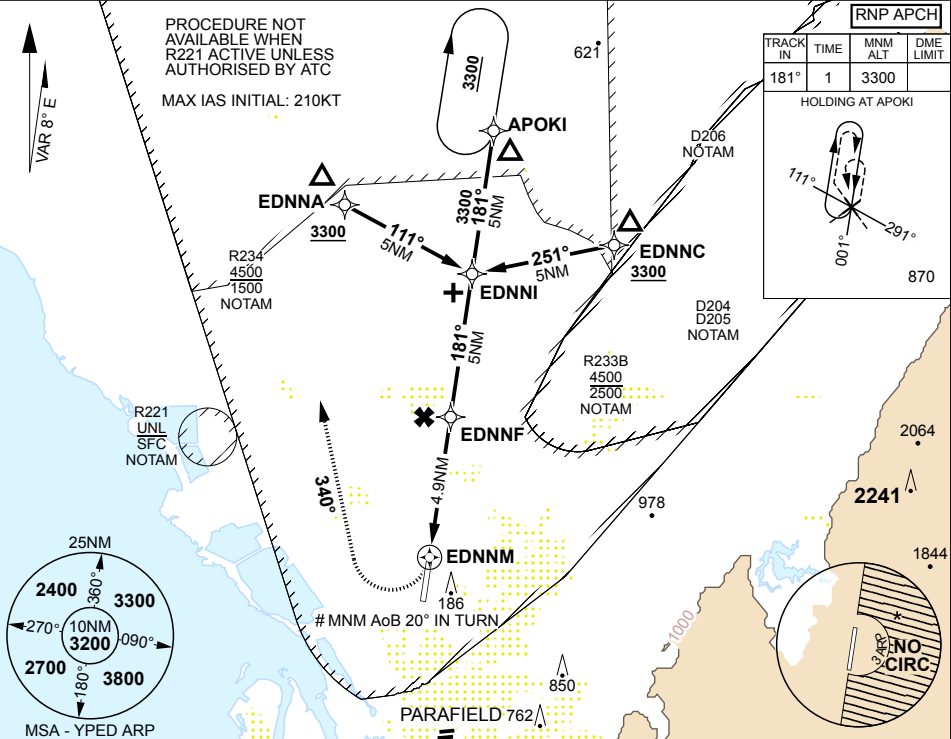
RNP RWY 18 EDINBURGH (YPED)

- NO CIRCLING IN SECTOR EAST OF RWY 18/36 BEYOND 3NM FM ARP.
- ENSURE AN AWY CLR TO RE-ENTER CONTROLLED AIRSPACE IS REC PRIOR TO COMMENCING AN INSTR APCH INTO THE EDN CTA IN MARGINAL COND OR WHEN A MISSED APCH IS INTENDED FLW A PRACTICE APCH.
- MISSED APCH TOLERANCE NOT CONTAINED WITHIN YPED CTR/CTAF.

ALSF-1

MISSED APPROACH:
TURN RIGHT. MAX IAS IN TURN:
210KT. MNM AOB 20° IN TURN.
TRACK 340°. CLIMB TO 3300FT OR
AS DIRECTED BY ATC.

ATIS	AWIS (AH)	SMC /ACD	TWR	APP (AD)	CTAF /AFRU	FIA (AD)	ELEVATIONS IN FEET AMSL BEARINGS ARE MAGNETIC
126.25 316.3	316.3	134.1	118.3 257.8	128.6 306.3	118.3	130.45	



NM TO NEXT WPT	EDNNM	1.5	2	3	4	EDNNF	1	2	3	4	EDNNI		
ALTITUDE		620	780	1100	1420	1700	2020	2340	2660	2980	3300		

3300 Turn MAX 210KTS
crs 340°

MAX IAS INITIAL: 210KT

EDNNI 1700

EDNNF 1700

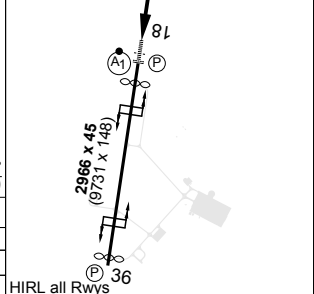
EDNNM MAPT

MDA 1000

3.00° TCH 50

.1 4.9 NM 5 NM

TLV FL110	TA 10000
THR ELEV 61	TDZE 61



CATEGORY	A	B	C	D
RNAV MDA	620	553	3100m	(VIS -2500 WITH ACTUAL QNH)
CIRCLING	800 733 2000m	800 733 2400m	890 823 4000m	890 823 5000m