

MILITARY USE ONLY

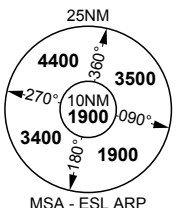
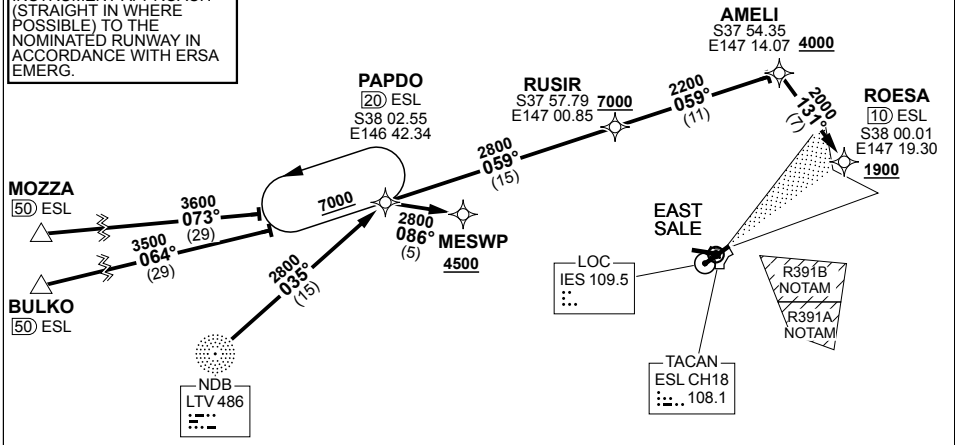
STAR PAPDO ONE
EAST SALE (YMES)

PANS-OPS, WGS 84

ATIS 125.4 350	AWIS (AH) 125.4	ACD 133.6 134.1	SMC 127.25	TWR 118.3 257.8	APP 123.3 340.2	ACC 135.8	CTAF/AFRU 118.3	FIA (ML) 124.0	ELEVATIONS IN FEET AMSL BEARINGS ARE MAGNETIC
-------------------	--------------------	-----------------------	---------------	--------------------	-----------------------	--------------	--------------------	-------------------	--

COMMUNICATIONS
FAILURE: SQUAWK 7600, COMPLY WITH VERTICAL NAVIGATION REQUIREMENTS, BUT NOT BELOW MSA. IF UNDER PILOT NAVIGATION: RWY 22: TRACK VIA STAR CLEARANCE TO ROESA AND FOLLOW ILS-Z or LOC-Z RWY 22 or ILS-X or LOC-X RWY 22. RWY 09: TRACK VIA STAR CLEARANCE TO MESWP AND FOLLOW RNP RWY 09. IF UNDER RADAR VECTOR MAINTAIN VECTOR FOR 2 MINUTES, THEN FLY THE MOST SUITABLE INSTRUMENT APPROACH (STRAIGHT IN WHERE POSSIBLE) TO THE NOMINATED RUNWAY IN ACCORDANCE WITH ERSA EMERG.

GNSS PERMITTED IN LIEU OF DME REFERENCE
WAYPOINT ESL TACAN



NOTE IN IMC NON FMS EQPT ACFT MAY REQUEST RADAR VECTORS TO FNA COURSE

ARRIVAL ROUTE DESCRIPTION

PAPDO ONE (RNAV)

CROSS PAPDO AT OR ABV 7000FT

RWY 09

FROM PAPDO TRACK 086° TO MESWP, THEN RNP RWY 09

RWY 22

FROM PAPDO TRACK 059° TO RUSIR, THEN TRACK 059° TO AMELI, TURN RIGHT TRACK 131° TO ROESA, THEN ILS-Z or LOC-Z RWY 22 or ILS-X or LOC-X RWY 22

CHANGES: EDITORIAL

S38 05.94 E147 08.97

23 MAR 23

AIS-AF
MILITARY USE ONLY

EAST SALE (YMES)
STAR PAPDO ONE