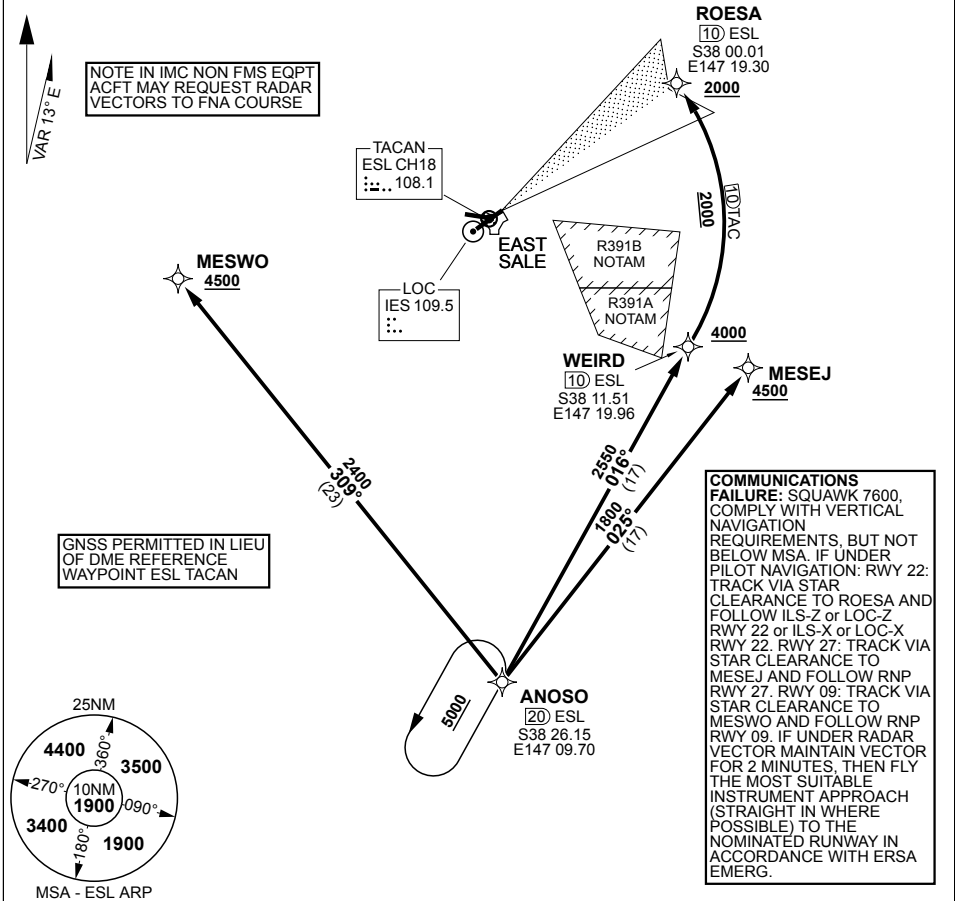


MILITARY USE ONLY

STAR ANOSO ONE
EAST SALE (YMES)

PANS-OPS, WGS 84

ATIS 125.4 350	AWIS (AH) 125.4	ACD 133.6 134.1	SMC 127.25	TWR 118.3 257.8	APP 123.3 340.2	ACC 135.8	CTAF/AFRU 118.3	FIA (ML) 124.0	ELEVATIONS IN FEET AMSL BEARINGS ARE MAGNETIC
-------------------	--------------------	-----------------------	---------------	--------------------	-----------------------	--------------	--------------------	-------------------	--



ARRIVAL ROUTE DESCRIPTION

ANOSO ONE (RNAV)

CROSS ANOSO AT OR ABOVE 5000FT

RWY 09

FROM ANOSO TRACK 309° TO MESWO, THEN RNP RWY 09

RWY 27

FROM ANOSO TRACK 025° TO MESEJ, THEN RNP RWY 27

RWY 22

FROM ANOSO TRACK 016° TO WEIRD, THEN VIA 10TAC ARC TO ROESA, THEN ILS-Z or LOC-Z RWY 22 or ILS-X or LOC-X RWY 22

CHANGES: EDITORIAL

S38 05.94 E147 08.97

23 MAR 23

AIS-AF
MILITARY USE ONLY

EAST SALE (YMES)
STAR ANOSO ONE