



Low Level Design (LLD)

Thyroid Disease Detection

Table of Contents

1 Introduction	2
1.1 What is low-level document?.....	2
1.2 Scope.....	2
2. Architecture	3
3. Architecture Design	4
3.1 Data Description.....	4
3.2 Export Data from DB to CSV for training.....	4
3.3 Data Preprocessing.....	4
3.4 Data Clustering.....	4
3.5 Get best model of each cluster.....	5
3.6 Hyperparameter Tuning.....	5
3.7 Model saving.....	5
3.8 Cloud setup.....	5
3.9 Push App to cloud.....	5
3.10 Data from client side for prediction.....	5
3.11 Export prediction to CSV.....	6
3.12 User Interface.....	6
4 Unit test cases	6

1. Introduction

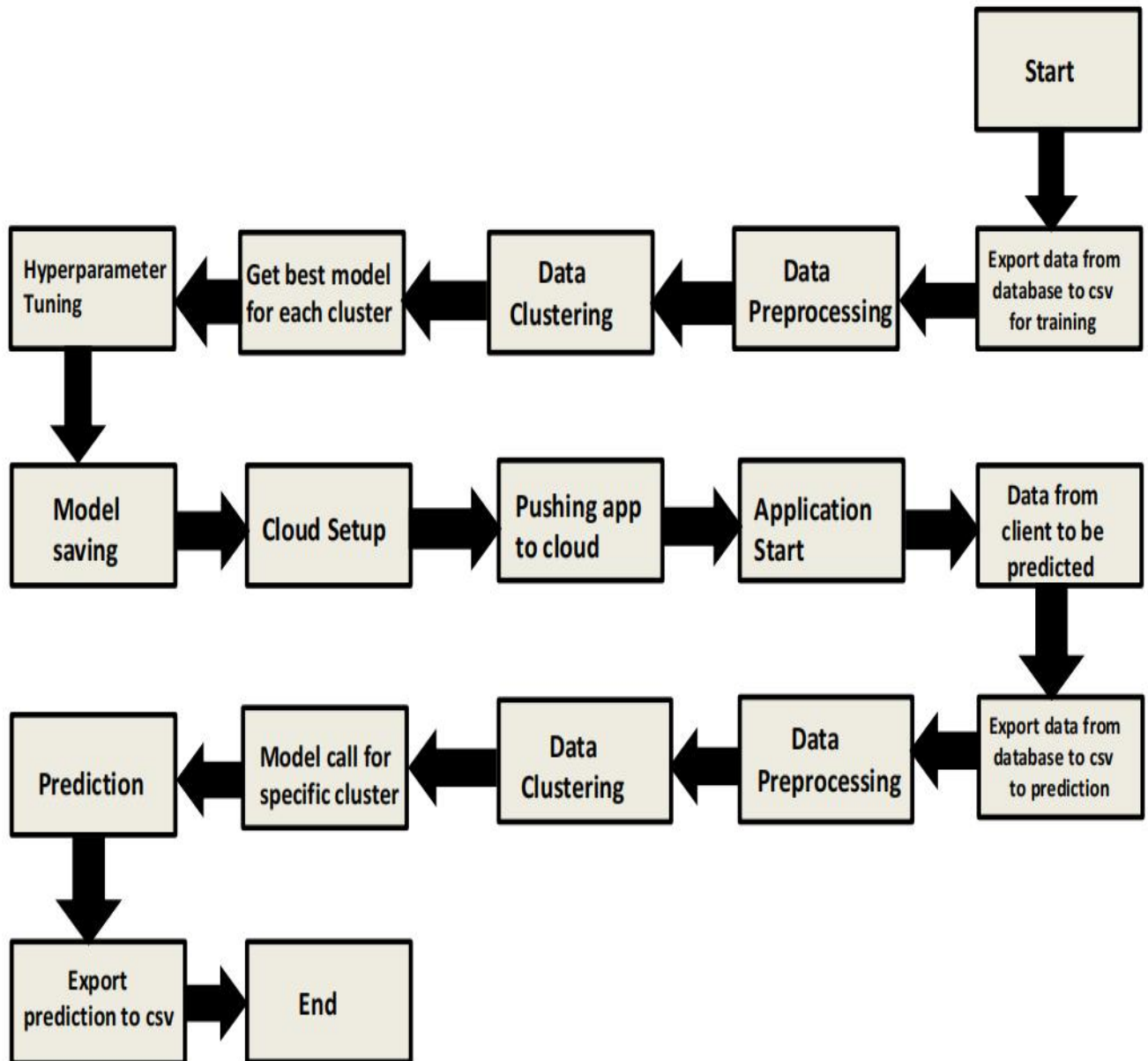
1.1 What is Low-Level design document?

The goal of LLD or a low-level design document is to give the internal logical design of the actual program code for Thyroid Disease Detection. LLD describes the class diagrams with the methods and relations between classes and program specs. It describes the modules so that the programmer can directly code the program from the document.

1.2 Scope

Low-level design is a component-level design process that follows a step-by-step refinement process. This process can be used for designing data structures, required software architecture, source code and ultimately, performance algorithms. Overall, the data organization may be defined during requirement analysis and then refined during data design work.

2. Architecture



3. Architecture Design

3.1 Data Description

We will be using Thyroid Disease Data Set present in UCI Machine Learning Repository. This Data set is satisfying our data requirement. Total 7200 instances present in different batches of data. Data is consists of categorical and numerical attributes.

3.2 Export Data from database to CSV for Training

All those batch file which after passing through data validation step get stored in Database. And here we will be exporting all those CSV files in a single CSV file for training purpose. For this we need to write a separate module.

3.3 Data Preprocessing

We will be exploring our data set here and do EDA if required and perform data preprocessing depending on the data set. We first explore our data set in Jupyter Notebook and decide what pre-processing and Validation we have to do such as imputation of null values, dropping some column, etc and then we have to write separate modules according to our analysis, so that we can implement that for training as well as prediction data.

3.4 Data Clustering

K-Means algorithm will be used to create clusters in the pre-processed data. The optimum number of clusters is selected by plotting the elbow plot. The idea behind clustering is to implement different algorithms to train data in different clusters. The K-means model is trained over pre-processed data and the model is saved for further use in prediction.

3.5 Get best model of each cluster

Here we will train various model on each cluster which we will obtain in Data Clustering step, and then will try to get best model for each cluster.

3.6 Hyperparameter Tuning

After selecting best model for each cluster, we will do hyperparameter tuning for each selected model, and try to increase performance of the models. And finally save model for each cluster

3.7 Model Saving

After performing hyperparameter tuning for models, we will save our models as per cluster number. so that we can use them for prediction purpose and according to cluster number we will call model for making prediction over client data.

3.8 Cloud Setup

Here we will do cloud setup for model deployment. Creating all required files needed for cloud deployment of app. Here we also create our flask app and user interface and integrate our model with flask app and UI

3.9 Push app to cloud

After doing cloud setup and checking app locally, we will push our app to cloud to start the application.

3.10 Data from client side for prediction purpose

Now our application on cloud is ready for doing prediction. The prediction data which we receive from client side will be exported from DB and further will do same data cleansing process as we have

done for training data using modules we will write for training data. Client data will also go along the same process of **Exporting data from DB, Data pre-processing, Data clustering** and according to each cluster number we will use our **saved model** for prediction on that particular cluster.

3.11 Export Prediction to CSV

Finally when we get all the prediction for client data, then our final task is to export prediction to csv file and hand over it to client.

3.12 User Interface

For batch or bulk prediction, UI which will take a CSV file from client and make bulk prediction at a single time and save those prediction in Predictions.csv file.