

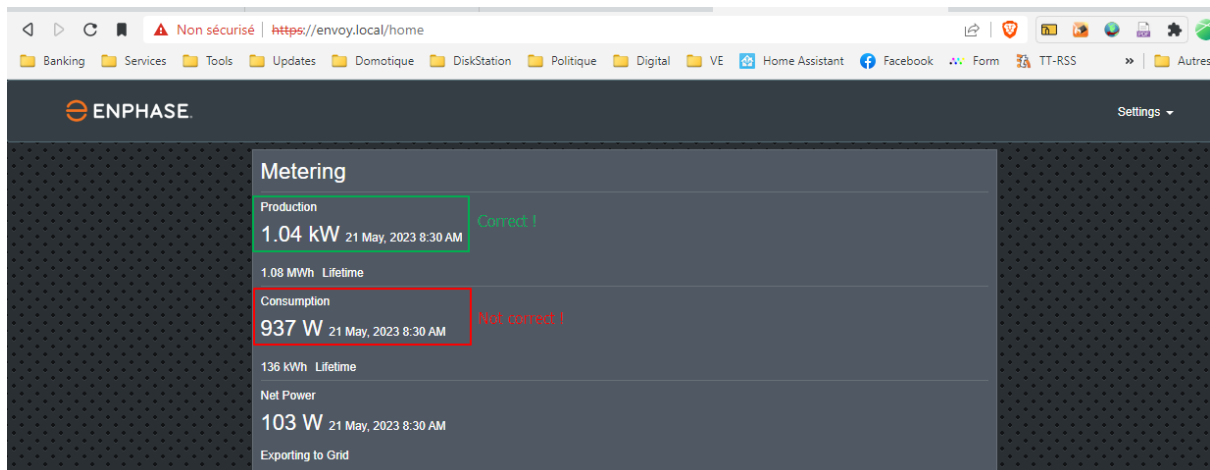
In Enlighten application (live status)

Production and Consumption values are **correct**:



Through web access or through Home Assistant Envoy integration

Production value is **correct**, but consumption value is **NOT** and doesn't correspond to that in the Enlighten application:

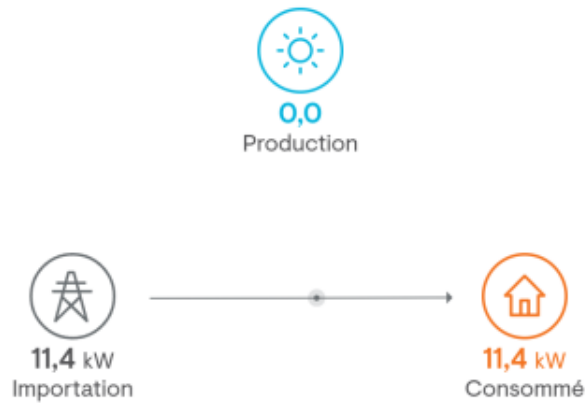


PS : System is configured with “load with solar production” setting (according to the positioning of the CT clamps)

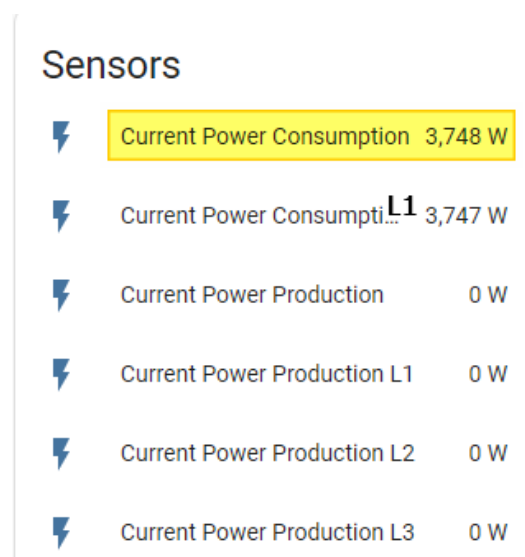
Test with no solar production

The test has been done while charging the EV at full load (11 kW (16A)).

The values from the Enlighten application (live status) are fully correct:



But the consumption value provided to the Home Assistant Envoy integration (= the one available in the local envoy.local web app) is completely wrong:



It is like the system is missing the phases L2 and L3 for the Power Consumption (there are not provided to the Home Assistant integration), so the total consumption value is only 1/3rd of what it should be.