

# Interactive Spatial Data Visualization

Exploring Two Different Options with Case Studies based on UK Crime Data

Jo-fai Chow, Hydroinformatics EngD Candidate, University of Exeter, UK

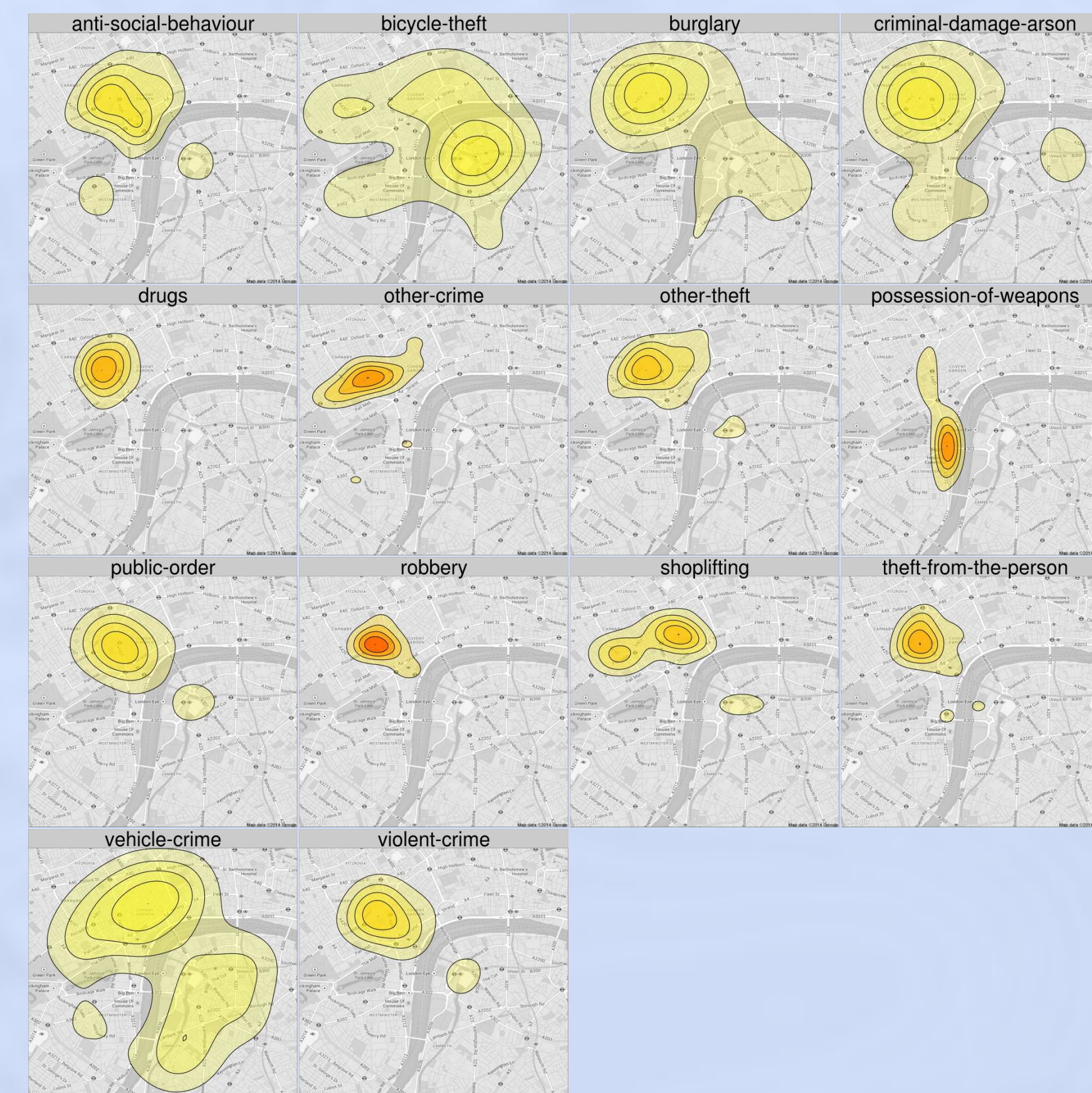
## CrimeMap (Web Application)

[http://bit.ly/bib\\_crimemap](http://bit.ly/bib_crimemap)

### Crime Hot Spots in Central London January 2014 – 2,913 Records



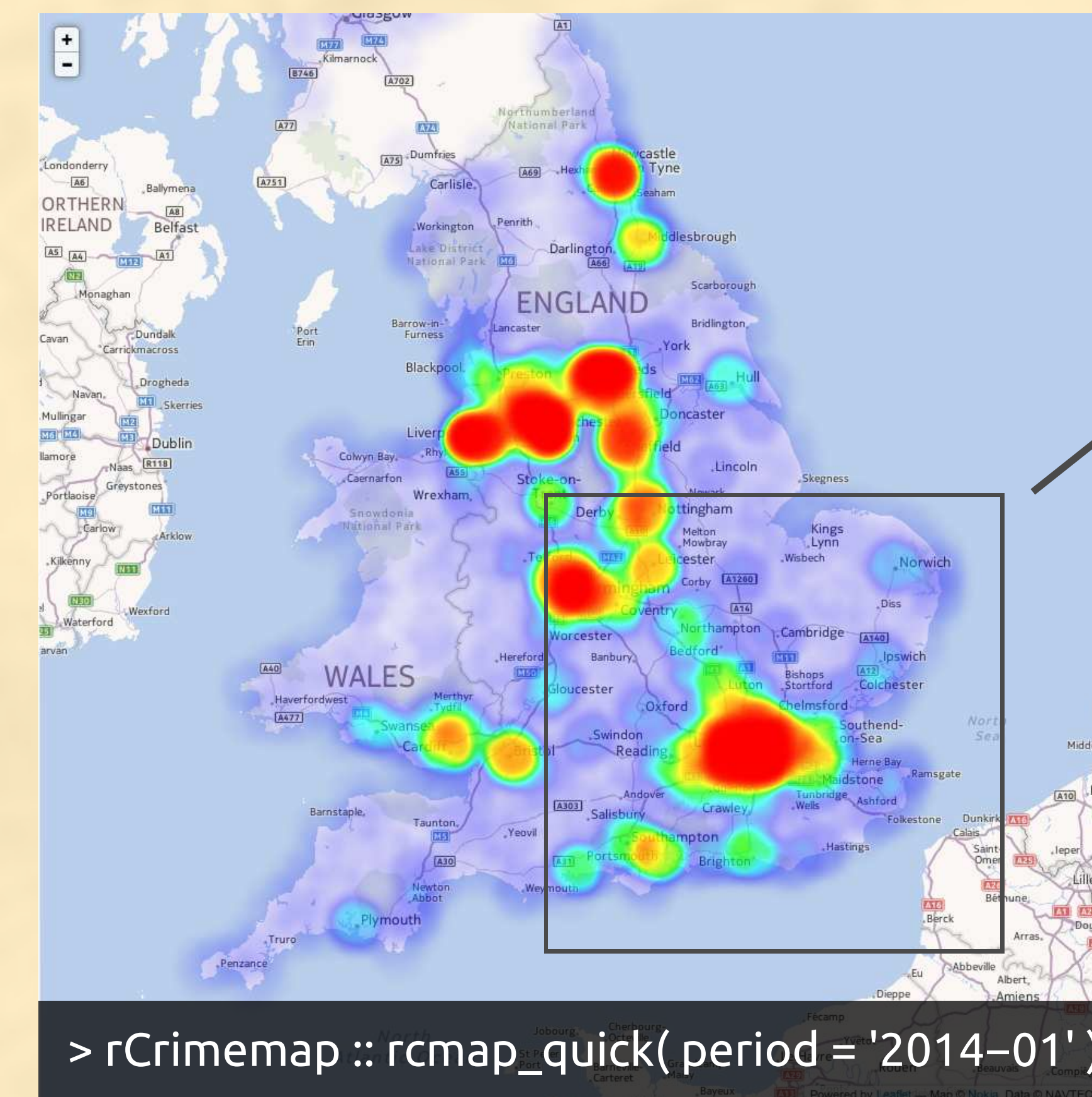
### Exploring Different Crime Categories Faceting with ggplot2



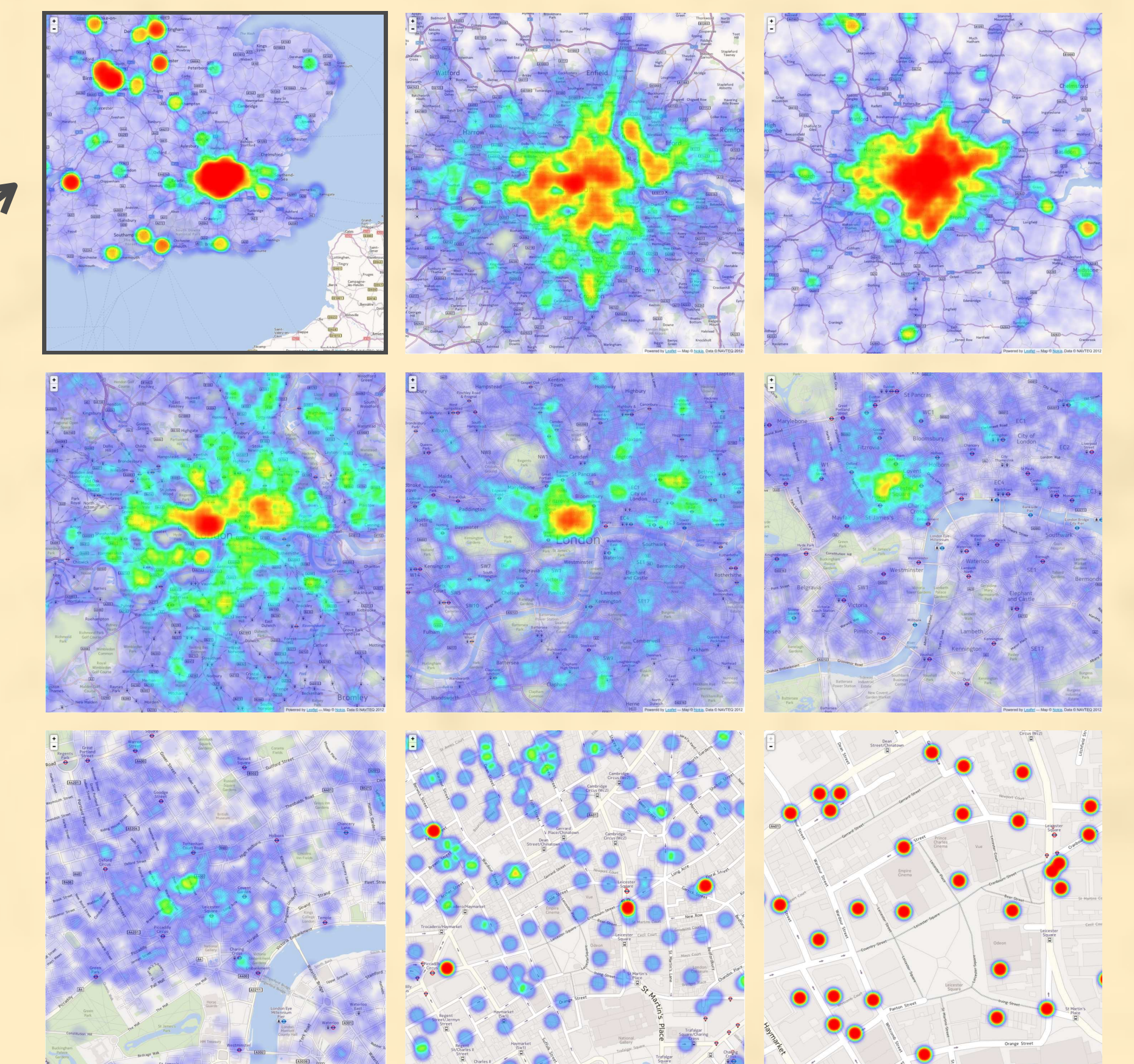
## rCrimemap (R Package)

<http://bit.ly/rCrimemap>

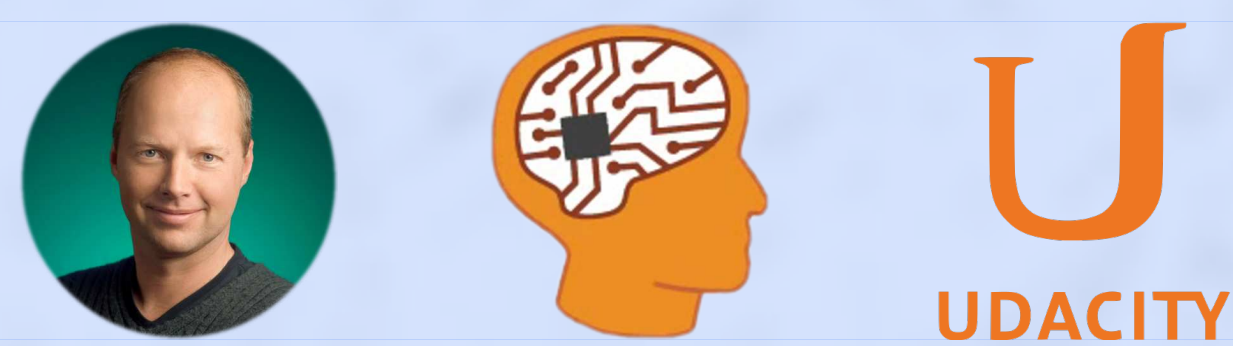
### All Crimes in UK (excl. Scotland) January 2014 – 425,692 Records



### Exploring Crimes in Central London Navigating and Zooming with rMaps



### Motivation



"If you want to learn sth new, find an interesting problem and dive into it!"  
Sebastian Thrun – Intro to A.I.

### Dependencies



ggmap, ggplot2, grid, plyr, markdown, png, RCurl, jsonlite, shiny, shinyapps  
D. Kahle, H. Wickham, RStudio ...

### Crime Data



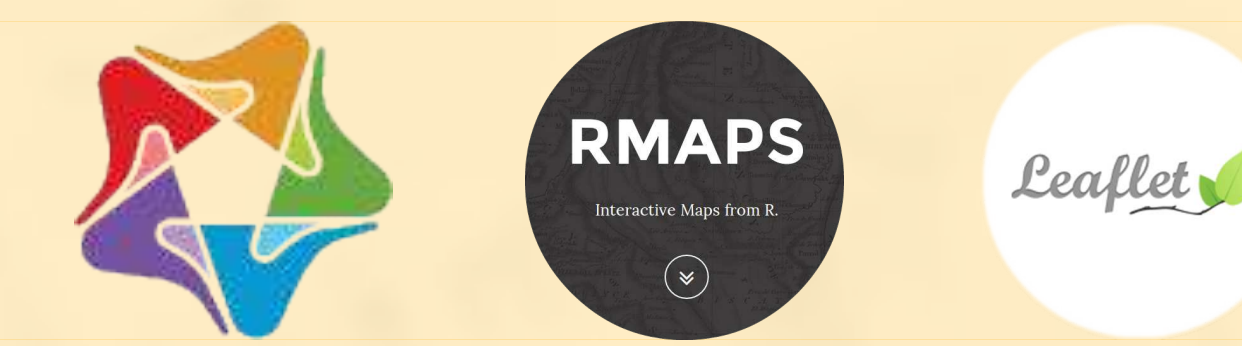
Street level crime data downloaded as JSON and converted into data frame.  
Source: data.police.uk

### Motivation



"You can create interactive heatmaps using Leaflet JS with rMaps, interested?"  
Ramnath Vaidyanathan

### Dependencies



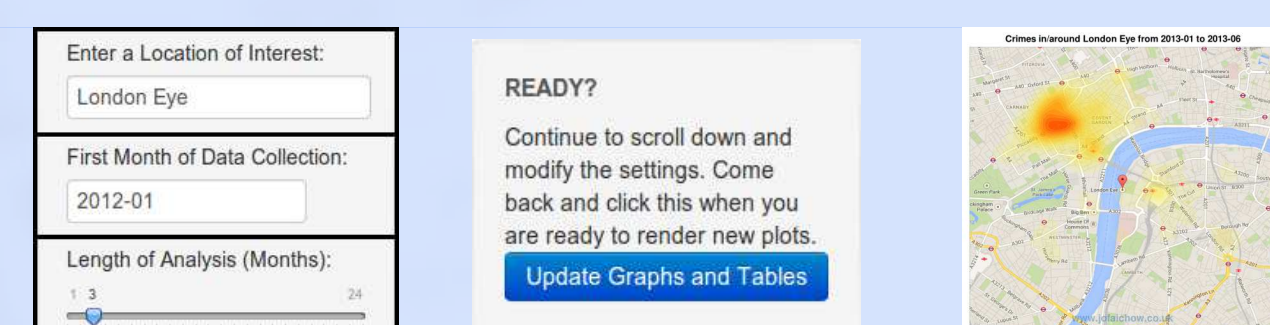
ggmap, dplyr, plyr, rCharts, rjson, rMaps, Leaflet (JavaScript)  
R. Vaidyanathan, V. Agafonkin, ...

### Crime Data



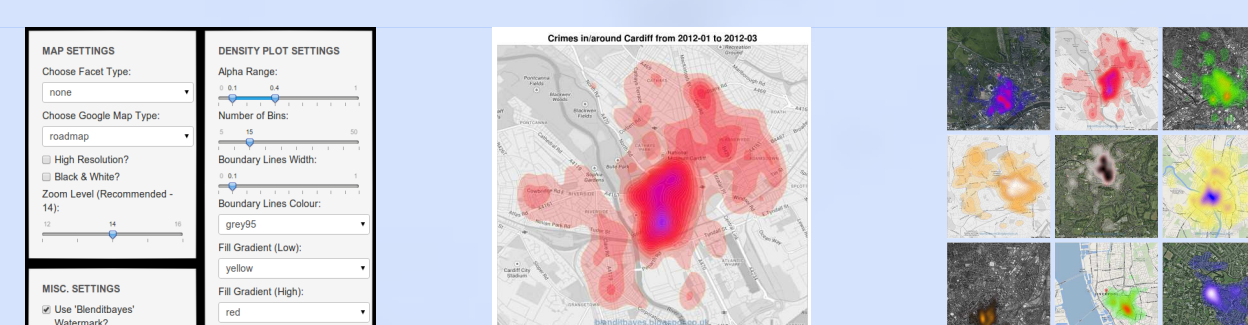
Data batch downloaded as CSV, converted and cached to streamline the process.  
Source: data.police.uk

### Simple



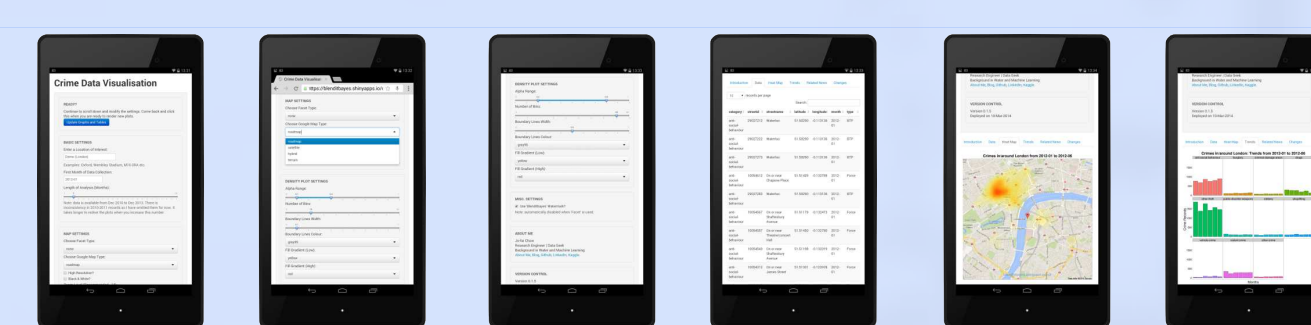
Only requires three inputs:  
(1) Location, (2) Start Date and (3) Length of Analysis.  
Even my parents can do it!

### Customizable



Advanced settings are just a few clicks away. Tweak the heatmaps to your liking.  
So, what is your favorite color?

### Mobile-Friendly



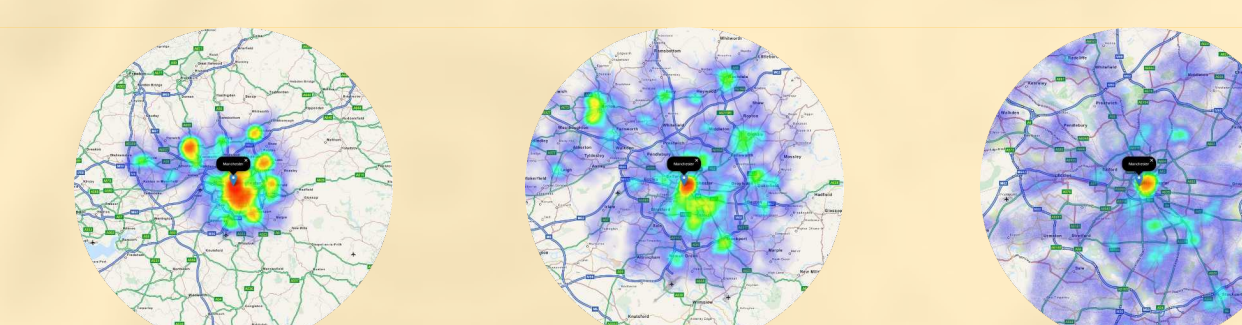
Shiny automatically adjusts display layout based on screen resolution.  
You can also theme it up with CSS!

### Intuitive



Navigate and zoom in/out like using any digital map with mouse or touchscreen.  
Explore large areas with ease!

### Reactive



Colors of 2D density plots automatically adjusted and updated after zooming.  
Truly reactive visualization!

### Web-Ready



Heatmaps can be saved and viewed as HTML files. Easy to create, publish and share.  
Awesome rCharts workflow!