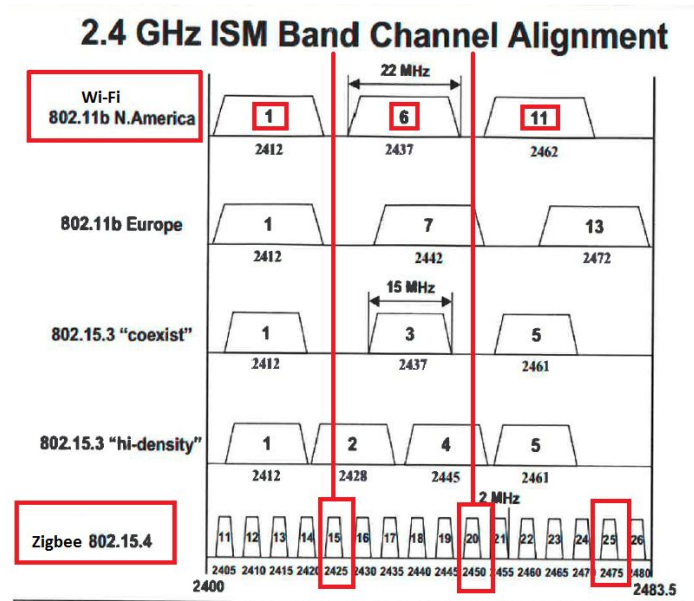


Zigbee and WiFi Interference

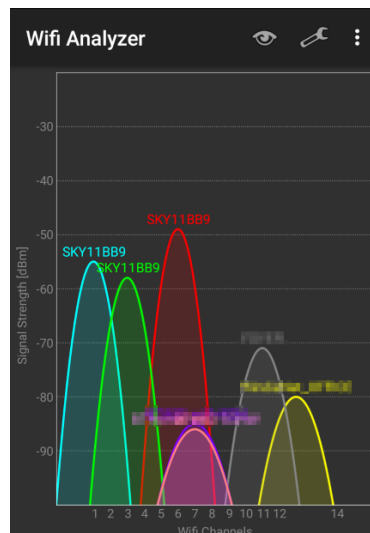
The 2.4 GHz band is shared by Zigbee and WiFi and interference can occur. The channel settings for each should be set to provide as much separation as possible to avoid this interference.

WiFi and Zigbee channels are not the same, WiFi Channel 11 is not the same as ZigBee Channel 11 as shown in the chart below.

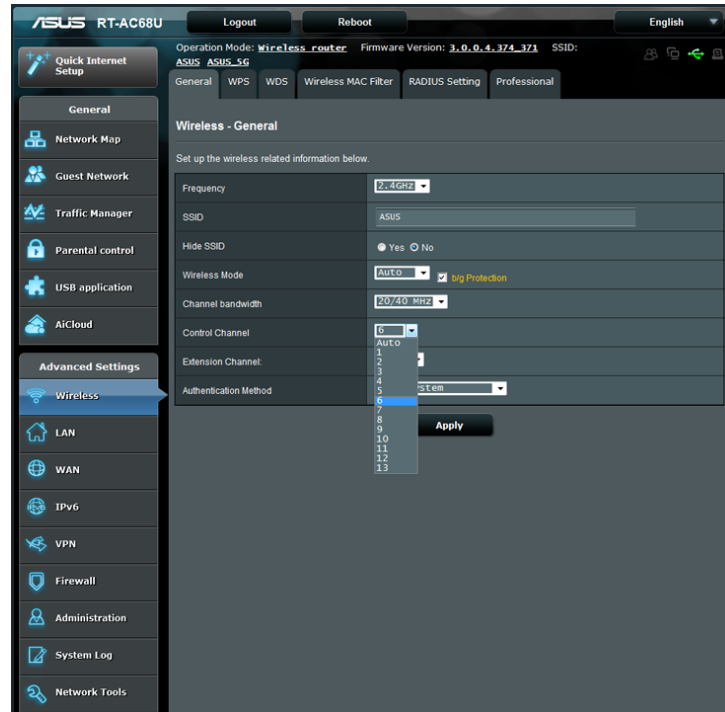


For the US setting Zigbee to 11 and WiFi to 11 or Zigbee to 25 Wifi to 1 would be good choices for separation.

A WiFi analyzer app on your Smartphone will help find a good channel without interference as exemplified. There are several good free ones available. Note that you will not see the Zigbee in the analyzer.



You will need to find and set the control channel in your router and do not rely on “Auto” configuration as it will not detect the Zigbee interference.



You may or may not be able to change the channel on your Zigbee controller or devices so you will need to do some upfront research on what the channel settings are or how to find them and can they be changed.